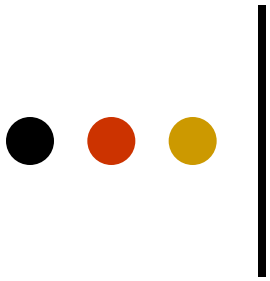




NZRF Materials Guide revision

Alister G Harlow

Executive Director, NZ Roadmarkers Federation



- Need for a Materials Guide
- Development of the initial Guide in 2004
- Revision of the Guide in 2009
- Major changes in this version of the Guide



Need for a Materials Guide

- Industry has around 50 products in common use
- Some are competing products, others have specialised features
- Manufacturers and suppliers highlight features and advantages
- Information provided in a consistent way
- Assist with Health, Safety and Environmental compliance
- Training Resource
- Document issued as a 'work in progress'



Development of the initial Guide

- Notes from RIAA (Australian) workshop programme in 2002-3
- Paper looked at materials alternatives and performance characteristics
- Guide developed by NZRF Technical Consultant
- Extensive consultation process involving manufacturers and suppliers



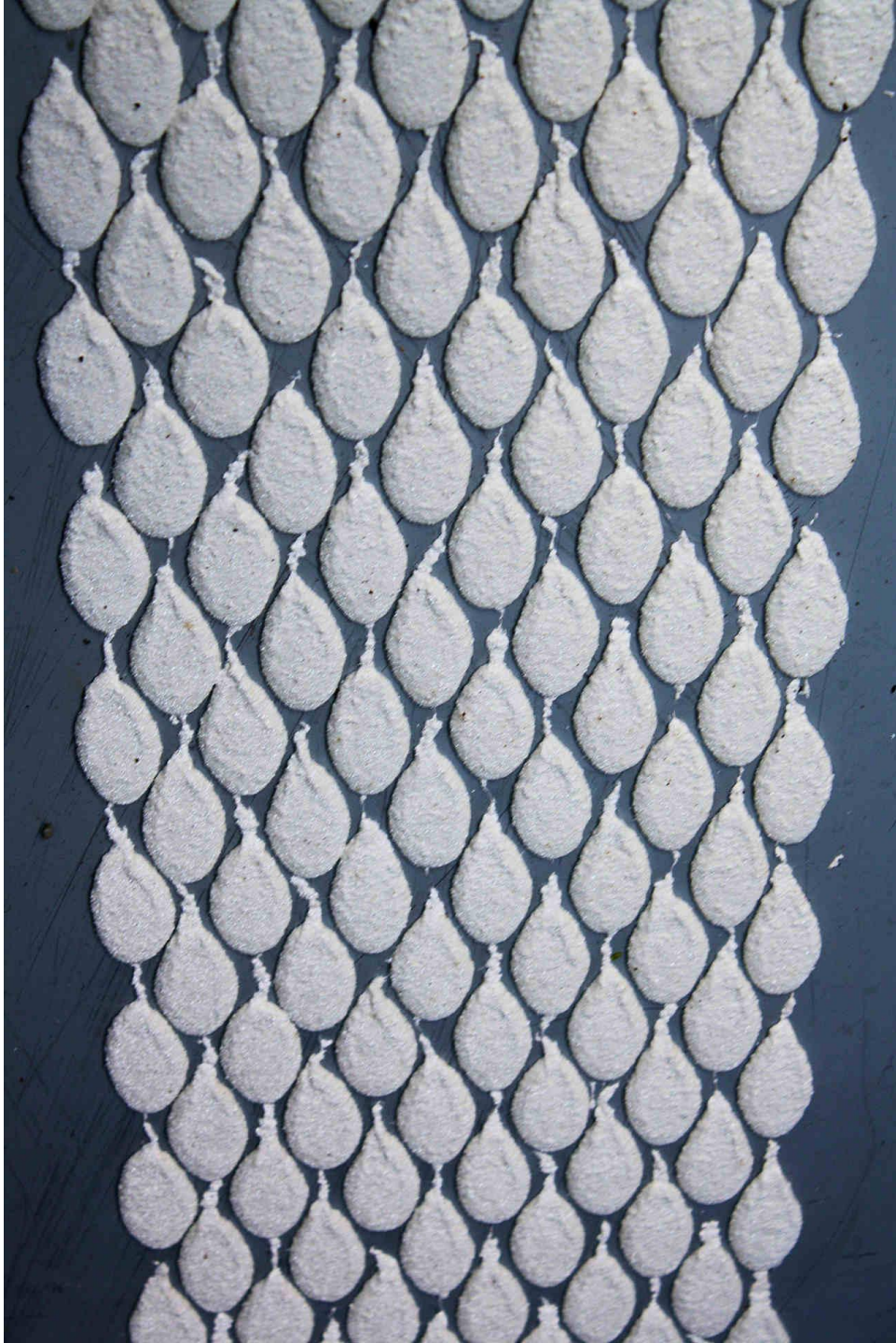
Revision of the Guide in 2009

- Changes in materials used
- Greater use of long-life product
- Use of overlays as an alternative to removal
- Revision assisted by InfraTrain, WITT and NZIHT



Changes related to Thermoplastic and CAP

- Multiple sections merged into one
- Sections then describe application process descriptions
 - Audio-tactile profile (ATP)
 - Structured
 - Spray
 - Hand applied







Temporary paint

- Specially formulated water-based paint
- Traditionally applied
- Removed through the application of a “neutraliser”



Retroreflective Elements

- Technology to give better wet night visibility and visibility in condition of raining
- Elements bonded to a suitable material
- May sit above the water film but also effective under water



Illuminated raised pavement markers

- Providing both illuminated and audio-tactile guidance
- Powered by solar, direct or inductive power
- May operate in combination with retroreflective lenses



Waterbourne paint catalyst

- Promotes rapid drying
- Liquid or spherical beads
- Absorbs water being released during the drying process



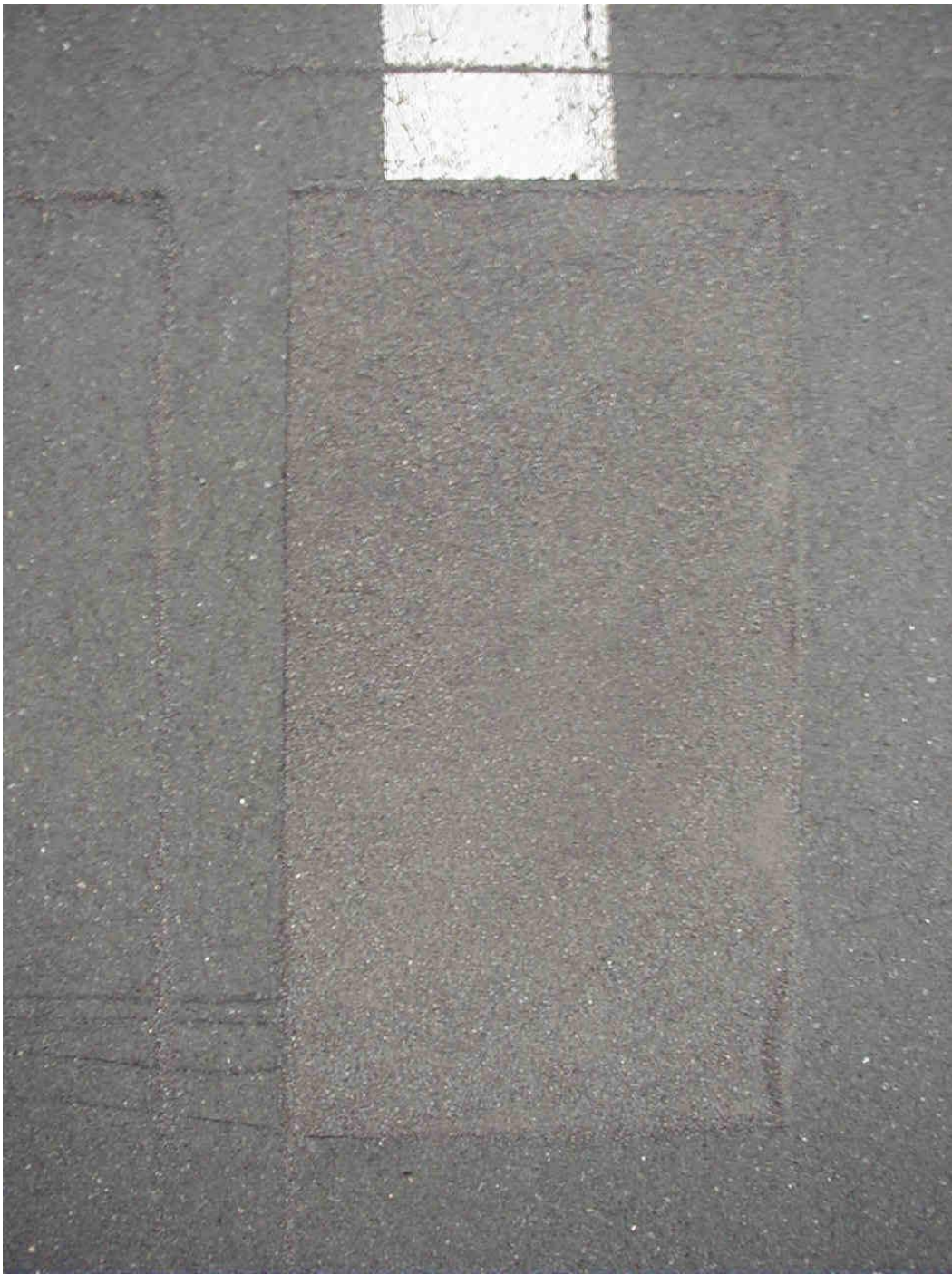
Cold Applied Plastic catalyst

- Benzoyl peroxide is combined with other materials
- Applied either as a liquid or a powder



Epoxy and Polyurethane permanent overlay

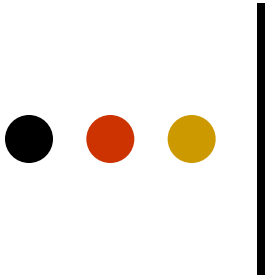
- Both are two part cold applied
- Surface applied aggregate with appropriate colour and skid resistance
- High friction or permanent overlay marking system





Scope of materials covered

Paint
Cold Applied Plastic
Thermoplastic
Self Adhesive tapes
Glass beads/ retroreflective media
Angular material
Solvents
Catalysts
Raised Pavement Markers
RPM adhesive
Pavement Overlay Binders
Cement Based Coatings



www.nzrf.co.nz