

Developing Great Cycle Rides for a Prosperous and Sustainable Future

Presenters:

- Andrew McDonald
- Hamish Peacock

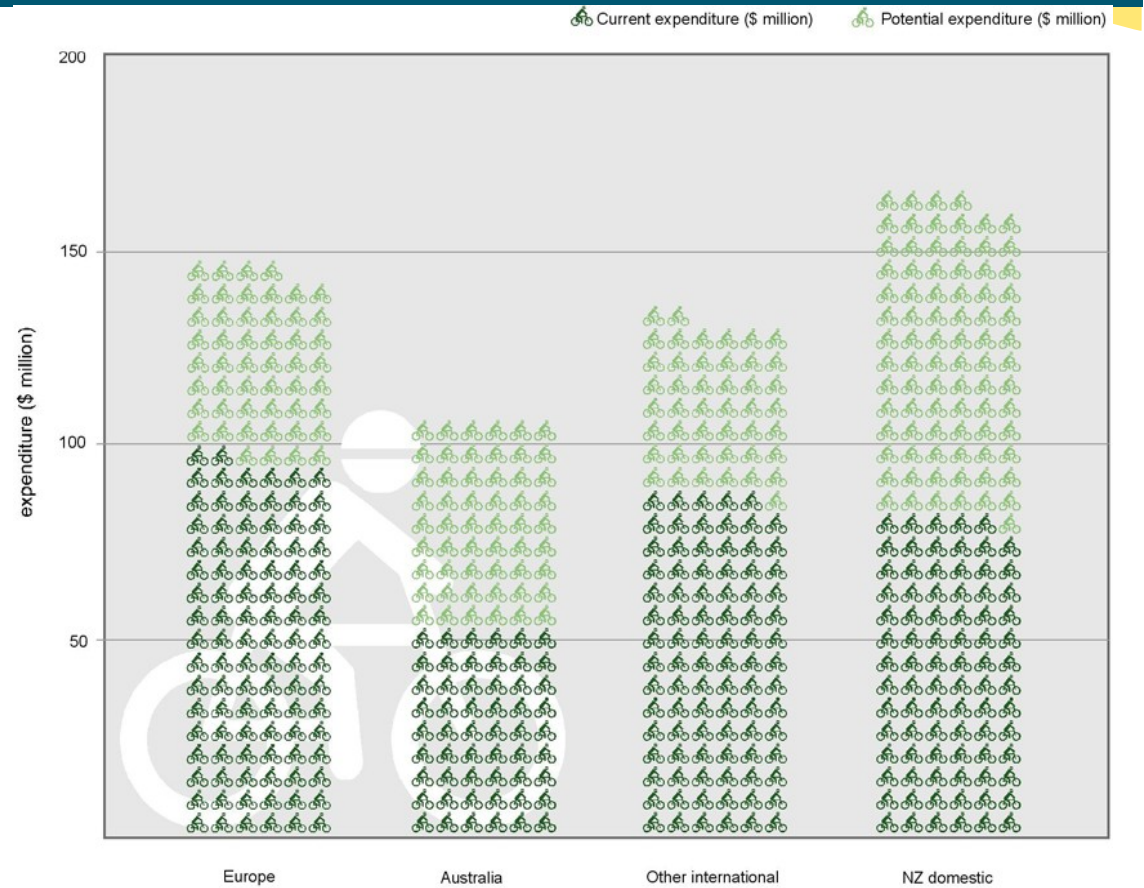
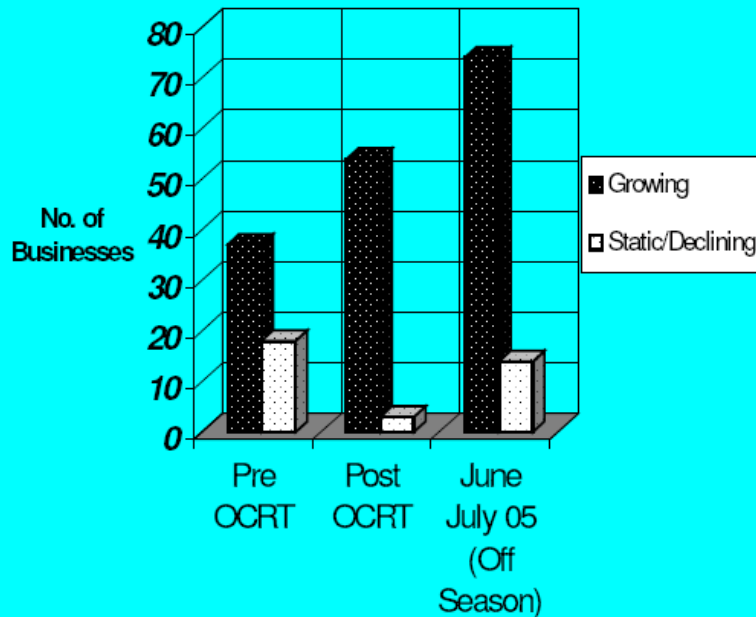


MWH

BUILDING A BETTER WORLD

Prosperity

Business Status of Accom Providers and Gen Business Before & After OCRT Feb 2000 Opening and in June-July 2005 (Off Season)



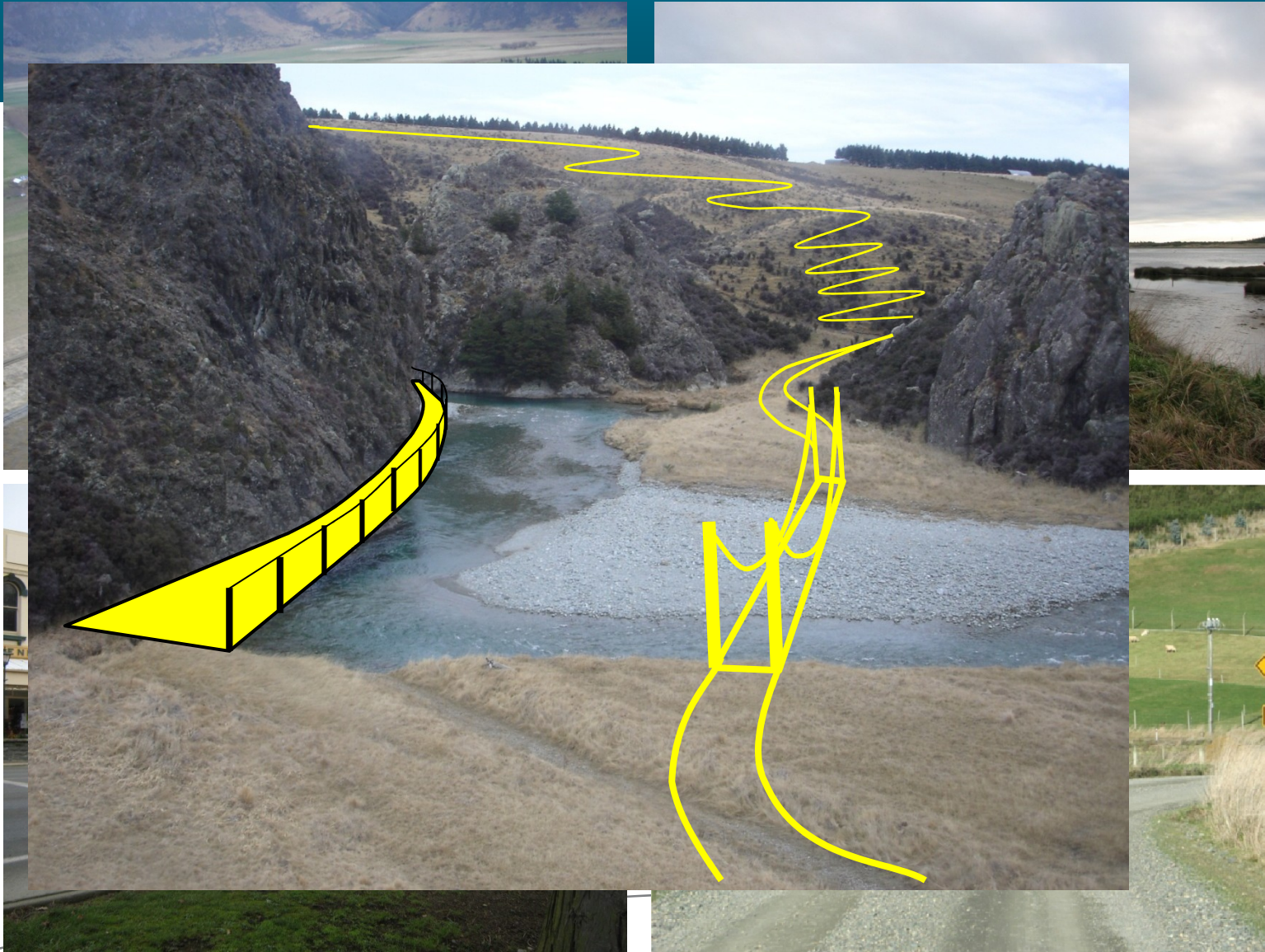
From the Otago Central Rail Trail Means Business Report - 2005

From the Ministry of Tourism NZ Cycleway Market Research - 2009

Two Great Rides



The Experience



Design Consideration



Planning Strategy



Authorities

Regional Councils City & District Councils



Activities

Gravel extraction, bridges, culverts, structures through wetlands etc.

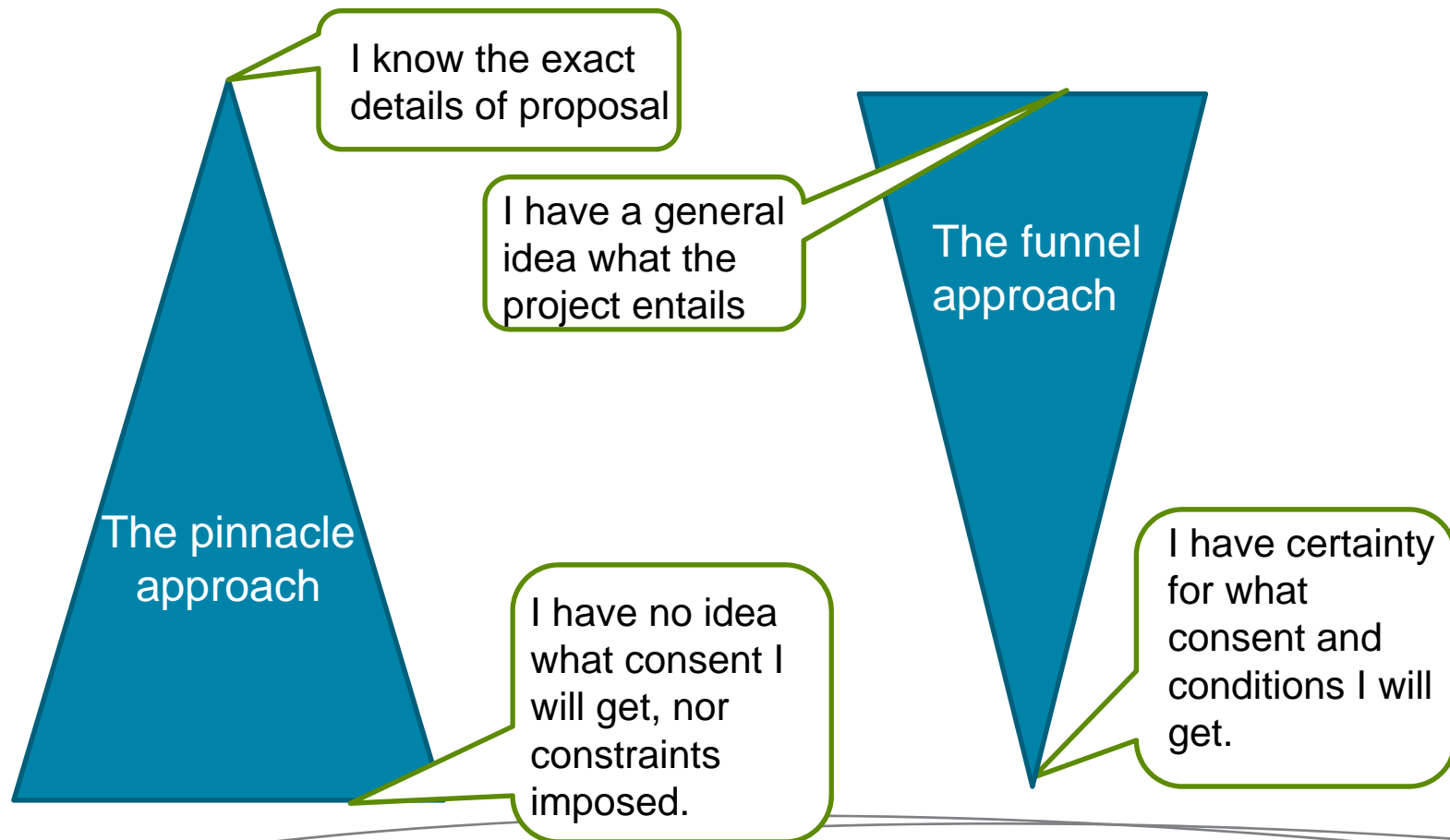
Vegetation clearance and earthworks within proximity to waterways and on certain slope angles.

Other strategies -

- Integrated site inspections
- Global Consents, bundled
- Co-ordinated approach across Councils – request for one officer to perform consent processing
- Generic conditions for Regional Councils and District Councils
- Inclusive consent applications when in doubt, to future proof the track and protect from conflicting activities.

Consenting Strategy

Consenting involves whole of project understanding




Conclusions

Value Added:

- Balanced design
- Maximised value
- Planning leadership
- Minimised project blockers (landowner risk)

Only time will tell...

- Long term benefits will outweigh the costs
 - Community growth
- 



Questions

Presenters:

Andrew McDonald – Transportation Engineer

Hamish Peacock – Senior Environmental Planner

