

Secrets to Developing a Successful Package of Projects

**Mike Tottman (MWH)
and
David Scarlet (NZTA)**



NZ TRANSPORT AGENCY
WAKA KOTAHI



MWH®

BUILDING A BETTER WORLD

Overview

- The Christchurch Northern Access Package as endorsed by the NZTA Board
- Package terminology and benefits
- Process to develop the package and the following NZTA assessment
- The secrets, what were the key elements for a successful NZTA package endorsement

Location



Network Entry Points of Travel Demand from North

SH1

Rangiora

Pegasus Town

Woodend

SH71

Kaiapoi



Waimakariri River

Belfast

Harewood

Styx

Avondale

Study Boundary

Christchurch

Ilam

Woolston

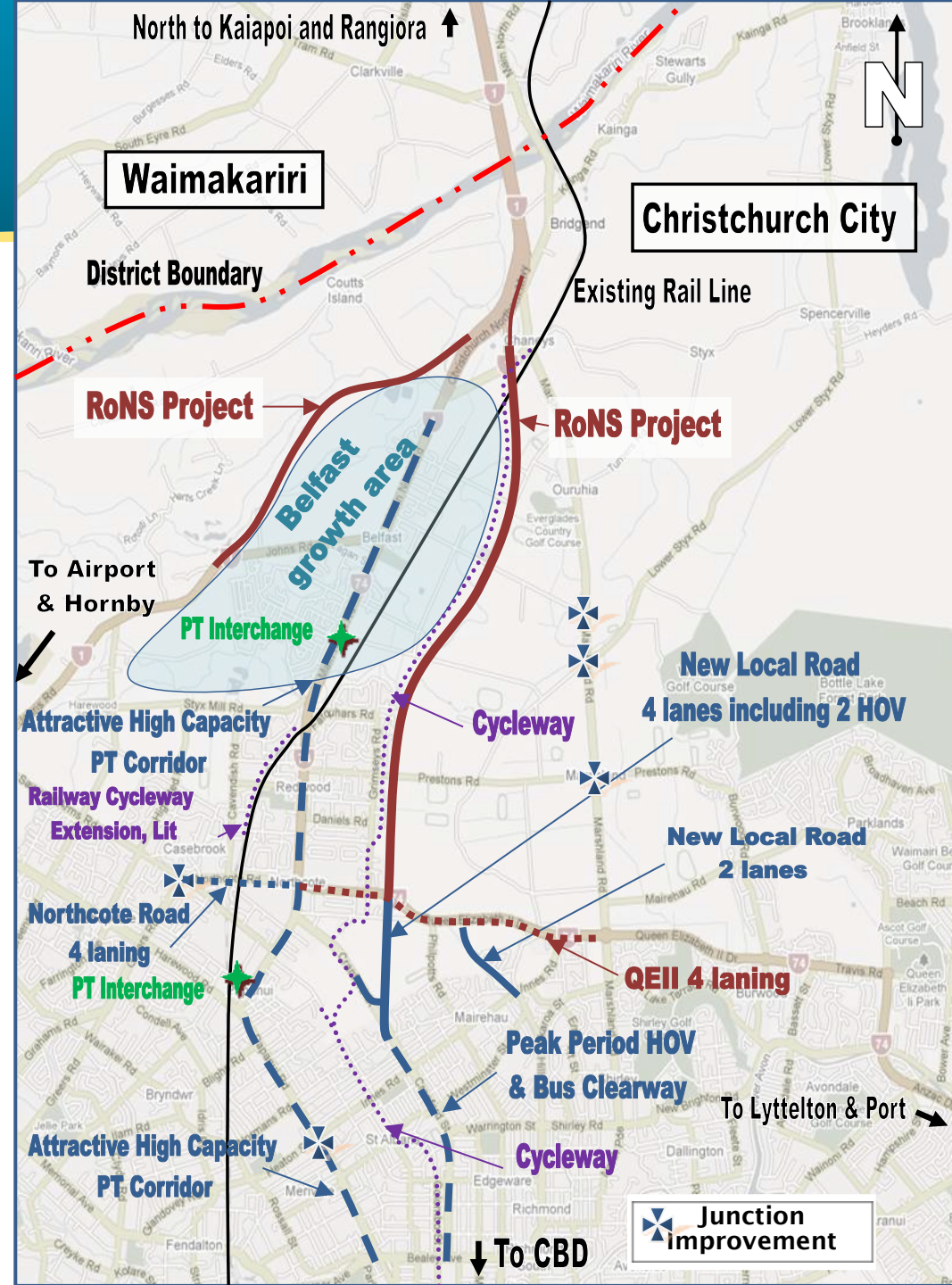
Southshore

Hoon Hay

Halswell

The endorsed package

- \$286 million in total
- \$185 million in RoNS
- \$101 million local transport projects
- 25 activities in total
- A 30 year period
- Profile HHM

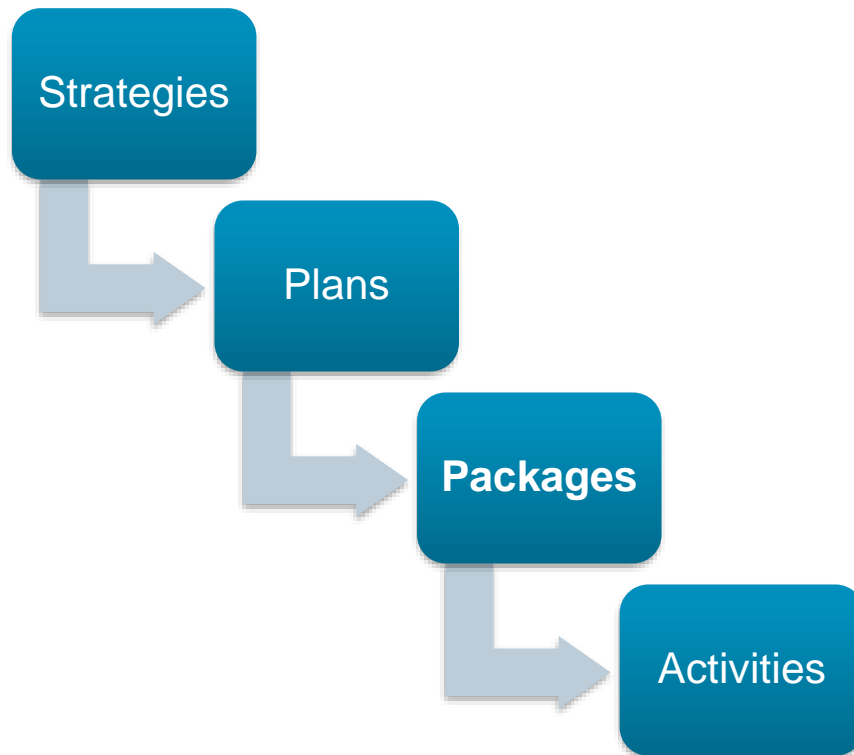


NZTA terminology

- **Activity:** Infrastructure work or service provision
- **Package:** A complimentary group of activities
- **Macroscope:** The function, form, design features

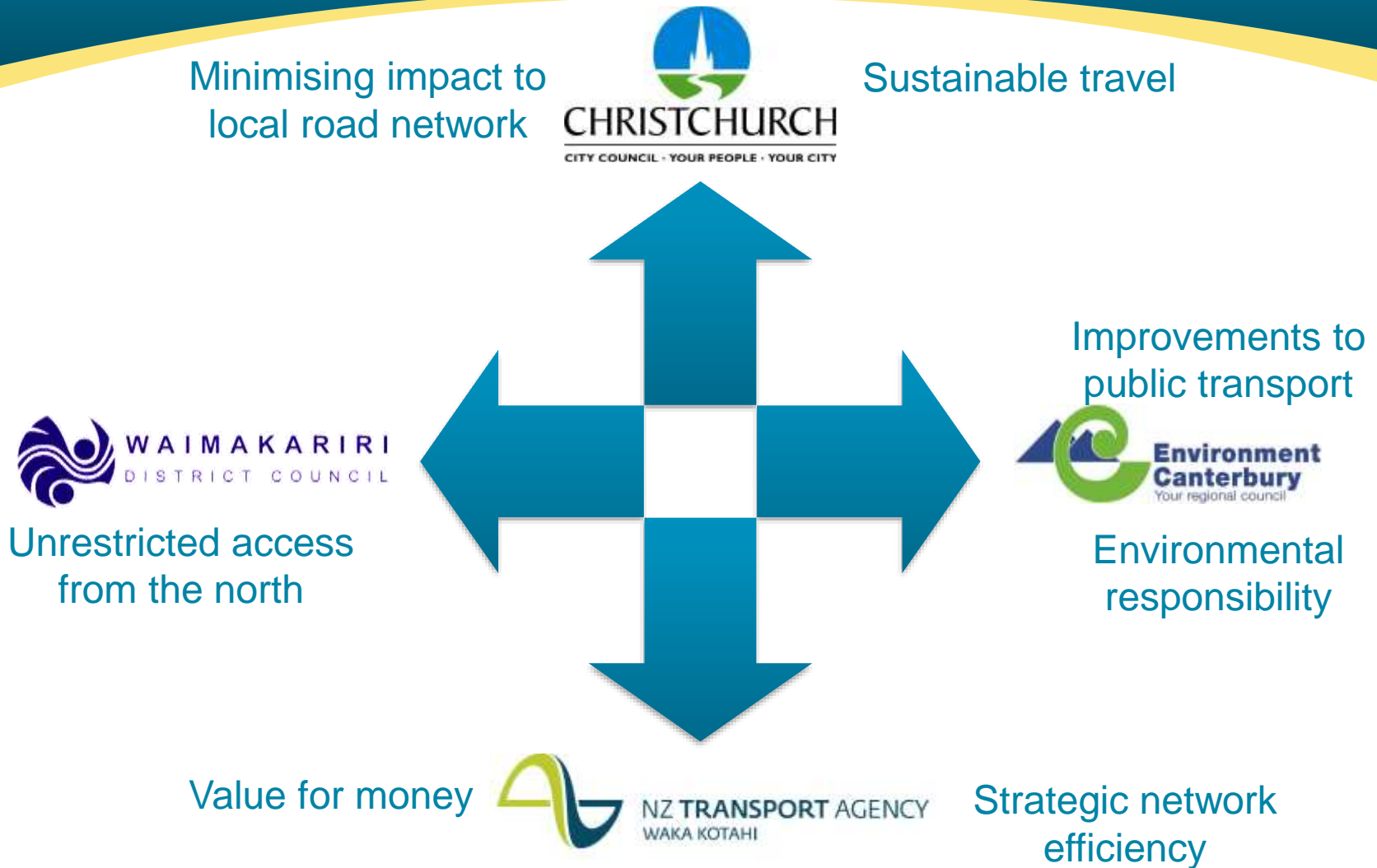
Why develop a package?

- Provides integrated land use planning



- Helps in funding process for activities

The start... working out the package



The start... working out the package

Minimising impact to
local road network



Sustainable travel



Unrestricted access
from the north

Improvements to
public transport



Environmental
responsibility

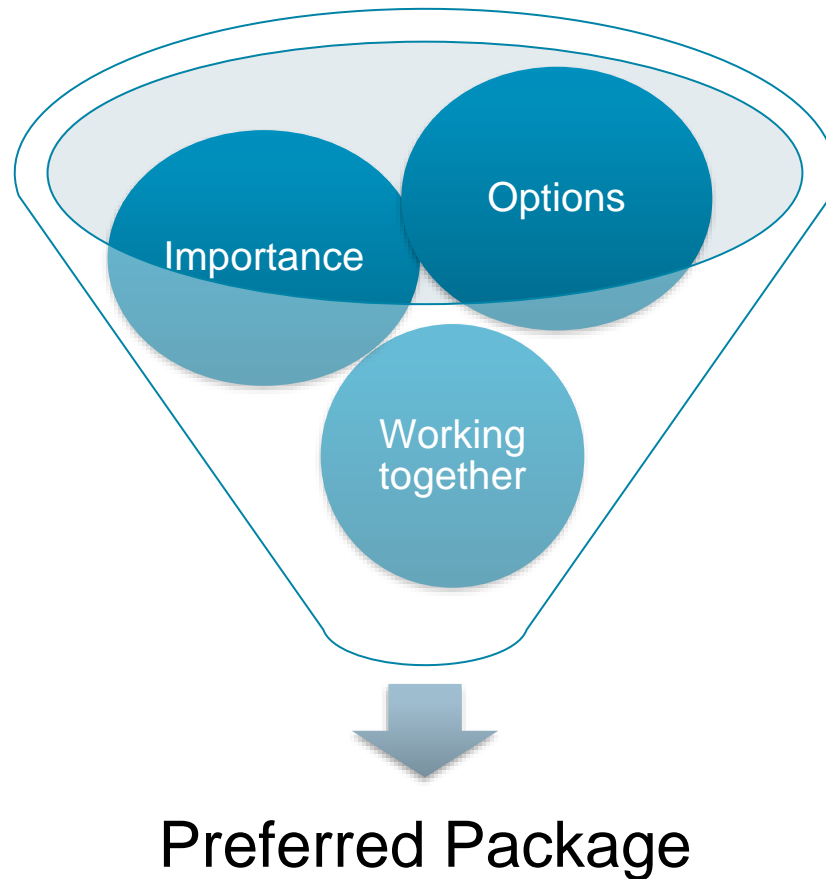
Value for money



Strategic network
efficiency

The middle... testing and optimising

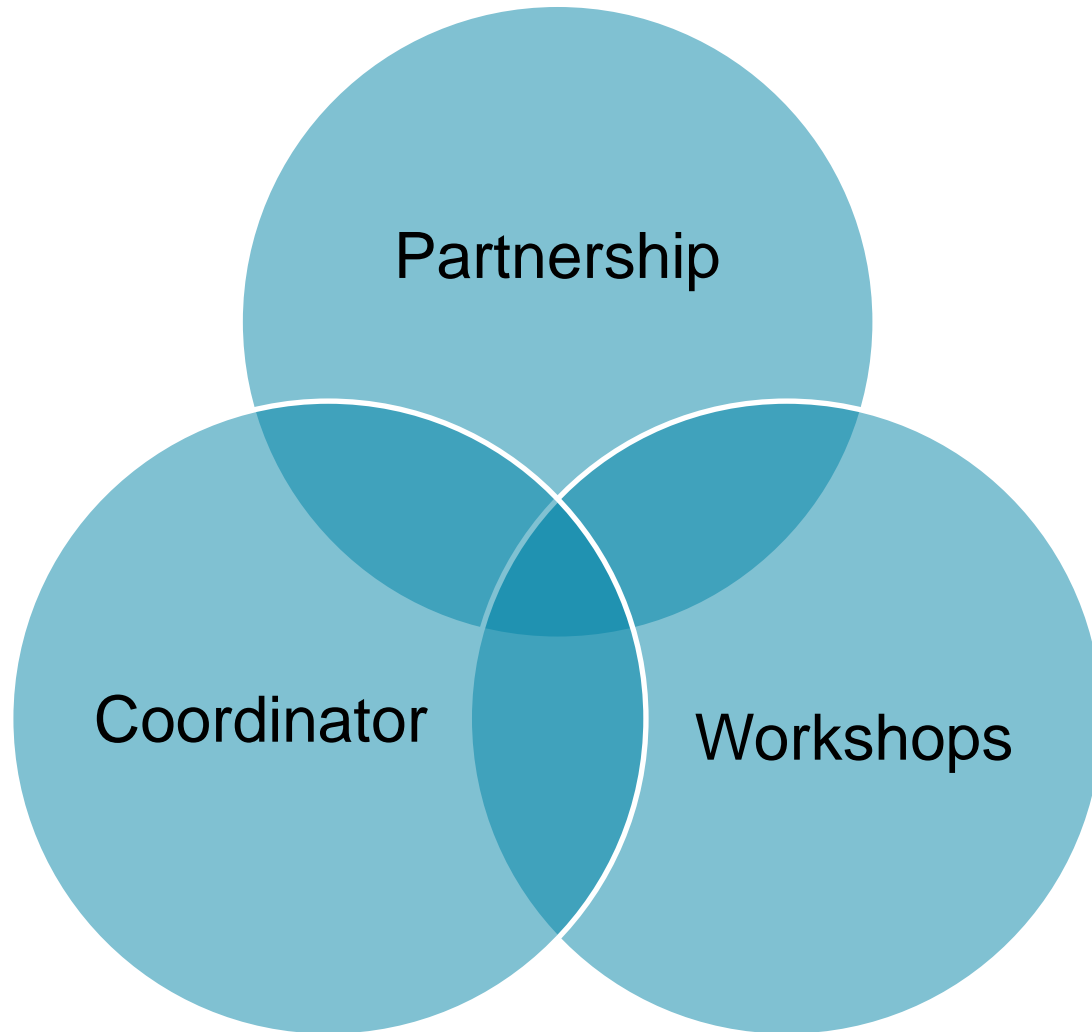
- A facilitated three day workshop



The finish... getting to the NZTA Board

- Compiling a draft board paper agreed by the agencies
- Assessment by NZTA Regional Partnerships and Planning, including examination of synergies
- Completion of the board paper by RPP and endorsement by the Board
- Next steps and the potential effects of the February earthquake

The main “secrets”



Any Questions?

