

IPENZ Transportation Group Canterbury/West
Coast Branch Committee:

FACILITATING A BRANCH SUBMISSION ON COMPLEX TRANSPORT MATTERS

James Park,
Committee Chairman,
IPENZ Transportation Group,
Canterbury/West Coast Branch



Coverage

- The Situation (and Opportunity)
- The Scale of the Challenge
- Council Collecting Ideas
- The Draft Central City Plan
- The TG Branch Submission
- Where are we now?

The Situation (and Opportunity)

- 22 Feb 2011 - Earthquake badly damaged the Christchurch Central City
- In response the overall recovery strategy includes a new Christchurch Central City Plan (CCP)
 - The "Transport Choice" chapter included nine key transport projects, some controversial.
 - Released Aug 2011 publicly for feedback.

- Initially the Branch Committee felt that a representative Submission on the CCP would not be feasible - due to likely diversity of opinion.



The Scale of the Challenge

- The Christchurch Central City was annexed and isolated abruptly
- The central hub for City transport networks was gone – leaving a red zone “black hole”.
- Impact compounded by:
 - road closures/restrictions,
 - thousands of abandoned homes,
 - businesses relocated to the suburbs
- Land use patterns as input to transport models no longer valid - usual assessment tools required updating.
- These are challenging times for the Transportation industry and its Professional participants



Time Pressure

- There is time pressure too.
- A real need for:
 - leadership and forward vision;
 - judicious compromise;
 - strategically focused thinking;
 - decisions made, without undue delay.
- How can the members of the Transportation Group participate effectively:
 - To input skills and expertise into this public arena and,
 - In constructive discussion with Council around rebuilding the transportation infrastructure?



Collecting Ideas

- The TG Branch Committee acted as facilitator to promote the City Council's initiative in a joint "*Share an Idea - Transport 'Move' Forum*" in early June 2011:
 - the TG Branch;
 - Chartered Inst. of Logistics and Transport (CILT), and,
 - Academics from Canterbury and Lincoln Universities.
- The TG Branch was very keen to inform and empower Members to become engaged with the Council process.



(No TG Branch submission was made at this 1st stage.)

Critically Reviewing Ideas

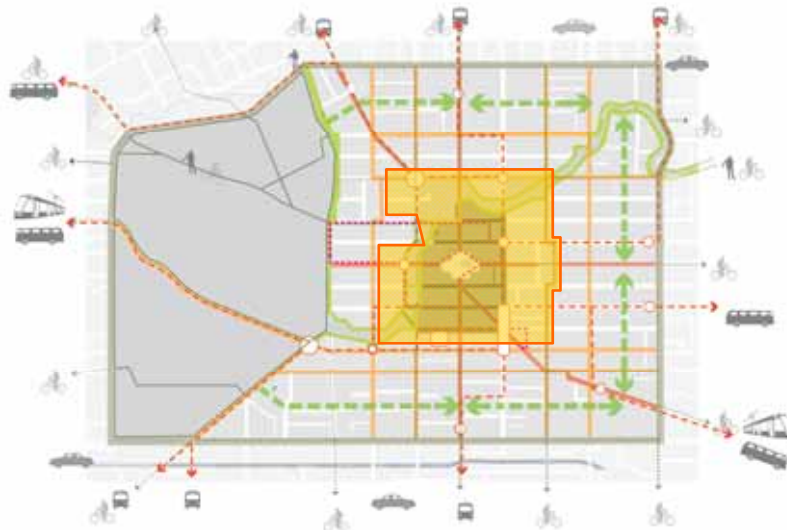
- To develop and refine the key issues for the CCP the Christchurch City Council ran a series of Transport Workshops in late May/early June 2011:


- Street Function,
- Parking,
- Public Transport.



- The TG Branch were happy to be invited to participate and nominated Members with experience to attend these workshops – and contribute.
- The TG Branch representatives provided feedback to Members as presentations later.

The Draft Central City Plan



 - Current extent (generally) of the Central Red Exclusion Zone

The TG Branch Submission

The IPENZ TG Branch was inspired by its Members to make a submission on the Draft CCP due to :

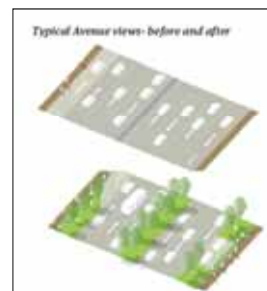
- General concern that robust analysis was still needed to guide the transportation decisions of the Plan
- Other interest groups were in the media - important the Transportation Profession stated its position.
- Decisions made now would affect the performance of the Christchurch City network for many years to come.
- Individuals and companies strongly seeking a mechanism to comment - *without putting future work with Council at risk*

A TG Branch Submission was definitely warranted.

The TG Branch Submission

- The over-arching and co-ordinated position of the TG Branch became prominent as;
 - A ubiquitous collective voice of Transport Professionals,
 - Potentially carrying more weight and influence,
 - A professional voice supporting sound, well-informed decisions at City Council level.

- **We all wanted to see this done well.**



The TG Branch Submission

- A TG Branch Members forum arranged in early September 2011 to discuss the issues – **the result was a remarkable convergence of opinion**
- Submission then focused on:
 - Light Rail
 - Buses and street stations
 - Slow core
 - Streets for cycling
 - Enhancing the four avenues
 - One way to two way conversion
 - Parking provision



The TG Branch Submission

- The TG Branch Committee then acted by:
 - Distilling the views proposed in the forum
 - Compiling a draft submission, sent out to TG Branch Members for comments.
- **The Submission was finalised, and presented to Council before the deadline in mid Sept 2011.**
- The TG Branch has emphasised, and continues to support:
 - City Council taking the time to seek professional advice and;
 - Ensuring that transportation decisions are made with appropriate levels of information, investigation, and critical analysis.

Media

- Some representative groups have sought a higher public profile through the media.
 - TG Branch Committee agreed to stay out of the media.
 - The TG Branch submission was critical to state Member concerns.

Where Are We Now?

- IPENZ TG, with other professional groups, are involved with Canterbury EQ Recovery Authority (CERA) advisory forums
- Professional relationships and connections, across roles and public/commercial organisations remain critical.
- In the public domain inconsistent and conflicting opinions easily cloud issues, especially in Transportation:
 - *we continue to consider carefully how we can best contribute to public information.*
- We promote (and hope the Council recognise) that the IPENZ TG through the Branch can provide valuable input on transportation issues and planning processes linked with transportation.

Progress of the CCP

- Update of further progress by the City Council on the Central City Plan to date:
 - CCP was revised following submissions
 - Final Draft through City Council in Dec 2011
 - Now with the Minister of EQ Recovery awaiting sign off (expected mid-April)
- Then the really hard work starts.

Acknowledgments

- AND THAT'S THE END
-- WELL REALLY JUST
THE START.....



- Thanks to:
 - Christchurch City Council
 - TG Canterbury/West Coast Branch Committee

– We Welcome Any Questions.

References

- See the following for more details:
- <http://www.ccc.govt.nz/homeliving/civildefence/chcheearthquake/centralcityplan.aspx>