

What is Self-Explaining, Anyway?

An investigation of speed variability
on rural New Zealand roads

Bridget Burdett
Senior Transportation Researcher, TDG



Wake Up Demonstration....

The Stroop Test.

Road

Red

Sign

Green

Gold

Speed

Blue

Purple

White

Black

Orange

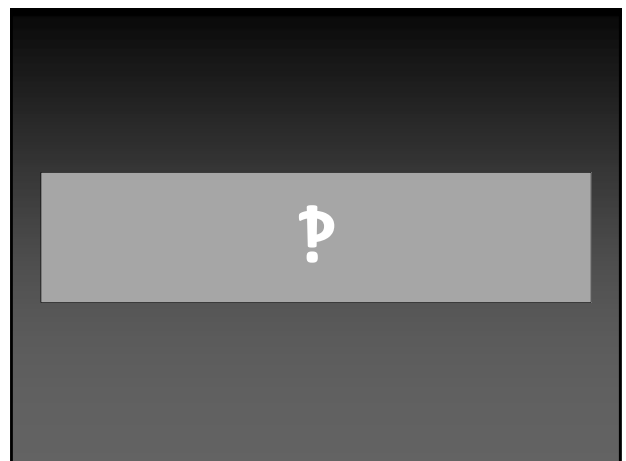
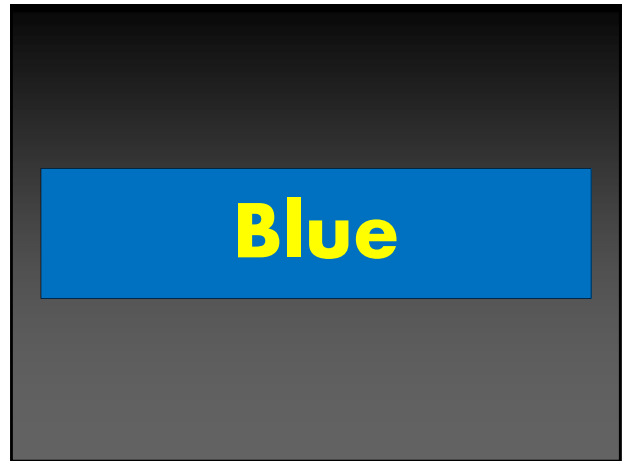
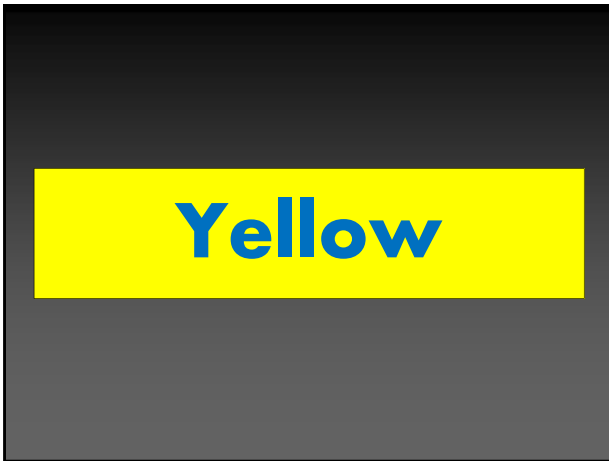
Green

Magenta

Brown

Grey

Peach



Agenda

Question

- Where does self-explaining come from?
- Which error types does self-explaining address?
- How much attention do drivers pay to driving?
- What is proceduralisation?

Agenda

Question

- How can we do self-explaining on New Zealand's rural roads?

Measuring self-explainingness



Safety Science 19 (1995) 217-225

**safety
science**

Self-explaining roads

Jan Theeuwes, Hans Godthelp

TNO Human Factors Research Institute, P.O. Box 23, 3769 ZG Soesterberg, The Netherlands

“When developing the “road of the future” one should start with a few easy recognizable and distinguishable road categories...”

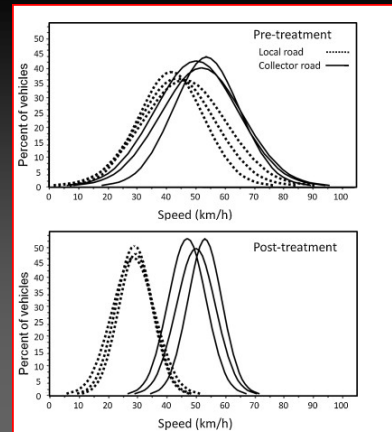


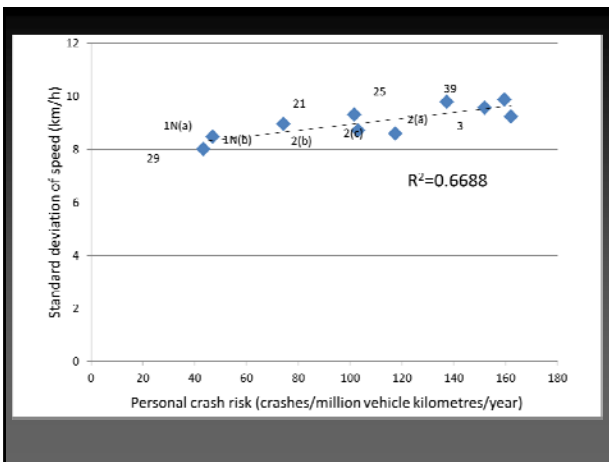
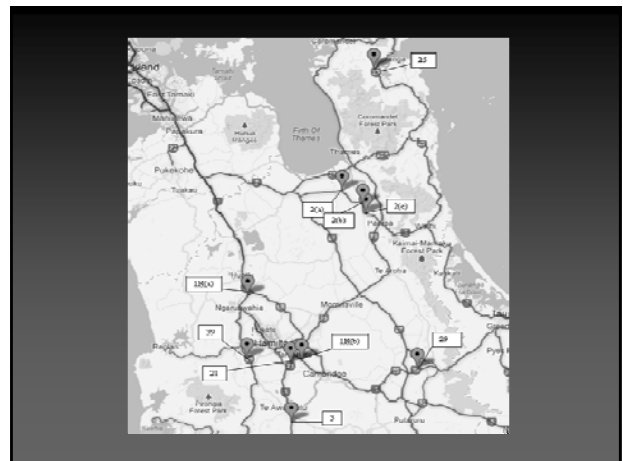
Theeuwes & Godthelp, 1995

...These types of roads should be designed in such a way that high speed differences and directional differences are not possible.”

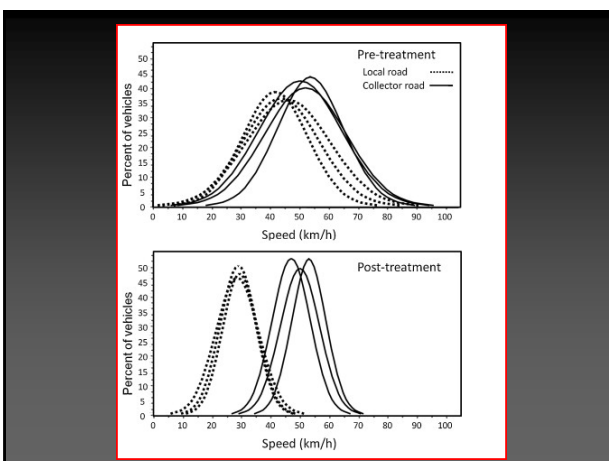


Theeuwes & Godthelp, 1995





**But, but,
what about
mean speed?**



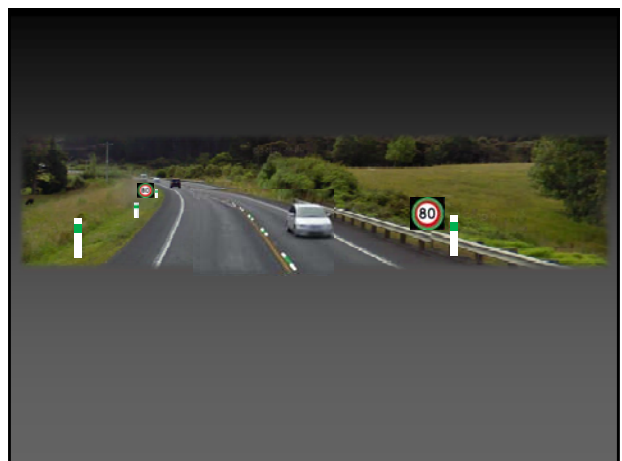
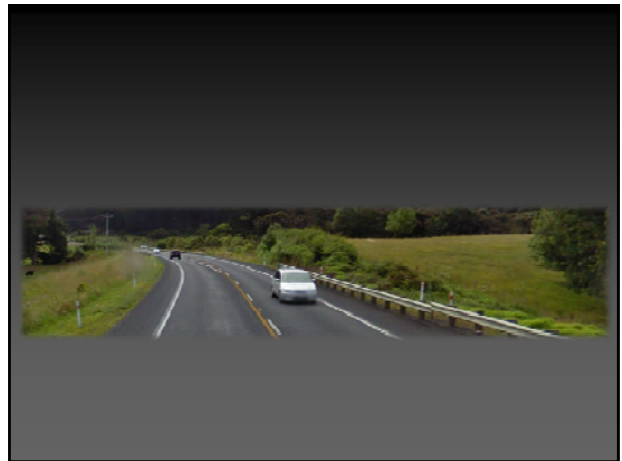
The New Zealand Herald

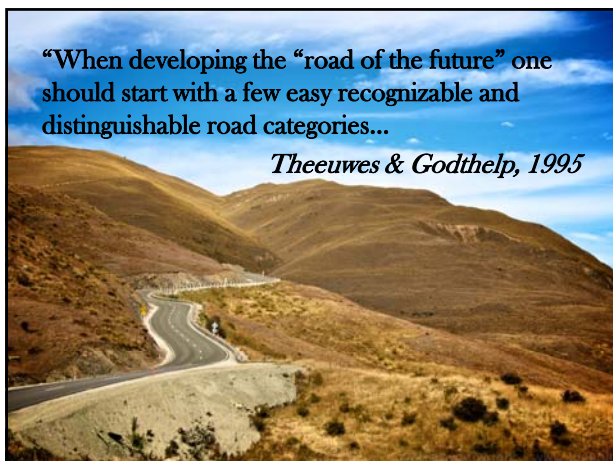
Trees and barriers in test streets cut accident, injury rates

Mackie, H.W., Charlton, S.G., Baas, P.H., Villasenor, P.C. Road user behaviour changes following a self-explaining roads intervention, *Accident Analysis & Prevention*, Volume 50, January 2013, Pages 742-750

Question


- How can we do self-explaining on New Zealand's rural roads?






What should we do?...

Collaborate on a network-wide approach to create self-explaining road categories

The logo for TDG (Traffic Design Group) is located in the bottom right corner of the slide.

What is self-explaining, anyway?...

A self-explaining road is a safe one.
BB, 2013

The logo for TDG (Traffic Design Group) is located in the bottom right corner of the slide.