

Capacity over Community?

Jeanette Ward
IPENZ Transportation Conference 2014

Co-author
Adam Taylor (CCC)

Abley Transportation Consultants Ltd

The Dilemma

- Increasing the capacity of an arterial road that is also a street where people live!



Abley Transportation Consultants Ltd

1959 – Memorial Ave



Abley Transportation Consultants Ltd

1970 - 90s



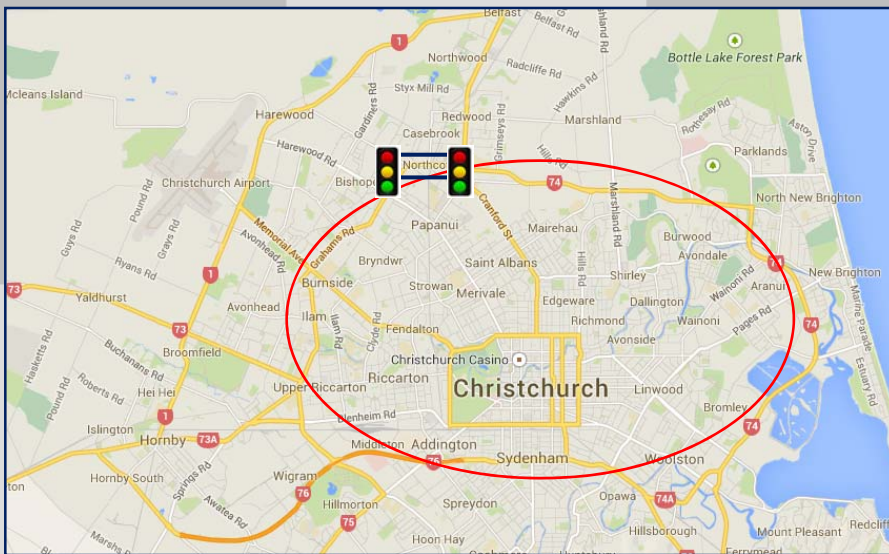
Abley Transportation Consultants Ltd

2005 – Fendalton Road



Abley Transportation Consultants Ltd

Northcote Road - Location



Abley Transportation Consultants Ltd

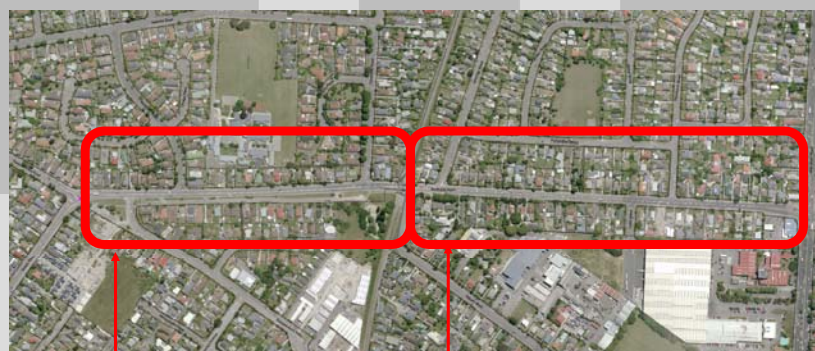
Northcote Road - Place



Abley Transportation Consultants Ltd

Northcote Road – Link

District Arterial, Local Cycleway, Bus Route, 5% HGV, 50km/h



32m existing corridor

20m corridor, 5.5m designation on each side

Abley Transportation Consultants Ltd

Northcote Road - Existing



Abley Transportation Consultants Ltd

Northcote Road - Existing

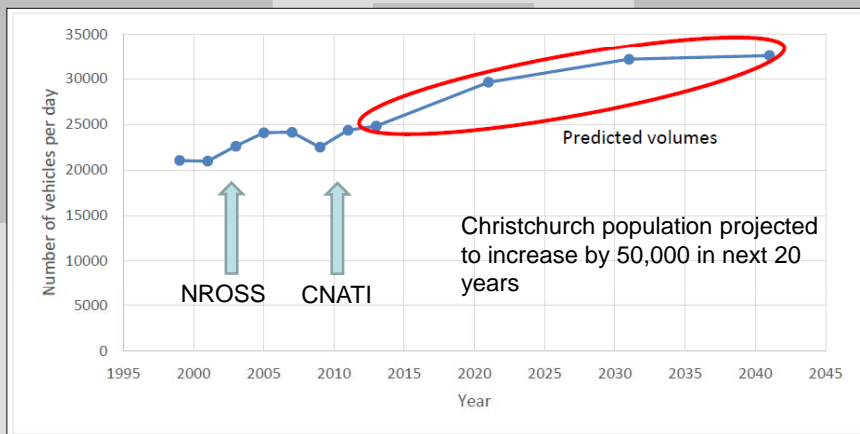


Abley Transportation Consultants Ltd

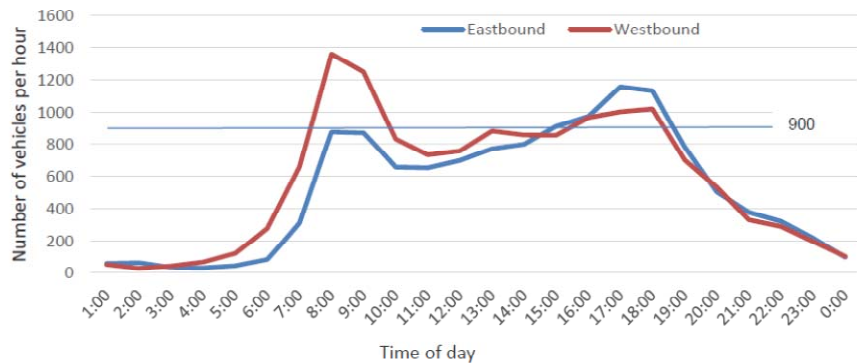
Northcote Road - Designation



Northcote Road - Flows



Northcote Road - Flows



Abley Transportation Consultants Ltd

Issues for residents

- Convenience – access, crossing the road?
- Safety – protection of their family & property
- Noise – setback?
- Health – shading, emissions?
- Aesthetics – landscaping?
- Social – areas to interact?

Abley Transportation Consultants Ltd

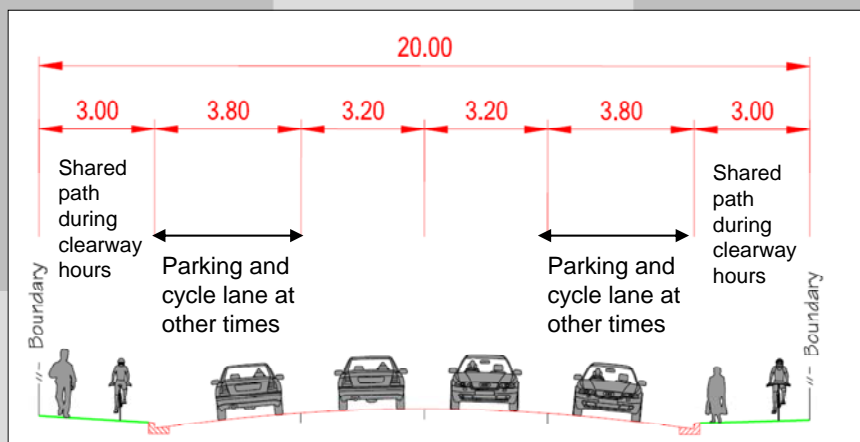
Options

- Select one of the two options as a transport professional, then as a resident!



Abley Transportation Consultants Ltd

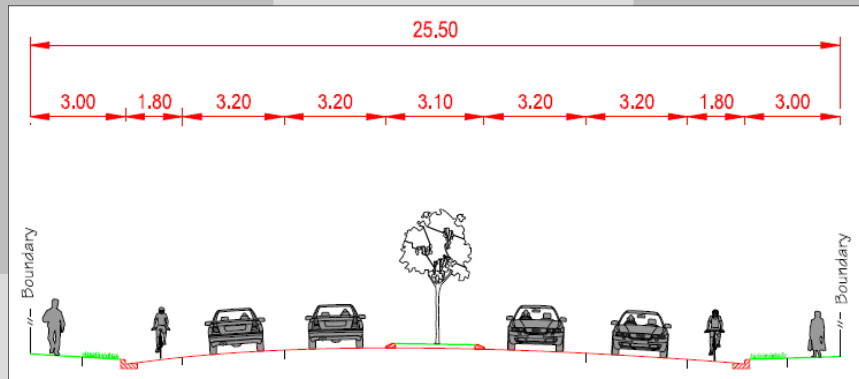
Option 1 - Clearway



- Try to retain designations for the future
- Safety issues (right turns, shared path with multiple driveways)
- No landscaping

Abley Transportation Consultants Ltd

Option 2 – Widening



- Take 5.5m land from south side, retains kerb on north side
- On-road cycle lanes
- Solid median
- No on-street parking

Abley Transportation Consultants Ltd

Conclusions

- For Northcote Road a fine balance between capacity & community is difficult to achieve.
- There is a lack of research into what people who reside on arterial streets consider important.
- Maybe it is; Safety, aesthetics, health, noise, social and convenience.

Abley Transportation Consultants Ltd