

# Optimisation



SNUG – IPENZ TG 2014  
[matthew.hoyle@itoc.govt.nz](mailto:matthew.hoyle@itoc.govt.nz)



A JOINT VENTURE BETWEEN NEW ZEALAND  
TRANSPORT AGENCY & AUCKLAND TRANSPORT



## Aim of the presentation

- What is Traffic Signal Optimisation?
- What do the Signal Engineers do?
- What can be achieved?
- Typical benefits
- Challenges

SNUG – IPENZ TG 2014  
[matthew.hoyle@itoc.govt.nz](mailto:matthew.hoyle@itoc.govt.nz)



## SNUG – Signals NZ User Group

- Traffic Signals

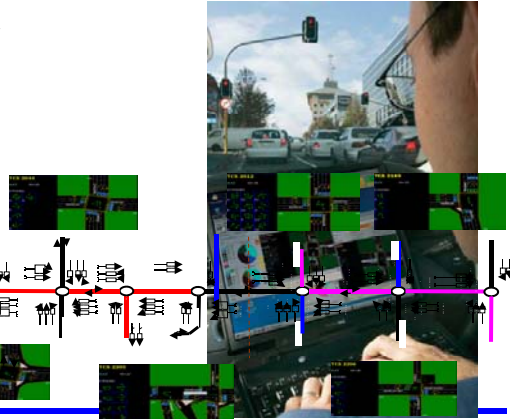


SNUG – IPENZ TG 2014  
[matthew.hoyle@itoc.govt.nz](mailto:matthew.hoyle@itoc.govt.nz)



## What is involved?

- Agree corridor Strategy
- Confirm KPIs
- Auditing
- Monitoring
- Trial Changes
- Physical Works
- Controller Software
- Reporting Through



SNUG – IPENZ TG 2014  
[matthew.hoyle@itoc.govt.nz](mailto:matthew.hoyle@itoc.govt.nz)



## What do they do?

- How?
  - Each intersection
  - Network level - Linking, offsets
- Recommend Physical Improvements
- BCR Assessment?
  - Vehicle Focus
  - Travel times
- Smartroads
  - As per strategy

SNUG – IPENZ TG 2014  
[matthew.hoyle@itoc.govt.nz](mailto:matthew.hoyle@itoc.govt.nz)



# What is Optimisation?



MAKE GIFS AT GIFSOUP.COM

SNUG – IPENZ TG 2014  
[matthew.hoyle@itoc.govt.nz](mailto:matthew.hoyle@itoc.govt.nz)



JOINT TECHNICAL BOARD NEW ZEALAND  
TRANSPORT AGENCY & AUCKLAND TRANSPORT



Auckland  
Transport



# Tools

- SCATS

SNUG – IPENZ TG 2014  
[matthew.hoyle@itoc.govt.nz](mailto:matthew.hoyle@itoc.govt.nz)

JOINT TECHNICAL BOARD NEW ZEALAND  
TRANSPORT AGENCY & AUCKLAND TRANSPORT

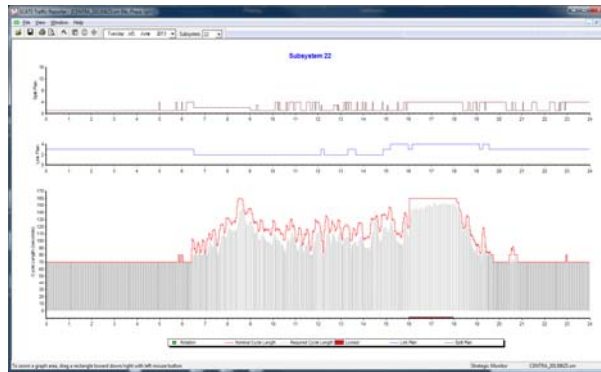


Auckland  
Transport



# Tools

- SCATS

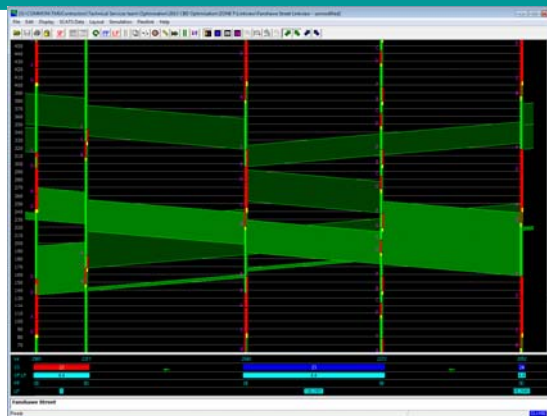


SNUG – IPENZ TG 2014  
[matthew.hoyle@itoc.govt.nz](mailto:matthew.hoyle@itoc.govt.nz)



# Tools

- LinkView



SNUG – IPENZ TG 2014  
[matthew.hoyle@itoc.govt.nz](mailto:matthew.hoyle@itoc.govt.nz)



# Tools

- CAS
- Modelling Packages
- Software Writing Expertise
- Tracking
- Time Distance

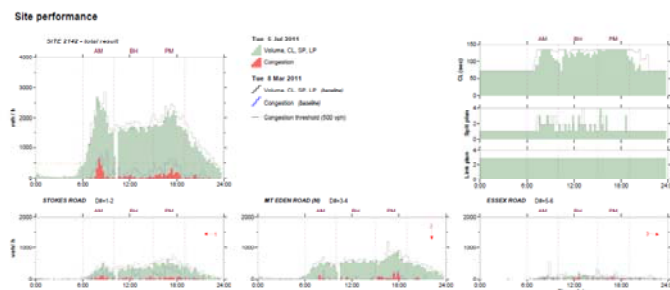
SNUG – IPENZ TG 2014  
[matthew.hoyle@itoc.govt.nz](mailto:matthew.hoyle@itoc.govt.nz)



# Tools

- ARTIS

AUCK - Site 2142 - STOKES ROAD / MTEDEN ROAD / ESSEX ROAD / MTEDEN (H6A331)  
Date: Tue 5 Jul 2011

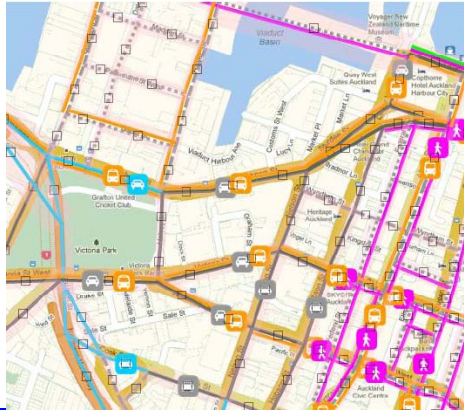


SNUG – IPENZ TG 2014  
[matthew.hoyle@itoc.govt.nz](mailto:matthew.hoyle@itoc.govt.nz)



# Tools

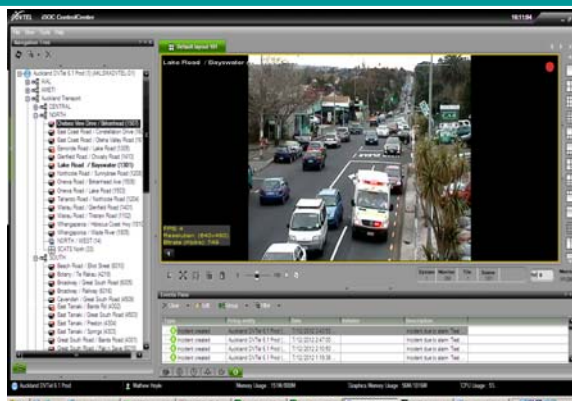
- Smartroads



SNUG – IPENZ TG 2014  
[matthew.hoyle@itoc.govt.nz](mailto:matthew.hoyle@itoc.govt.nz)



# Tools



SNUG – IPENZ TG 2014  
[matthew.hoyle@itoc.govt.nz](mailto:matthew.hoyle@itoc.govt.nz)



## What can be achieved?

- What do you want? Strategy? Mode?
- Weigh up the issues and options
- Solutions?
  - Phasing changes, movement priority
  - Line marking
  - Manage Delay at intersections
  - Progression along corridors (or not!)
- Won't fix design or capacity issues!

SNUG – IPENZ TG 2014  
[matthew.hoyle@itoc.govt.nz](mailto:matthew.hoyle@itoc.govt.nz)



## Typical Benefits

- Can achieve very high BCRs
- Travel Time Savings
- Better alignment with Strategies
  - Pedestrian LOS
  - Accident Reduction
  - Public Transport journey times

SNUG – IPENZ TG 2014  
[matthew.hoyle@itoc.govt.nz](mailto:matthew.hoyle@itoc.govt.nz)





# Challenges

- Strategy agreement
- Balance priorities with Smartroads
- Cater for all demands
- Shaping for future demands?
- Huge project

SNUG – IPENZ TG 2014  
[matthew.hoyle@itoc.govt.nz](mailto:matthew.hoyle@itoc.govt.nz)



Wellesley Kitchener



11/21/13 17:23:03.266

SNUG – IPENZ TG 2014  
[matthew.hoyle@itoc.govt.nz](mailto:matthew.hoyle@itoc.govt.nz)



# Questions



SNUG – IPENZ TG 2014  
[matthew.hoyle@itoc.govt.nz](mailto:matthew.hoyle@itoc.govt.nz)



A JOINT VENTURE BETWEEN NEW ZEALAND  
TRANSPORT AGENCY & AUCKLAND TRANSPORT

