



# New Zealand's Rural Intersection Active Warning System

Hamish Mackie, Mackie Research and Consulting Ltd

[New Zealand Government](#)

## People!



## What is RIAWS?

### Rural Intersection Active Warning System (RIAWS)

**Aim:** reduce fatal and serious casualties at high speed, high risk intersections

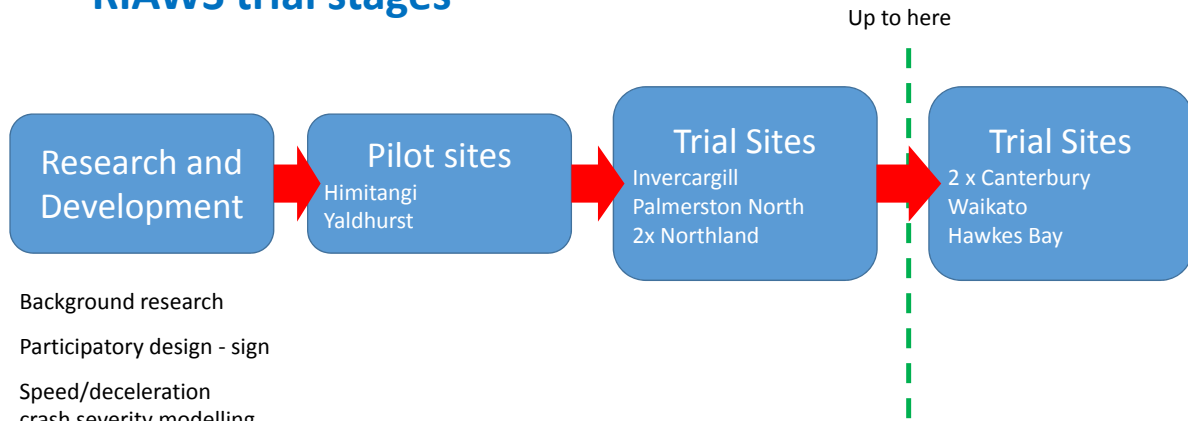
By

1. Slowing motorists on major road intersection approaches
2. Increasing driver state awareness
3. Improving (or not worsening) side-road motorist gap judgement

## How RIAWS works

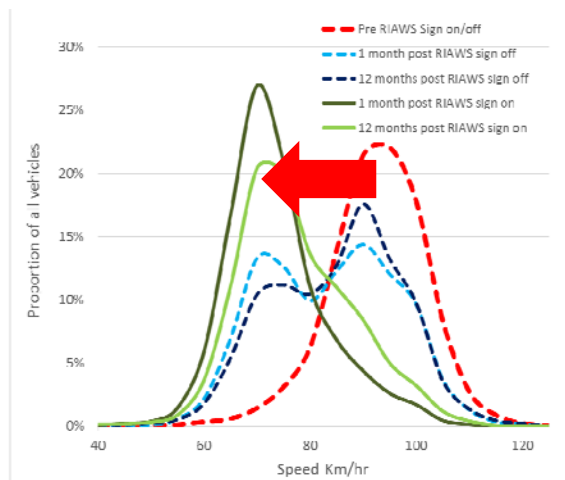


## RIAWS trial stages

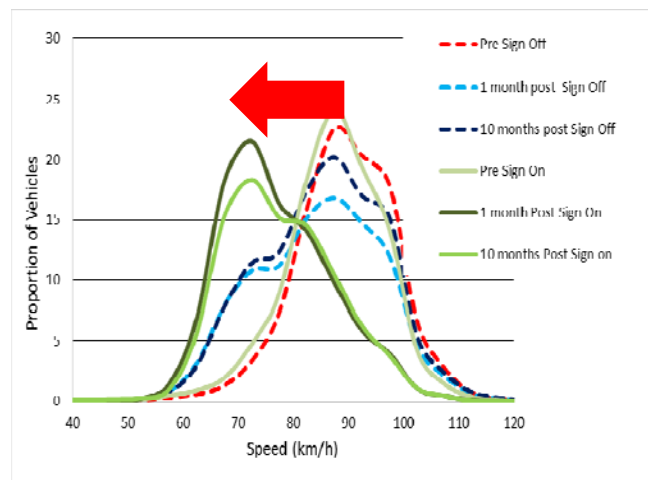


## Sustained speed reduction at trial sites

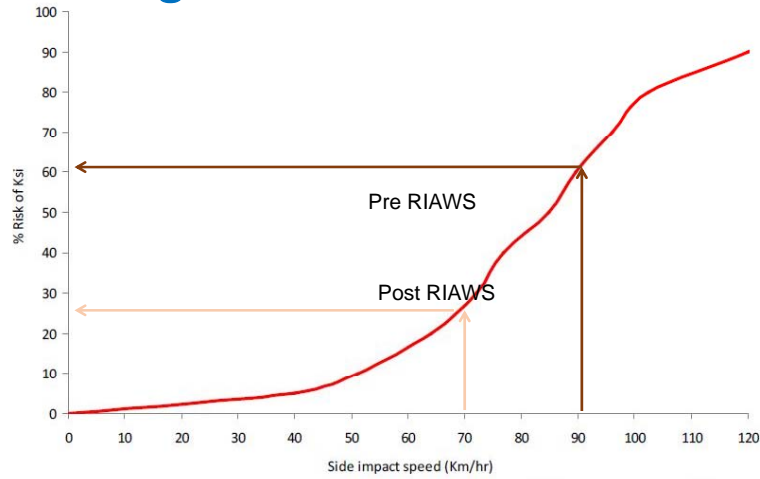
Himitangi Southbound



Buchanans Westbound

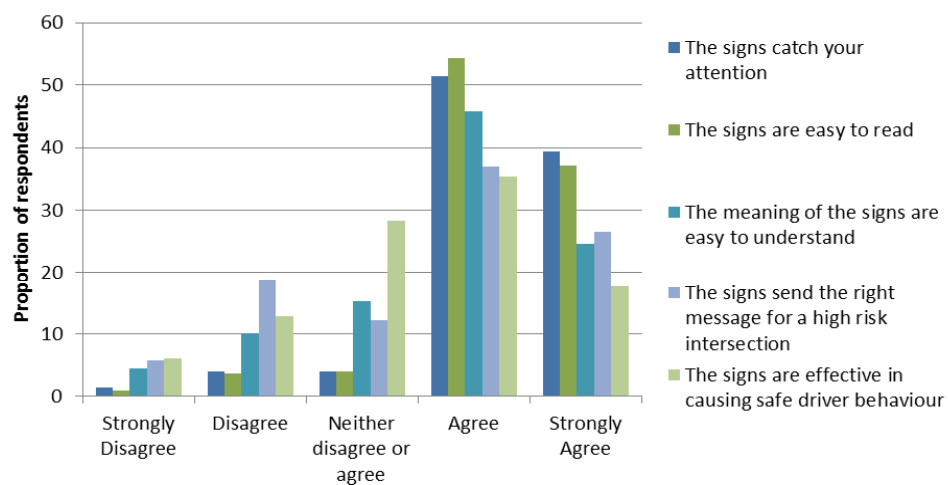


## Himitangi Risk Reduction



Change in side impact Ksi risk based on modal speed change pre/post RIAWS

## Driver perceptions



## Key findings

- RIAWS is effective in reducing rural intersection speed
- Expected BCR approx 6-7 (Rural roundabout 2-3)
- The motoring public support RIAWS and are compliant
- A speed limit sign is more effective than a slow down warning

## Innovation

- Cost-effective and unique rural intersection Safe System solution
- Human centred approach to intersection safety and system development
- Key learnings for National Trials
- Integrated research and evaluation

