

IPENZ TRANSPORTATION CONFERENCE 2014

SAFER JOURNEYS

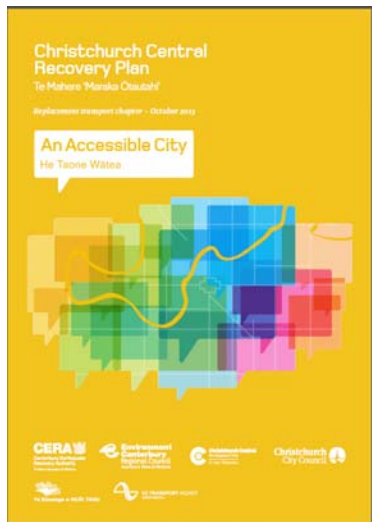
What It Means For Christchurch



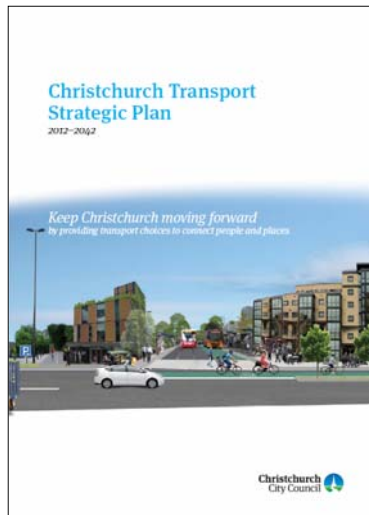
Steffan Thomas
Traffic Operations Manager
Christchurch City Council



An Accessible City



Christchurch Transport Strategic Plan





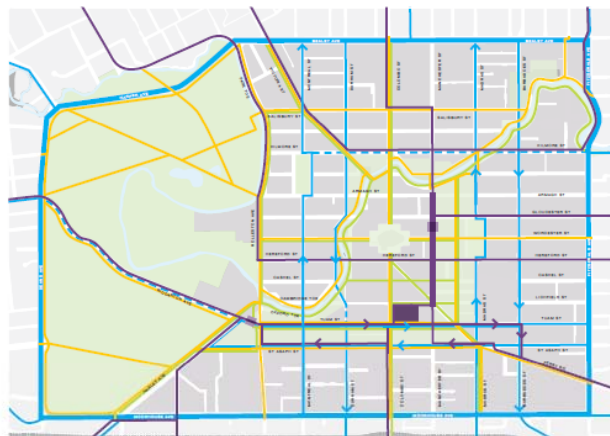
An Accessible City

- Transport Chapter to the Christchurch Central Recovery Plan
- Developed by CERA in partnership with CCC, ECan and NZTA
- Sets out the transport objectives for the CBD including a road use hierarchy



AAC – Road Use Hierarchy

Central city road use hierarchy



 Cycling  Car travel  Walking  Public transport  Bus interchange

Diagram shows prioritised routes for different road modes



AAC – Safer Speeds

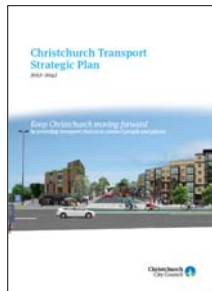


- Vehicle speeds slowed to max 30kph in Inner Zone
- Max 50kph for rest of CBD

Maximum speeds
Inner zone - maximum 30km/hr (including main streets) Outer zone - maximum 50km/hr Core

AAC – Safer Roads and Roadsides

- CBD roads will be predictable and self explaining
- Lower Speed Limits
- Prioritised cycle routes
- Shared Spaces
- Improved Pedestrian Facilities
- Reduction in through-traffic



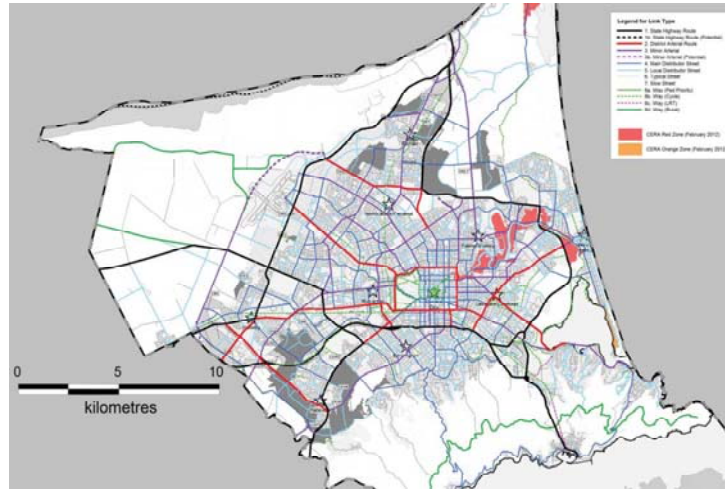
Christchurch Transport Strategic Plan

- **CCC's 30 year Transport vision**
- **Places a strong emphasis on travel choice by establishing strong networks for all transport options during the next 30 years.**

CTSP - Objectives

- Development of a road classification
- Linking with RONS and new growth areas
- Investment in Public Transport infrastructure and priority measures
- Creation of a connected cycle network
- Defined freight routes
- Targeted safety improvements
- Parking Management
- Streetscape improvements

CTSP – Balancing the Network



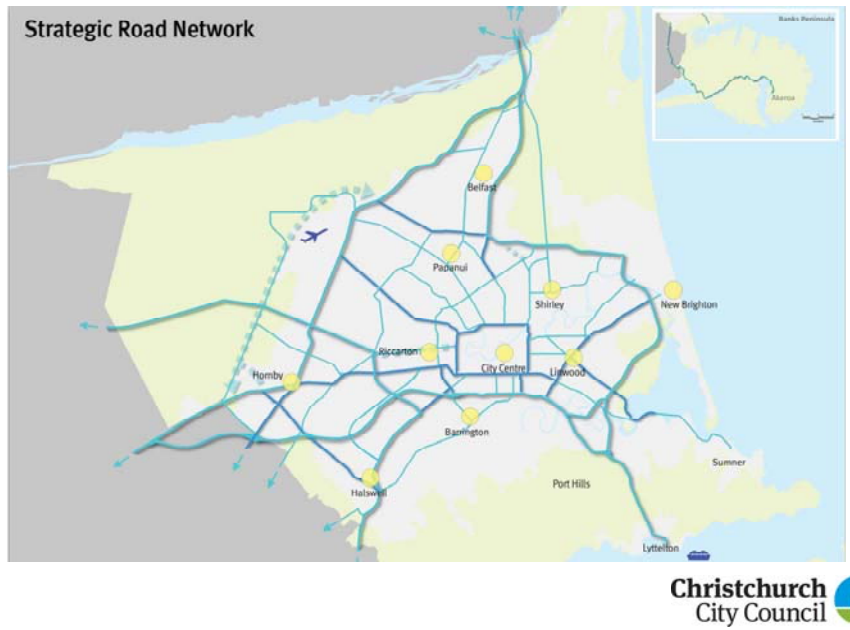
Christchurch
City Council

CTSP – Cycling Network

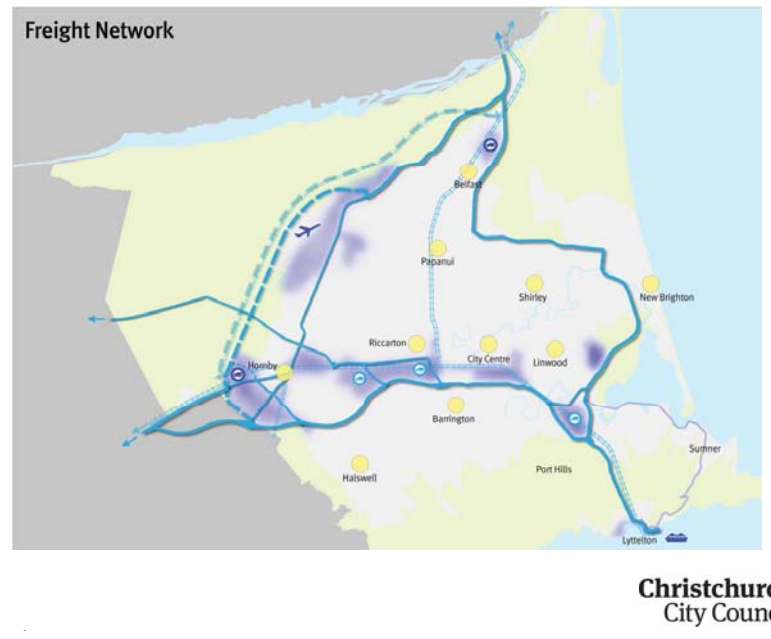


Christchurch
City Council

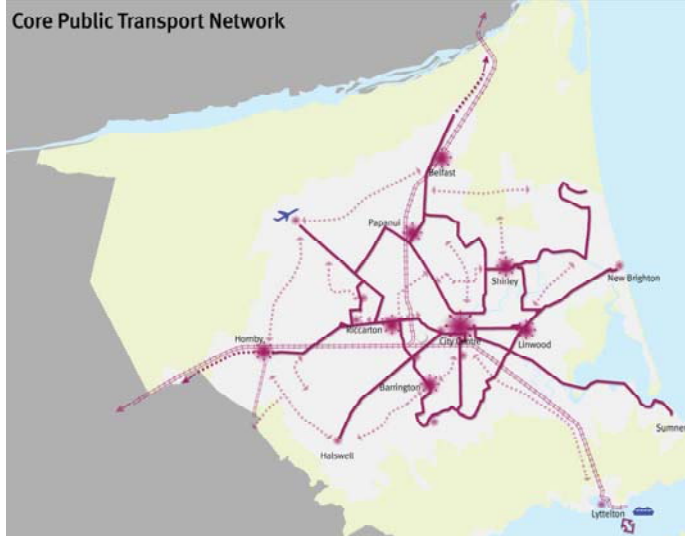
CTSP – Strategic Road Network



CTSP – Freight Network

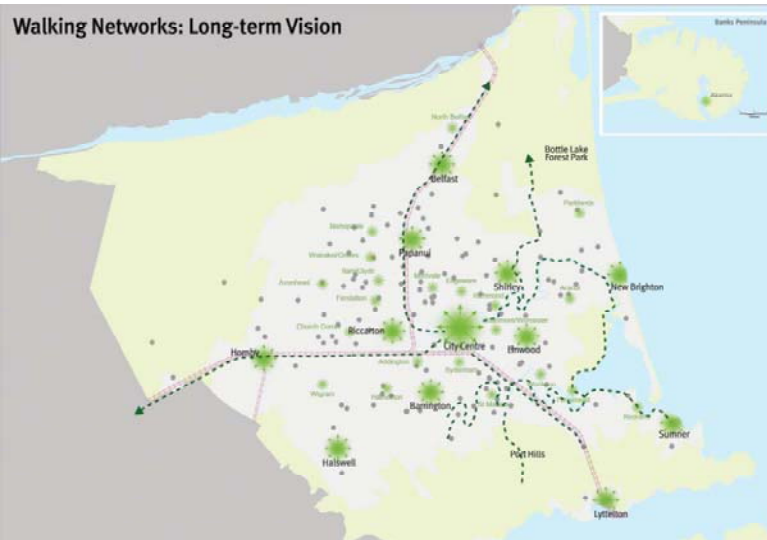


CTSP – Public Transport Network



Christchurch
City Council

CTSP – Walking Network



Christchurch
City Council

Safer Roads and Roadsides – Outside CBD

- Safety improvements
- Route audits and upgrades
- Education
- Major Cycle Routes
- Pedestrian Safety Initiatives
- Route Audits and Upgrades

Safer Speeds – Outside CBD

- Speed Limit Review
- School Speed Zones
- Ilam Road

Ilam Road



Christchurch
City Council 

Ilam Road



Christchurch
City Council 

1960's – We've come along way

