

Rebuilding Kaiapoi The Next Installment

*Author - Jeanette Ward, Abley Transport
Co-Author - Ken Stevenson, Waimakariri District Council*

IPENZ Transportation Group Conference 2015

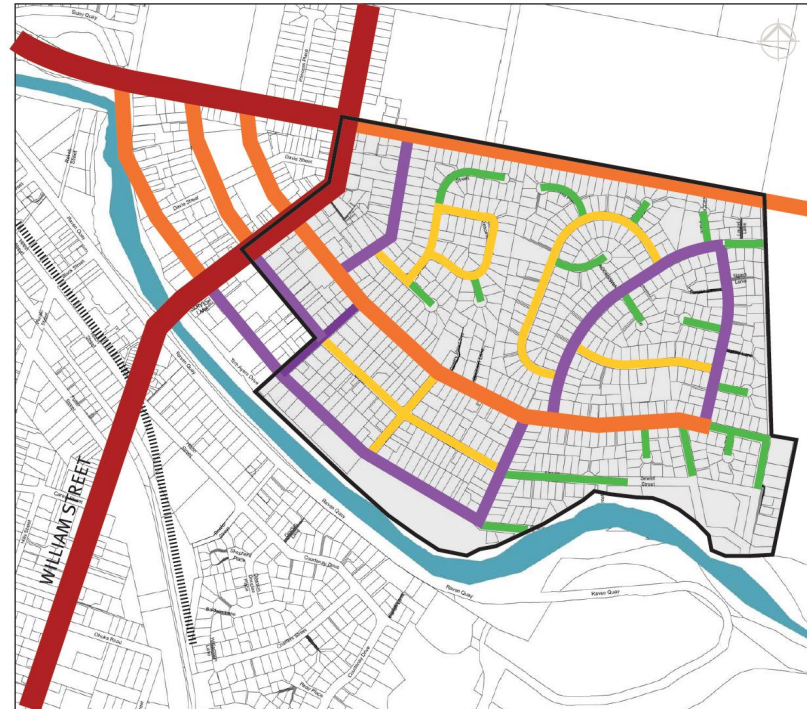
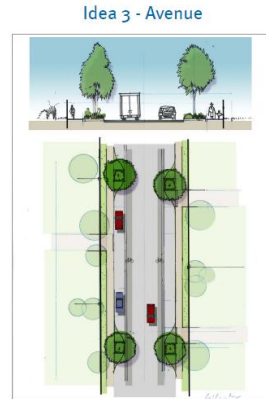
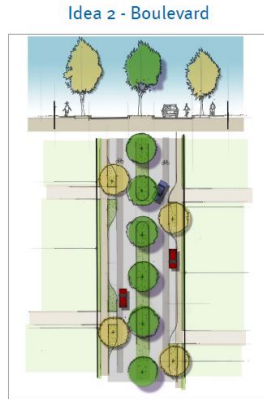
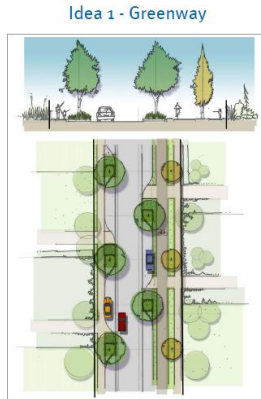
Outline

- Life before the red zones
- The Red Zoning
- Life after the red zoning
- Conclusions
- Life after I had written this paper

Life before the Red Zoning - 2010



Life before the Red Zoning - early 2011



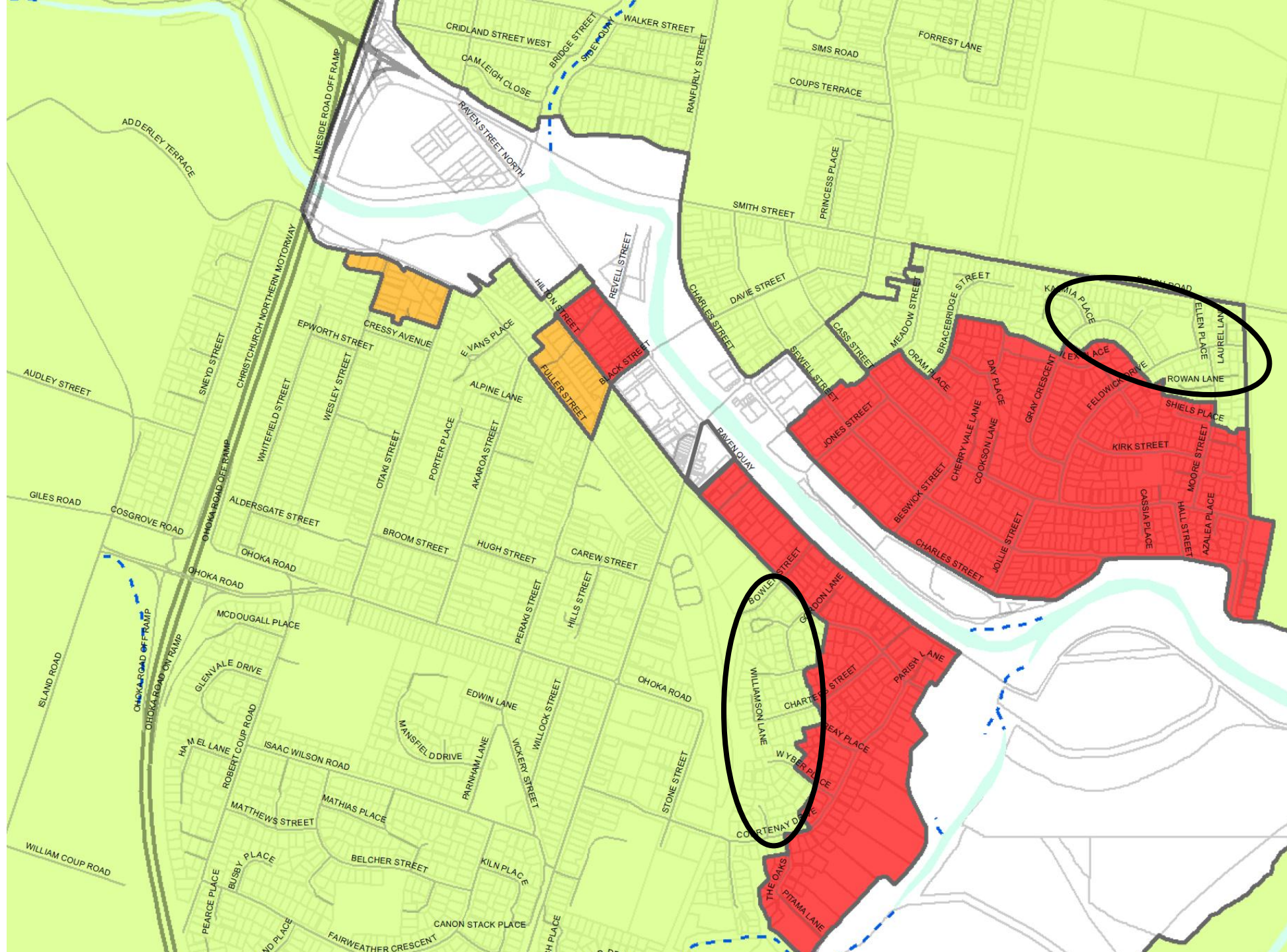
LEGEND

- Main road
- Spine road
- Local area street
- Neighbourhood street
- Residents street
- Project boundary



Later in 2011....the Red Zoning





Life after red zoning - 2012 to 2014



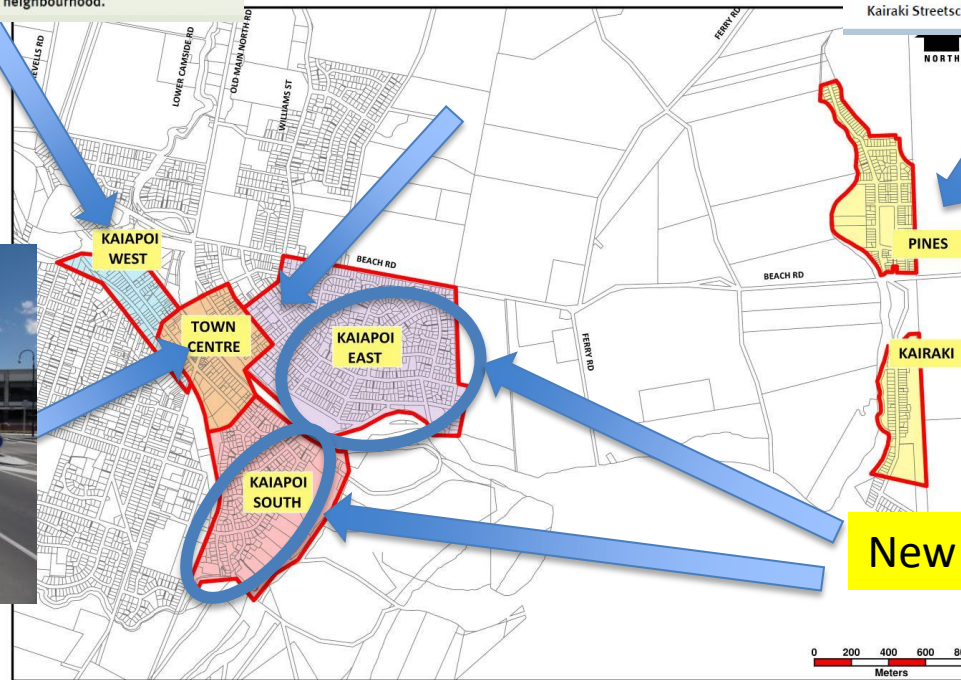
Under construction



Mostly complete



Under construction



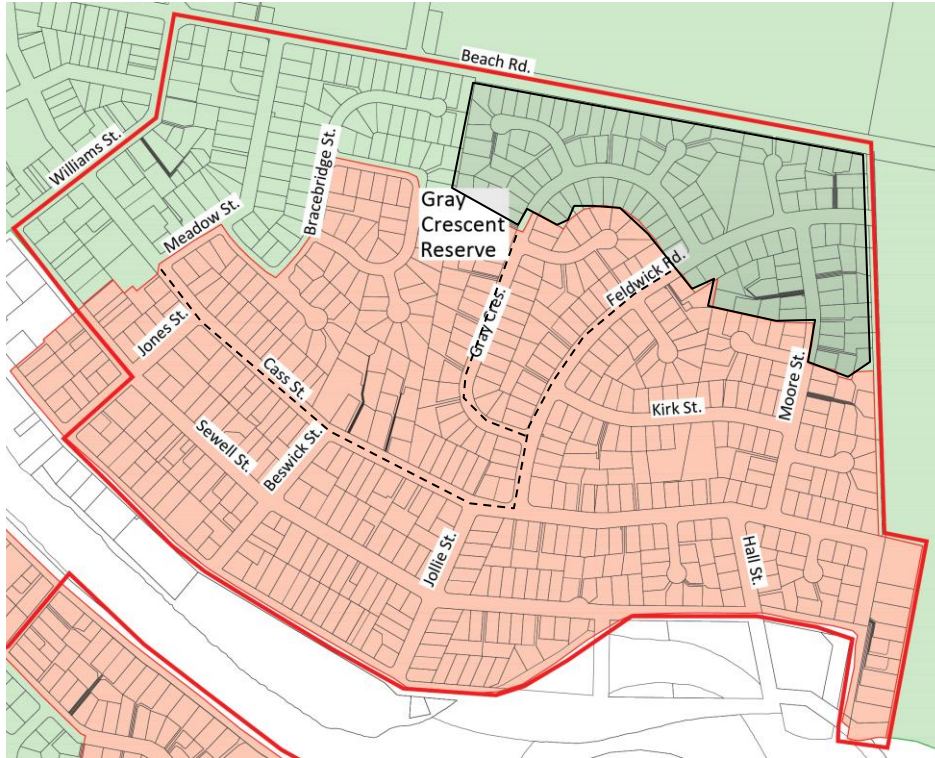
New strategy needed

Life after red zoning Kaiapoi East



Life after red zoning

The Strategy - Kaiapoi East



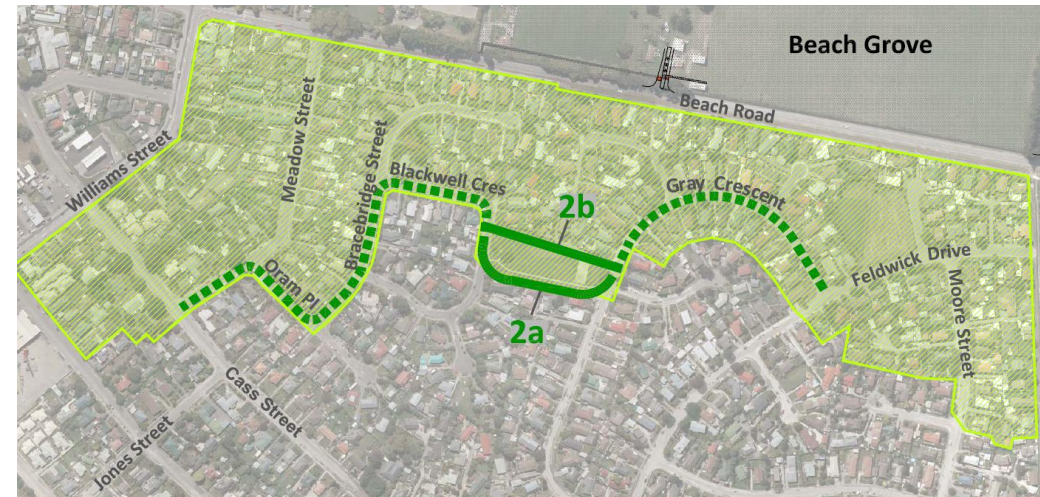
- Community isolation?
- New roads?
- Who would fund them?
- Existing services?
- Future land use?

Life after red zoning

The Options - Kaiapoi East



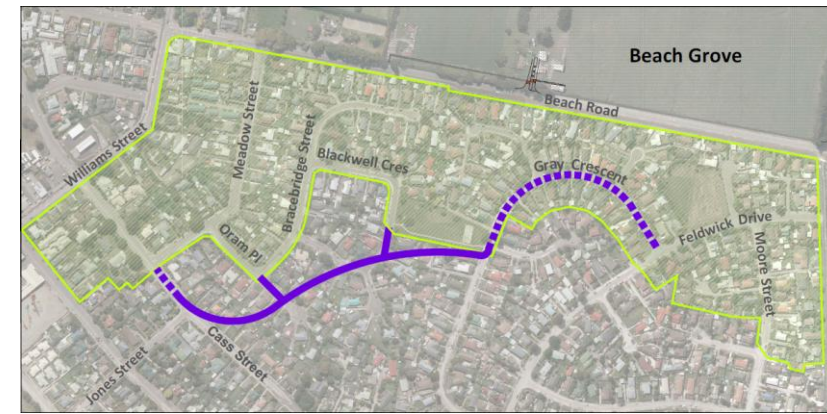
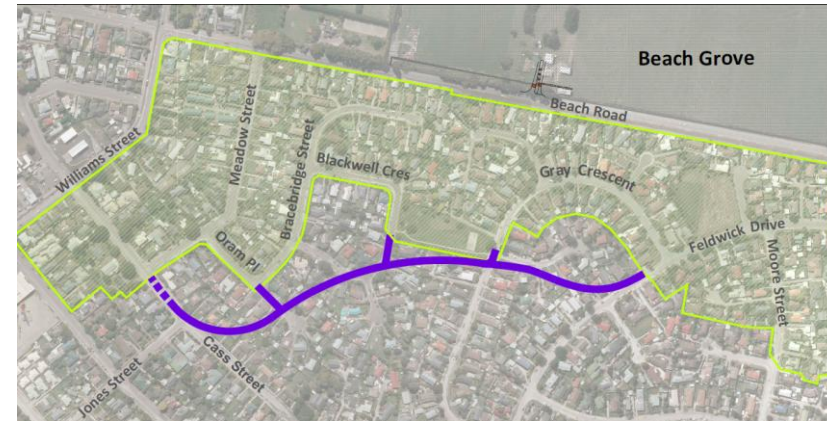
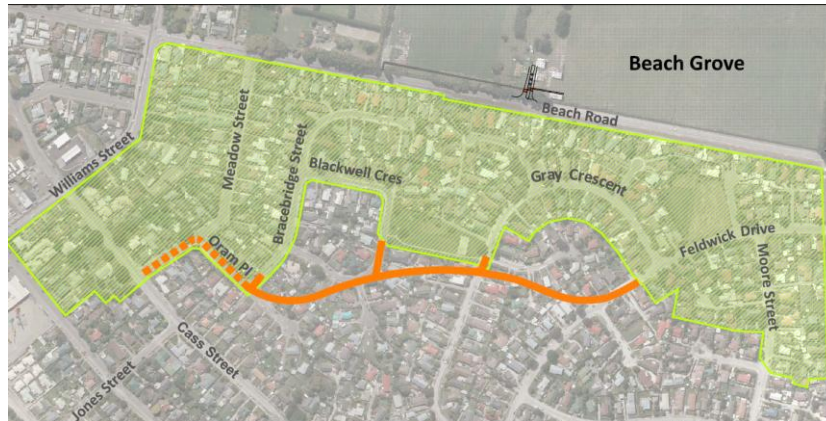
Retain key existing roads



Join up some existing roads

Life after red zoning

The Options - Kaiapoi East



New roads

Conclusions

- Red zoning not identified as a risk at the outset but design process was adaptive to change.
- Red zoning on this scale is a new challenge!
- Kaiapoi East - alternative access options are estimated to cost less or no more than the cost of rebuilding the existing access route.
- Kaiapoi South - alternative road alignment is estimated to cost more than the cost of rebuilding the existing access route.
- The authors look forward to discussing the access options with them because as engineers we can only predict what the community want but they may ultimately tell us otherwise!

Life after writing this paper Consultation



This leaflet outlines a range of options for continuing access to the Kaiapoi East area and invites you to let us know your views at a local drop-in session, or in writing on the enclosed form.



Jeanette Ward

**Contact
the office**

T

T +64 9 974 9820 (Akl)

M

T +64 3 377 4703 (Chch)

E

W www.abley.com

Auckland

Level 8,
57 Fort Street
P O Box 911336
Auckland 1142
New Zealand

Christchurch

Level 1 and 2,
30a Carlyle Street.
PO Box 25350
Christchurch 8144
New Zealand

Connect**Better**



Canterbury Earthquake Rebuild

