



Enhanced Identification of High-Risk Intersections

ConnectBetter



Haris Zia
Graduate Transportation Engineer



Auckland (2013)

- 233 Fatal or Serious injury crashes at intersections
- 79% occurred at intersections with no previous fatal or serious injury crashes in past 5 years

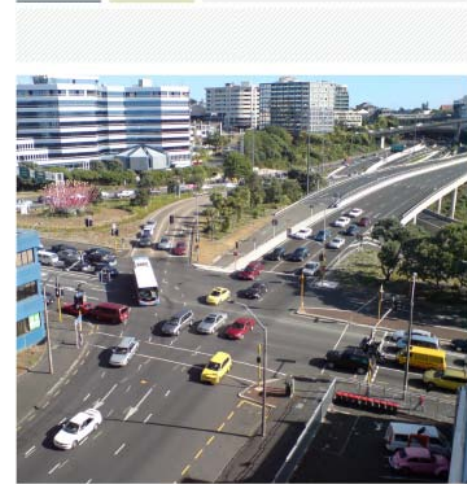


High-Risk Intersections Guide

Guides identification, targeting and remediation of key road safety issues at high-risk intersections



High-risk intersections guide



New Zealand Government

Estimating the Risk of Death and Serious Injury



Speed Limit



Intersection Form and Type



Crash Movement Types



Calculating a Risk Profile

- Accessible information
- Understanding of assessment techniques
- Approximately 30 minutes per intersection
- Problem?





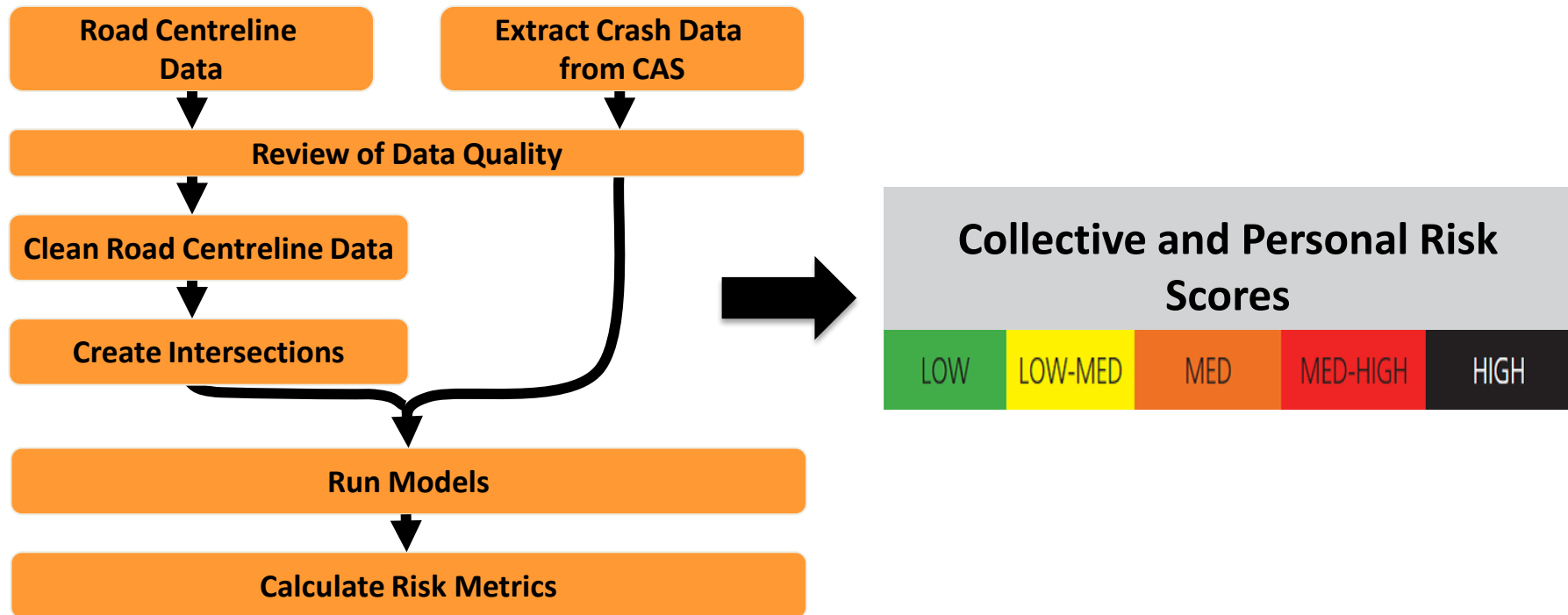
Risk Profiling a City

The right tool for the job:



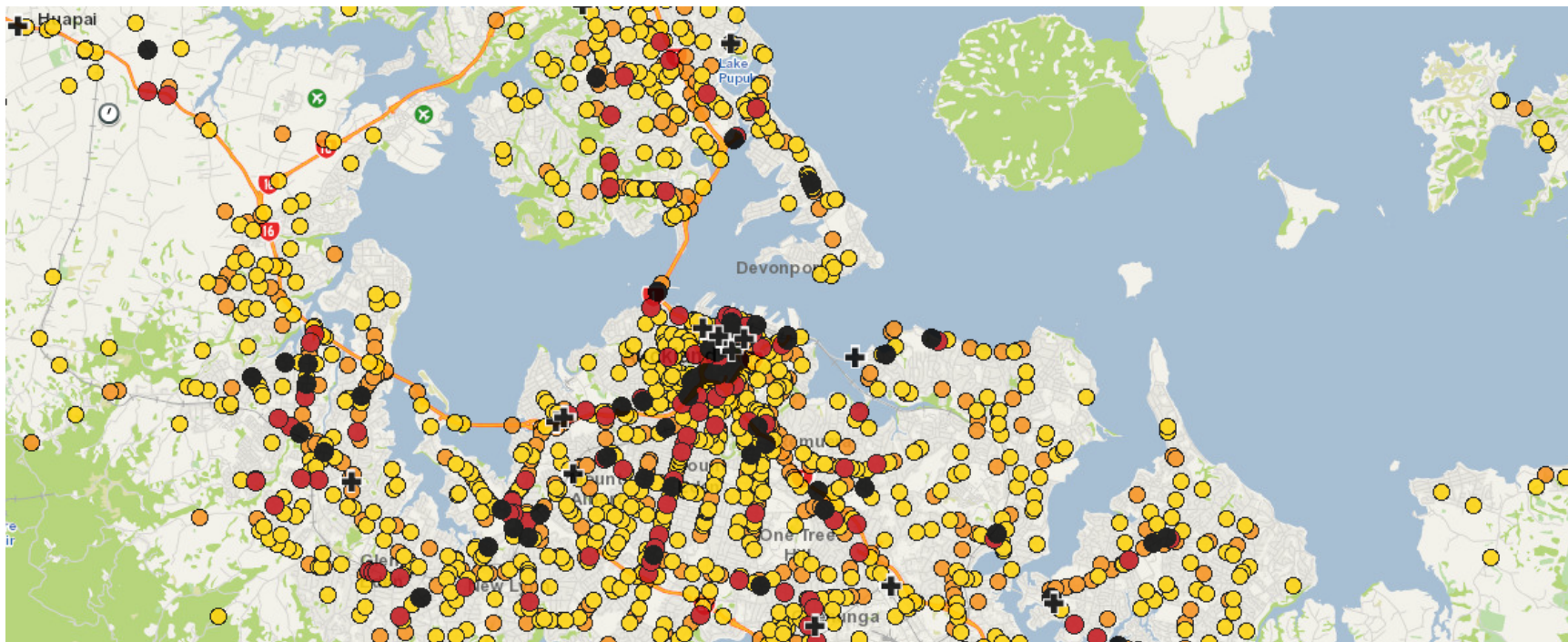


Methodology Overview

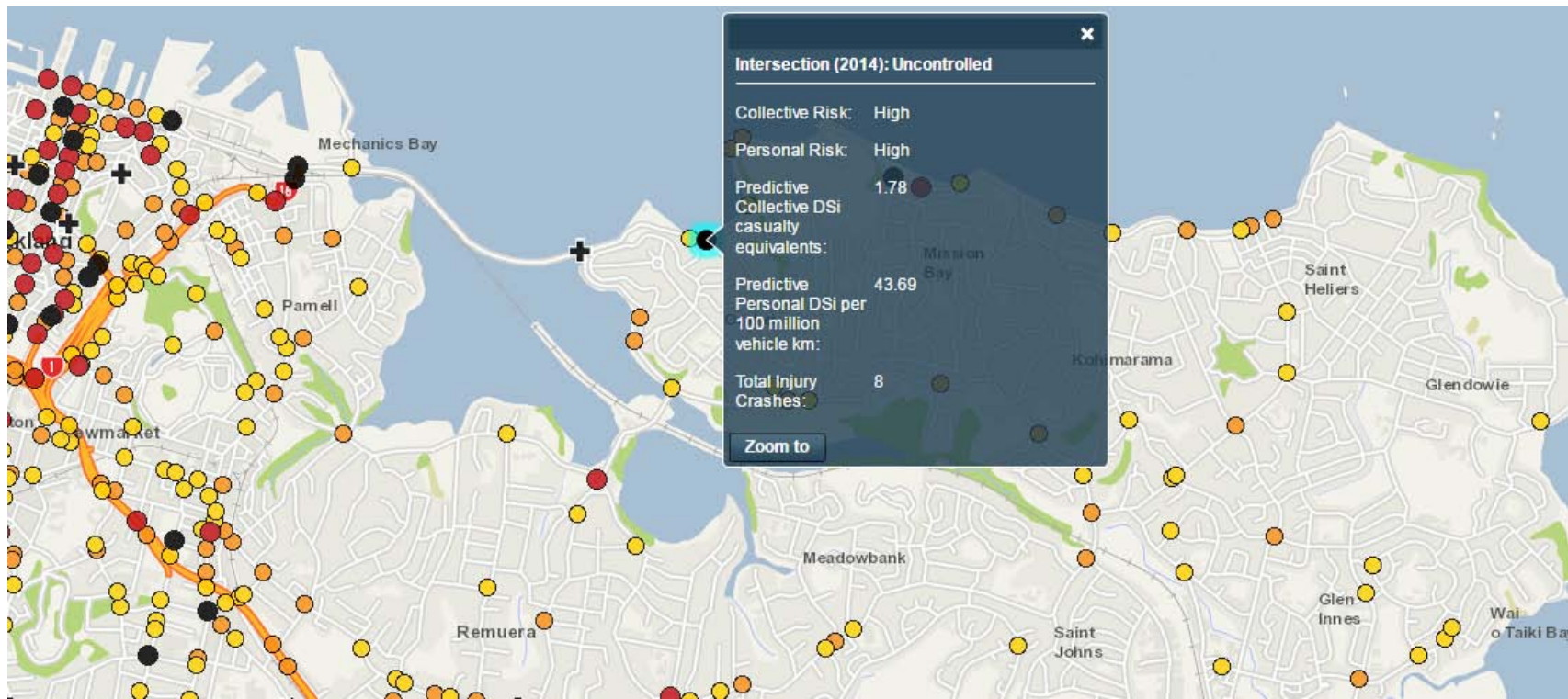




Outputs in Web Format



Outputs in Web Format





Conclusions

- High-risk metrics approach represents a shift away from a wholly reactive response to road safety.
- Key to identifying high risk intersections is to undertake analysis at a network wide level → GIS
- Unlock the true value of transport data and save lives!

Contact

Haris Zia

T +64 3 371 0032

M +64 20 4019 8839

E haris.zia@abley.com

Contact the office

T +64 9 974 9820 (Aklid)

T +64 3 377 4703 (Chch)

W www.abley.com

Auckland

Level 8,
57 Fort Street
P O Box 911336
Auckland 1142
New Zealand

Christchurch

Level 1 and 2,
30a Carlyle Street
PO Box 25350
Christchurch 8144
New Zealand

ConnectBetter

