

---

# Safe Roads – The Unique Alliance



## Why was the Alliance formed?

- The Safe Roads Alliance was established in 2015 to accelerate the work of improving safety on high risk rural state highway roads
- Too many of us are dying or being seriously injured on New Zealand roads: over 320 per year, ***an average of 27 per month***
- Head on and run-off-road accidents account for 75% of crashes where people are killed or seriously injured
- 12,862 people are seriously injured





## Our Goal

- To save lives: to reduce deaths and serious injuries and improve the safety rating (Kiwirap) of highways
- Government is investing \$600 million to make roads and roadsides safer across the highways network to save 900 deaths and serious injuries
- To deliver the safety benefits, we need to bring the public along with us. Effective community engagement is needed.



## Why an Alliance?

- A collaborative working arrangement between an owner and private companies to deliver projects
- Structured to capitalise on the relationships between the parties, removing organisational barriers and encouraging effective integration
- An Alliance model is usually chosen for complex or large projects
- Effective for delivering a consistent national programme, rather than individual projects

---

## Who is in the Safe Roads Alliance?

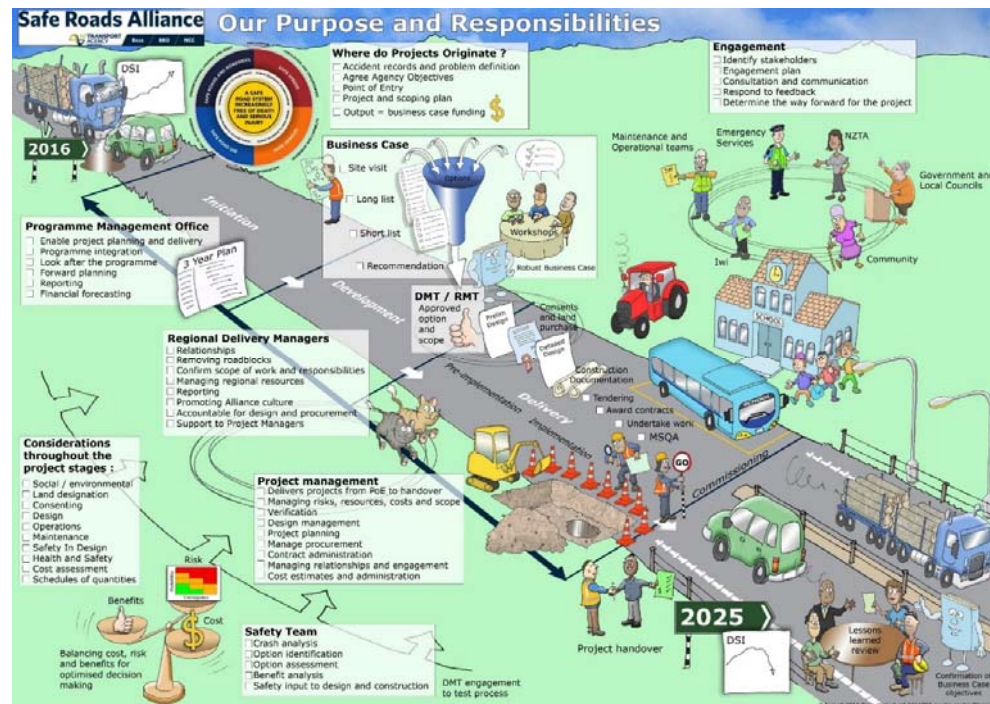
- NZ Transport Agency
- Beca
- Bloxam, Burnett and Olliver (BBO)
- Northern Civil Consulting (NCC)
- Corben Consulting

## Our regions

- Auckland/Northland
- BoP
- Waikato – including central services team in Hamilton
- Central
- Southern

# Why are we Unique

- We develop projects from inception (Point of Entry) to hand over after construction.





## Why are we Unique

- We need to be fully integrated within the NZ Transport Agency at all levels and in all locations
- We deliver a programme of projects
- Our scope is constantly changing as we respond to prioritisation, community feedback, resourcing and integration with other factors.
- Our project managers perform the role of NZTA PM's and traditional consultant PM's.
- We do not have a constructor in the Alliance.
- Our team is centrally managed and projects are regionally delivered.
- We often deliver projects with resilience or efficiency components mixed with safety outcomes.
- We use a government/enterprise wide programming and risk management tool – Planview
- We draw on many skills and specialisations from each organisation using them on a as and when needed basis.
- We recognise the need for effective comms and engagement and have a full time team (we acknowledge it is “their road” not ours)





## What does our programme of work look like?

### 55 projects nationwide

Currently:

27 in development (Single Stage Business and Strategic case)

14 in pre-implementation phase

5 in construction, 5 complete

3 negotiated early phase works

### Other works:

- Safer rail crossings – working with NZTA and KiwiRail
- Improvements for the existing Highway route through the top of the South Island (SH7-65-6-63) - 300km route, will need to carry the SH1 traffic for a long time yet, and needs to be upgraded to be a suitable alternative to SH1 in the long term.



# Example Waikato/BOP Project Map



# Where are our projects?

	Projects	Upcoming projects	Portfolio value	Length of road covered (km)
<b>Auck/North</b>	8	1	\$147.9m	192
<b>Waikato</b>	16	0	\$180.0m	488
<b>Bay of Plenty</b>	7	0	\$103.9m	142
<b>Central</b>	12	2	\$75.7m	396
<b>Southern</b>	9	0	\$110.6m	338

STATE HIGHWAY - SAFE ROADS - ASSET IMPROVEMENT PROJECTS PROGRAMME 2016/17 - 2017/18 Updated: 23 January 2017

Region	Project Name	Estimated Construction Cost	Pre-Qual	Pre-Qual	2016/17	2017/18	2018/19	2019/20	2020/21	2021/22	2022/23	2023/24	2024/25	2025/26	2026/27	2027/28	2028/29	2029/30
Central	343 Hamilton to Mt Messenger Corridor Stage 3 Terrain	\$1,500	High	High	Pre-Programme	Programme	Programme	Programme	Programme	Programme	Programme	Programme	Programme	Programme	Programme	Programme	Programme	Programme
Waikato/Bay	342 Waikato to Roper Stage 2	\$250	High	High	Pre-Programme	Programme	Programme	Programme	Programme	Programme	Programme	Programme	Programme	Programme	Programme	Programme	Programme	Programme
Waikato/Bay	342 Cambridge to Palmer Stage 1	\$2,500	High	High	Pre-Programme	Programme	Programme	Programme	Programme	Programme	Programme	Programme	Programme	Programme	Programme	Programme	Programme	Programme
Southern	347 Waipara to Waikato	\$2,500	High	High	Pre-Programme	Programme	Programme	Programme	Programme	Programme	Programme	Programme	Programme	Programme	Programme	Programme	Programme	Programme
Southern	343 Dunedin to Fairlie	\$3,000	High	High	Pre-Programme	Programme	Programme	Programme	Programme	Programme	Programme	Programme	Programme	Programme	Programme	Programme	Programme	Programme
Waikato/Bay	343 Hamilton to Mt Messenger Corridor Stage 2 Hamilton	\$3,500	High	High	Pre-Programme	Programme	Programme	Programme	Programme	Programme	Programme	Programme	Programme	Programme	Programme	Programme	Programme	Programme
Central	342 Waikato to Bay View*	\$700	High	High	Pre-Programme	Programme	Programme	Programme	Programme	Programme	Programme	Programme	Programme	Programme	Programme	Programme	Programme	Programme
Central	342 Mt Messenger to Hamilton 2	\$2,500	High	High	Pre-Programme	Programme	Programme	Programme	Programme	Programme	Programme	Programme	Programme	Programme	Programme	Programme	Programme	Programme
Central	342 Palmer to Waikato*	\$1,500	High	High	Pre-Programme	Programme	Programme	Programme	Programme	Programme	Programme	Programme	Programme	Programme	Programme	Programme	Programme	Programme
Southern	348 Dunedin to Port Chalmers*	\$1,500	High	High	Pre-Programme	Programme	Programme	Programme	Programme	Programme	Programme	Programme	Programme	Programme	Programme	Programme	Programme	Programme
Waikato/Bay	342 Hamilton to Whangarei*	\$8,000	High	High	Pre-Programme	Programme	Programme	Programme	Programme	Programme	Programme	Programme	Programme	Programme	Programme	Programme	Programme	Programme
Waikato/Bay	342 Cambridge to Palmer Stage 2	\$700	High	High	Pre-Programme	Programme	Programme	Programme	Programme	Programme	Programme	Programme	Programme	Programme	Programme	Programme	Programme	Programme
Waikato/Bay	342 Waikato to Roper Stage 2	\$2,500	High	High	Pre-Programme	Programme	Programme	Programme	Programme	Programme	Programme	Programme	Programme	Programme	Programme	Programme	Programme	Programme
Central	342 Mt Messenger to Hamilton A & B	1,700	High	High	Pre-Programme	Programme	Programme	Programme	Programme	Programme	Programme	Programme	Programme	Programme	Programme	Programme	Programme	Programme
Waikato/Bay	343 To Ngairu Junction to Papanui*	\$3,500	High	High	Pre-Programme	Programme	Programme	Programme	Programme	Programme	Programme	Programme	Programme	Programme	Programme	Programme	Programme	Programme
Waikato/Bay	345 Waikato to Mt to SH8	\$800	High	High	Pre-Programme	Programme	Programme	Programme	Programme	Programme	Programme	Programme	Programme	Programme	Programme	Programme	Programme	Programme
Southern	347A Merituna to Burnside	\$300	High	High	Pre-Programme	Programme	Programme	Programme	Programme	Programme	Programme	Programme	Programme	Programme	Programme	Programme	Programme	Programme
Waikato/Bay	347A Whangarei Urban Bridge	100	High	High	Pre-Programme	Programme	Programme	Programme	Programme	Programme	Programme	Programme	Programme	Programme	Programme	Programme	Programme	Programme
Waikato/Bay	347 To Ngairu to Whangarei	\$700	High	High	Pre-Programme	Programme	Programme	Programme	Programme	Programme	Programme	Programme	Programme	Programme	Programme	Programme	Programme	Programme
Waikato/Bay	342 Waikato Road to Otago*	\$1,000	High	High	Pre-Programme	Programme	Programme	Programme	Programme	Programme	Programme	Programme	Programme	Programme	Programme	Programme	Programme	Programme
Auckland/North	343A Highgate Creek to Whangarei	\$400	High	High	Pre-Programme	Programme	Programme	Programme	Programme	Programme	Programme	Programme	Programme	Programme	Programme	Programme	Programme	Programme
Waikato/Bay	345 Hamilton to Otago*	\$400	High	High	Pre-Programme	Programme	Programme	Programme	Programme	Programme	Programme	Programme	Programme	Programme	Programme	Programme	Programme	Programme
Waikato/Bay	345 Cambridge to Ngaparua*	\$400	High	High	Pre-Programme	Programme	Programme	Programme	Programme	Programme	Programme	Programme	Programme	Programme	Programme	Programme	Programme	Programme
Waikato/Bay	342 Dunedin to To Ngairu Junction	\$1,500	High	High	Pre-Programme	Programme	Programme	Programme	Programme	Programme	Programme	Programme	Programme	Programme	Programme	Programme	Programme	Programme
Auckland/North	345 Great Gully Safety Improvements*	\$200	High	High	Pre-Programme	Programme	Programme	Programme	Programme	Programme	Programme	Programme	Programme	Programme	Programme	Programme	Programme	Programme
Waikato/Bay	343 Hamilton to Mt Messenger Corridor Stage 2	\$1,700	High	High	Pre-Programme	Programme	Programme	Programme	Programme	Programme	Programme	Programme	Programme	Programme	Programme	Programme	Programme	Programme
Waikato/Bay	342 Waikato to Otago*	\$400	High	High	Pre-Programme	Programme	Programme	Programme	Programme	Programme	Programme	Programme	Programme	Programme	Programme	Programme	Programme	Programme

1. For further information on the Safe Roads Programme, please contact:  
 Transport Agency - Central Region  
 100 Lambton Quay  
 Wellington  
 0800 553 000  
 7 New Zealand Infrastructure Limited  
 100 Lambton Quay

2. Expected Construction Cost and Pre-Qual levels may vary due to outcome of the business case process.  
 3. Time frames are dependent on the successful outcome of the business case  
 4. \* Denotes projects that may be separated and delivered in packages  
 5. Projects awarded have been removed from the programme  
 6. Projects beyond 12/18 year have not been shown  
 7. \*\* Denotes TBC status until the scope of works are defined

Programme Status Summary - Ambition Programme

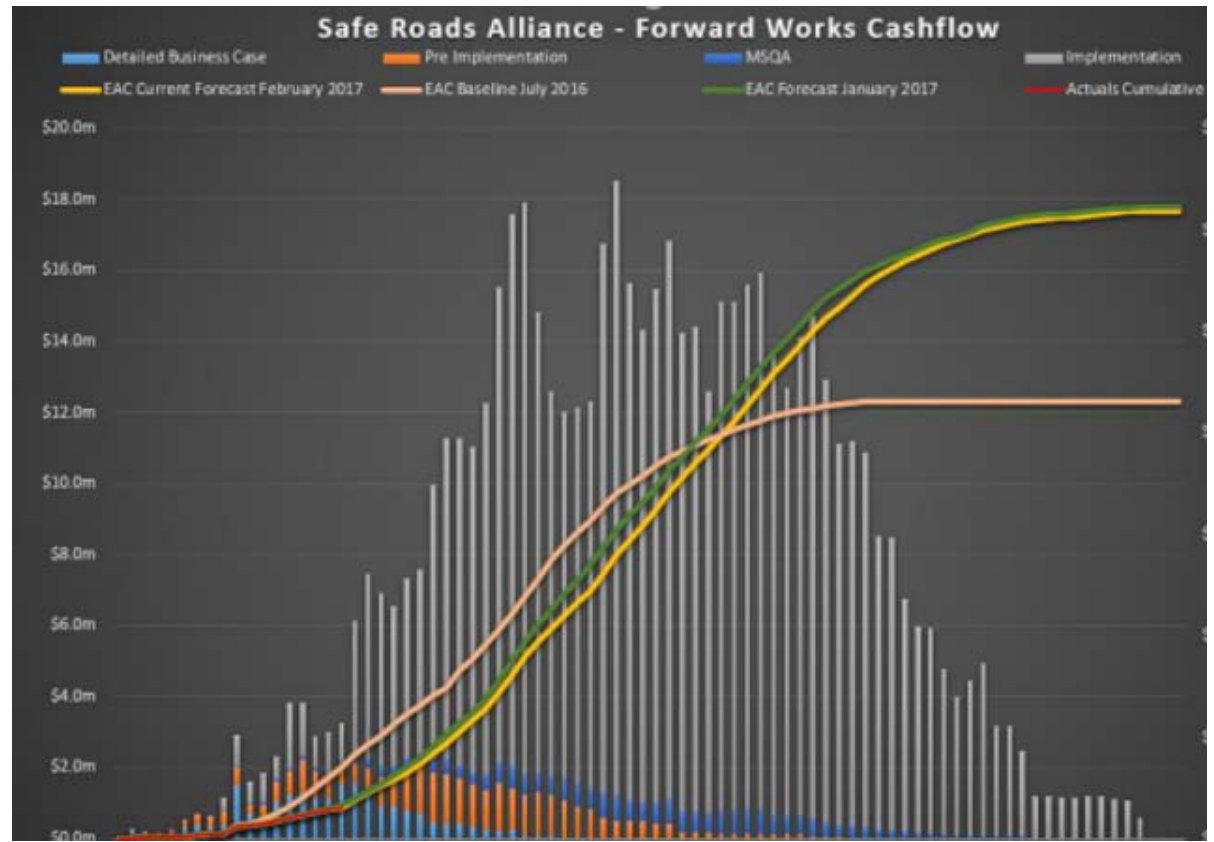
This programme is current as at 23 February 2017 but it is dynamic and may have changed since that date.

Region	Project ID	Project Name	Pre-Qual	Pre-Qual	2017/18													
					Jan	Feb	Mar	Apr	May	Jun	Jul	Aug	Sep	Oct	Nov	Dec		
Auckland	343A	Highgate Creek to Whangarei	High	High														
	343B	Hamilton to Otago*	High	High														
	343C	Cambridge to Ngaparua*	High	High														
	343D	Waikato to Otago*	High	High														
	343E	Waikato Road to Otago*	High	High														
	343F	Waikato to Roper Stage 2	High	High														
	343G	Waikato to Roper Stage 1	High	High														
	343H	Waikato to Roper Stage 2	High	High														
	343I	Waikato to Roper Stage 2	High	High														
	343J	Waikato to Roper Stage 2	High	High														
Waikato	342A	Cambridge to Palmer Stage 1	High	High														
	342B	Cambridge to Palmer Stage 2	High	High														
	342C	Cambridge to Palmer Stage 2	High	High														
	342D	Cambridge to Palmer Stage 2	High	High														
	342E	Cambridge to Palmer Stage 2	High	High														
	342F	Cambridge to Palmer Stage 2	High	High														
	342G	Cambridge to Palmer Stage 2	High	High														
	342H	Cambridge to Palmer Stage 2	High	High														
	342I	Cambridge to Palmer Stage 2	High	High														
	342J	Cambridge to Palmer Stage 2	High	High														
Bay of Plenty	347A	Waipara to Waikato	High	High														
	347B	Waipara to Waikato	High	High														
	347C	Waipara to Waikato	High	High														
	347D	Waipara to Waikato	High	High														
	347E	Waipara to Waikato	High	High														
	347F	Waipara to Waikato	High	High														
	347G	Waipara to Waikato	High	High														
	347H	Waipara to Waikato	High	High														
	347I	Waipara to Waikato	High	High														
	347J	Waipara to Waikato	High	High														
Central	342A	Cambridge to Palmer Stage 1	High	High														
	342B	Cambridge to Palmer Stage 2	High	High														
	342C	Cambridge to Palmer Stage 2	High	High														
	342D	Cambridge to Palmer Stage 2	High	High														
	342E	Cambridge to Palmer Stage 2	High	High														
	342F	Cambridge to Palmer Stage 2	High	High														
	342G	Cambridge to Palmer Stage 2	High	High														
	342H	Cambridge to Palmer Stage 2	High	High														
	342I	Cambridge to Palmer Stage 2	High	High														
	342J	Cambridge to Palmer Stage 2	High	High														
Southern	348A	Dunedin to Port Chalmers*	High	High														
	348B	Dunedin to Port Chalmers*	High	High														
	348C	Dunedin to Port Chalmers*	High	High														
	348D	Dunedin to Port Chalmers*	High	High														
	348E	Dunedin to Port Chalmers*	High	High														
	348F	Dunedin to Port Chalmers*	High	High														
	348G	Dunedin to Port Chalmers*	High	High														
	348H	Dunedin to Port Chalmers*	High	High														
	348I	Dunedin to Port Chalmers*	High	High														
	348J	Dunedin to Port Chalmers*	High	High														

TK1    optimism, consistency  
Tony Keyte, 29/03/2017

# How will we get there

As at Feb 2017



**Slide 11**

---

**TK2**

**snip**

Tony Keyte, 29/03/2017

# Monitoring Projects

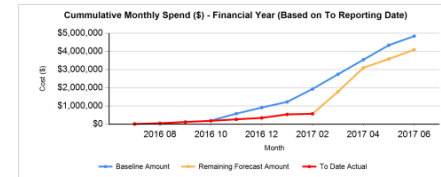
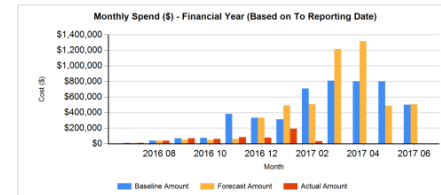


## Project Status Report

Project Name: SH3: Ohaupo to Te Awamutu				
Manager: Tony Richardson				
Reporting Period:	From: 1/02/2017 To: 28/02/2017			
Sponsor:	Michelle Te Wharau			
Forecast End Date:	09/07/2018			
Safe Roads - Current Stage:	Implementation			
<b>Key Health Indicators</b>				
Overall Health Indicator	Current: ● Trend: ➡			
Summary:	Works proceeding well. Ongoing liaison with landowners is going well.			
Key Decisions Required:	None			
Agreed Change to Plan	None			
<b>Key Health Indicators</b>				
	Current	Trend	Comment	
1. Timeline	●	➡	Works on programme.	
2. Budget	●	➡	Works within budget. Variation Order to be prepared by March as per original contract award agreement.	
3. Viability of Benefits	●	➡	The total DSI savings predicted are 11 over the next 10 years.	
4. Scope	●	➡	Stage 2 of the works has been put on hold / deferred, which will limit the overall project benefits if it does not materialise.	
5. Risks	●	➡	Risks are managed and well covered.	
6. Resources	●	↑	In hand.	
7. Engagement	●	↑	Engagement is in hand.	
8. Development Funding	●	➡	Not applicable	
9. Pre-Implementation Funding	●	➡	In place and approved.	
10. Construction Funding	●	➡	In place and approved.	
<b>Key Milestones</b>				
Milestone Description	Baseline	Forecast/Actual	Status	State
Issue Practical Completion Certificate	23/05/2017	2/06/2017	●	Open
Issue Defects Liability Certificate	27/06/2018	9/07/2018	●	Open
Milestones with a forecast date from reporting date will be shown plus any late milestones.				

Type	Financials					
	Funding Approved	Budget	Actual	Variance	Baseline Budget	EAC
Strategic Case	\$0	\$0	\$0	\$0	\$0	\$0
Business Case	\$0	\$0	\$0	\$0	\$0	\$0
Programme	\$0	\$0	\$0	\$0	\$0	\$0
Business Case	\$0	\$0	\$0	\$0	\$0	\$0
Initiative Business Case	\$0	\$0	\$0	\$0	\$0	\$0
Detailed Business Case	\$0	\$0	\$0	\$0	\$0	\$0
Pre Implementation	\$935,385	\$862,273	\$966,585	\$104,312	\$862,273	\$966,585
MSGA	\$502,353	\$143,011	\$74,788	(\$68,223)	\$153,012	\$140,280
Implementation	\$5,115,666	\$1,831,019	\$429,455	(\$1,401,564)	\$4,731,019	\$3,889,455
No Expenditure Type Specified	\$0	\$0	\$0	\$0	\$0	\$0
<b>Total</b>	<b>\$7,616,404</b>	<b>\$2,836,303</b>	<b>\$1,470,828</b>	<b>(\$5,145,576)</b>	<b>\$5,746,304</b>	<b>\$4,999,319</b>

Variance = Actual to Date - Budget to Date; Estimate at Complete (EAC) = Actual to Date + Remaining Forecast  
To Date costs are based on the month and period of the specified To Reporting Date



---

## How do we make roads safe?

We use a combination of a proactive risk based approach (KiwiRAP) and historic crash data

Design targeted safety engineering treatments to help prevent these crashes mainly:

- side and median barriers,
- rumble strips,
- widened centrelines
- flexible road safety barriers,
- signs and road markings,
- shoulder widening
- speed management
- Use of technology (electronic signage)





---

# Alliance Leadership Team (ALT)



**Tony Fisher - Alliance Director**

**Key responsibilities:** Strategic leadership and management of the Safe Roads Alliance, and high level interface with the Transport Agency.



**Catherine Morrison - Communication and Engagement Lead**

**Key responsibilities:** Stakeholder engagement, building/sustaining a culture of collaboration, trust and confidence with our communities, Alliance identity, strategy, branding and communications.



**Peter Sharp - Commercial Lead**

**Key responsibilities:** Cost control, budgeting, and financial management and reporting. Coordination of ICT, audit and business process improvements.



**Rachael Bryant - People and Culture Lead**

**Key responsibilities:** Building a people and culture platform that enables the Alliance to attract, develop and retain great people, facilitate relationships with the home organisations, and implement strategies that support a positive culture in the Alliance.



**Tony Keyte - Delivery Lead**

**Key responsibilities:** Management of delivery team with overall coordination of regional resources, management of design and construction procurement.



**David van Staden - Programme Management Office Lead**

**Key responsibilities:** Overall programme management, new project pipe line, performance monitoring of progress, cost and scheduling, and forward programme outlook. To seek and secure additional safety focussed work (parallel to core) for NZTA



**Richard Parsons - Project Controls Manager**

**Key responsibilities:** KRA-KPI framework, associated systems and reporting.



**Peter Burgess - Regional Delivery Manager  
Regional Coordinator**

**Key responsibilities:** Co-ordination of regional delivery managers and associated programme outputs for Auckland, Central, Southern regions.

---

# Programme Alliance Board (PAB)



**Brent Meekan- Programme Alliance Board Chair**  
Beca Business Director, Civil Infrastructure



**John Olliver – BBO**  
Managing Director/Planning Manager



**Tommy Parker – NZTA**  
Group Manager Highways & Network Operations

**Steve Gibson, Northern Civil Construction**



**Chris Young – NZTA**  
National Manager Network Directions and Performance



**Tony Fisher, Alliance Director**



**Bruce Richards – NZTA**  
Road Safety Manager



**Scott Bready, BBO**  
Director (and PAB alternate)



**Stuart Tucker – Beca**  
General Manager, Infrastructure



0:00 / 0:28





0:00 / 0:28

