

# Vision HERO

Transport Design for Our Times

Duncan Campbell  
**TRAFFESSIONALS**  
TRAFFIC ENGINEERING PROFESSIONALS



# Vision HERO



Vision HERO = Innovative

Vision HERO = Putting into Practice

Vision HERO = Best Value

# Vision HERO - Innovation

**TRAFFESIONALS**  
TRAFFIC ENGINEERING PROFESSIONALS



# Vision HERO - Best Value



Singapore, population 6 Million



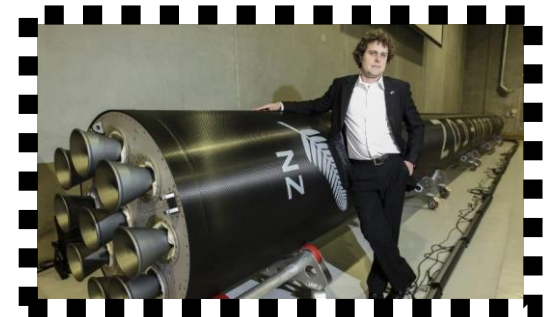
# Vision HERO



Vision HERO = Innovative

Vision HERO = Putting into Practice

Vision HERO = Best Value





# Vision HERO is NOT

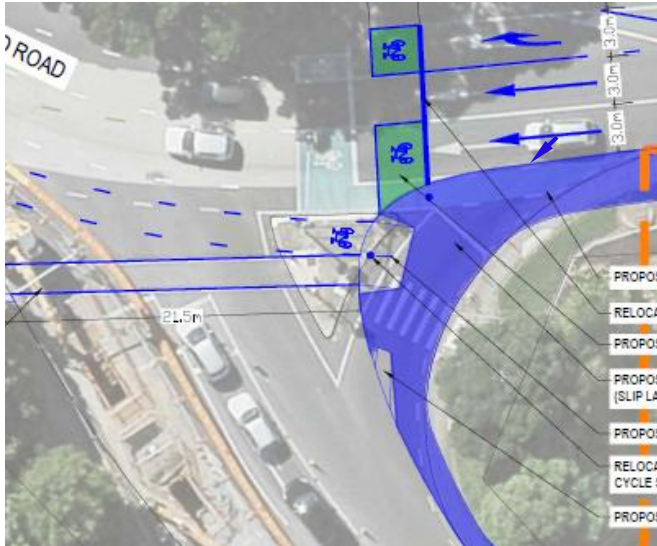


**Most Expensive Options**  
Waterview Tunnel, Auckland



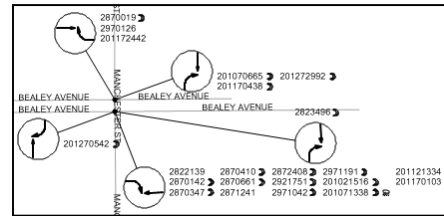
**One-off Solutions**  
Hemo Road Roundabout, Rotorua

# Vision HERO is NOT



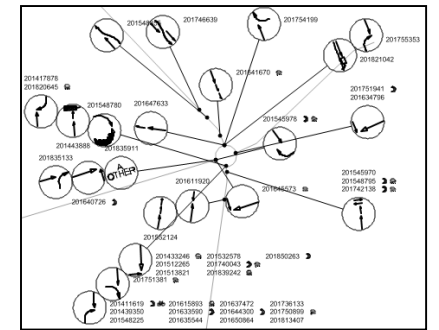
## Dubious Benefits

Removing Left-turn Slip-lanes



## Dubious Compromises

Filter Turns at Any Cost



## Cheap & Nasty

Coronation Road Roundabout, Auckland



# Vision HERO IS

**TRAFFSSIONALS**  
TRAFFIC ENGINEERING PROFESSIONALS



## Mini-Roundabouts

Innovative **YES**

Putting Into Practice **YES**

Best Value **YES**







# Vision HERO IS

**TRAFFICTIONALS**  
TRAFFIC ENGINEERING PROFESSIONALS



## Wire Rope Barriers

Innovative **YES**

Putting Into Practice **YES**

Best Value **YES**



# Vision HERO IS

**TRAFFSSIONALS**  
TRAFFIC ENGINEERING PROFESSIONALS



## Dynamic Traffic Lanes

(Whangaparaoa, Auckland 2018)

Innovative **YES**

Putting Into Practice **YES**

Best Value **YES**





# Vision HERO IS

## AMBER



Prepare to stop. Give way rules apply at roundabout.

## RED

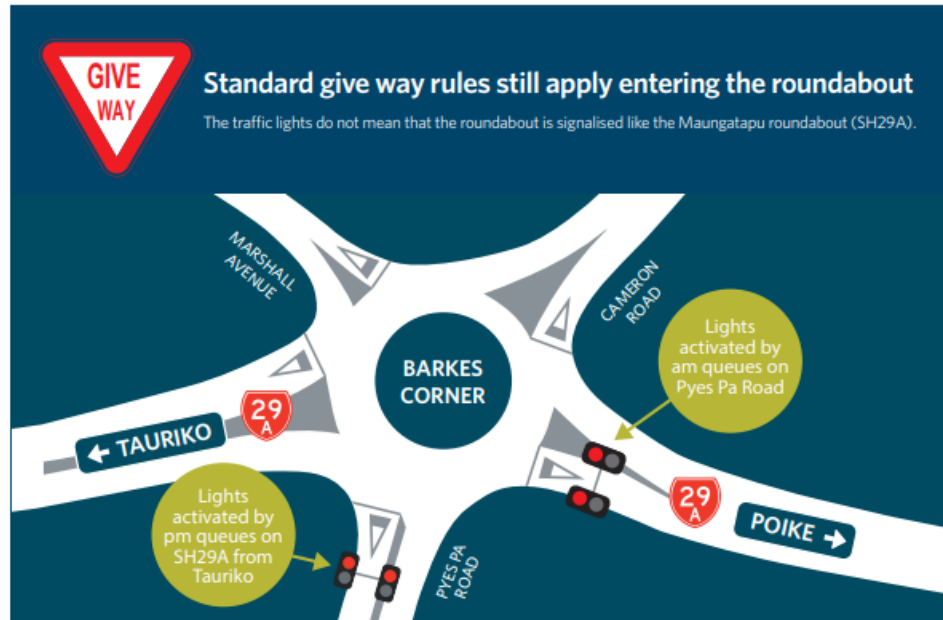


Stop until red light turns off.

## NO LIGHTS



Proceed to roundabout. Give way rules apply.



## Meter Signals

(Barkes Corner Roundabout, Tauranga 2018)

Innovative **YES**

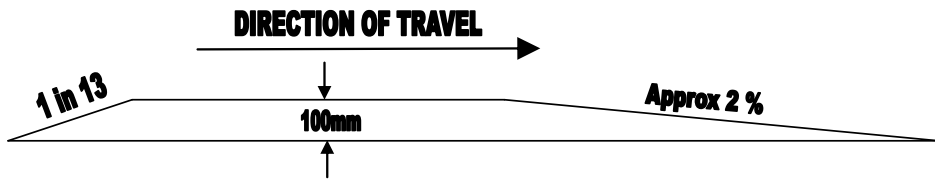
Putting Into Practice **YES**

Best Value **YES**





# Vision HERO IS



## Vertical Deflection Devices

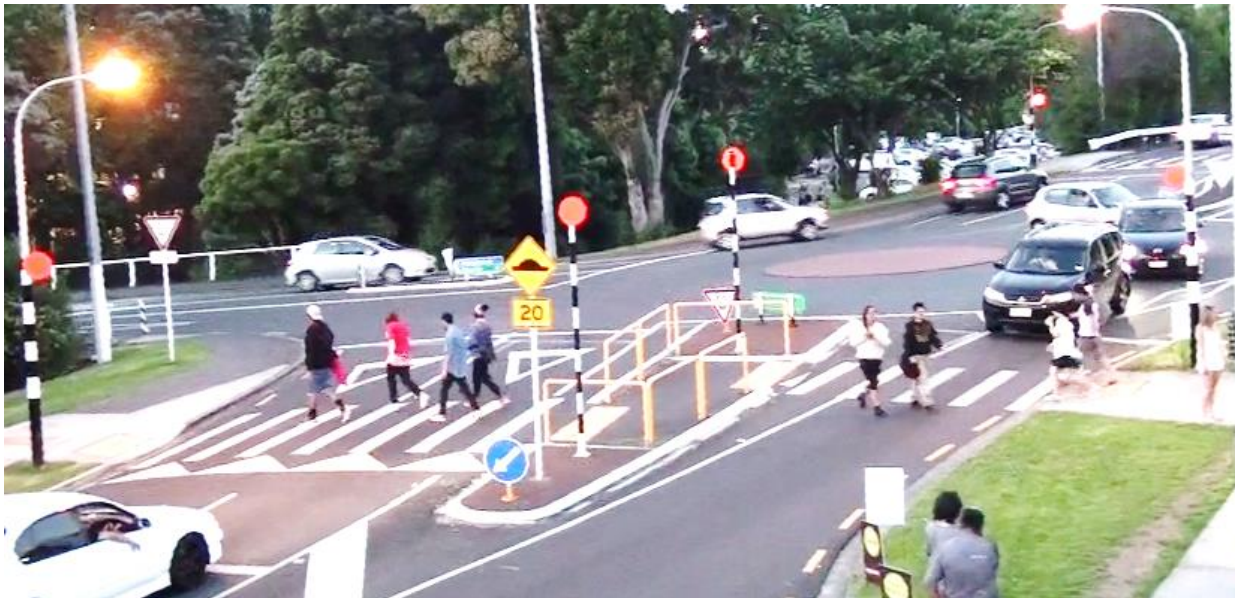
Innovative **YES**

Putting Into Practice **YES**

Best Value **YES**



# Vision HERO IS



## Compact Urban Roundabouts

Innovative **YES**

Putting Into Practice **YES**

Best Value **YES**



# Vision HERO IS

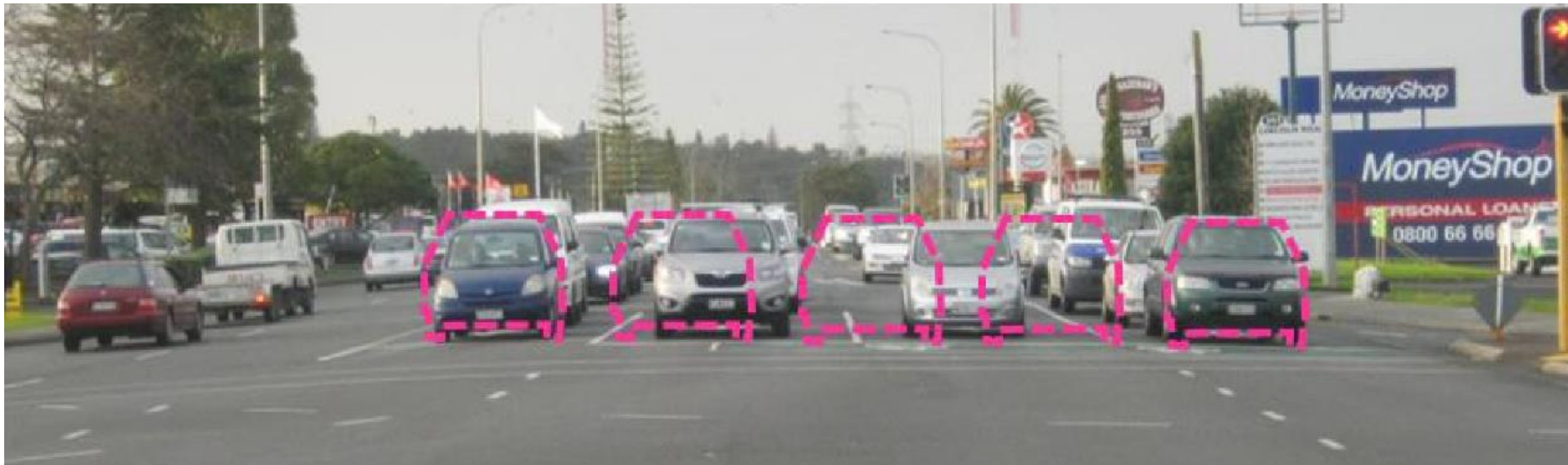
**TRAFFSSIONALS**  
TRAFFIC ENGINEERING PROFESSIONALS

## Narrow Lanes at Signalised Intersections

Innovative **YES**

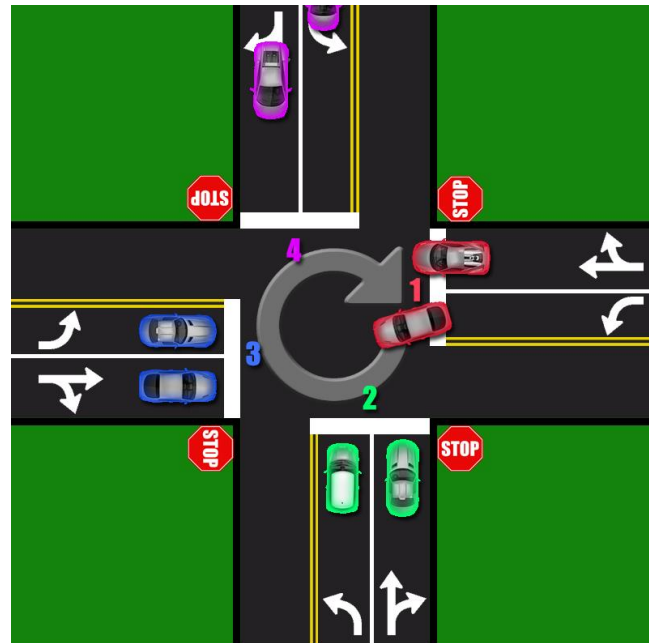
Putting Into Practice **NOT YET**

Best Value **MAYBE**





# Vision HERO IS



## 4 Way Stop / All way stop

1. Those who arrive first go first
2. All front cars from ONE direction of traffic proceed at the same time
3. Order proceeds CLOCKWISE

Thanks for reading! Drive safe!

## 4-Way Stops

Innovative **YES**

Putting Into Practice **NOT YET** in NZ

Best Value **YES**





# Vision HERO IS

**TRAFFSSIONALS**  
TRAFFIC ENGINEERING PROFESSIONALS

## Flashing Signal Displays (UK)

Innovative **YES**

Putting Into Practice **NOT YET** in NZ

Best Value **YES**



# Vision HERO IS

## Flashing Signal Displays (US)

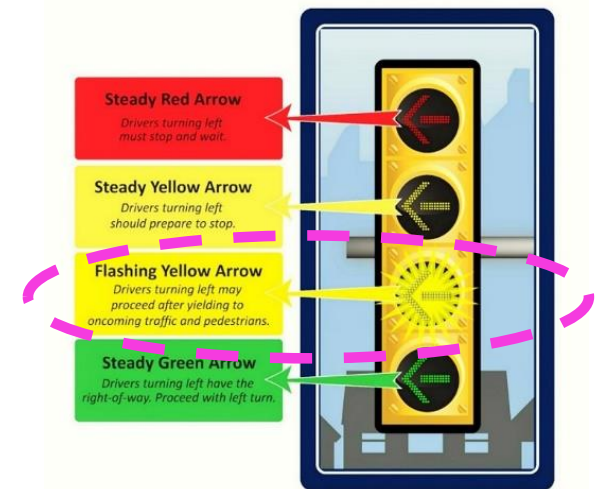
Innovative **YES**

Putting Into Practice **NOT YET** in NZ

Best Value **YES**



Proceed with **CAUTION**  
(Flashing yellow. Signal has been activated)



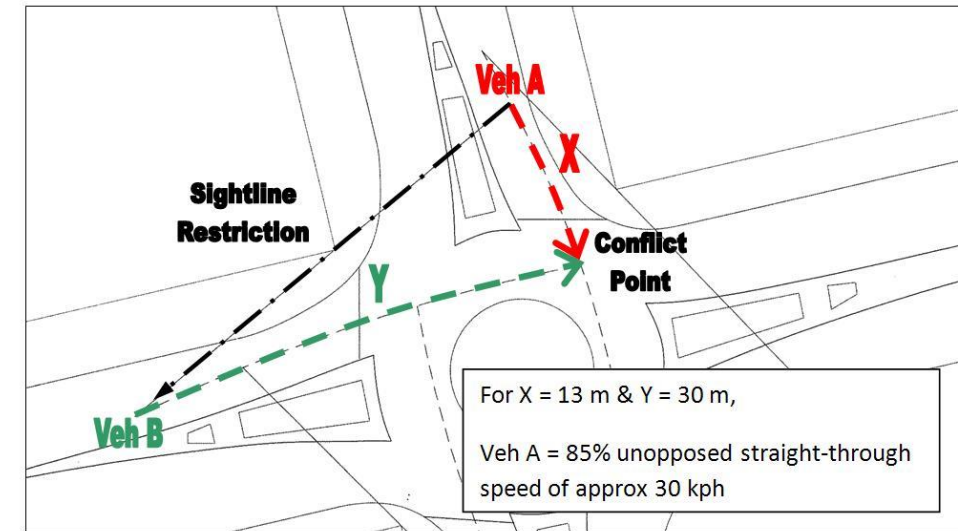
# Vision HERO IS

## Sightline Restrictions at Intersections

Innovative **YES**

Putting Into Practice **NOT YET**

Best Value **YES**



# Vision HERO... or business as usual?

## **Henry Ford:**

*“If I had asked people what they wanted, they would have said faster horses”*

## **Albert Einstein:**

*“The definition of insanity is doing the same thing over and over again, but expecting different results”*



# Transport Research Laboratory UK (TRL)

**TRAFFESIONALS**  
TRAFFIC ENGINEERING PROFESSIONALS



# Thankyou

Duncan Campbell  
**TRAFFSSIONALS**

**TRAFFIC ENGINEERING PROFESSIONALS**

**Ph: 07 281 7714**

**Email: [Duncan@Traffessionals.com](mailto:Duncan@Traffessionals.com)**

