

Accommodating Growth on Urban Transport Networks

**abley
steer**

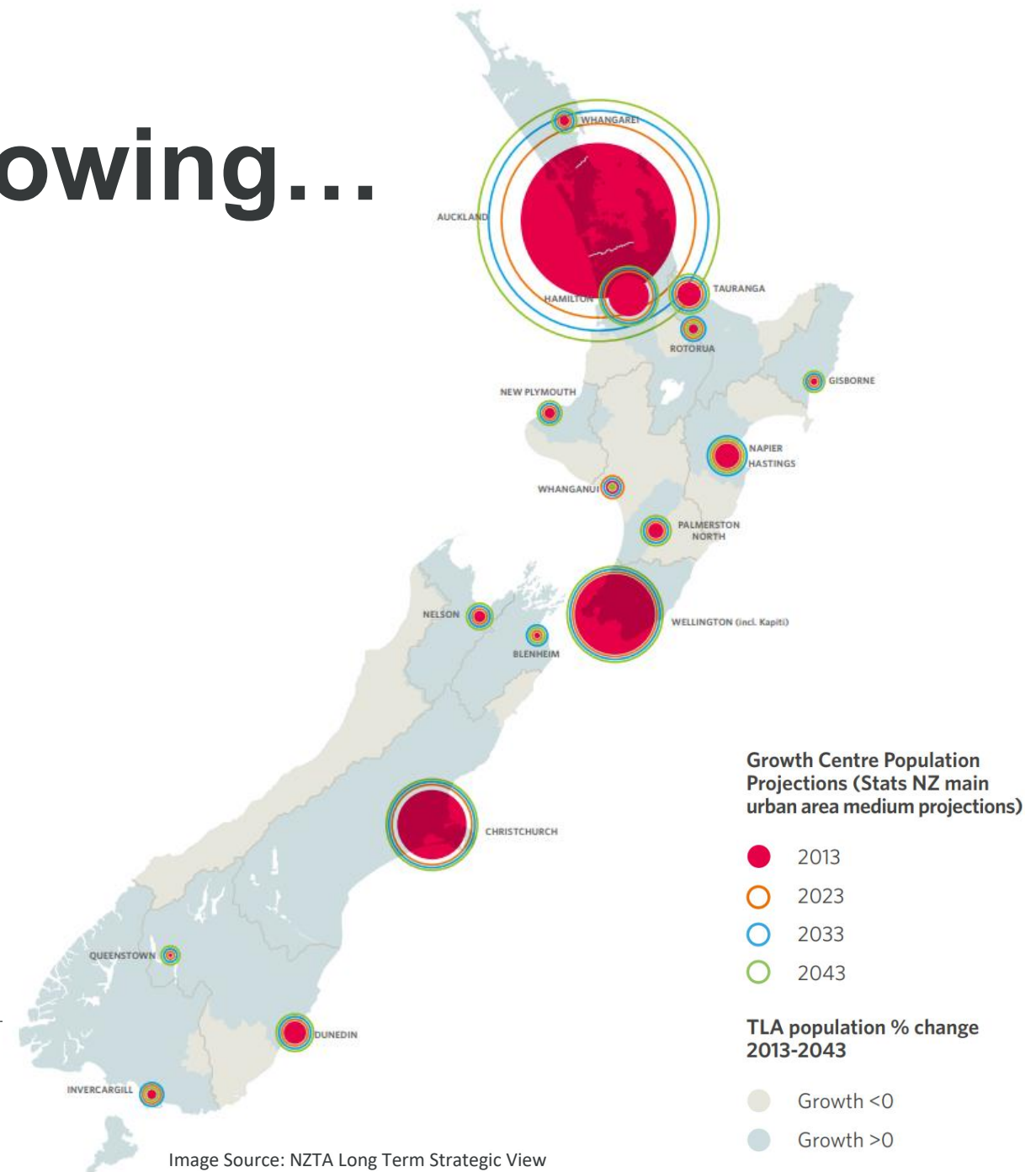


Courtney.Groundwater@abley.com

**Insightful solutions.
Empowering advice.**

Urban areas are growing...

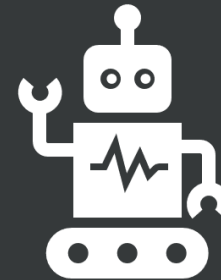
- New Zealand's population will reach **5.9mil by 2043**
- Majority in **main urban centres**



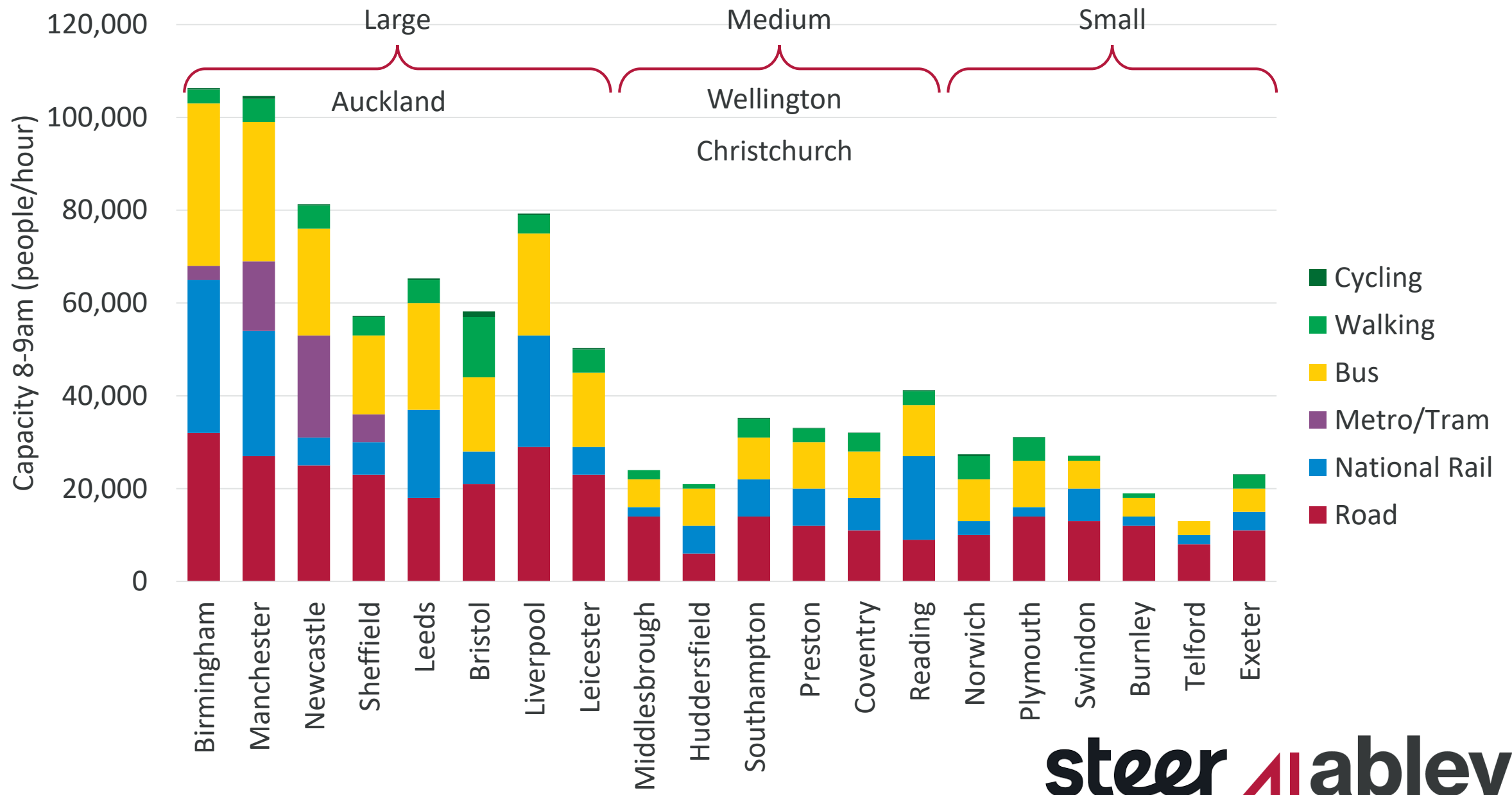
...and our networks need to adapt



1. What is the **current capacity**?
2. What could a capacity uplift **'look like'**?
3. How much would it **cost**?



Current Capacity	Look Like	Cost
------------------	-----------	------



Current Capacity

Look Like

Cost

5%



10%



20%



Current Capacity

Look Like

Cost



Bus

Kerb space, public perceptions, influencing power



Tram

Attractive, expensive, fixed route



Train

High capacity, very expensive, long distance



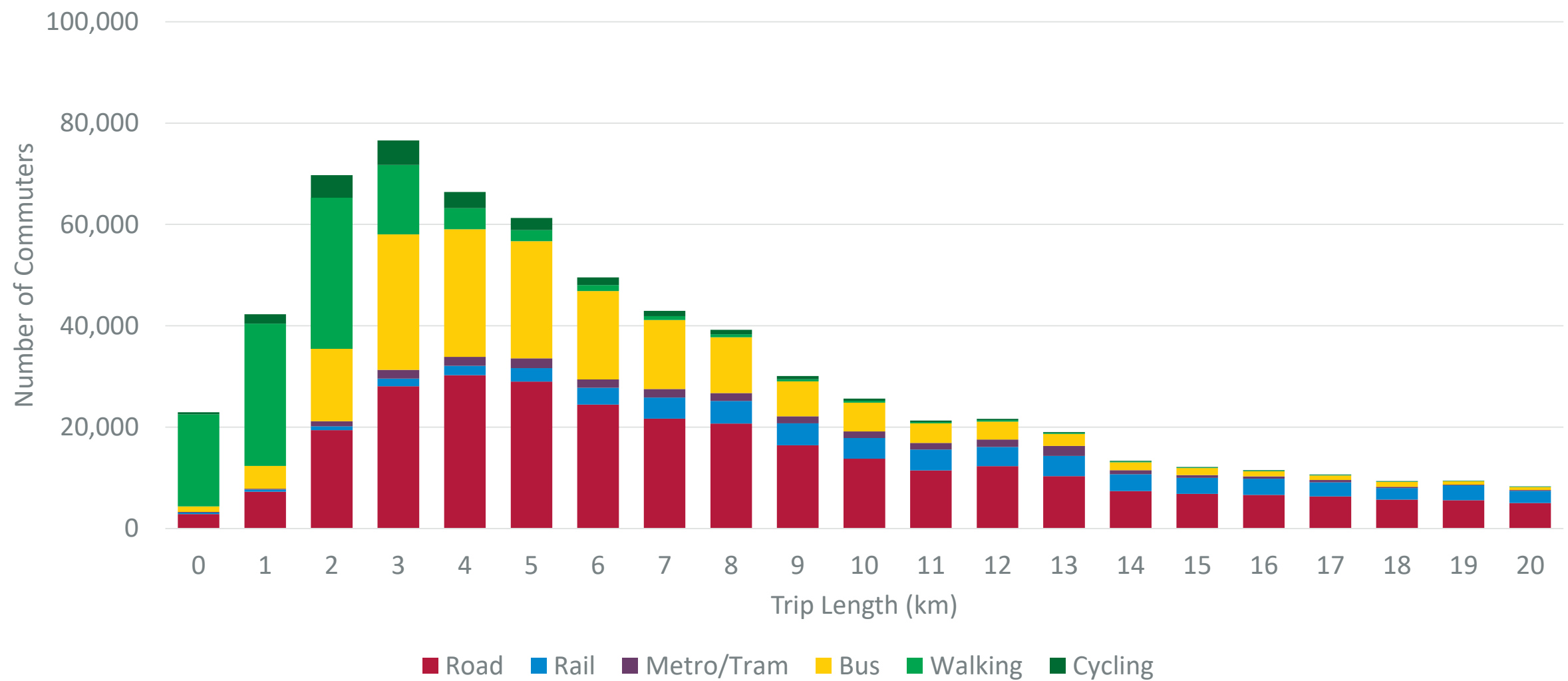
Car

Negative externalities, inefficient use of space

Current Capacity

Look Like

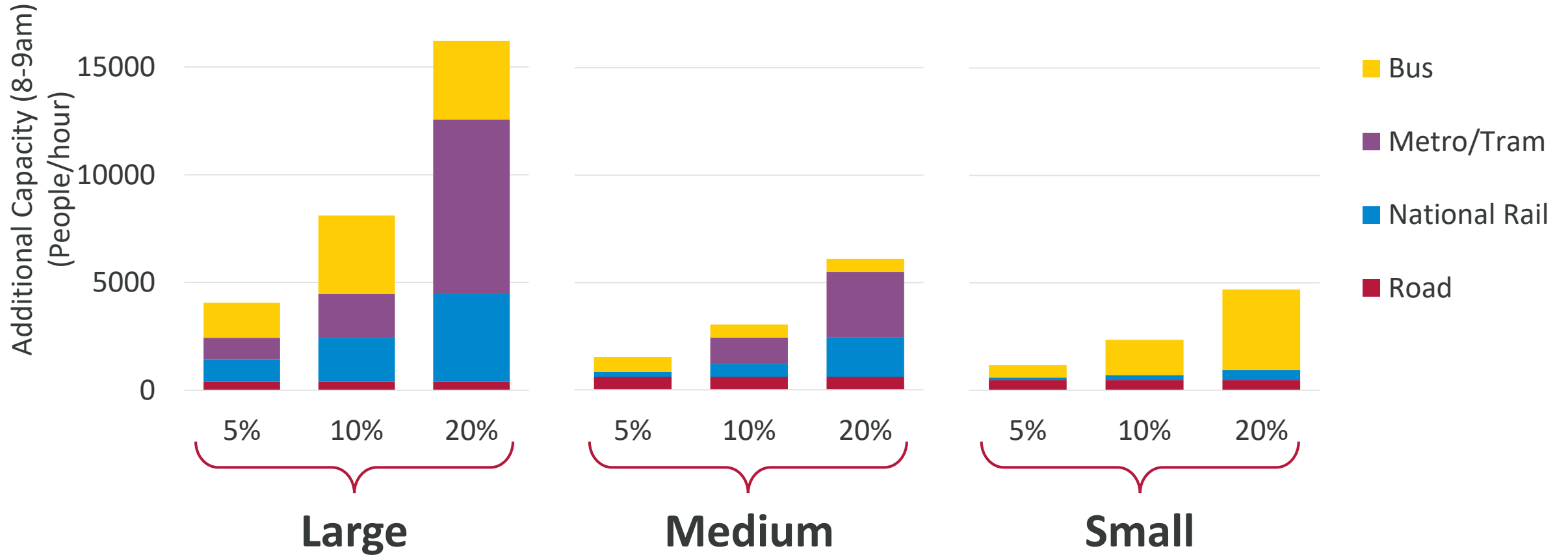
Cost



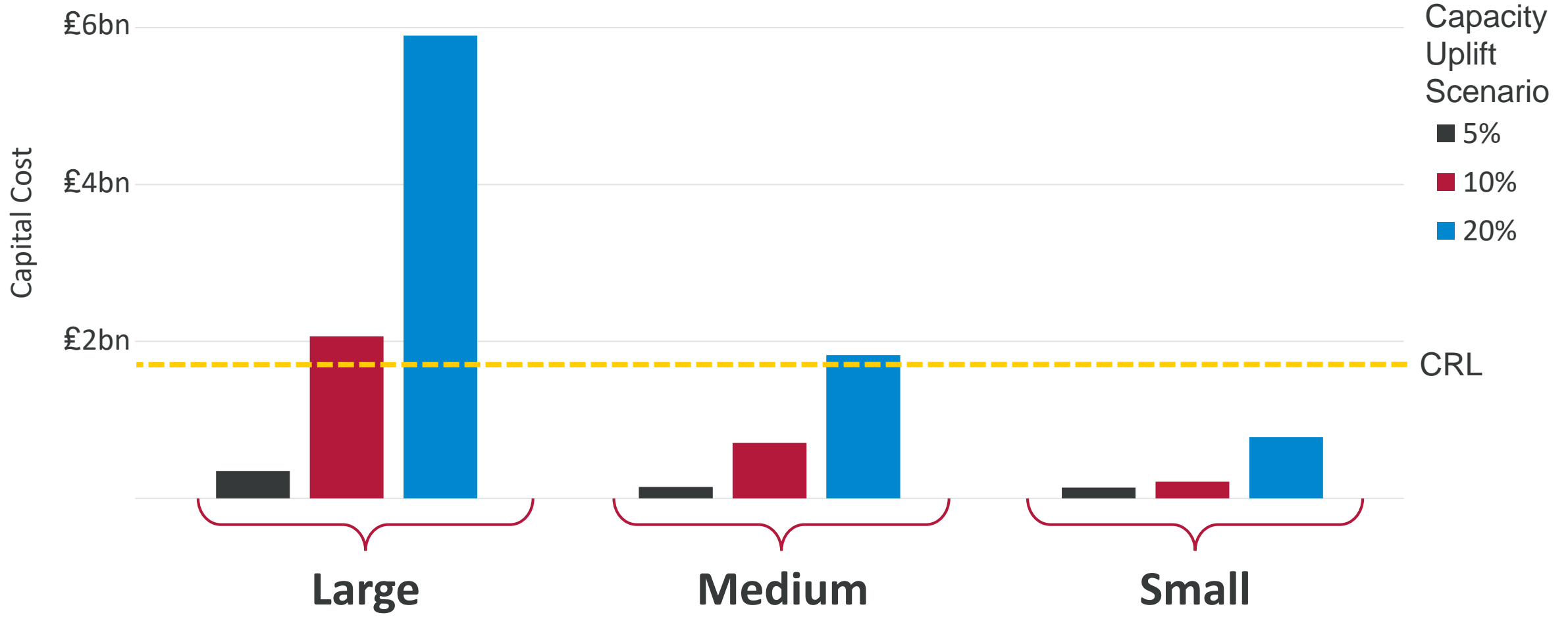
There is no silver bullet.

- Multi-modal approach required
- Different modes serve different markets
- Autonomous vehicles alone are unlikely to 'save the day'

Capacity Uplifts



Capital Costs



The UK National Infrastructure
Commission recommends additional
£43 billion investment in urban
transport by 2040

Thank You

Contact us:

Courtney Groundwater (Presenter)
courtney.groundwater@abley.com

Jake Cartmell
jake.cartmell@steergroup.com

Neil Chadwick
neil.chadwick@steergroup.com