

CYCLEWAY TACTILE PAVERS, WHAT IS BEST PRACTICE?

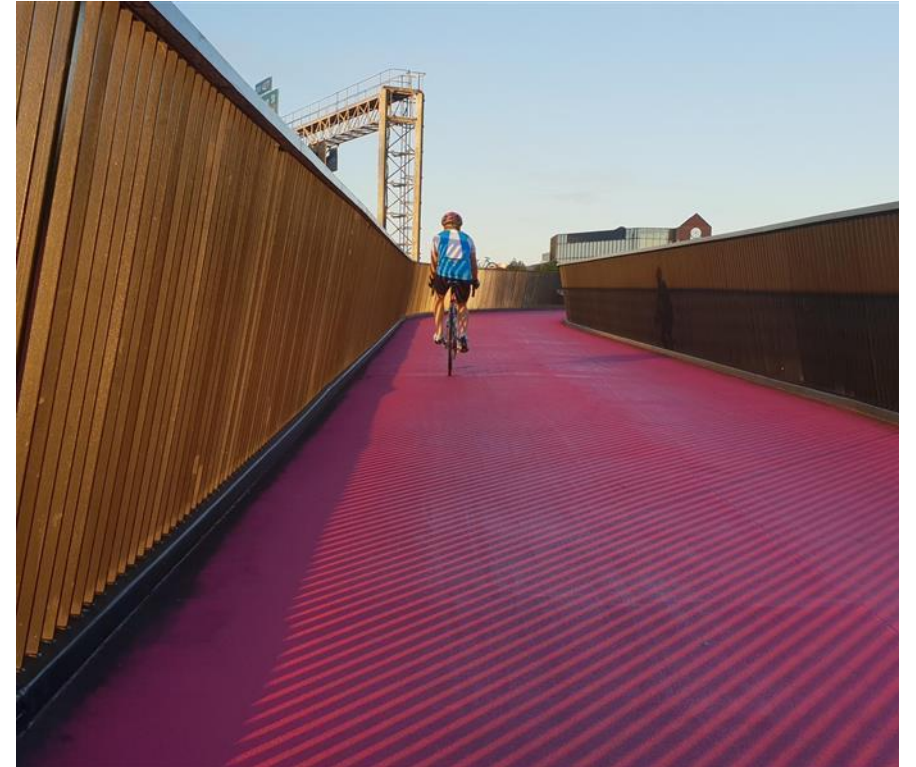


Matt Allan
12th March 2020

Insightful solutions.
Empowering advice.

Context

- Increased investment in cycling and pedestrian infrastructure
- Transport practitioners are increasingly required to design tactile paver implementations



Source: Courtney Groundwater

Blind and Low Vision Users

- Tactile Pavers give clear directional and warning messages to blind and vision-impaired pedestrians
- Approx. 175000 New Zealander's with vision loss in 2020

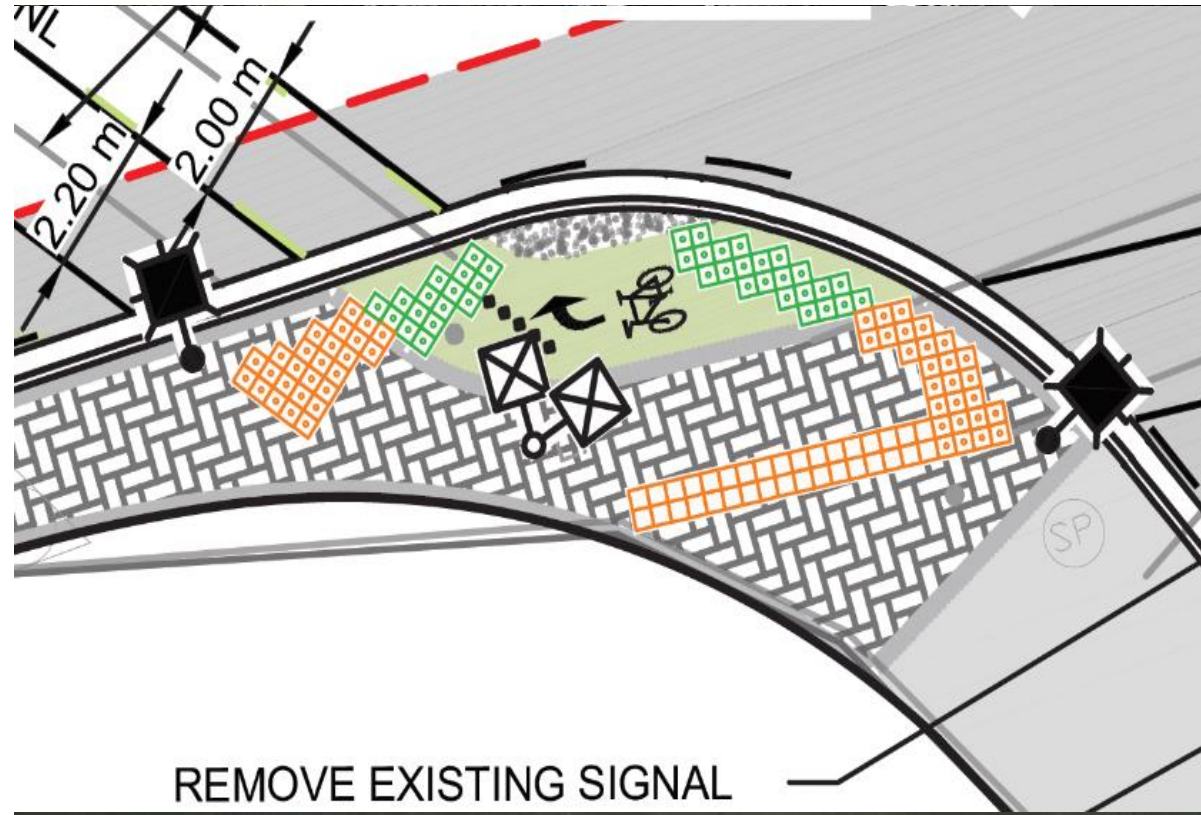


Source: NZTA

Interviews



Implementation Review



Source: Mitchell Cocking

Key Outcomes



Source: CCC

- Issues with tactile implementations at shared spaces/paths
- Gaps in the existing standards and guidelines
- Concerns with pedestrian safety on shared paths

Recommendations

- Updating RTS 14 guidance
- User perceptions of shared path environments and cycleway infrastructure.
- Explore the perceived and real safety issues with shared paths

RTS 14 – Guidelines for facilities for blind and vision impaired pedestrians

3rd Edition - May 2015

Road and Traffic Standard Series



Source: NZTA

Thank you!

Questions?

Contact

Matt Allan

Transportation Engineer

www.abley.com

Matt.Allan@Abley.com

+64 3 378 0028

