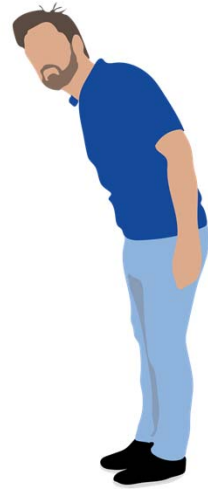




On the Way

the Human Dimension in Transportation

Kia Ora!

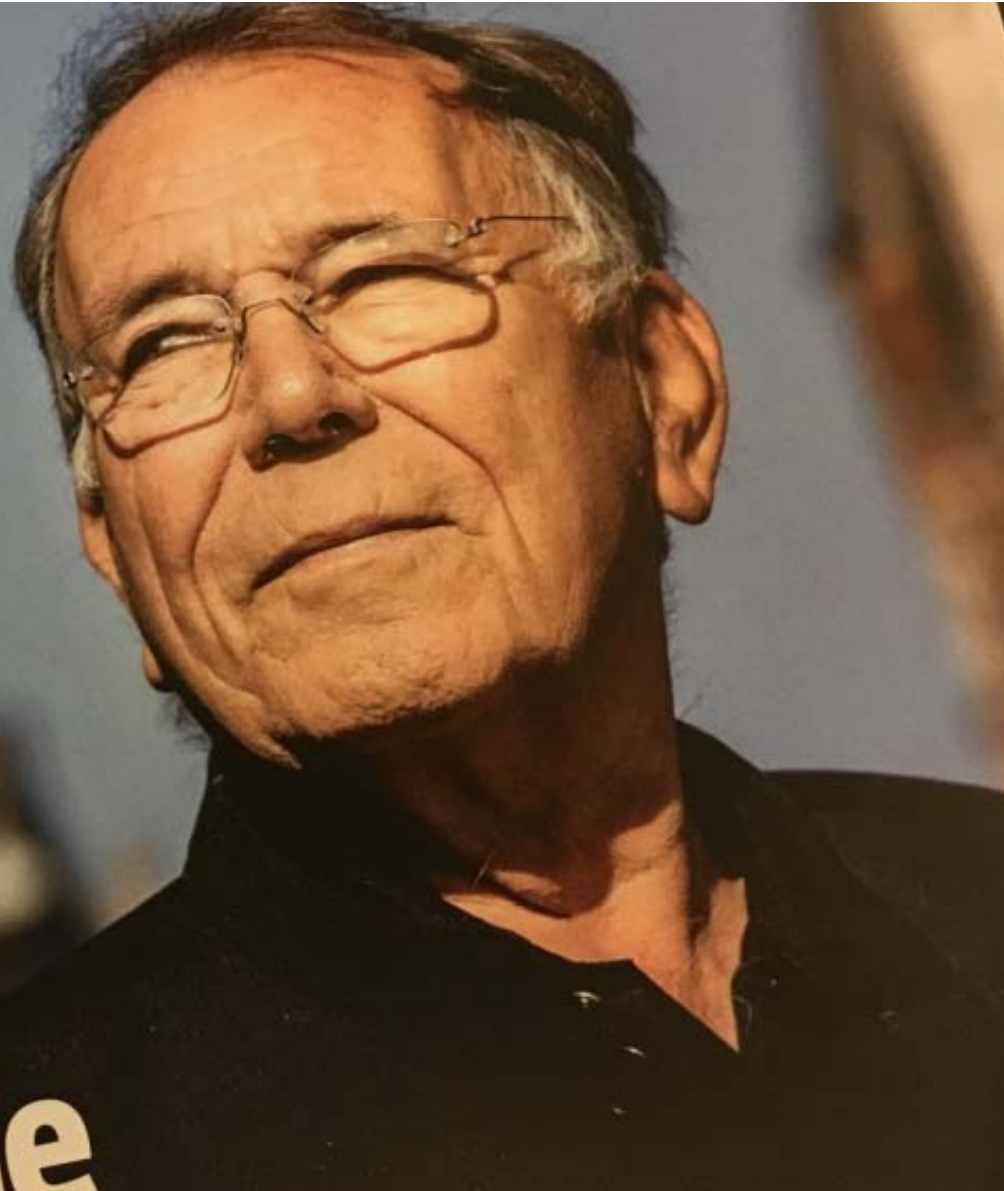


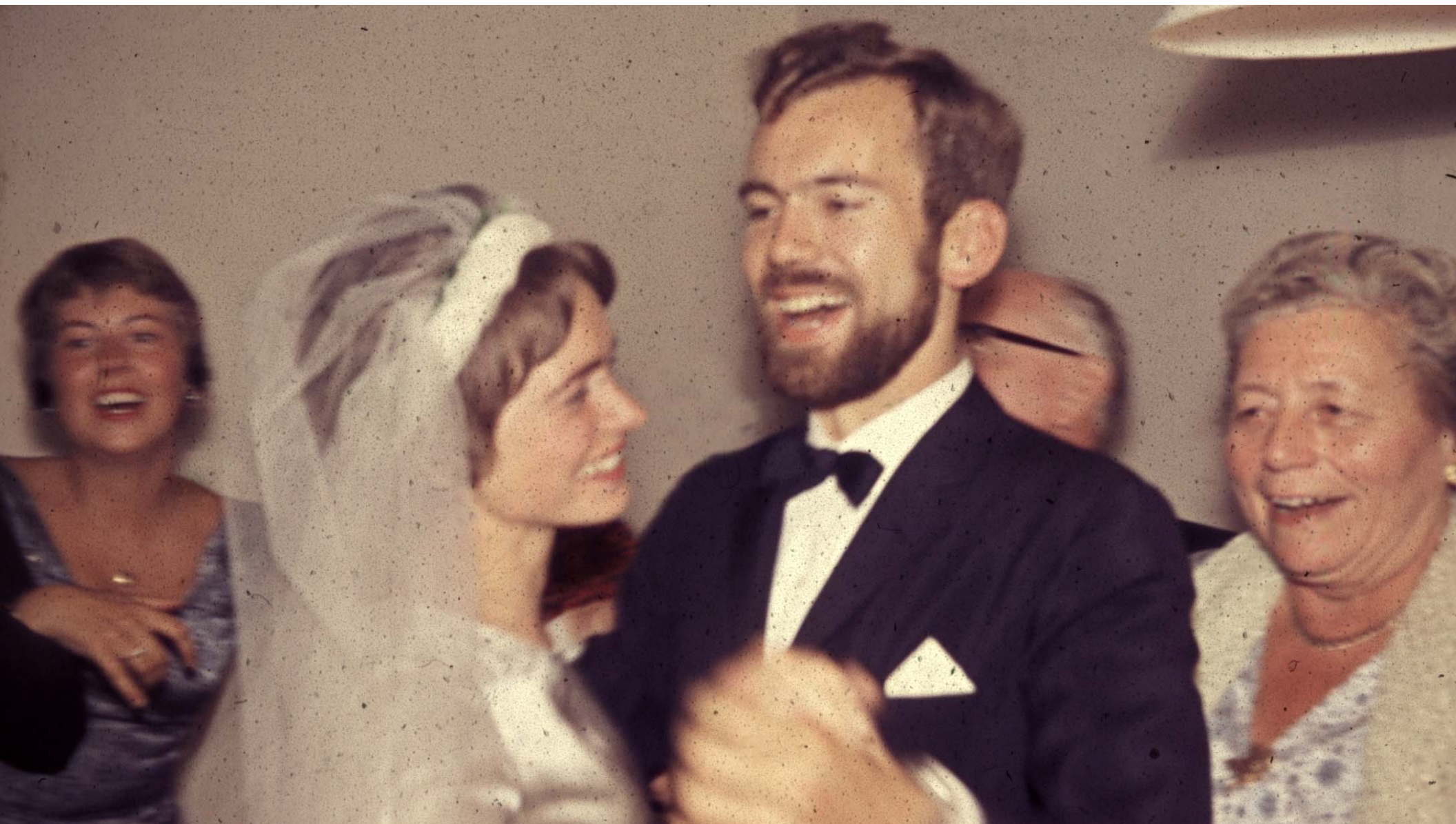


arkitektur & by

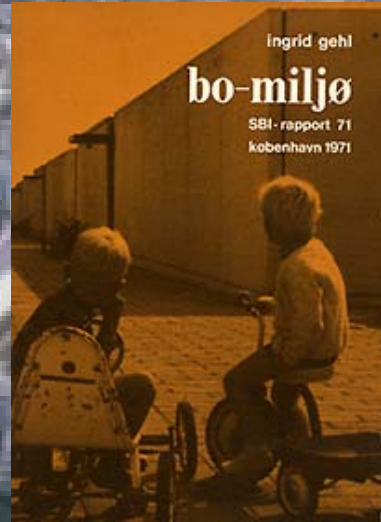
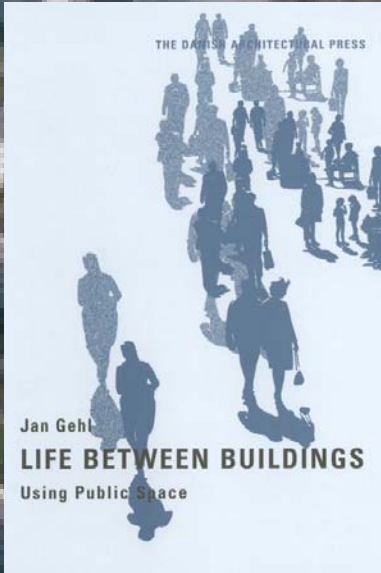
81-årige Jan Gehl er
arkitekturens Robin Hood

**Byen må
ikke blive
færdig**







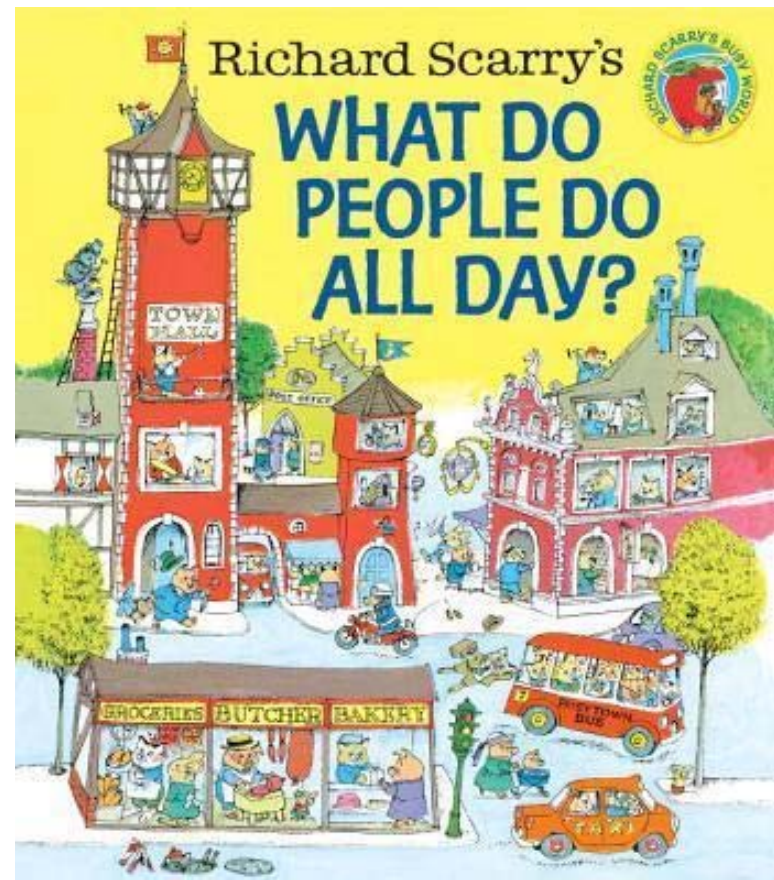
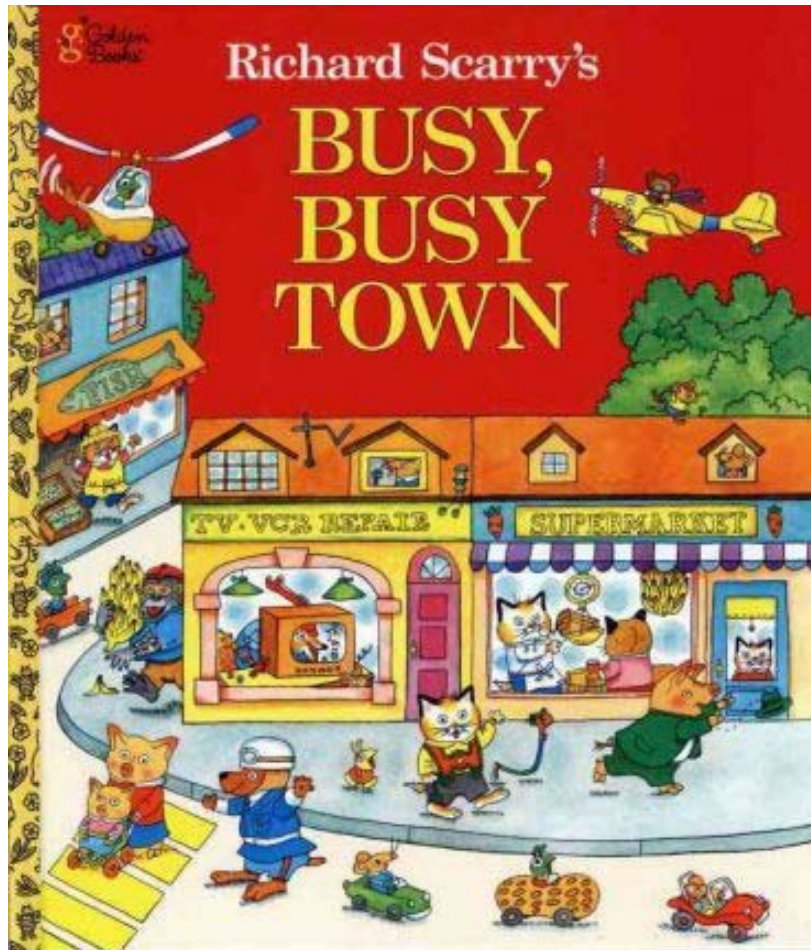




A blue-tinted photograph of a busy city street. In the foreground, there are several round tables and chairs, some occupied by people sitting at an outdoor cafe. The street is filled with pedestrians walking in various directions. In the background, there are multi-story buildings with various signs, including "Leaders", "THEATRE ROYA", and "Pinochio RISTORANTE ITALIANO PIZZERIA". The overall scene is a vibrant, active urban environment.

“It’s a city mum,
...it’ll never be
finished”

Gehl



Soft City

Building Density
for Everyday Life



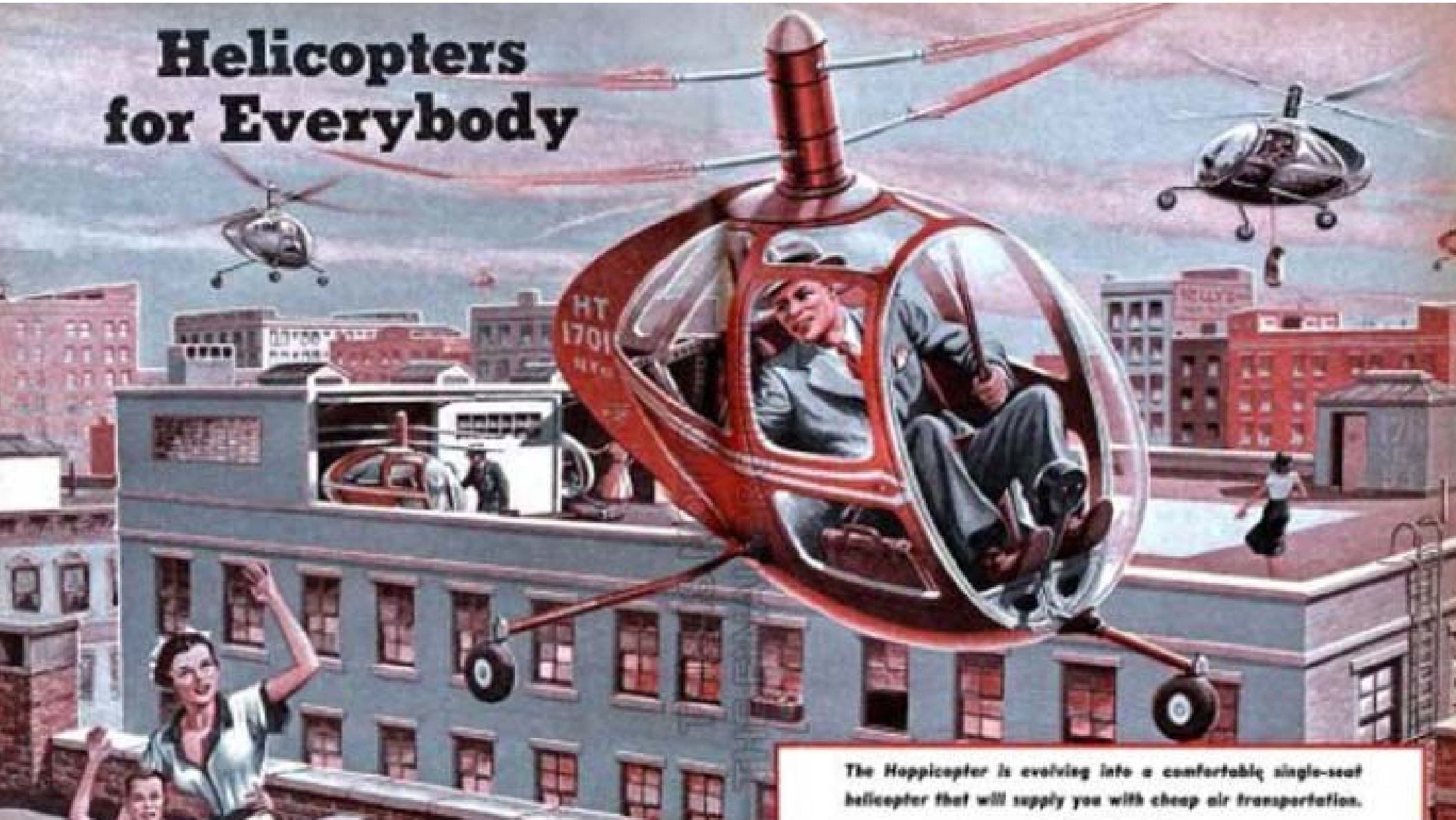


the everyday stuff





Helicopters for Everybody



The Hoppicopter is evolving into a comfortable single-seat helicopter that will supply you with cheap air transportation.



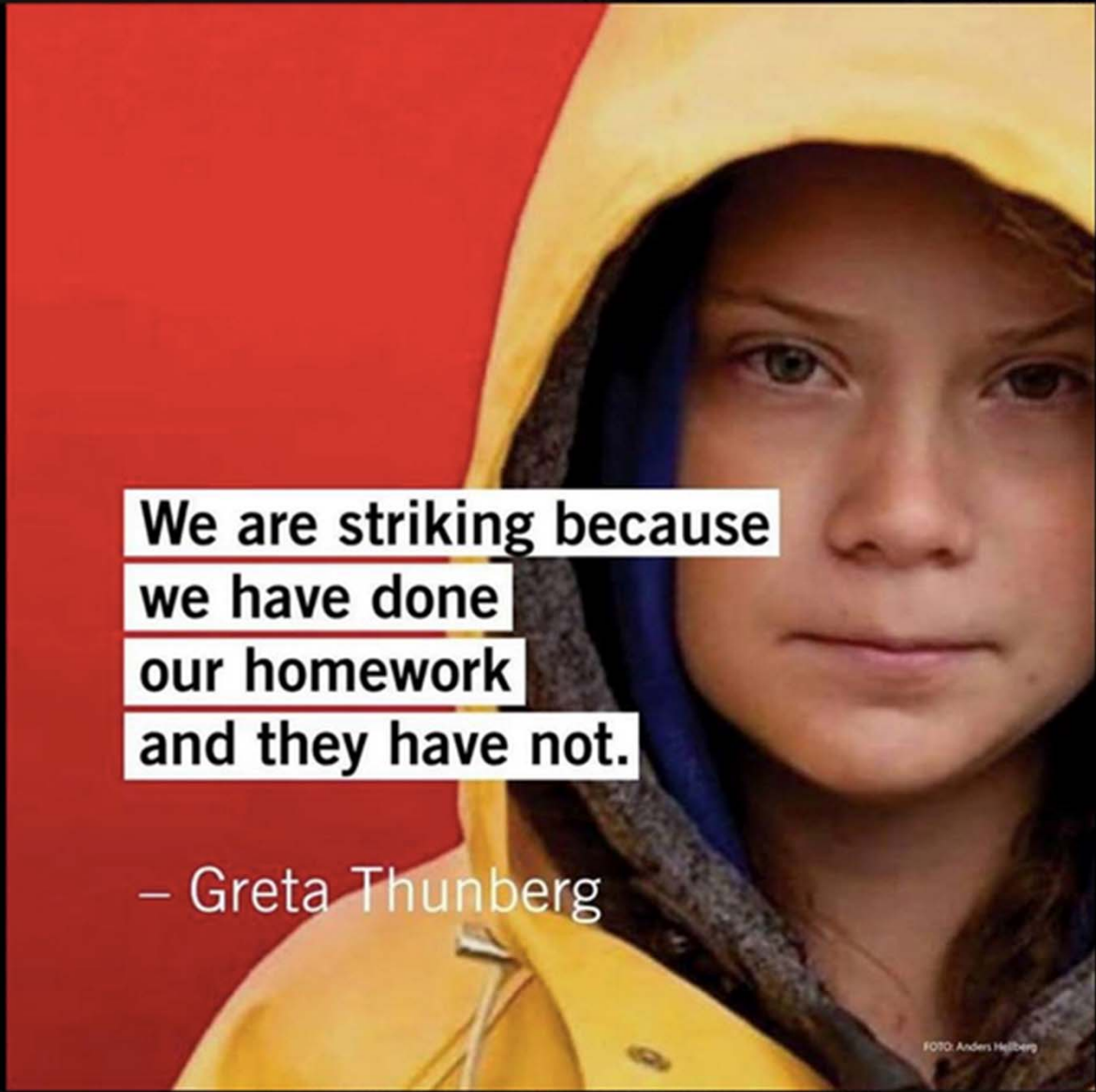




Walking home from school



Cute story, but...

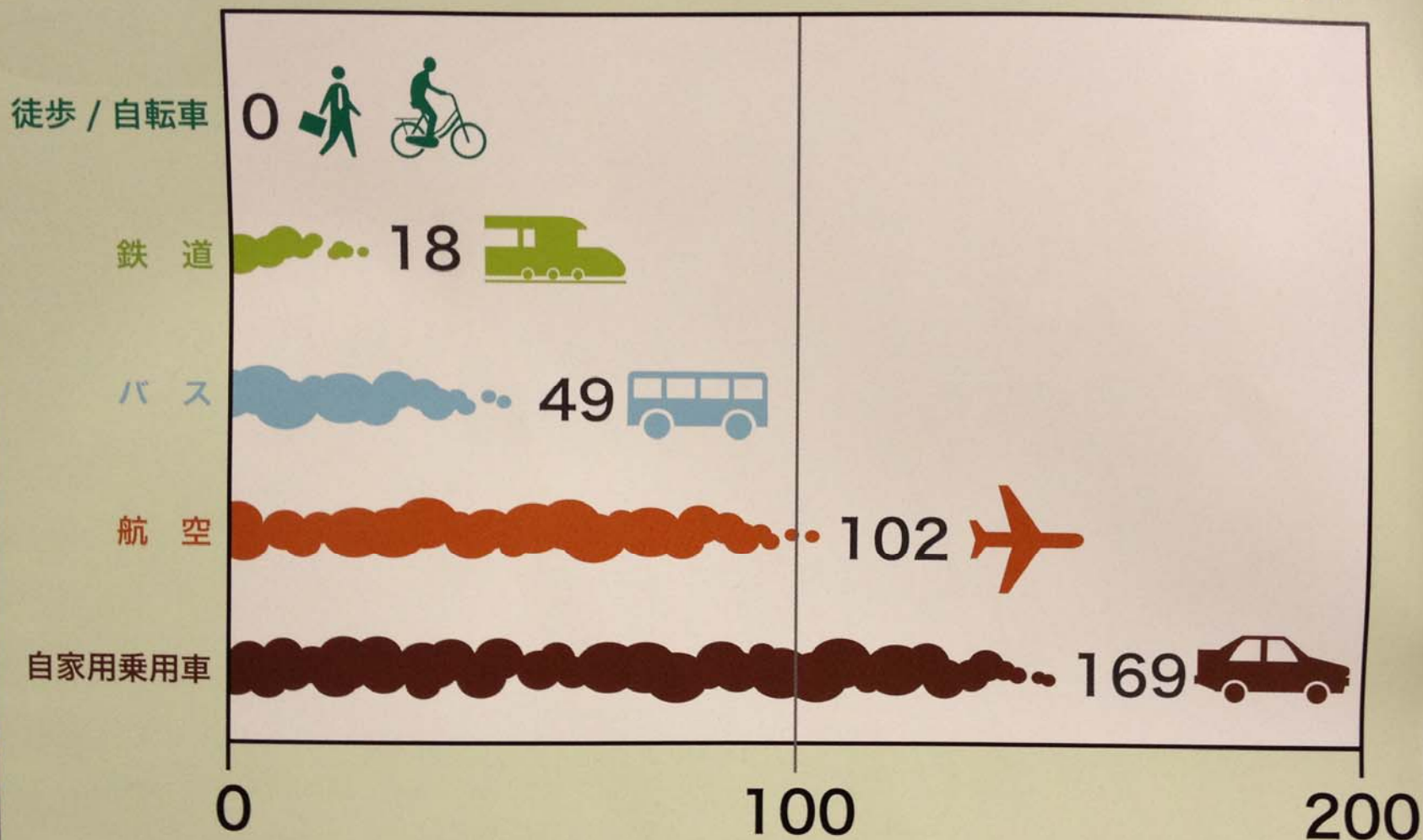


**We are striking because
we have done
our homework
and they have not.**

– Greta Thunberg

FOTO: Anders Hellberg

移動手段別のCO₂排出量比較



● 人が1kmあたり移動するときが発生するCO₂の比較グラフ (単位: g-CO₂/人キロ)

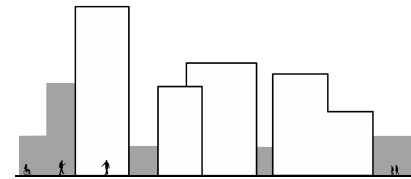
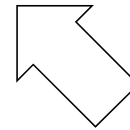
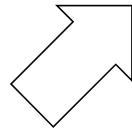
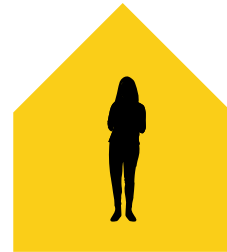
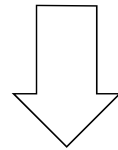


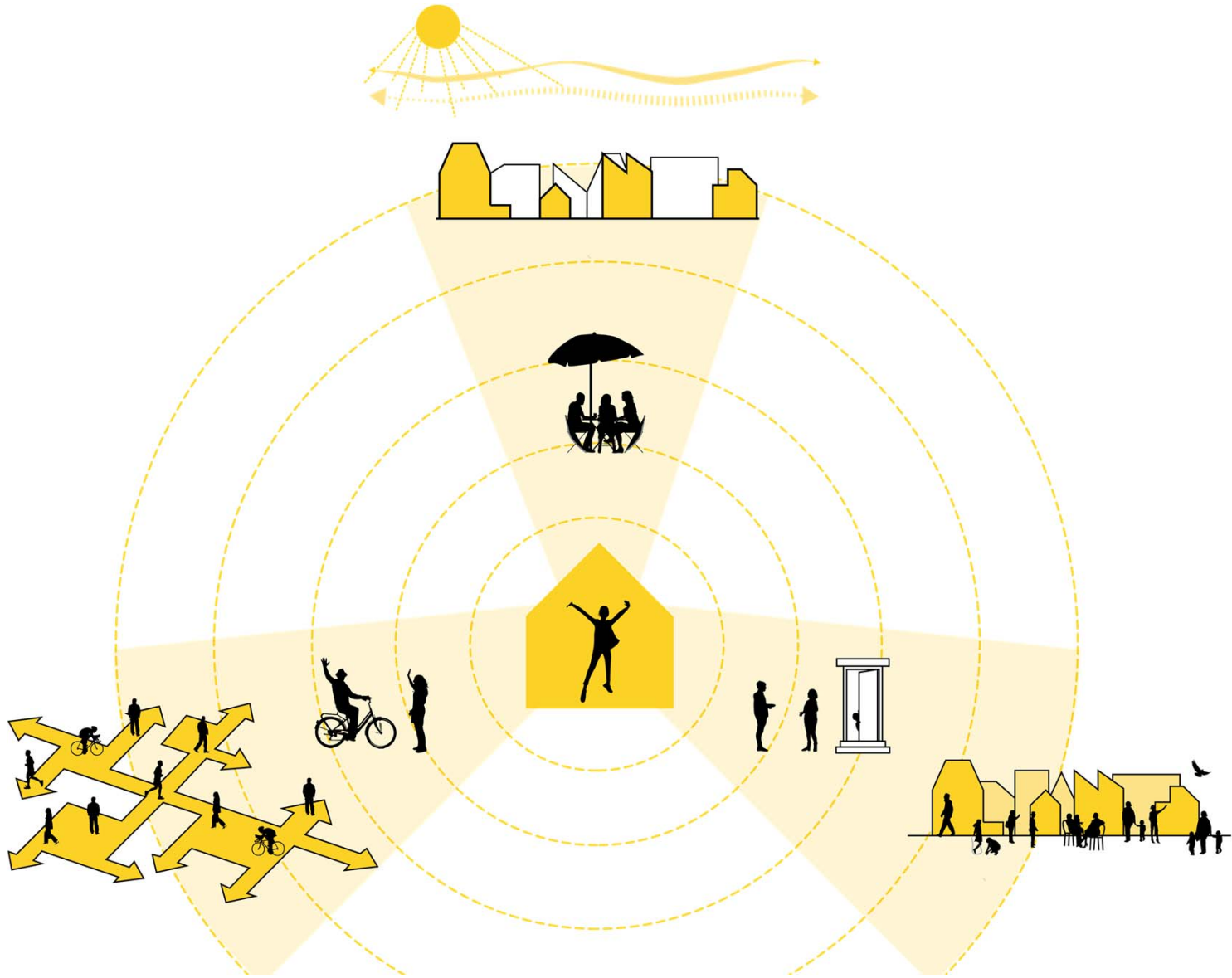
<http://www.surf.lu.se/urban-flooding/>













EN ESTE ESTABLECIMIENTO
NO SE DISCRIMINA POR MOTIVO
DE RAZA, RELIGIÓN, ORIENTACIÓN
SEXUAL, CONDICIÓN FÍSICA O
SOCIOECONÓMICA NI POR
NINGÚN OTRO MOTIVO.

No Fumar



People to Place

People to People

People to Planet





Copenhagen, Denmark

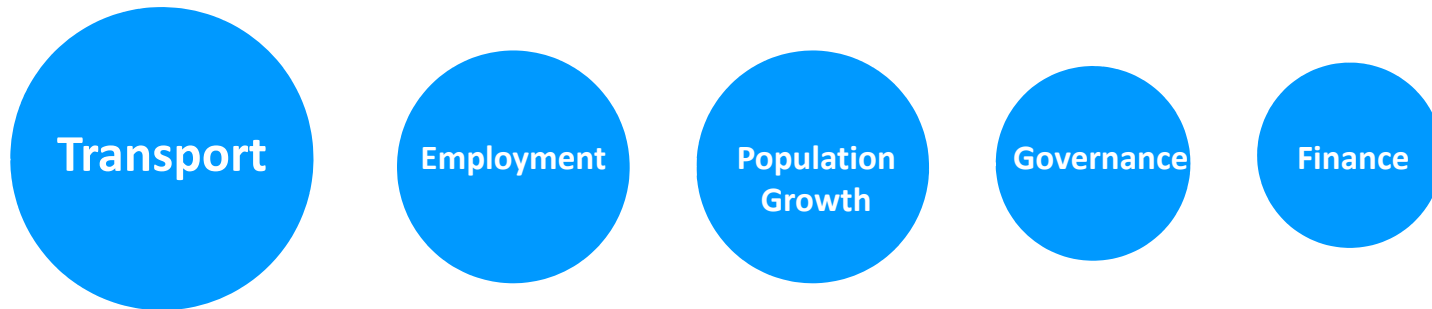


Encounters

Freiburg, Germany

Top 5 urban challenges*

The five most significant general challenges facing your city today



All of which share the same denominator:

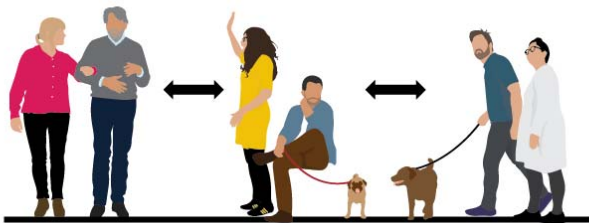
People

*Source; LSE Cities 'Going Green Report 2012'. Cities surveyed all over the world on what their top 3 challenges are.
<http://lsecities.net/files/2012/09/goinggreen.pdf>

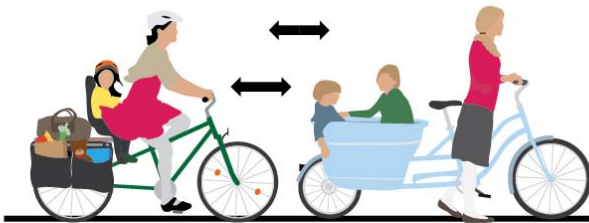


What about the Human Dimension in Transportation?

Gehl



Pedestrian to Pedestrian



Cyclist to Cyclist



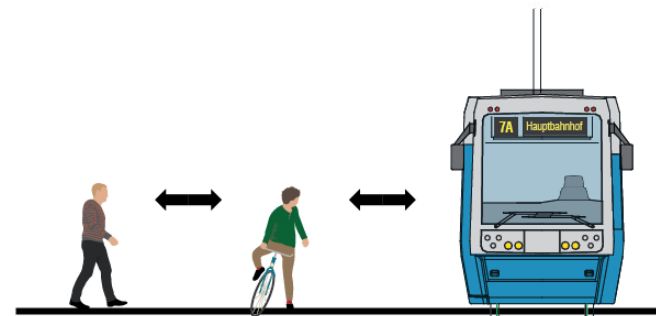
Vehicle to Vehicle / Driver to Driver



Vehicle to Vehicle / Driver to Driver



Pedestrian to Cyclist



Pedestrian to Cyclist to Tram





KØBMAND

Hej!

Hello!

1234-5678



Tokyo, Japan





Soller, Mallorca



Basel, Switzerland



Basel, Switzerland



Basel, Switzerland

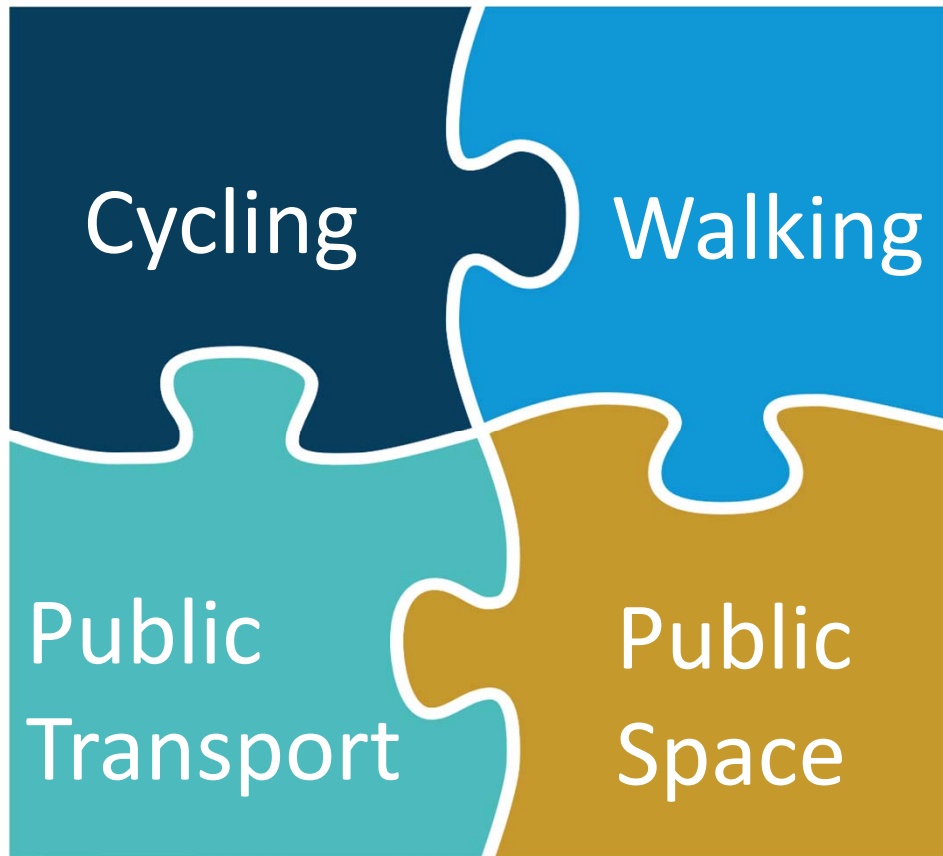


Seemlessness?

Gehl



Basel, Switzerland



The Grand Slam





A blue-tinted photograph of a busy city street. In the foreground, several people are seated at small round tables with wicker chairs, likely at an outdoor cafe. The street is filled with pedestrians walking in various directions. Buildings line the street, with signs for 'Leaders', 'THEATRE', and 'Pirochio RISTORANTE ITALIANO PIZZERIA' visible. The overall atmosphere is one of a vibrant, pedestrian-friendly urban environment.

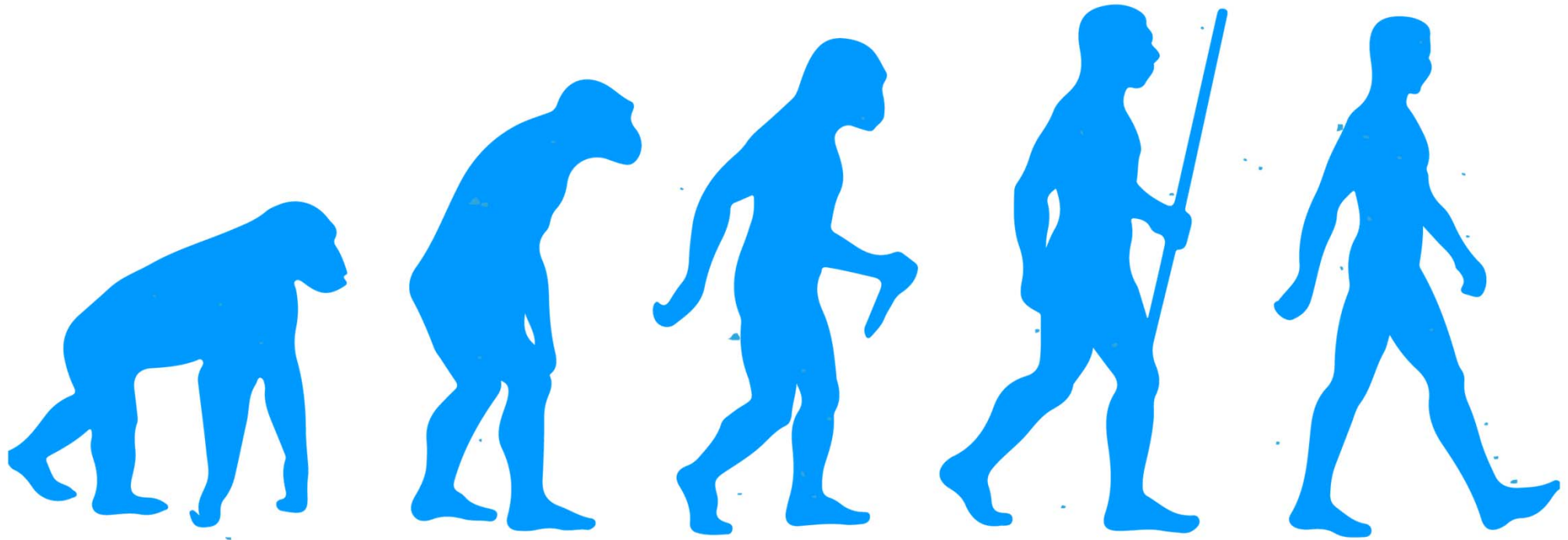
There's more to
walking than
just walking.....

Gehl



Being a Human Being

Gehl



Hunter Gatherers - The Walking Animal

The human is small,
slow, sensitive and
curious animal
with a speed of 5km/h



An invitation to walk?





An invitation to walk?



3,4 or 5 km/h



“Man is man’s greatest joy”

(Old Icelandic saying)

























2 people playing – 20 participating





Public Health

Gehl





Fresh Air

Exercise

Meet People

7 October 2013 Last updated at 00:00



Walking more 'would save thousands' of lives in the UK

COMMENTS (444)



Tens of thousands of lives could be saved each year in the UK if people got off the sofa and stretched their legs more, say charities.

The "Walking Works" report by the Ramblers and Macmillan Cancer Support said walking was a free activity which could transform people's health.

Being physically active decreases the odds of heart problems and stroke.

Related Stories

- Walking 'cuts breast cancer risk'
- Exercise 'can be as good as pills'
- Quarter of adults 'walk

Top Stories



SSE to raise energy prices by 8.2%

- Libyan PM 'freed from captivity' **NEW**
- Royal Mail sale: Small bids favoured
- Alzheimer's find is 'turning point'
- Taylor to serve jail term in UK **NEW**

Features



Liquid level

Do you really need to drink eight cups of water a day?



Anxious to own?

Figures show the story of the UK housing market



Leagues of nations

How the UK's world football map has changed



The Searchers

Film buffs hunt for a long-lost John Wayne film



4 October 2013 Last updated at 05:22



Walking 'cuts breast cancer risk'



Post-menopausal women who walk for an hour a day can cut their chance of breast cancer significantly, a study has suggested.

The report, which followed 73,000 women for 17 years, found walking for at least seven hours a week lowered the risk of the disease.

The American Cancer Society team said this was the first time reduced risk was specifically linked to walking.

UK experts said it was more evidence that lifestyle influenced cancer risk.

Top Stories



SSE to raise energy prices by 8.2%

Libyan PM 'freed from captivity' **NEW**

Royal Mail sale: Small bids favoured

Alzheimer's find is 'turning point'

Taylor to serve jail term in UK **NEW**

Features



Liquid level

Do you really need to drink eight cups of water a day?



Anxious to own?

Figures show the story of the UK housing market



Leagues of nations

How the UK's world football map has changed



The Searchers

Film buffs hunt for a long-lost John Wayne film

Related Stories

Quarter of adults 'walk hour a week'

Womb cancer link to diet and fitness

Inactivity 'as deadly as smoking'





Walking (and spending time outdoors) in Copenhagen and some other places

Gehl



øget" to day

Nyhavn - before



Nyhavn - beforeand after 1980

















Copenhagen, Denmark



Copenhagen, Denmark



Copenhagen, Denmark



Copenhagen, Denmark

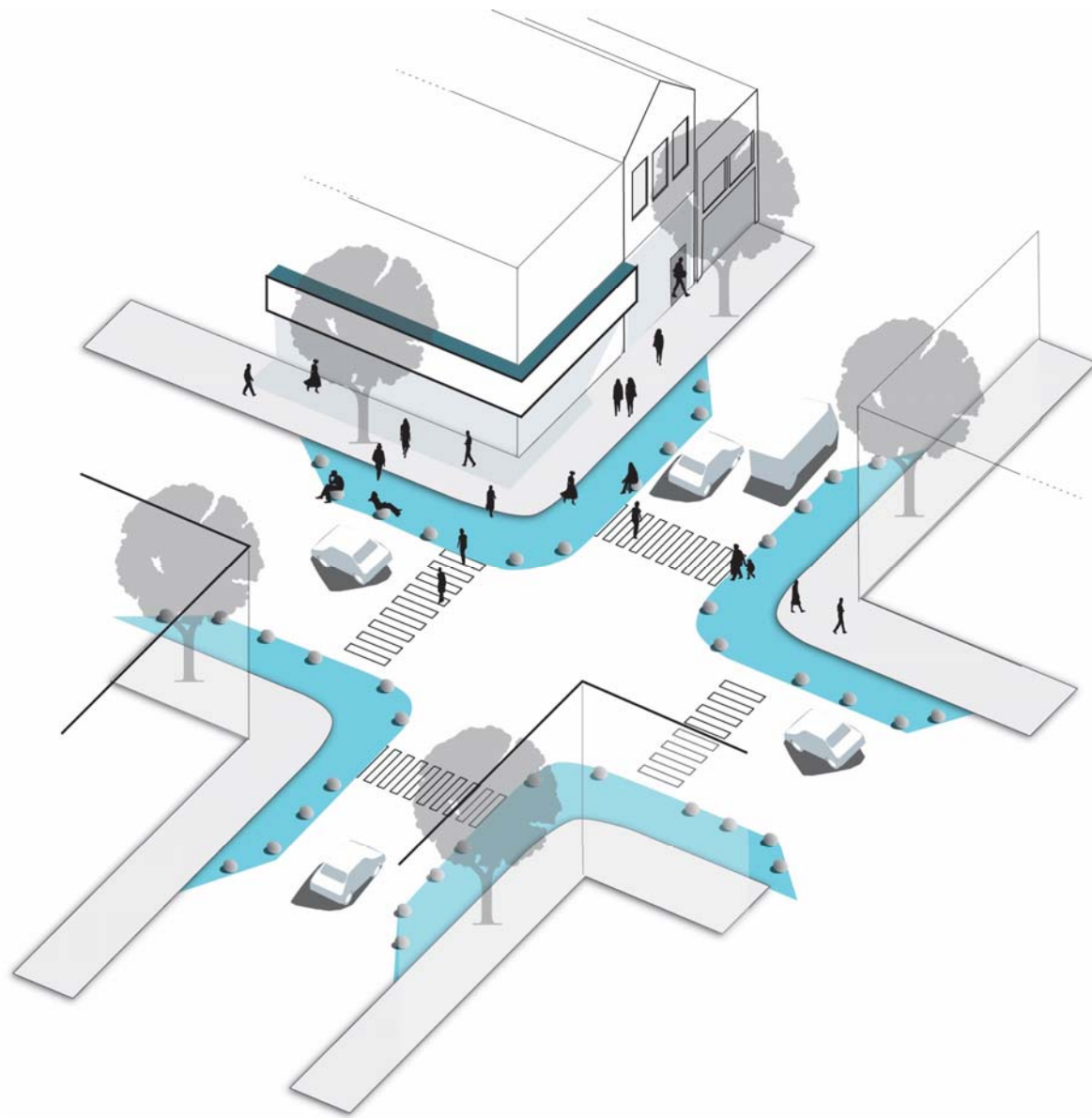


Copenhagen, Denmark



London, England







Lyon, France





Lyon, France



Buenos Aires, Argentina



Buenos Aires, Argentina



Buenos Aires, Argentina

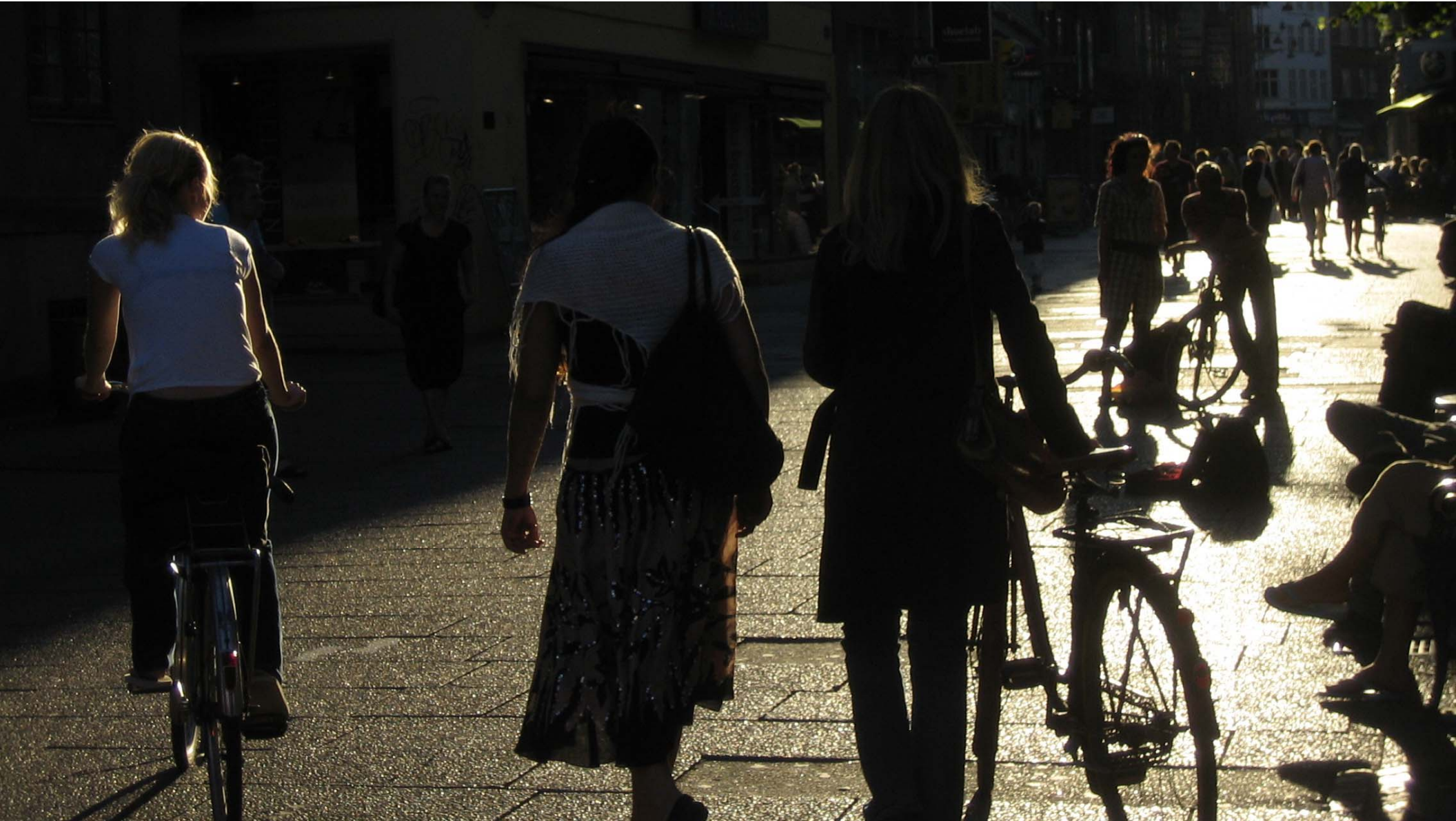


Mar del Plata, Argentina



Cycling

Walking



A city full of bicyclists is a friendly city – a people city





Tokyo, Japan



Berlin, Germany



Tokyo, Japan

A blue-tinted photograph of a busy city street, likely in Copenhagen, showing pedestrians and cyclists. The street is lined with multi-story buildings, some with signs like 'Leaders', 'Pavillon Theatre', 'Theatroya', and 'Pirochio'. People are walking and sitting at outdoor cafe tables. The overall scene is vibrant and active.

Cycling in Copenhagen and some other places

Gehl

A transport system throughout the city

18. JUL 11
16:19

HEJ CYKLIST!
Du er nummer
4734
I DAG

og nummer
2179099
I ÅR
der cykler forbi her

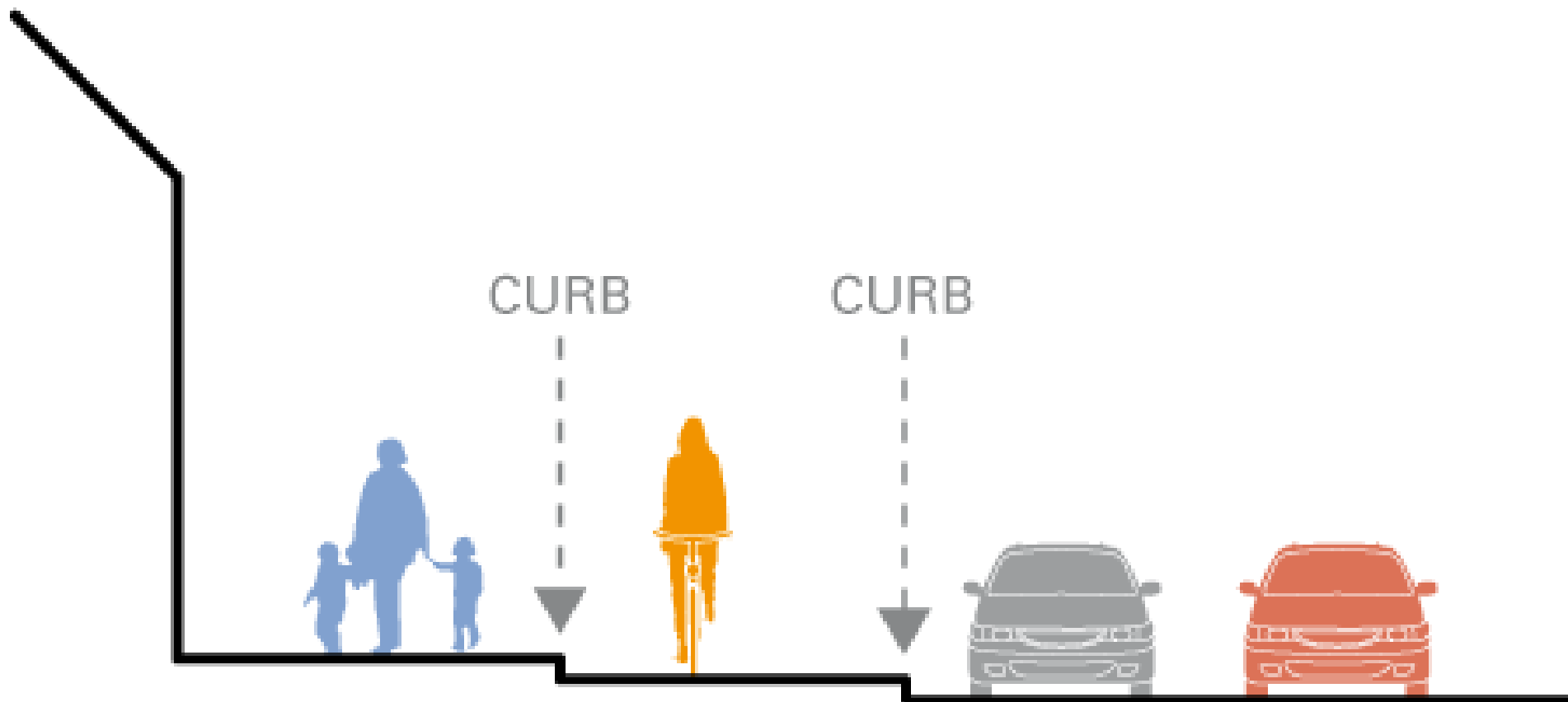
GOD TUR
og tak fordi du cykler i byen!

I  CPH

On this cycle track the City of Copenhagen counts the number of cyclists who have passed by today in this and since the beginning of the year (11:4)



- for everyone



SIDEWALK

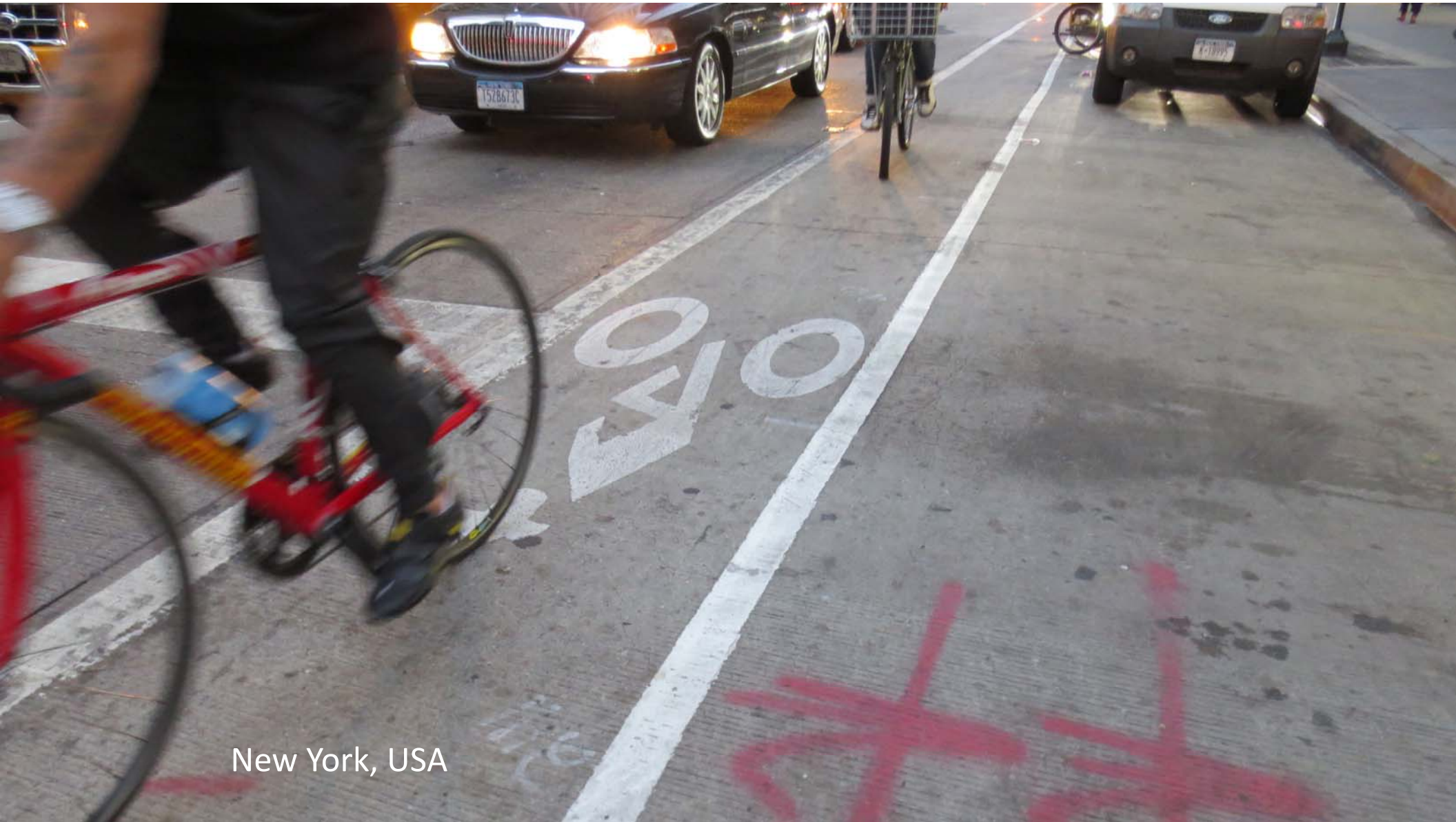
BICYCLE
TRACK

PARKED
CARS

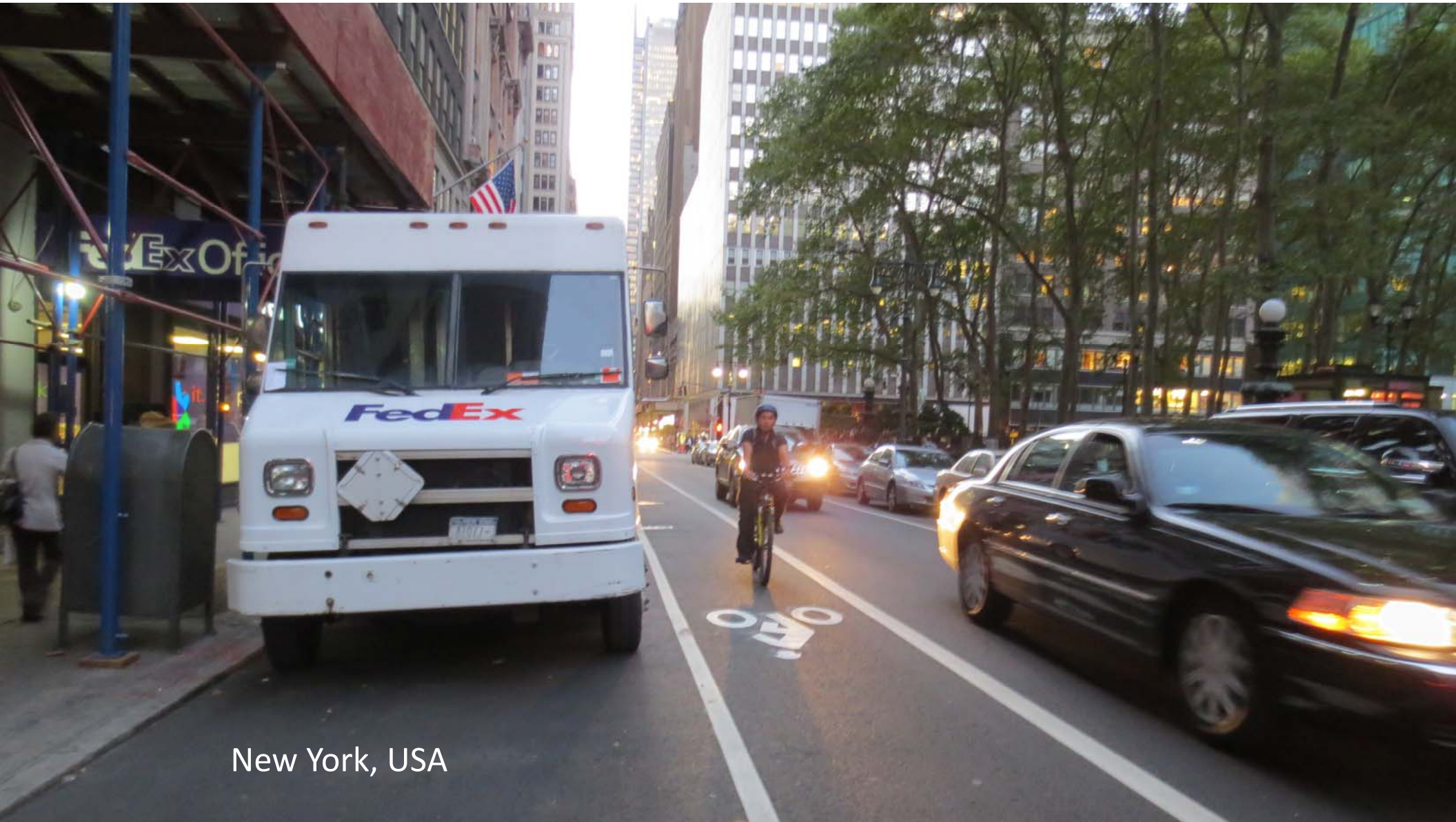
DRIVING
LANE



Copenhagen, Denmark

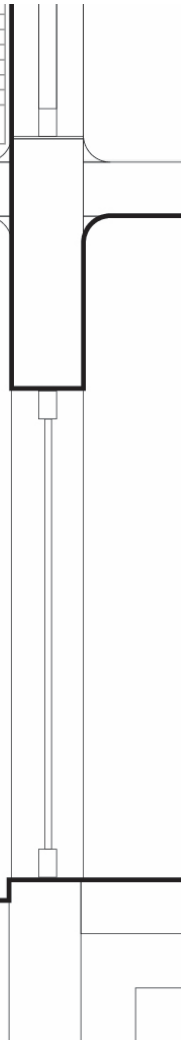
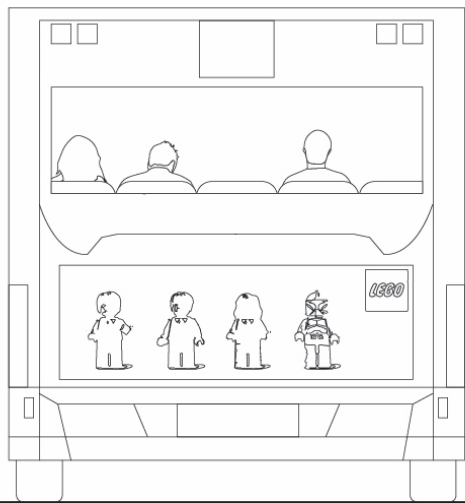


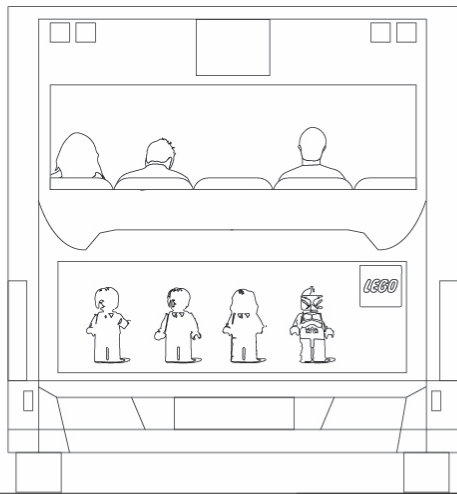
New York, USA



New York, USA

HOME OFFICE

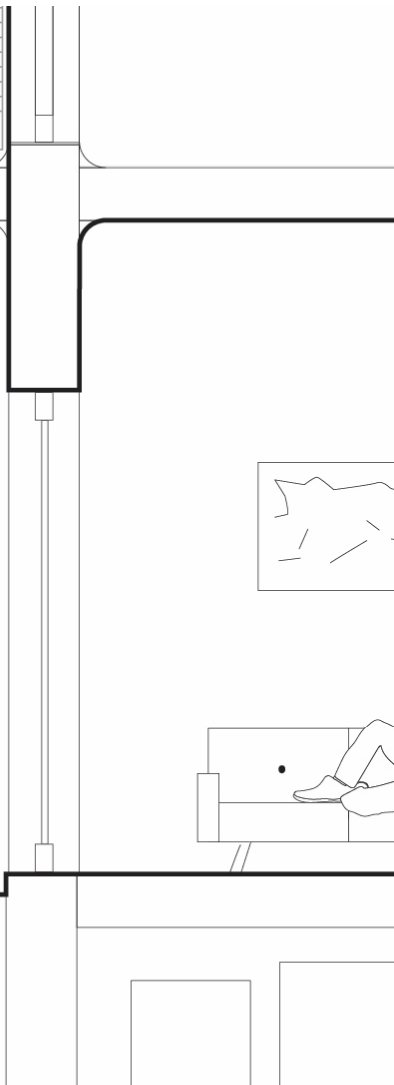




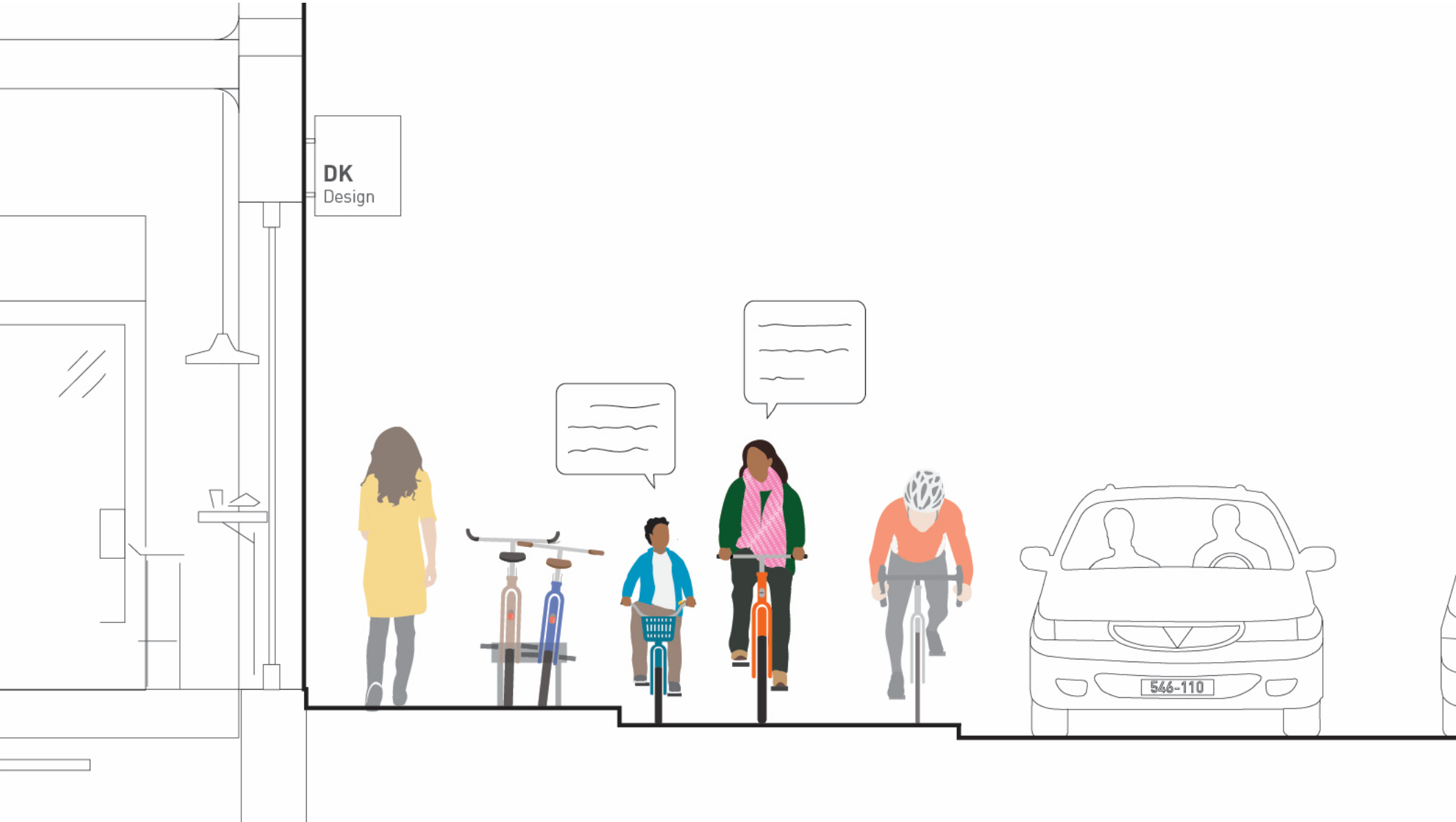
!!!
AAARGH



HOME OFFICE



DK
Design





Copenhagen, Denmark

La Passion du Bon Pain

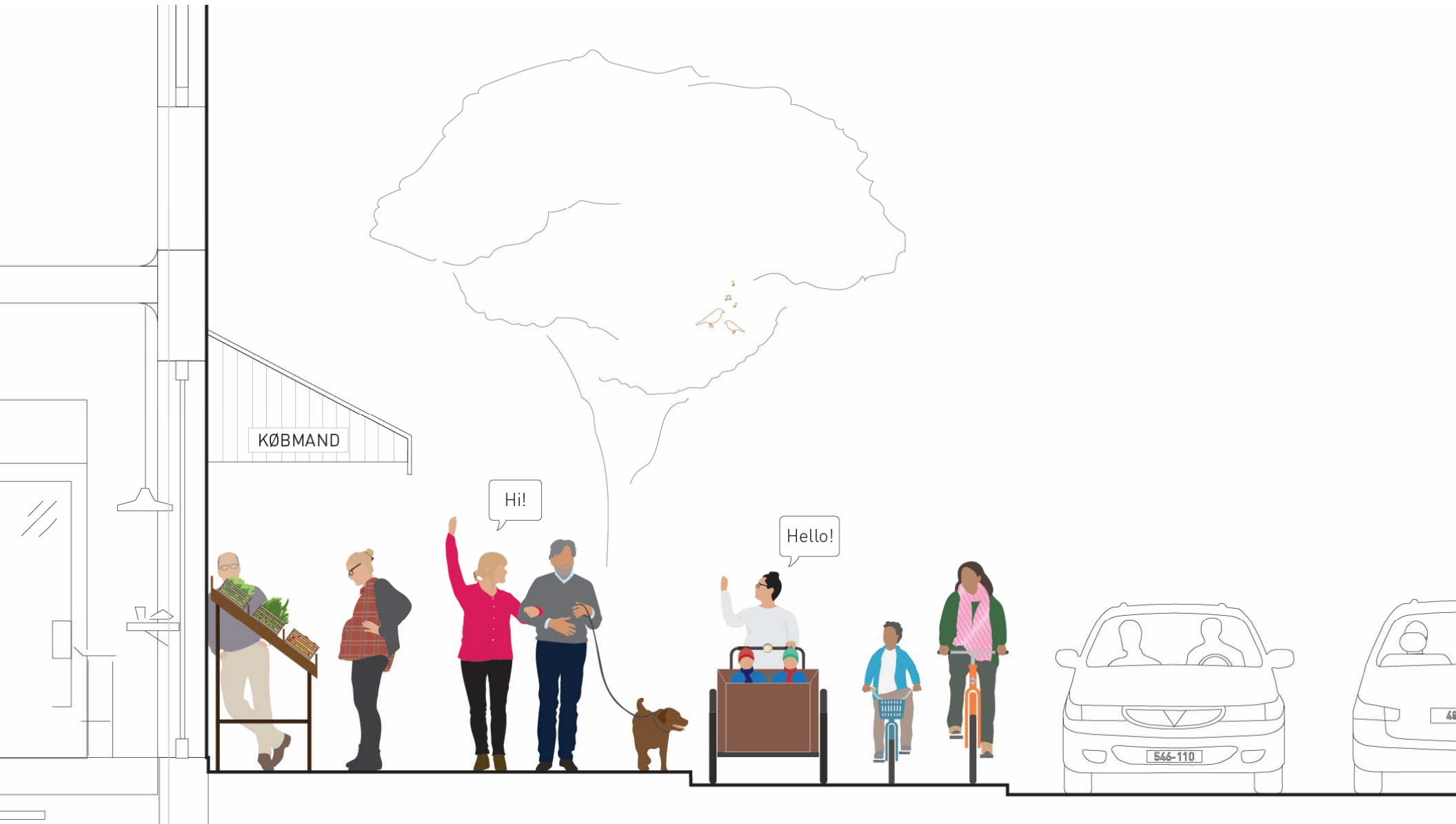
*Fabrication
Artisanale
La Passion du Bon Pain*

*Painpaulette
Pain au levain Naturel
Tartes aux Fruits*











36% 37% 38%.....41%

Hardware

A blue-tinted photograph of a busy city street. In the foreground, several people are sitting at small round tables with chairs, likely at an outdoor cafe. The street is filled with pedestrians walking in both directions. Buildings line both sides of the street, with various signs and storefronts visible. Notable signs include 'Pavilion Theatre' on the left, 'Theatre Royal' on a building in the distance, 'citi' on a building to the right, and 'Pinochio Ristorante Italiano Pizzeria' with the phone number 677676 on a building further right. The overall scene depicts a vibrant urban environment.



TRAFFIC LIGHTS:
Bicycle signals turns green
six seconds
before the car signals



Copenhagen, Denmark



FORBEHOLDT

Copenhagen, Denmark



LUFTPUMPE

LUFT AIR
Gratis tryk af cykelkøkken





Copenhagen, Denmark

Software

A blue-tinted photograph of a busy city street. In the foreground, several people are sitting at small round tables with chairs, likely at an outdoor cafe. A large group of people is walking down the street towards the camera. The buildings on either side are multi-story, with various signs and storefronts. A prominent sign on the right says "Pinochio RISTORANTE ITALIANO PIZZERIA Tel. 677676". Another sign on the left says "Leaders". In the background, a building has a sign that says "THEATRO". The word "Software" is overlaid in large, white, sans-serif font across the center of the image.



Copenhagen, Denmark

 **FANG CYKLISTEN** med øjnene
- ikke med døren Tryk på knuden

Catch the bicyclist
with your eyes - not with the door!





Copenhagen, Denmark



Copenhagen, Denmark








Copenhagen, Denmark



Copenhagen, Denmark

A group of people are riding bicycles on a snowy street in Copenhagen, Denmark. The scene is filled with winter attire, snow-covered bikes, and a blue callout box. The people are wearing heavy jackets, hats, and gloves. The street is covered in snow, and there are cars and buildings in the background. A blue callout box with white text is overlaid on the image, pointing towards the cyclists. The text in the box reads "70 % continue in the winter".

70 %
continue in
the winter

Copenhagen, Denmark



Copenhagen, Denmark



Copenhagen, Denmark

Is it because of the environment?

1%

Say yes

Copenhagen
Bicycle Account
2006

Copenhagens
cycling save over
90.000 t CO₂
annually



Is it because of financial reasons?

6%

Say yes

Copenhagen
Bicycle Account
2006



Is it because of the exercise you get?

19%
Say yes

Copenhagen
Bicycle Account
2006



Is it because it is convenient, fast and easy?

61%

Yes!

Copenhagen
Bicycle Account
2006





Cycling makes sense in terms of economy

Earn: 1,22 kr

Per cycled kilometer

Loose: 0,67 kr

Per kilometer in car

Return on cycle infrastructure projects = 12,6%

The Danish state requires a minimum return on 5%



LOUIS VUITTON



LOUIS VUITTON



Danish Export?

Gehl

Bicycle tracks - Copenhagen style bicycle tracks

Melbourne Australia

Home | Skip to content | News & Media Centre | Language Support | Contact Us | A-Z of whole site

Search [Advanced Search >](#)

city of Melbourne

- About Melbourne
- Community Services
- Arts & Events
- Environment & Waste
- Parks & Recreation
- Parking & Transport
- Business Services
- Building & Property
- About Council

[Walking, cycling and skating](#) > [Cycling](#) > ['Copenhagen style' bike separated lanes](#)





'Copenhagen style' bike separated lanes


The City of Melbourne has been exploring better ways to ensure all road users can share our roads safely.

In 2007, a new bike separated lane design was constructed along the northern end of Swanston Street, between Franklin and Faraday streets. Bike lanes now run alongside the footpath, with cars parking on the outside of the bike lane, closest to the road. A one metre wide island separates the bike lane from parked cars.

This style of bike lane has been used successfully in Europe, and is known as the 'Copenhagen' style of bike lane. The first bike lanes of this type were constructed in Copenhagen in Denmark.

Download the fact sheet here:

-  [Bike Separated Lanes Fact Sheet \(114kb\)](#) 
-  [Bike Separated Lanes Fact Sheet \(494kb\)](#) 



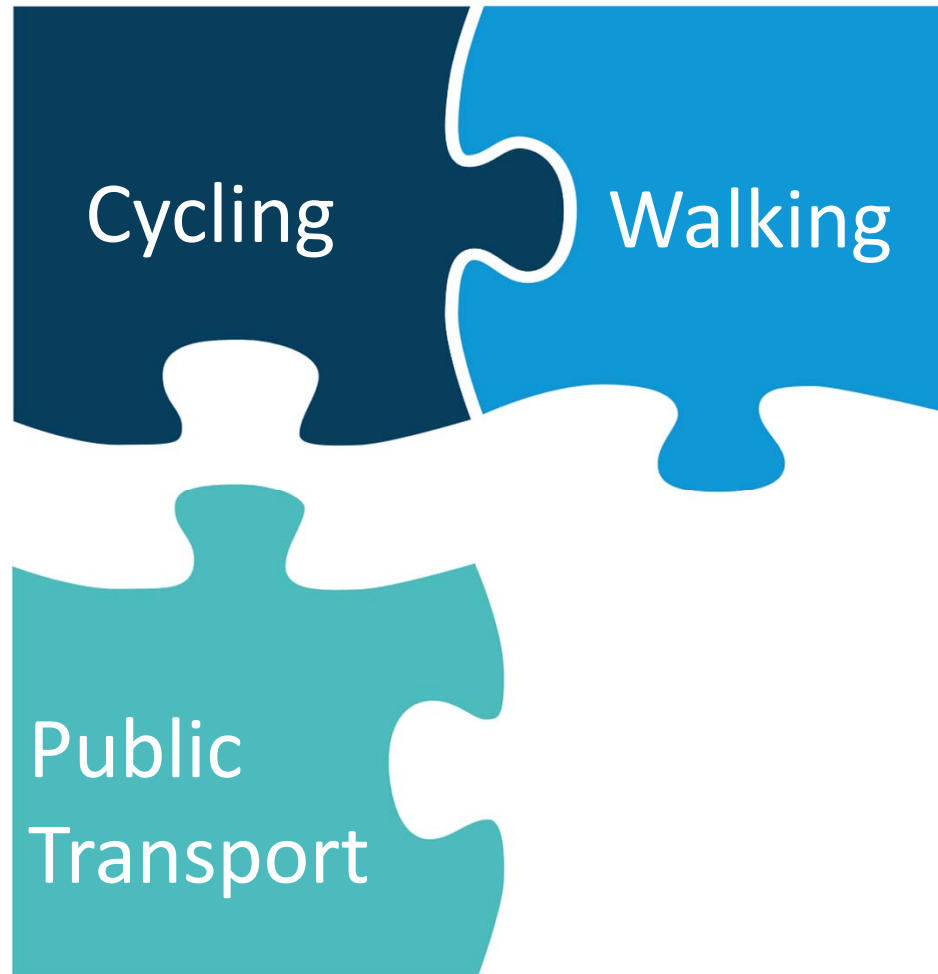
Walking, cycling and skating
Walking, cycling and skating - Introduction
Walks and tours
▼ Cycling
Bicycle Plan 2007 - 2011
Melbourne Bicycle Account: Cycling Census 2007
▶ 'Copenhagen style' bike separated lanes
Bike tracks
TravelSmart map
Road rules and traffic regulations



Melbourne –on bicycles
New “Copenhagen style bicycle lanes”



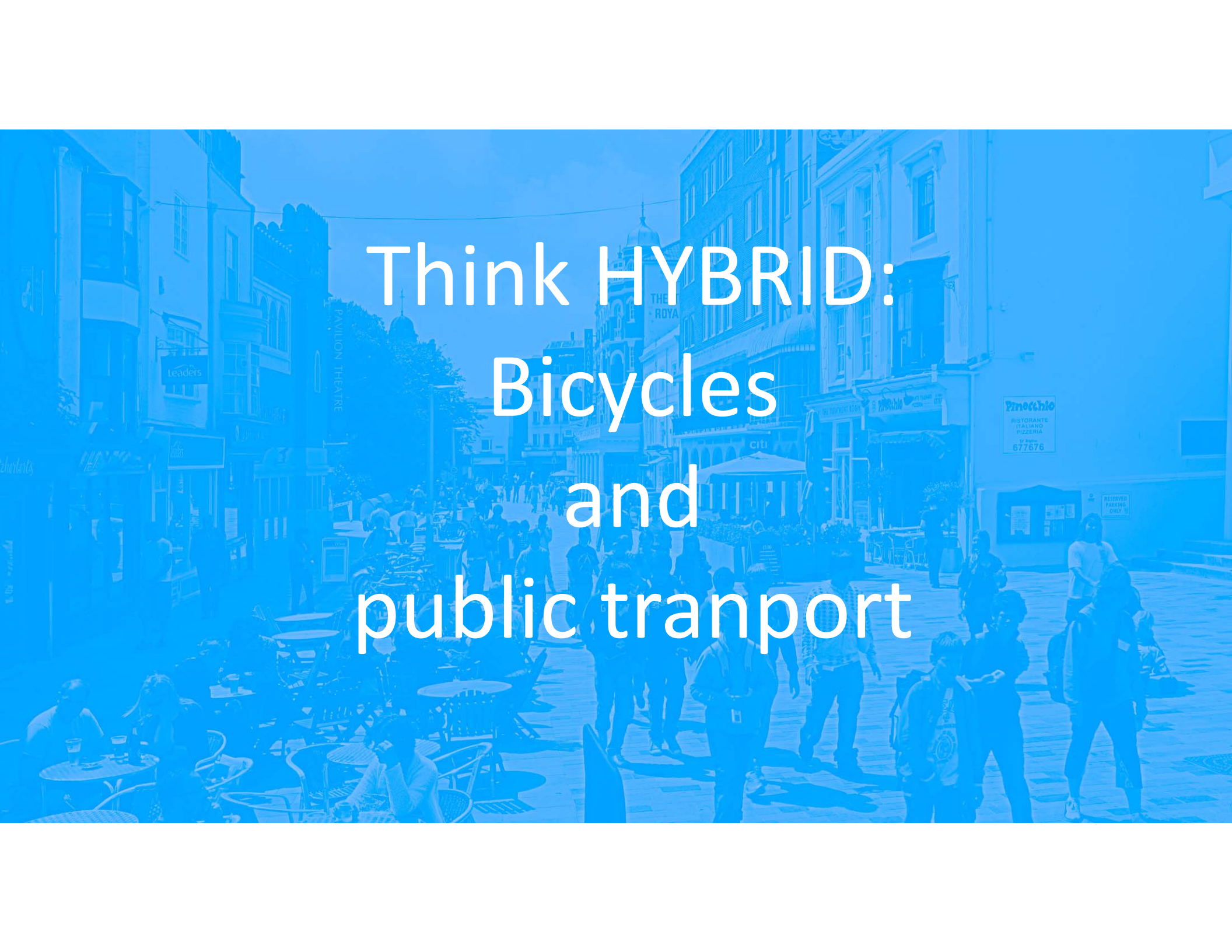




Cycling

Walking

Public
Transport



Think HYBRID:
Bicycles
and
public transport

11.17	7	Ringsted	
11.20	5	Kastrup / CPH Airport	
11.21	4	Nivå	
11.30	6	Søndersborg / Esbjerg	InterCity 841
11.32	3	Helsingør	
11.32	8	Malmö C / Göteborg C via Kastrup / CPH Airport	

De kan være forfaldig at gå til Hovedbanegården på grund af arbejde i forbindelse med de arbejder. Se flere detaljer mandag til fredag klokken 10-18.

Køge	1 min	spor	12
Hundige	4 min	spor	11-12
Frederikssund	6 min	spor	11-12

DSB Information

Hovedbanegården er kommet på trimarked
 Køb dem på Hovedbanegårdens Posthus eller på www.post Danmark.dk/netbutik

Nu kan du både købe din billet og pladsbillet i automaten

DSB
 DSB i Tullerød
 Hovedbanegården
 DSB i København
 DSB i Lyngby

Billetter Tickets

Klippekort

DSB

Billetter Tickets

Klippekort

DSB











Bicycles on commuter trains











ns de Calais



Frein KE-PA Mg   - 15.40r
← 72.80 r





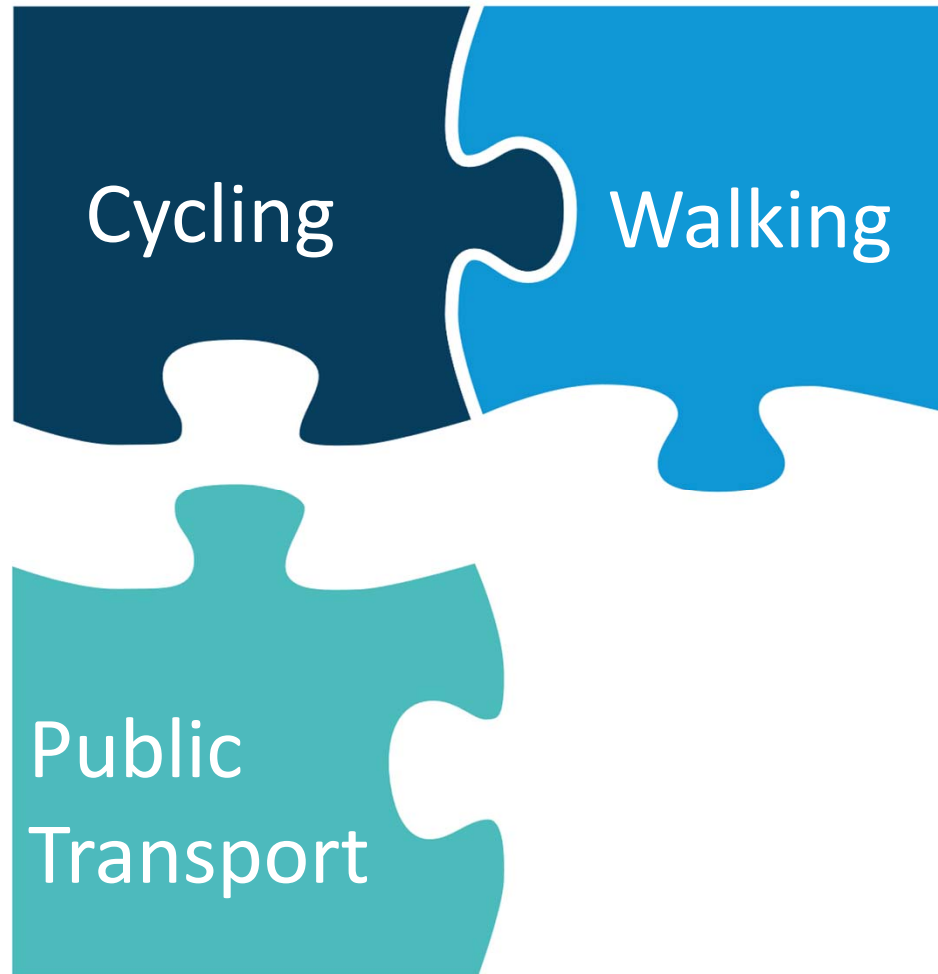




Bicycles on metro







Cycling

Walking

Public
Transport



Melbourne, Australia

Experiencing the city at eye-level

Bogota, Colombia







The pavement as a platform



Bern, Switzerland



Vienna, Austria

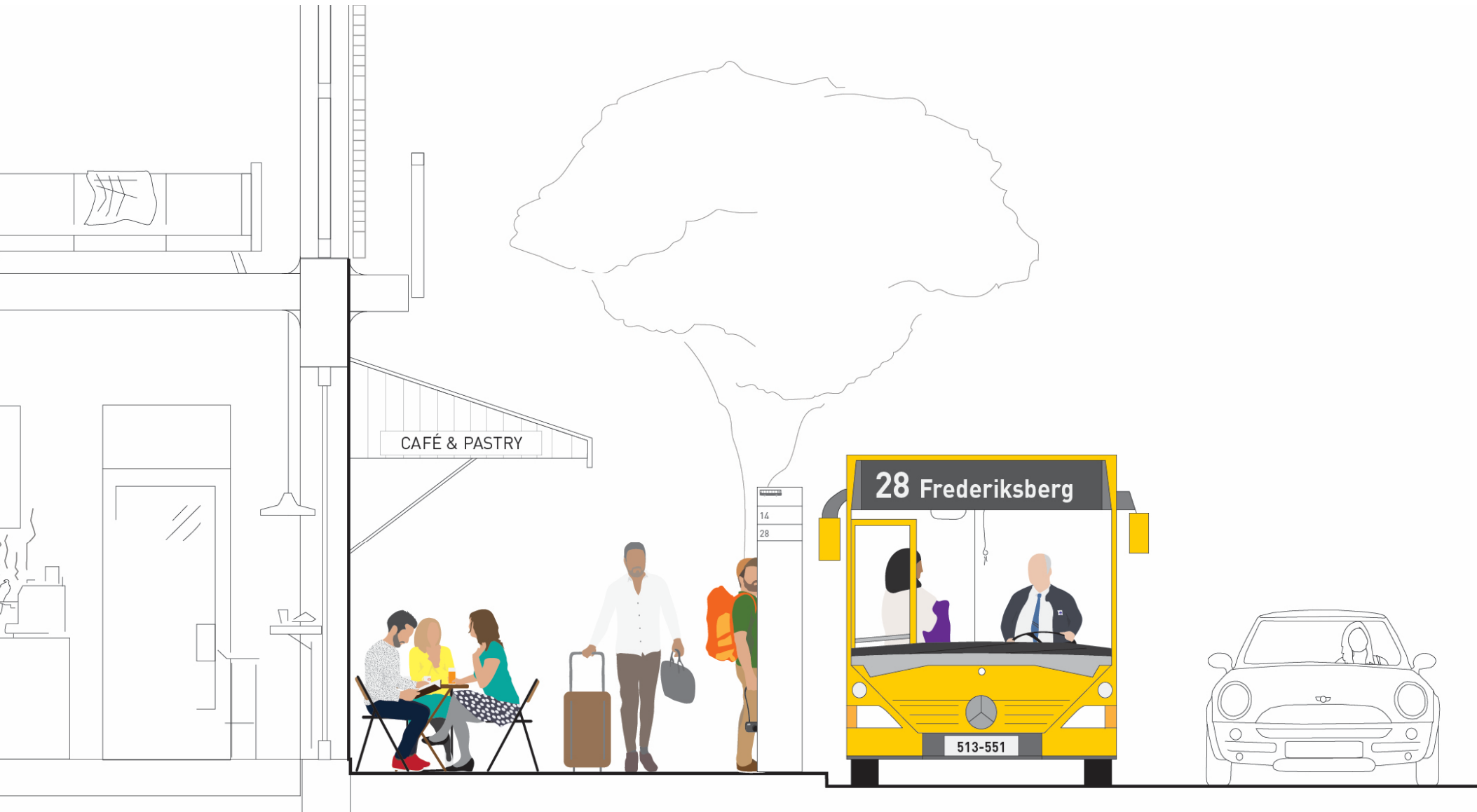


Vienna, Austria











Waiting for public transport can feel 1-10 x longer than the actual time

*

Oplevet rejsetid



x 1

Rejsetid med siddeplads



x 2-5

Gang til/fra



x 2-4

Skifte transport middel



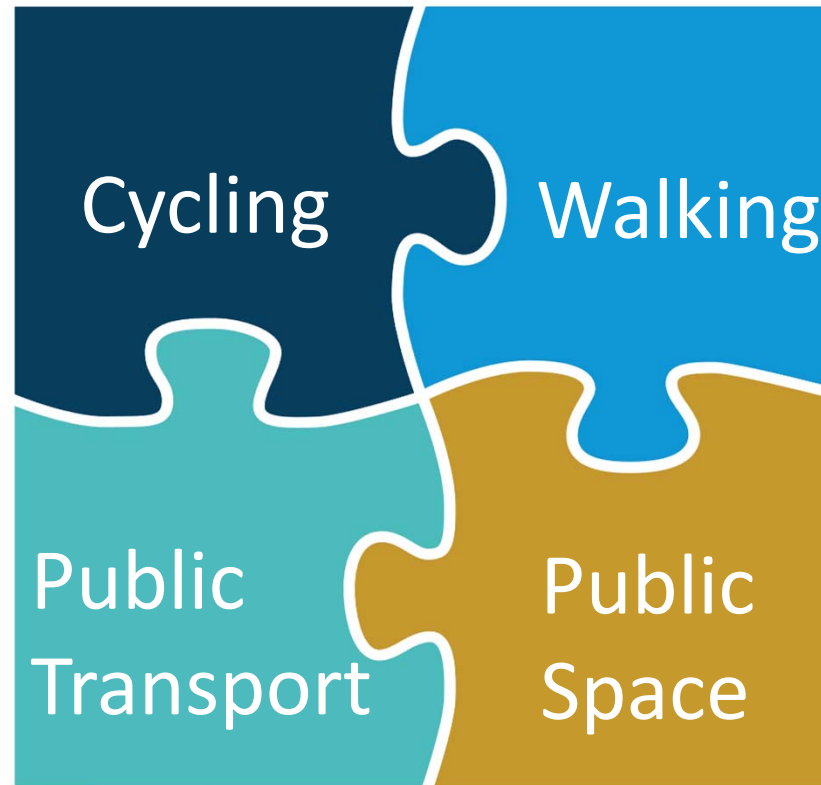
x 1-10

Ventetid



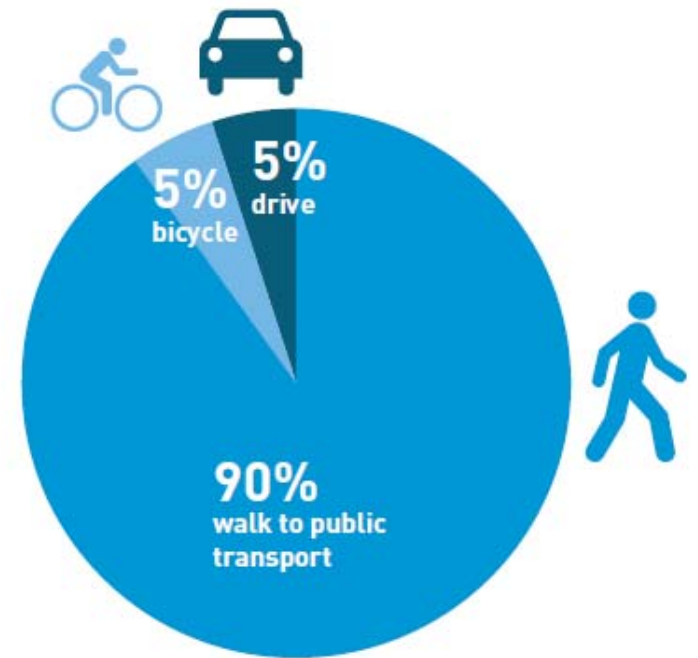
x 9-19

Ventetid ved forsinkelse

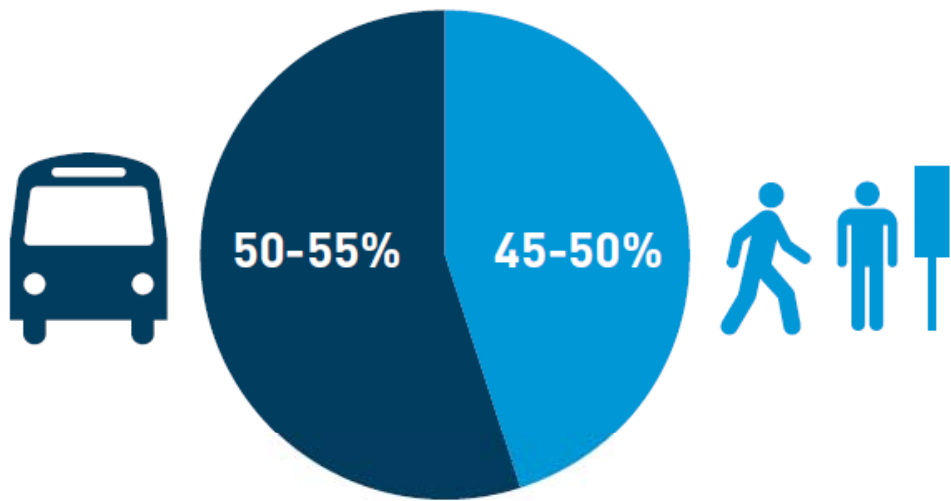




Making the most out of the tram means making the best walking environment



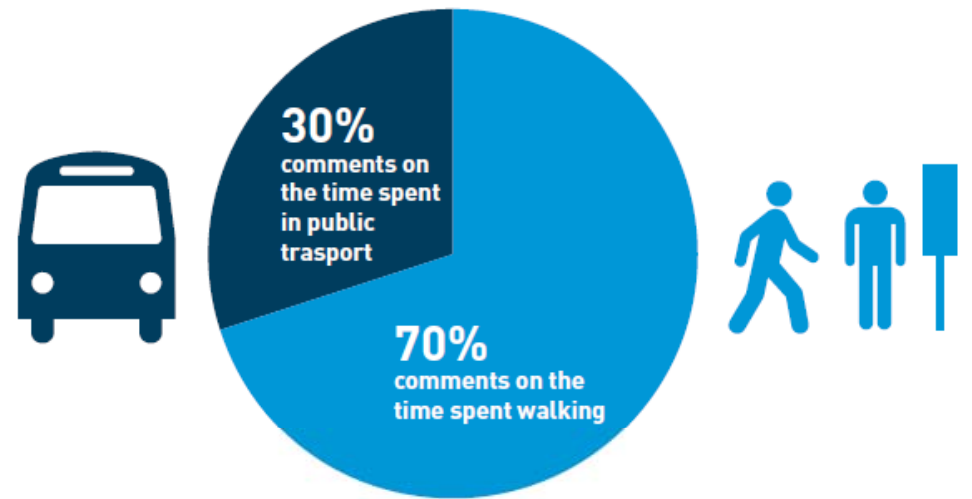
Most people walk to public transportation in cities



How long last the stages of a public transport journey?

* Research institute Socialdata (6000 interviews)

Walking and waiting is a big part of the public transportation journey



Asking after the remembered experience of a public transport journey...

* Research institute Socialdata (6000 interviews)

Most remembered experience comes from the journey on foot

Quality of public space effects walking distance



+70% lengre



Bildominert



Forgjenger orientert

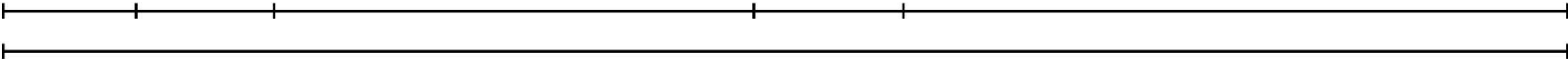
Peperna 1982, Hillnhütter 2016



The Street is
a Public Space

Gehl

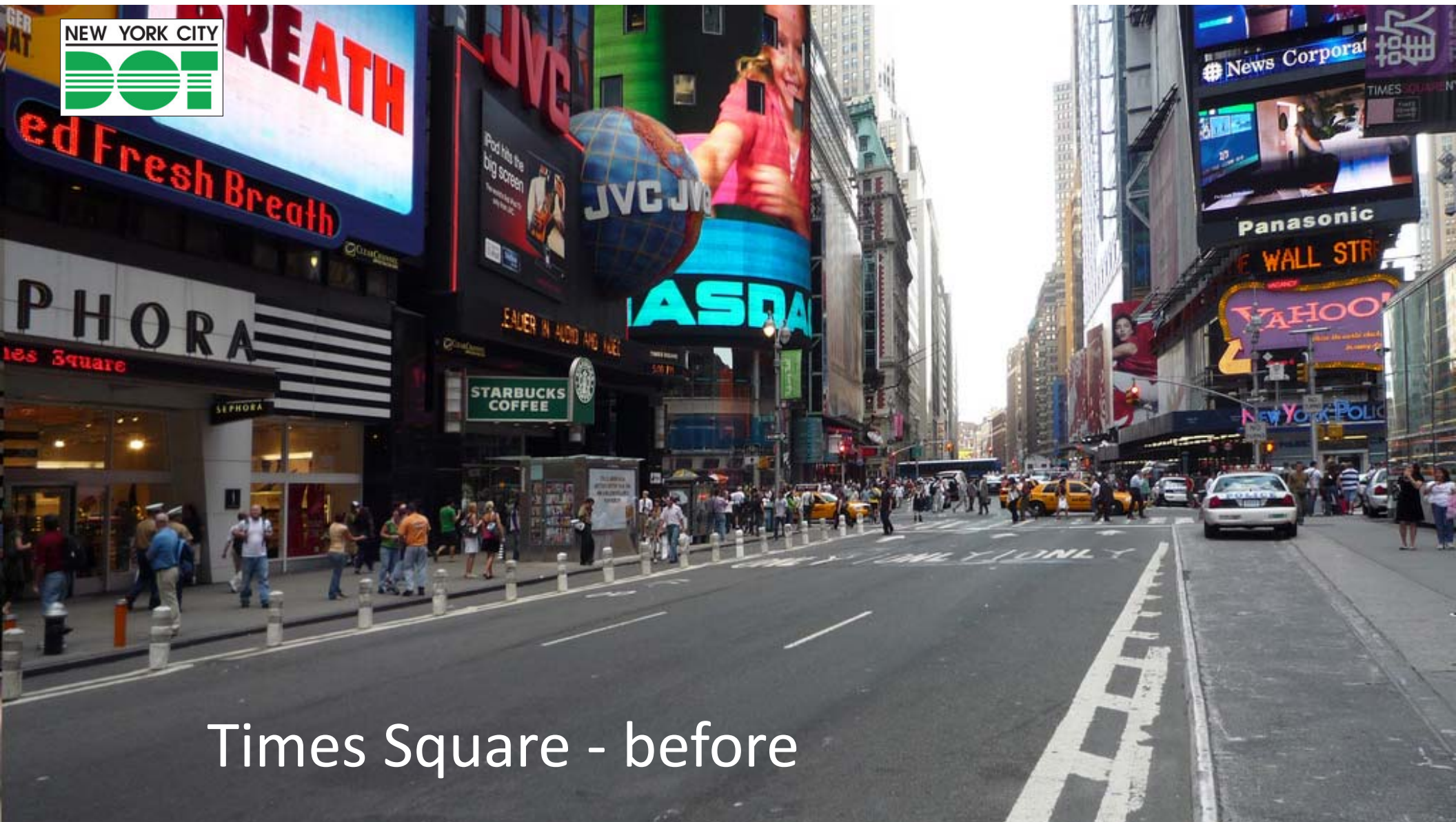






Copenhagen, Denmark





NEW YORK CITY



Times Square - before

NEW YORK CITY



Times Square - after





















On facebook, there are lots of comments comparing the deck with a beach.
#praiapaulistana
#praiarbana

ASK3
ASK23

Goal: To a place that is more than transport

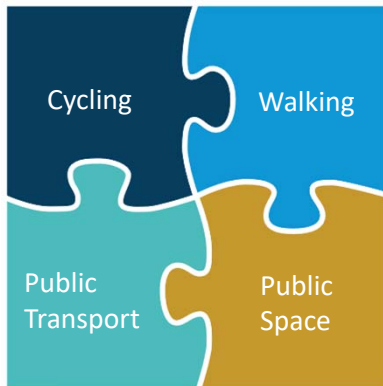


Slide 204

ASK3 MORE THAN TRANSIT
/ENHANCING THE EXPERIENCE
of PUBLIC TRANSPORT, WALKING
& CYCLING IN THE CITY
Anne Sofie Kvist, 12/02/2015

ASK23 photo courtesy SP Urbanismo - photo to the left - photo to the right by David Sim
Anne Sofie Kvist, 13/02/2015





= Great Cities for People!

A blue-tinted photograph of a busy city street. The street is filled with people walking, some sitting at outdoor cafe tables. Buildings line both sides of the street, with various signs and storefronts visible. The overall scene is vibrant and captures the energy of an urban environment.

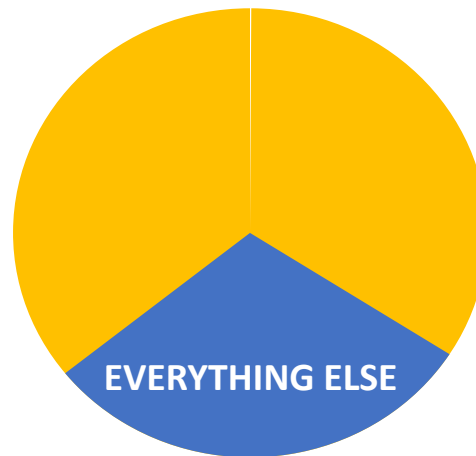
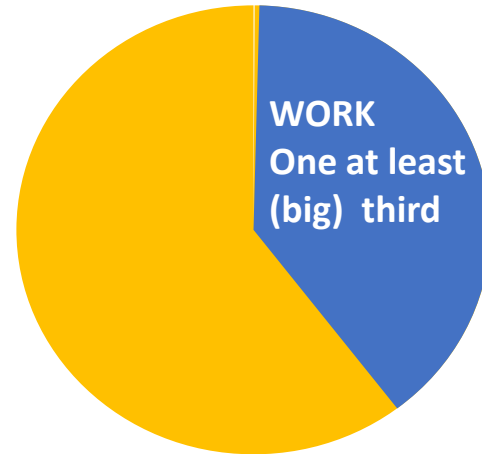
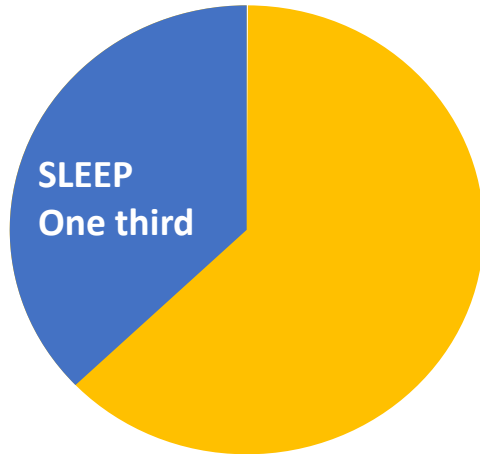
Time is valuable

Gehl

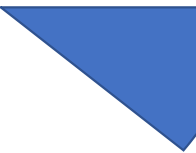
A blue-tinted photograph of a busy city street. The street is filled with pedestrians, some walking and some sitting at outdoor cafe tables. Buildings line both sides of the street, with various signs and storefronts visible. The overall atmosphere is one of a vibrant, pedestrian-friendly urban environment.

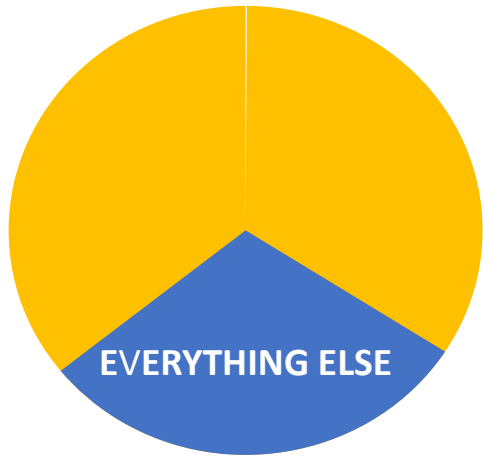
Time is democratic

Gehl

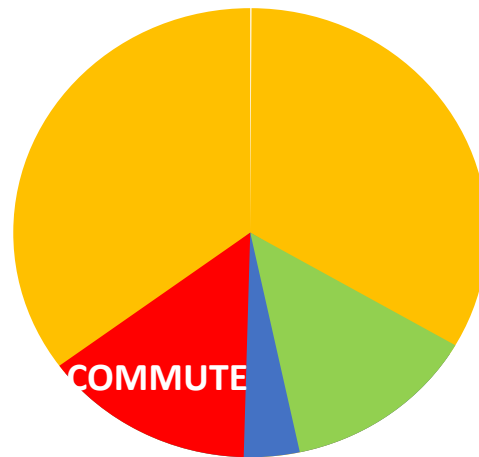
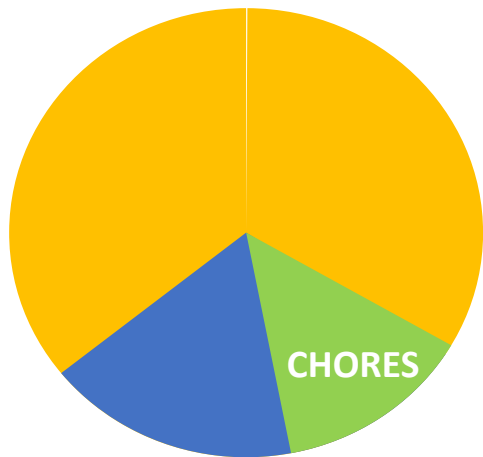


Less than 8 hours left...





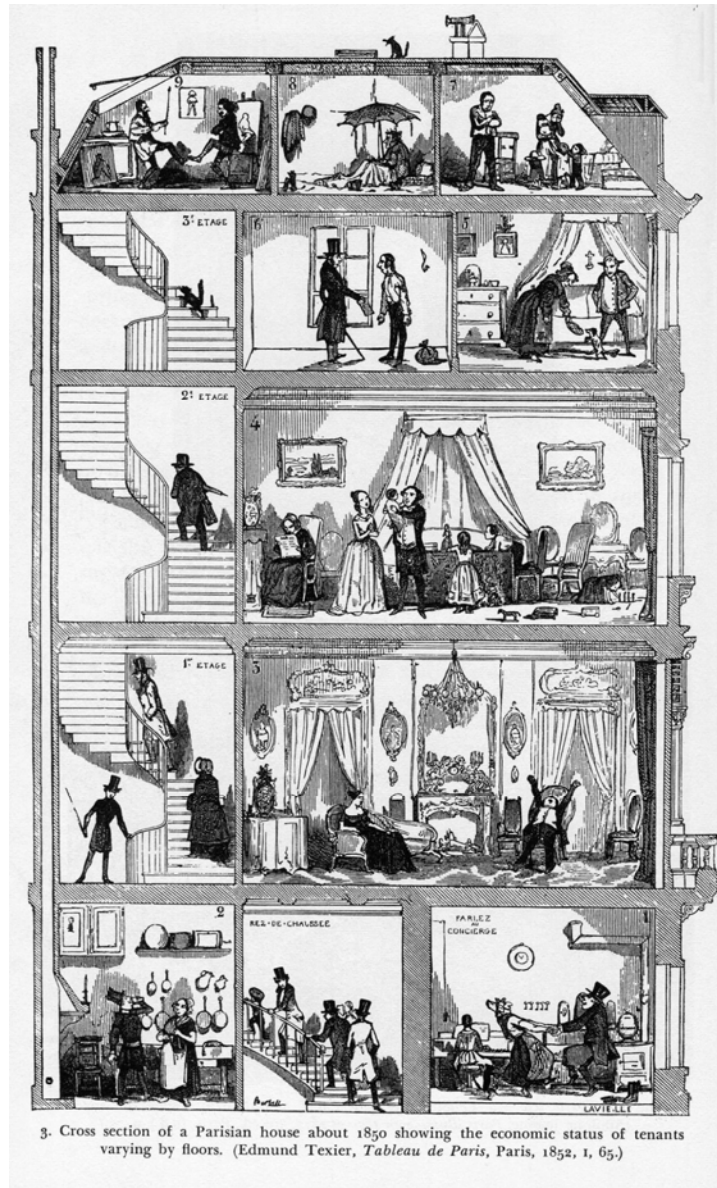
= Less than 8 hours




What's left?







3. Cross section of a Parisian house about 1850 showing the economic status of tenants varying by floors. (Edmund Texier, *Tableau de Paris*, Paris, 1852, 1, 65.)

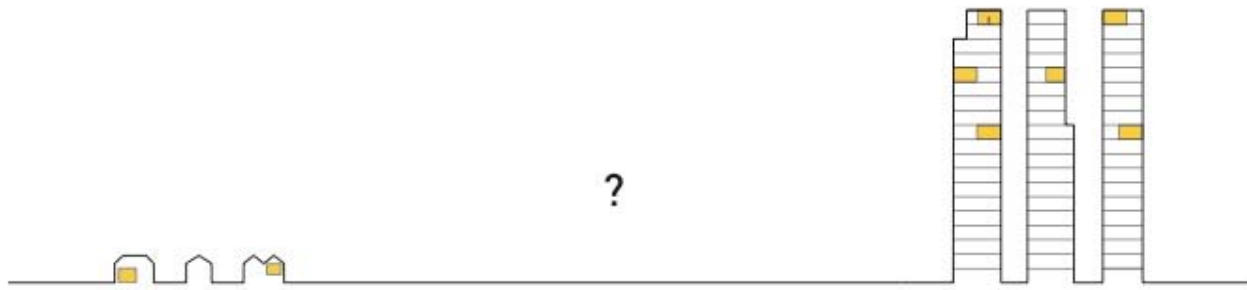


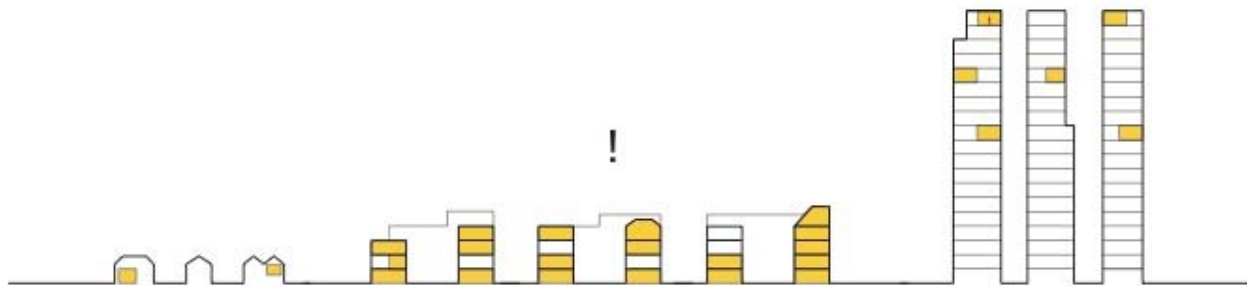
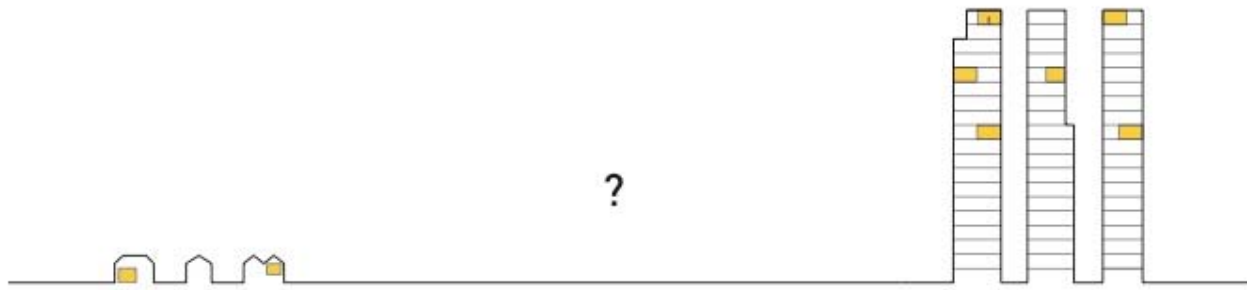
It's about
the democracy of
Accessing the Assets

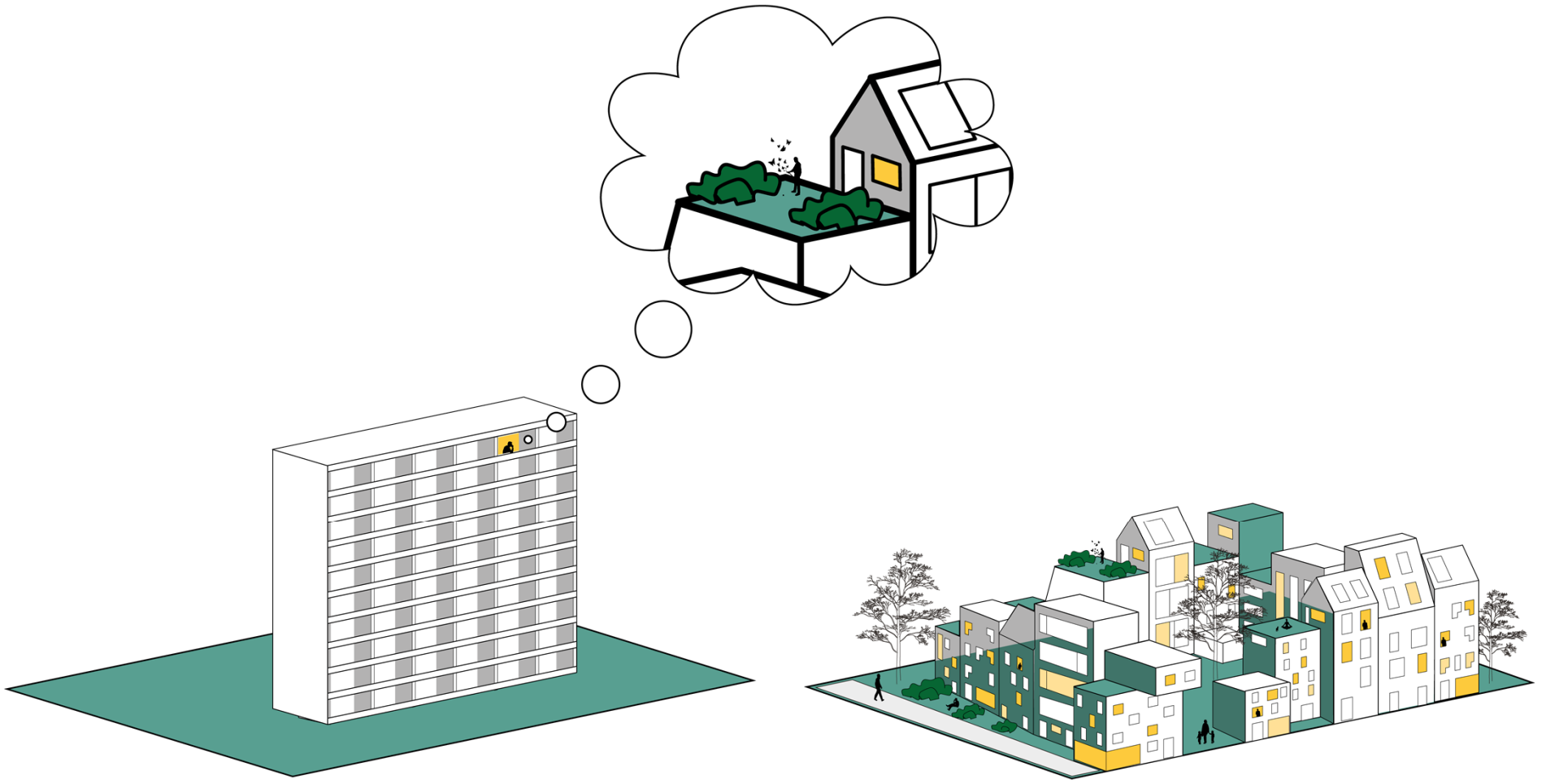
But it's also about
Quality of Life

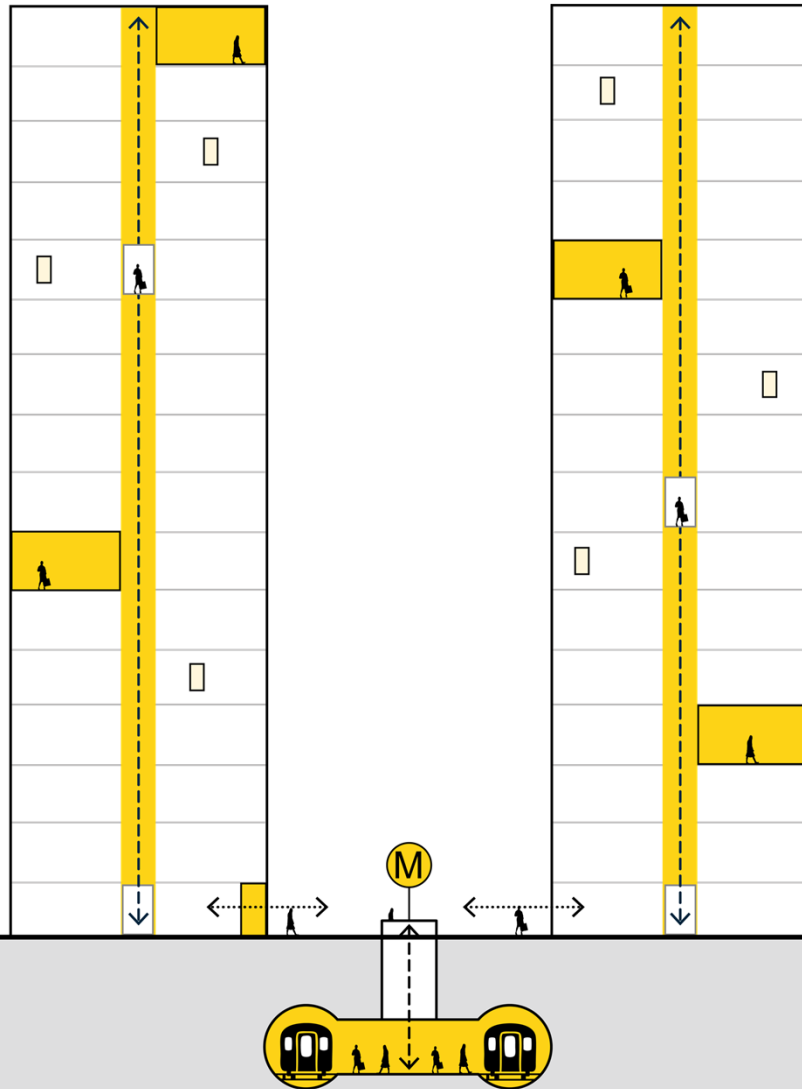
Gehl



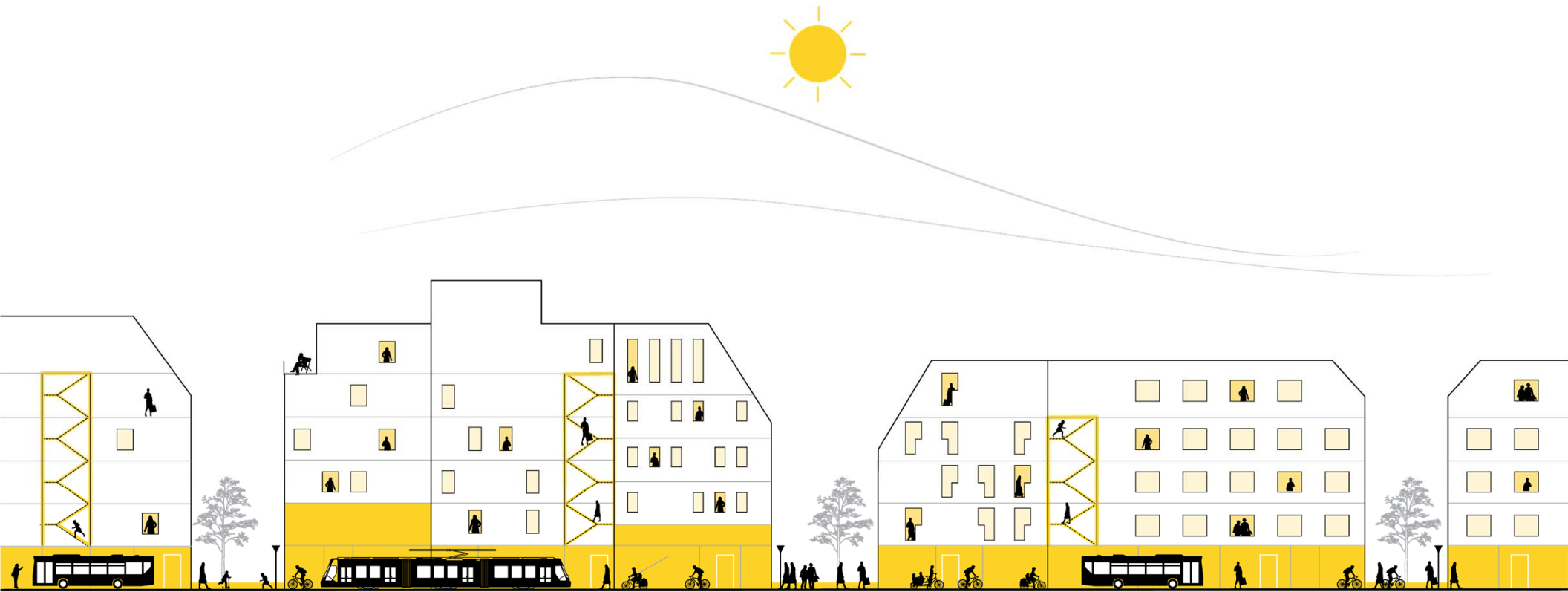








TOD
transit-orientated
development



neighborhood-orientated transit



The longest journey
starts with a single step

Lao Tzu

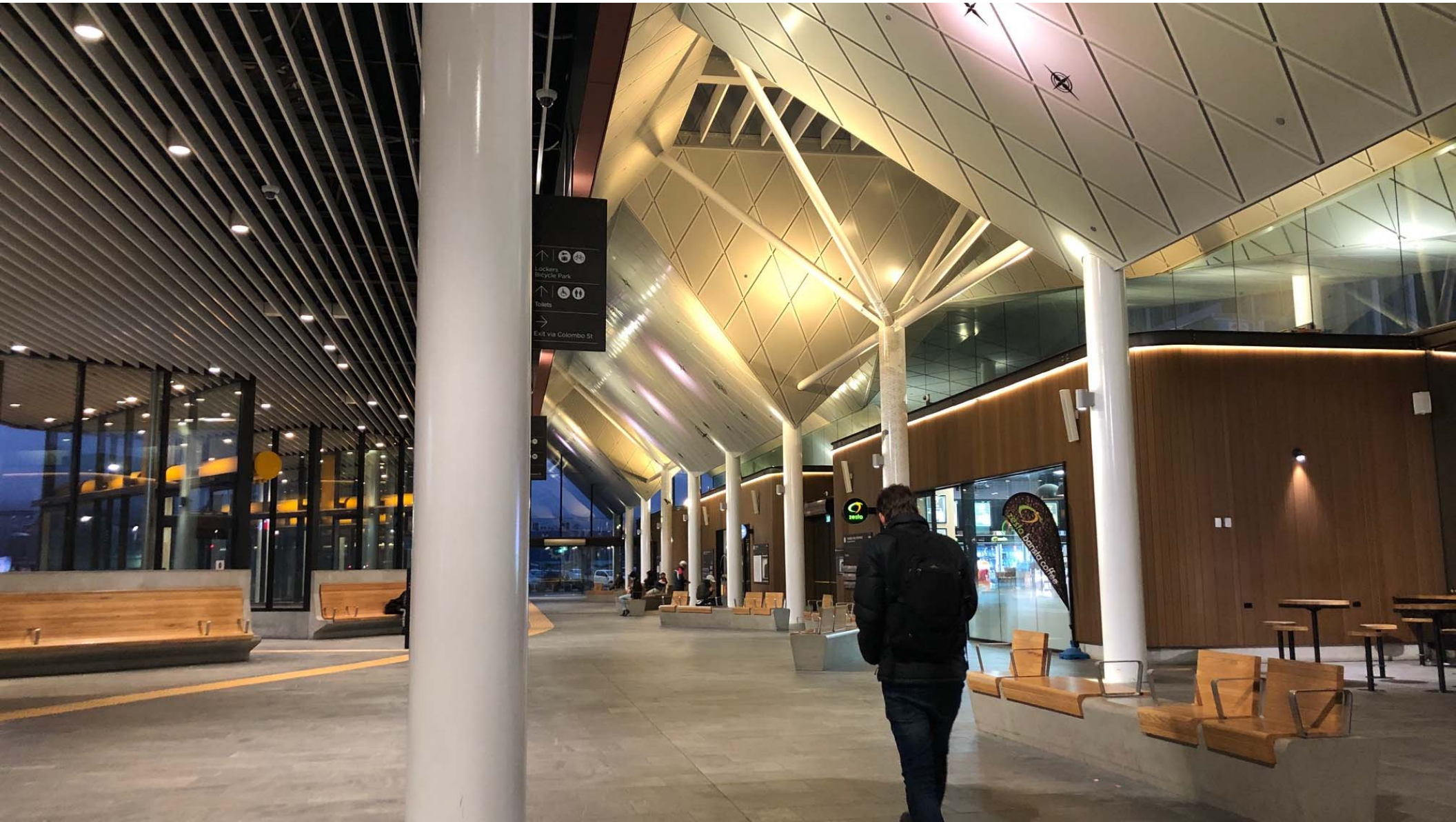




Back to Christchurch!

Gehl







Tell us
what you
think



106,000 ideas



Green City

Living streets... parks, playgrounds for young and old...

Simon and Ronald, Christchurch

Aim high. Develop a world class, sustainable, modern green city. The next Malmö, Vancouver, or Reykjavik. Establish a new global benchmark!

Gareth, Bryndwyr

Pretty sure we're named the Garden City. Live up to that name. The more green, the happier and brighter the whole city looks.

Guido, Christchurch

Integrate nature with the urban form: expand riverside green spaces, link with more green pockets elsewhere, recreate native ecosystems.

Fiona, Rena and Teo, Hillsborough

When I walk through the city I wish to see my Ngāi Tahu heritage reflected in the landscape. Our special indigenous plants that we used for scents, weaving, food and medicine are something unique that we can all celebrate.

Maruhaeremuri Stirling, Ngāi Toāhuriri/Ngāi Tahu

Let's use the Avon River as a natural pedestrian and cycle connected pathway across the city.

Gabrielle, Burnside

Let's use the Avon River as a natural pedestrian and cycle connected pathway across the city.

Gabrielle, Burnside



Before



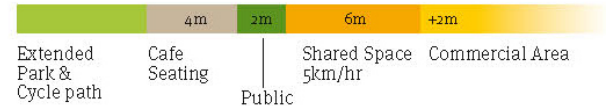
After



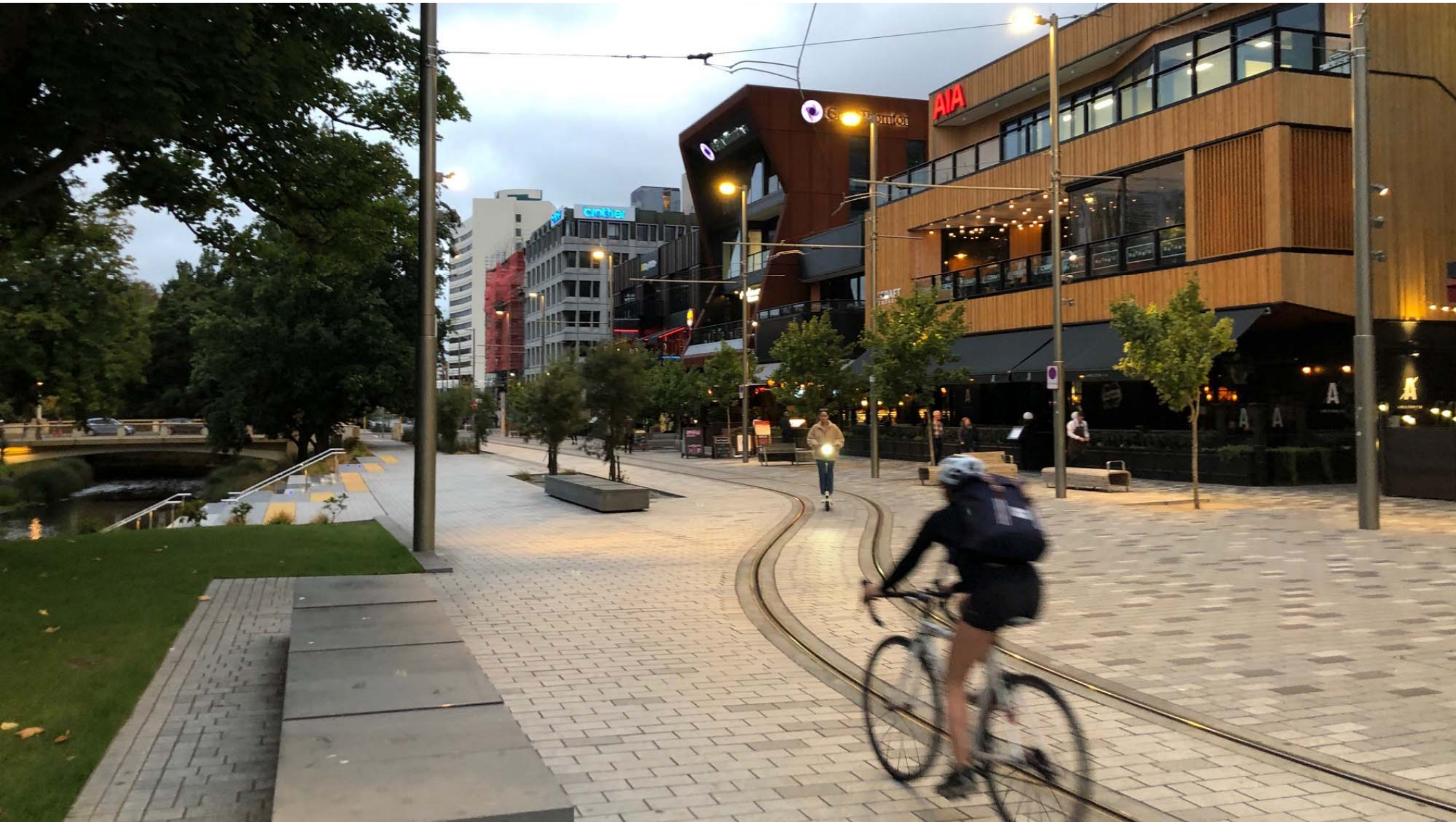
Cycle path

Revegetation of native species

Hard & Soft Landscape Surfaces













david@gehlpeople.com