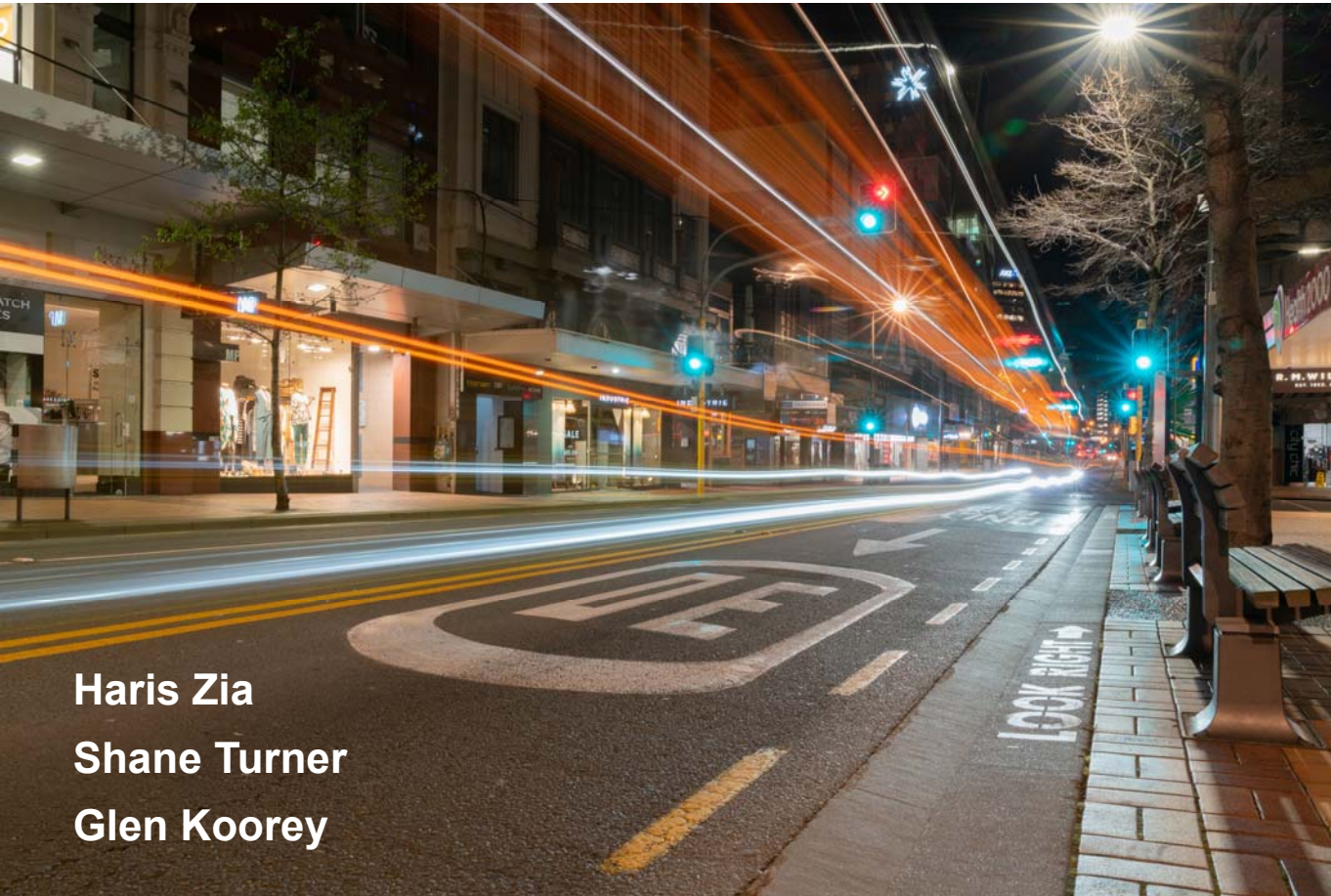


Safe Speeds for All



Haris Zia
Shane Turner
Glen Koorey

**Insightful solutions.
Empowering advice.**



Photo: Tim Hughes, NZTA



Enclosed mobility scooter



20 km/h mobility trike



Self-balancing uniwheel



Self balancing scooter



E-scooter



Yike Bike



E-skateboard



OGO (NZ-made self balancing chair)

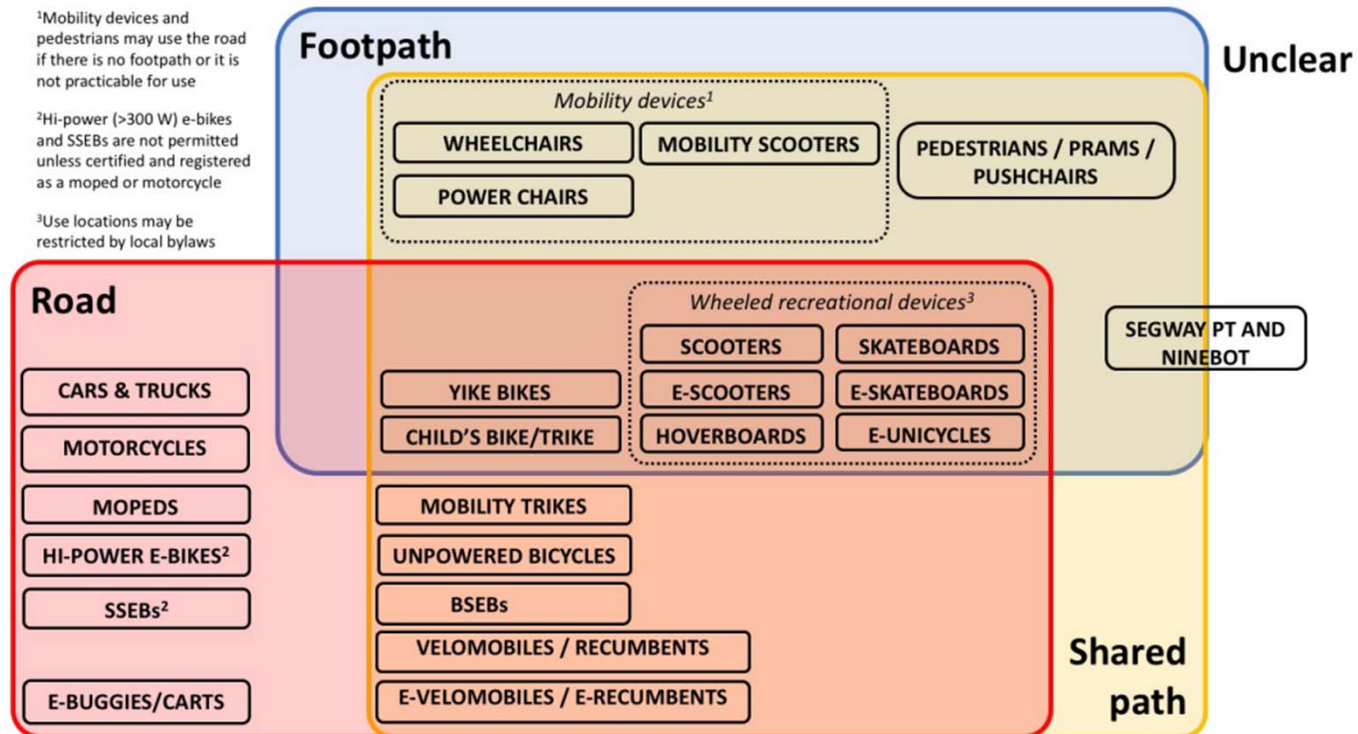


Elf e-trike (similar to a bicycle)

ViaStrada (2017) RR621

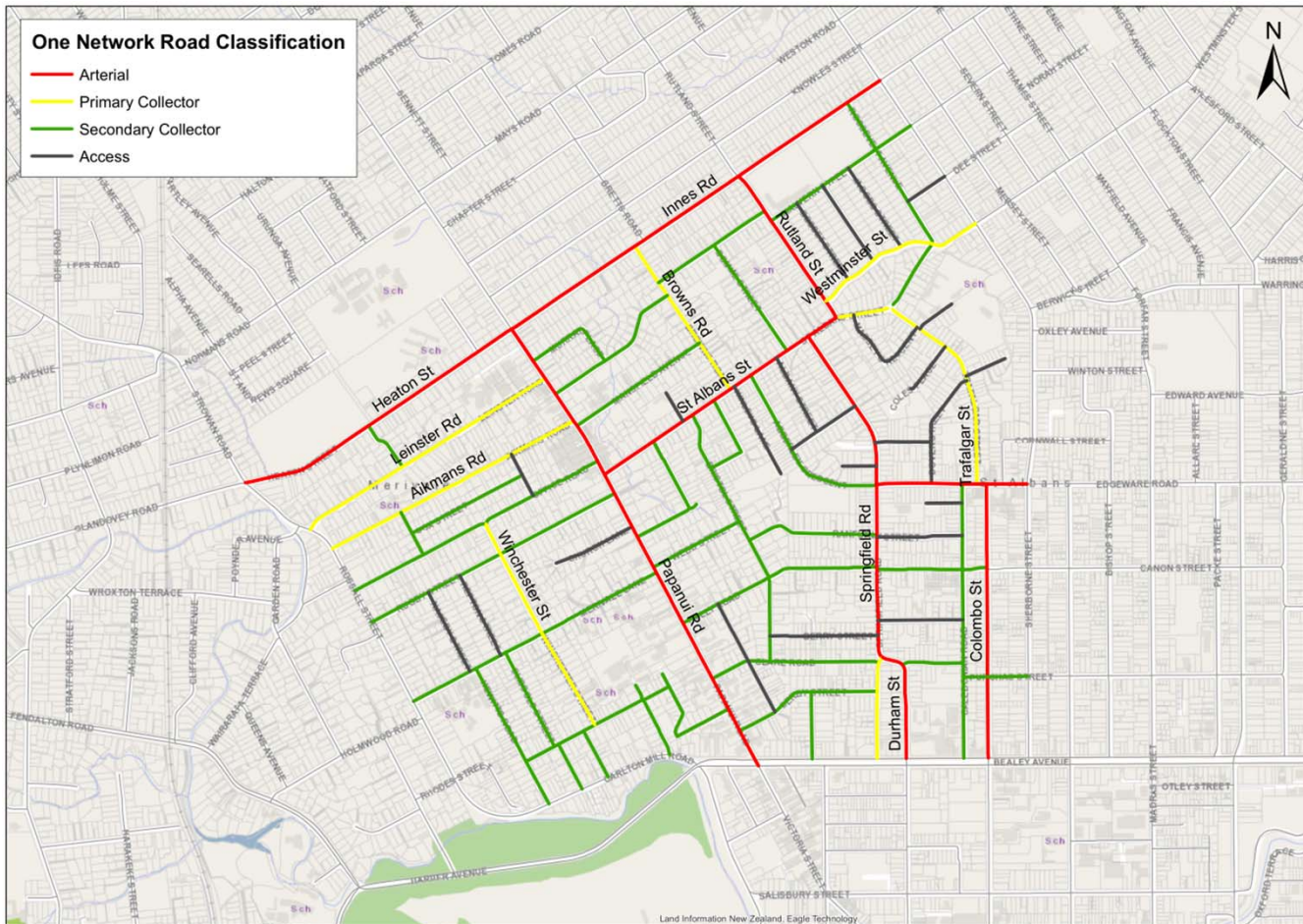
<https://www.nzta.govt.nz/resources/research/reports/621/>

Existing Road Allocation



Source: ViaStrada (2017) RR621

Rethink allocation of urban space to accommodate various modes and set safe speeds for all road users







Safe Speeds for All / March 2020





Safe Speeds for All / March 2020





Safe Speeds for All / March 2020



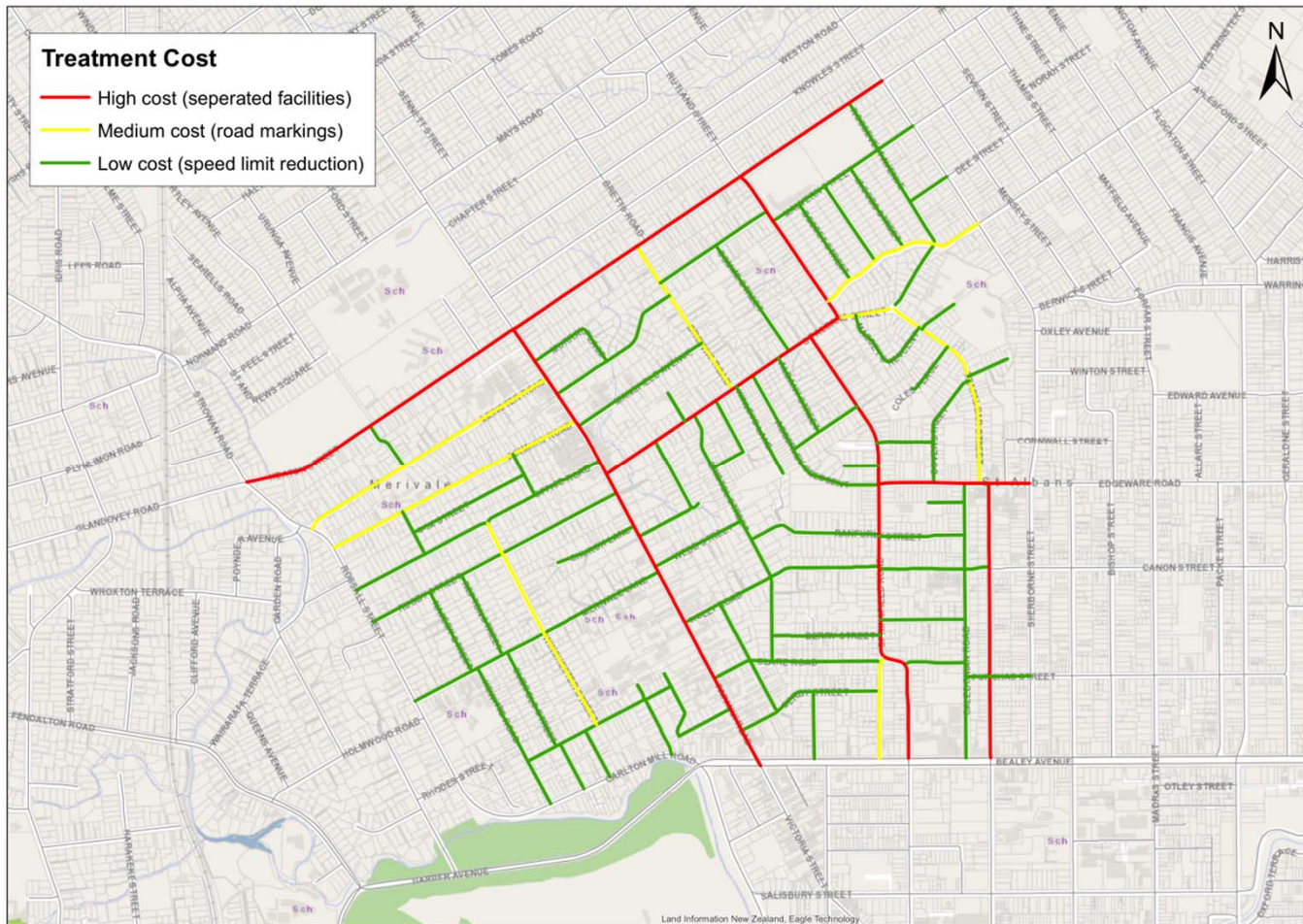


Safe Speeds for All / March 2020



Appropriate infrastructure and Safe System speed zones depend on:

- Placemaking function
- Modal hierarchy
- Volume of users
- Desired level of service
- Road dimensions



Thank you!

Contact

Haris Zia

Principal Transportation Engineer

www.abley.com

haris.zia@abley.com

020 4019 8839

