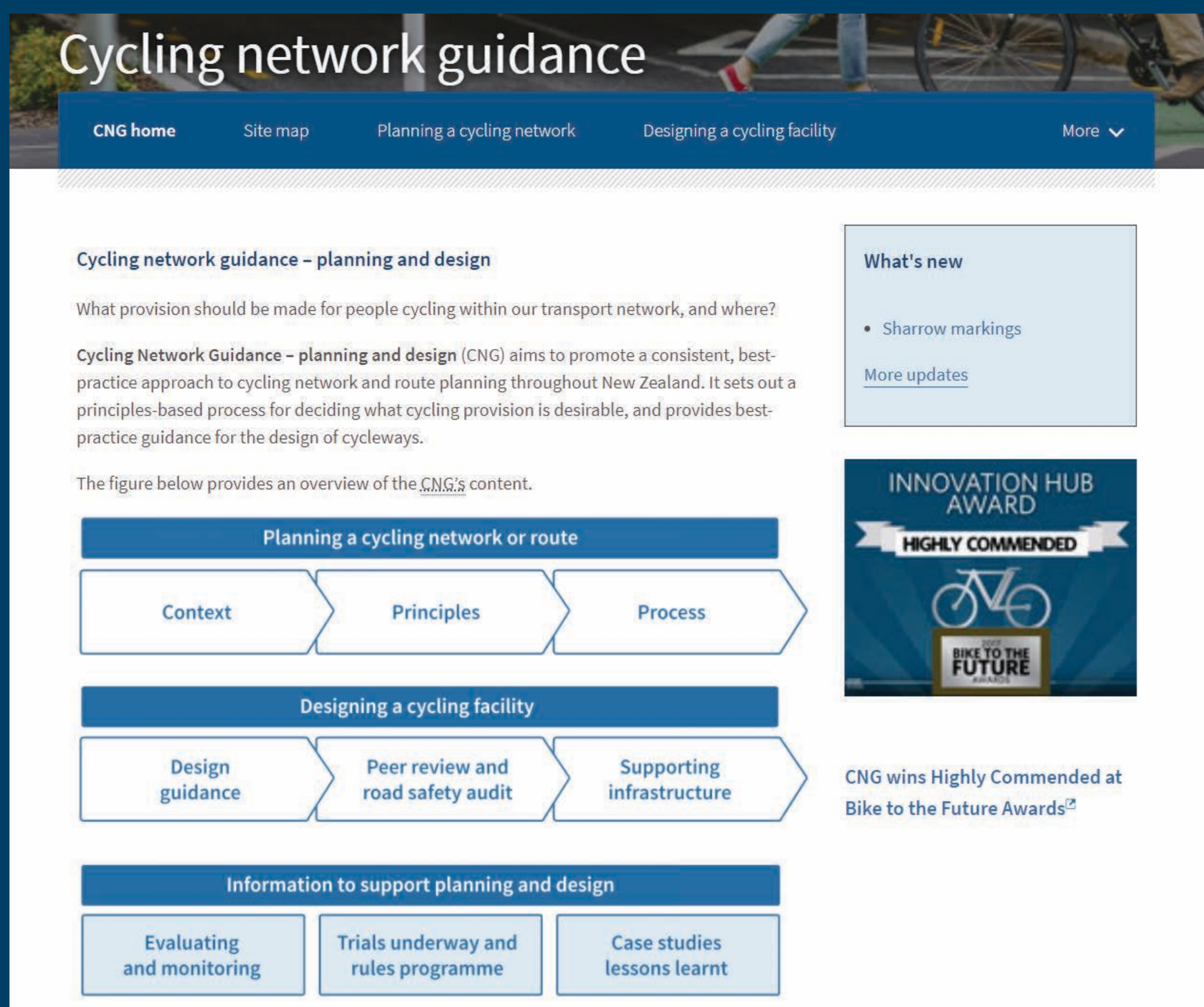


Cycling network guidance (CNG) updates

The Cycling network guidance was first published by Waka Kotahi NZ Transport Agency in July 2016 but, since then, existing content has been amended and new topics added.



CNG website homepage

<http://nzta.govt.nz/cng>

The team: ViaStrada, Waka Kotahi, Abley, external consultants

Typical update process

1 Tasks identified through:

- ▶ Trials and case studies
- ▶ CNG team input
- ▶ Changes to legislation
- ▶ Development of overlapping guidance

2 Tasks prioritised

- ▶ Lead assigned from team
- ▶ Draft prepared; internally reviewed
- ▶ Waka Kotahi review in detail
- ▶ Feedback from AMIG (most updates) and RCAs (case studies)
- ▶ Overlaps with other guidance? Involve external parties

3 Spread the word

Publish on the website, then spread via:

- ▶ What's new? CNG website link
- ▶ Relevant industry publications
- ▶ AMIG and RCA representatives

Types of new content

New guidance

e.g. Choice of cycle lane separator



Photo: John Lieswyn

Amended guidance

e.g. Buffered advance stop box



Photo: WSP Ltd

Case studies

e.g. Separated cycleway (Carlton Gore Road)



Photo: Axel Downard-Wilke

Other updates

e.g. Trials underway: Diagonal cycle signals

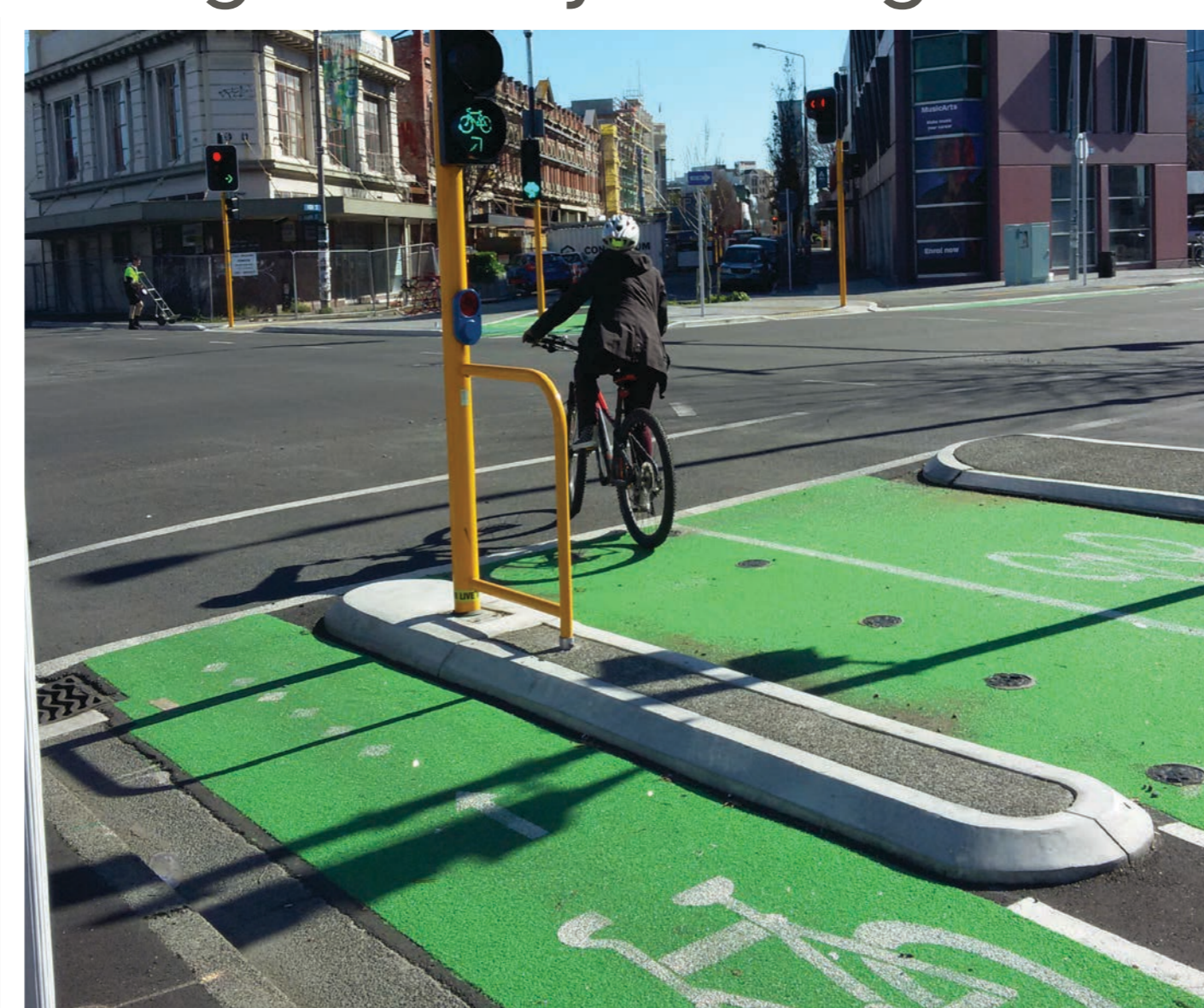


Photo: Megan Gregory

“ If we get planning and design right in this area, we improve safety and accessibility, increase cycling (and walking) mode share. Health and environment benefits follow. Essentially, it's how we decarbonise transport.



Axel Wilke
axel@viastrada.nz



Glen Koorey
glen@viastrada.nz



Gerry Dance
gerry.dance@nzta.govt.nz

CNG feedback? cycledesign@nzta.govt.nz

