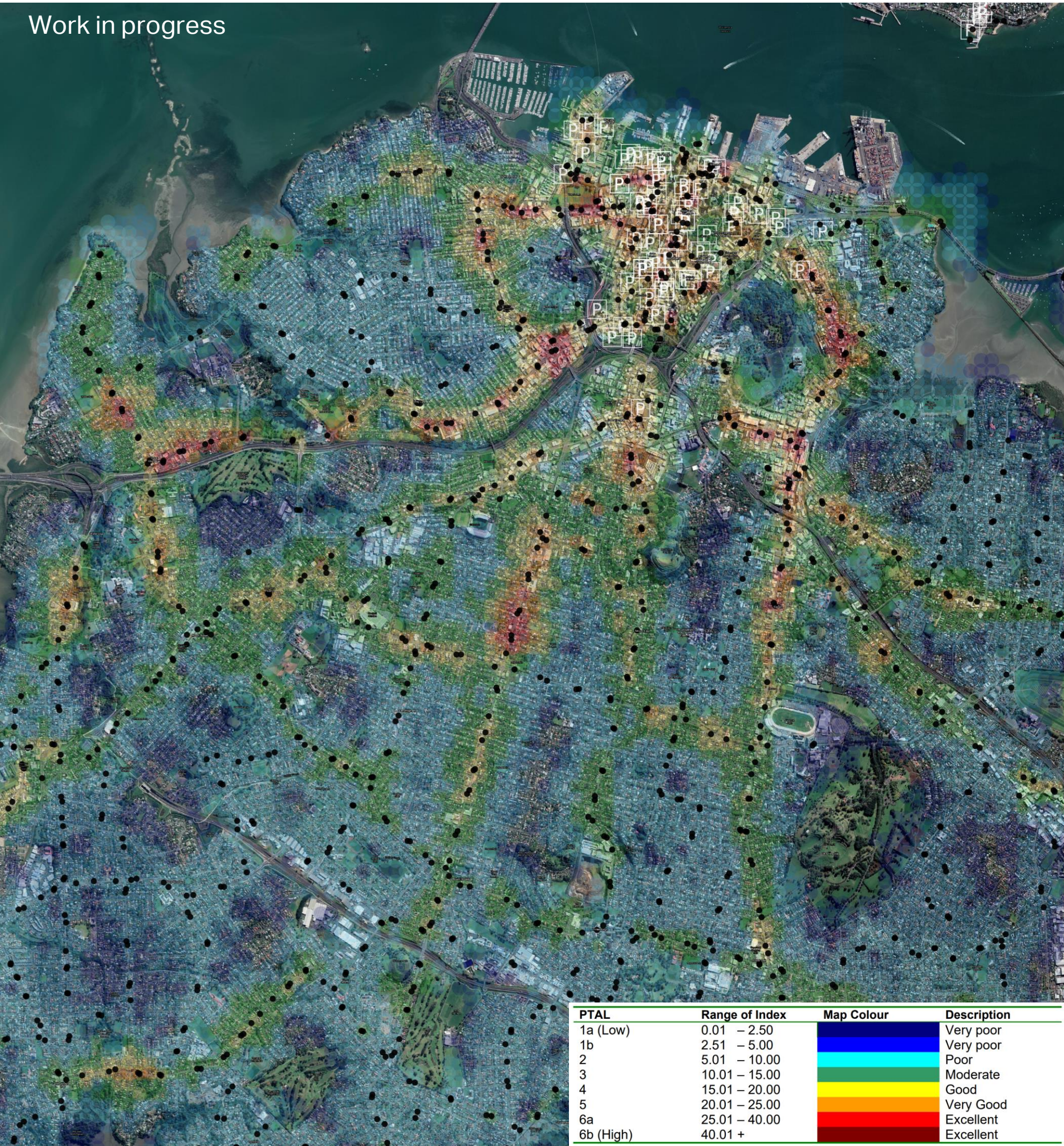


Public Transport Accessibility Level (PTAL) application to Auckland

Work in progress



Assumptions

- Origin: 100m x 100m grid
- 5 destinations at max from each origin

Variables

- Walking distance to PT nodes (<640m bus, <960m for rail)
- Average waiting time
- Frequency of PT service

● Public transport stops

P Car parks