

A photograph of a collaborative workspace. The table is covered with various items: several maps, some with colorful annotations, numerous yellow sticky notes, and several markers in blue, green, and purple. A person's hand is visible on the right side, wearing a black smartwatch. The overall scene suggests a planning or design session.

Innovating Streets for People:

The Emily Place & Tyler Street Experience So Far

Claire Davis
Specialist Urban Designer
Auckland Council

Tobie Pretorius
Transport Planner
Flow Transportation Specialists

Design of the Co-Design Process

- Grounding the project in a cultural context
- Connecting with what inspires and motivates each project team member to work on these projects



Workshop 1 - Project Intro / Context / Goals

- Guiding principles - big ideas
- Design responses - tangible, buildable outcomes
- Circulation / traffic / parking - issues and ideas



Workshop 2 - Drop In Session - Priorities

- Prioritising design responses
 - Traffic flow options



Online Survey for Workshop Participants



Online Survey via Council Have Your Say website



Design Brief





cityhop
CARS LIVE HERE
0800 2 CITYHOP

Emily Place

Issues raised by the community

- Vehicle dominated
- Excessive car parking and maneuvering
- Lack of pedestrian amenity
- Perceived safety issues in the Reserve

Opportunities

- Test community co-design process
- Remove car parking
- Test viability of public space
- Test public space typologies
- Test traffic calming strategies
- Recognise cultural history of site

Budget - \$223,100







Tyler Street

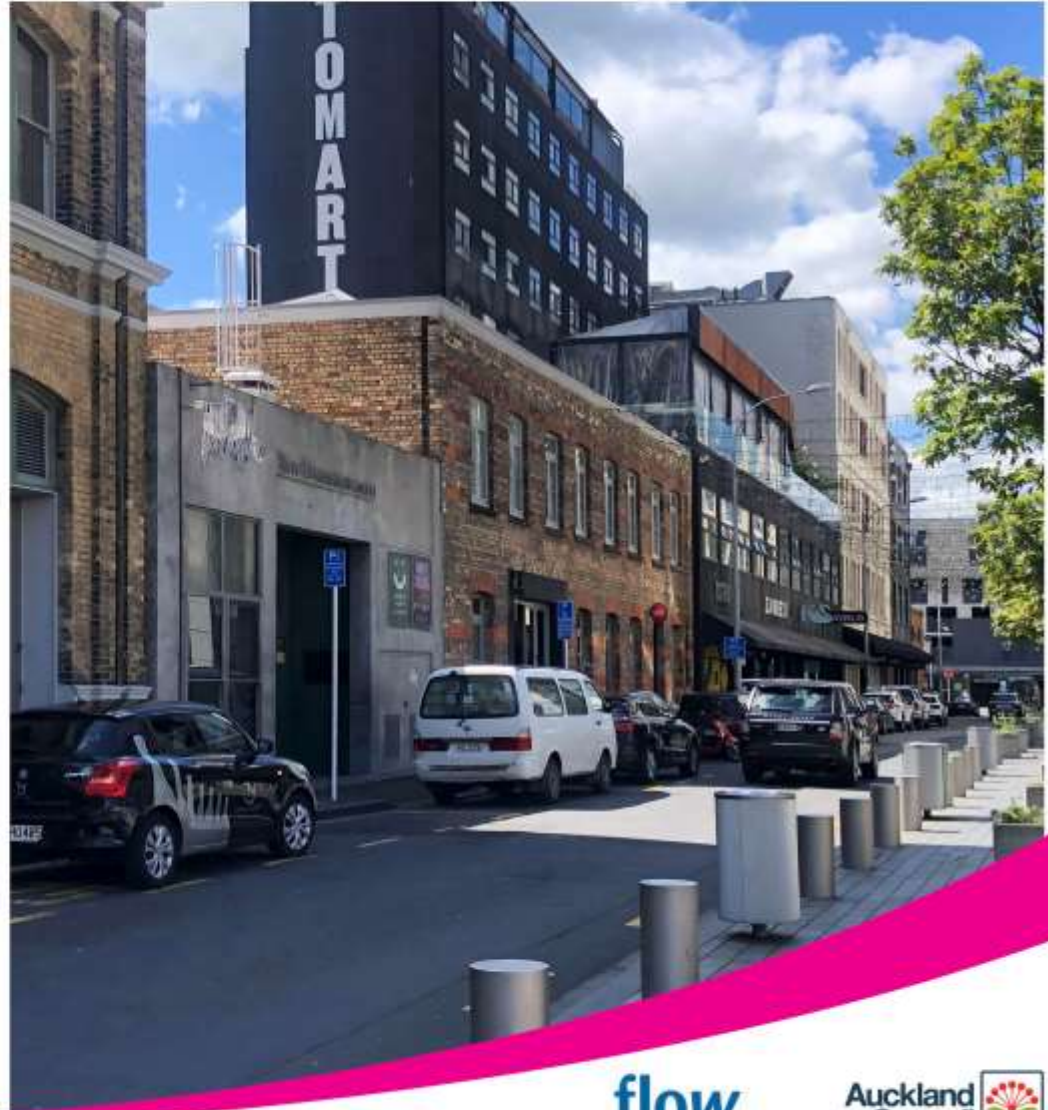
Issues raised by the community

- Poor pedestrian environment
- Narrow footpaths
- Excessive parking

Opportunities

- Test community co-design process
- Test viability of street pedestrianisation
- Test viability of street as outdoor dining space
- Test alternative loading activities
- Improve walking connections

Budget - \$159,850



You said...



You said...



URGENT ACTION

LISA
AUCKLAND COUNCIL ARE ABOUT TO CLOSE EMILY PLACE
AND REMOVE MOST, IF NOT ALL, ON STREET PARKING I.E.
YOU WILL NO LONGER BE ABLE TO PARK HERE.

IF YOU DISAGREE WITH THIS, I URGE YOU TO HAVE YOUR SAY
AT AUCKLAND COUNCIL'S WEBSITE - GOOGLE
"AUCKLAND COUNCIL EMILY PLACE"

AND COMPLETE THE SURVEY - **the survey closes at the end
of January.**

or <https://ahaveyoursay.aucklandcouncil.govt.nz/emily-place>

See over for more information.

LISA

Emily Place - Existing



Concept Development Through Co-Design



- ① Speed table
 - ② Footpath extension - flush, asphalt
 - ③ Road narrowing ground graphic
 - ④ Car share parks x 2
 - ⑤ Pocket park with seating - artificial turf
 - ⑥ Scooter parking
 - ⑦ Central plaza
 - ⑧ Bike racks
 - ⑨ Reserve extension with seating - artificial turf
 - ⑩ Footpath extension, existing levels
 - ⑪ Gateway
 - ⑫ Footpath extension - existing levels
 - Road art - cultural stencil, design tbc
 - Ground art / public realm - cultural stencil, design tbc
 - Artificial turf
 - Road
 - Car parking / loading
- Delineating Materials Options**
 Concrete cubes
 Planter boxes
 Concrete cycleway se...

Implementation Plan - Post Feedback on Concept



- ① Speed table
- ② Footpath extension - flush, asphalt
- ③ Road narrowing ground graphic, ground art tbc
- ④ Car share parks x 2
- ⑤ Pocket park with seating - artificial turf
- ⑥ Bike racks x 5
- ⑦ Central plaza, ground art tbc
- ⑧ Reserve extension with seating - artificial turf

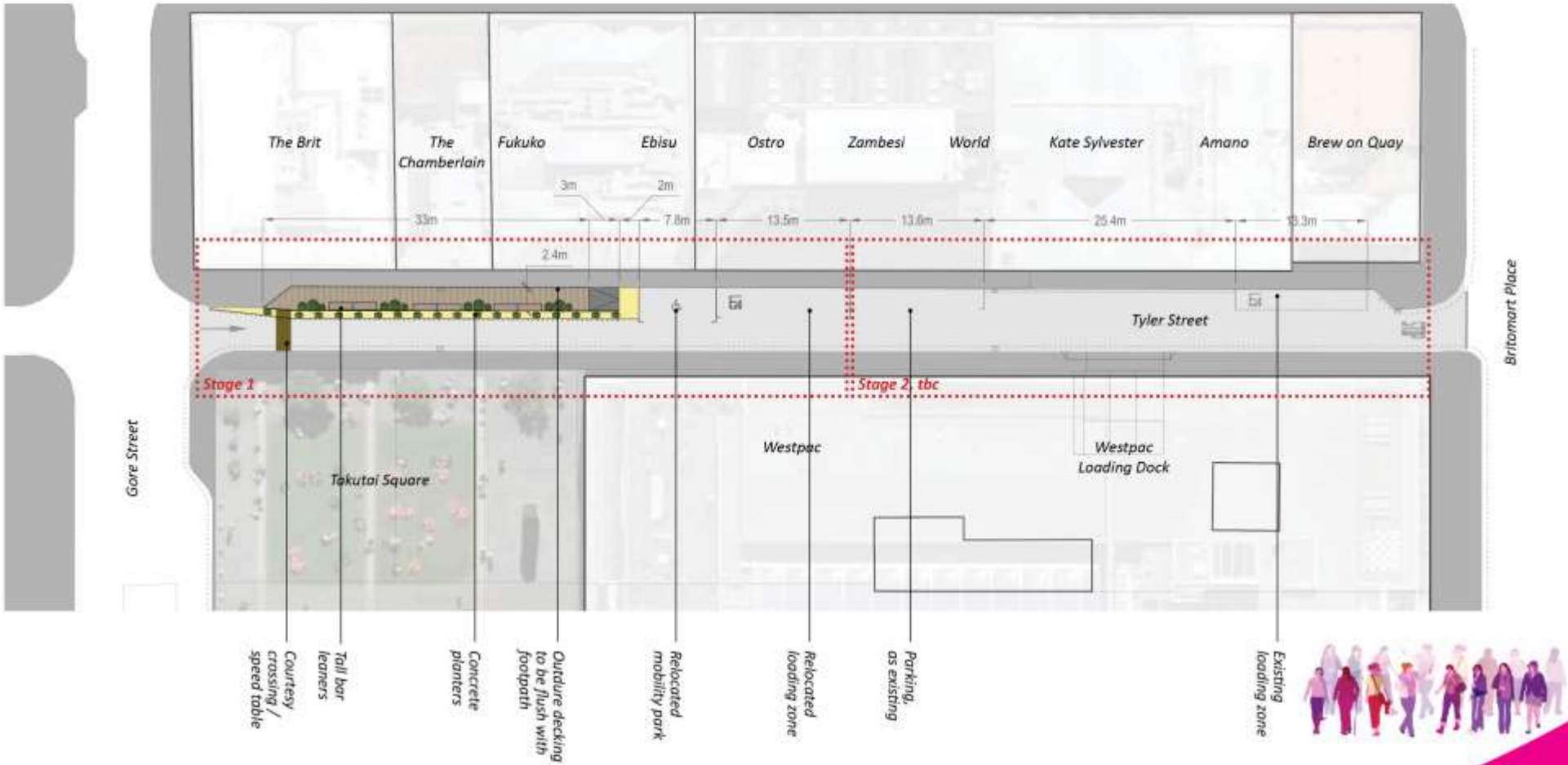
- Road art - cultural stencil, design tbc
- Ground art / public realm - cultural stencil by artist Graham Tipene, design tbc
- Artificial turf
- Road
- Car parking / loading

Delimiting Materials Options
 Timber planter boxes
 Concrete cycleway separator

Concept Development Through Co-Design



Implementation Plan - Post Feedback on Concept



Access for Everyone

- A4E strategic plan used to set the scene for the co-design sessions
- The two sites in relation to the proposed Zero emissions area (ZEA)
- The aim of the ZEA is to reduce the impacts of road transport on city centre air quality



Conclusion / Lessons Learned

- A really interesting and valuable experience in delivering a truly transparent engagement process
- Be prepared for big ideas to be paired back through rounds of engagement / co-design - this can feel disappointing but necessary if the public is to fully trust the process
- There will always be scepticism around project delivery and process
- The negative voices are much louder than the positive ones so try not to be disheartened!
- Keep an eye out for changes on the street or follow our progress online

<https://www.aucklandcouncil.govt.nz/have-your-say>

Thank You!

Claire Davis
Specialist Urban Designer
Auckland Council

Tobie Pretorius
Transport Planner
Flow Transportation Specialists

Emily



SCAN ME

Tyler



SCAN ME