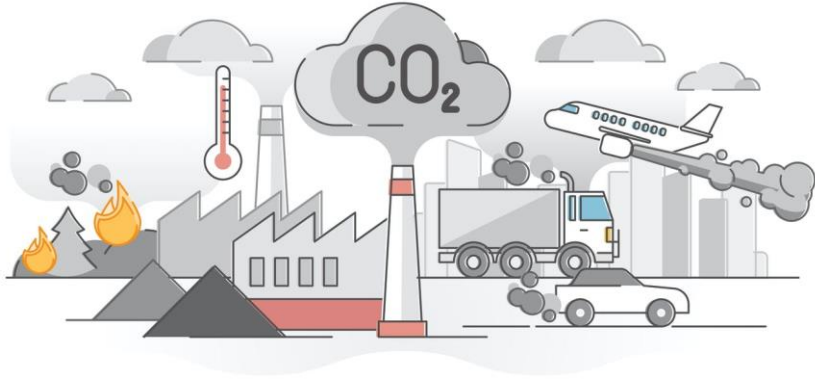


Transport for climate: ADAPT & DECARBONISE

Becky Tuke / May 2021

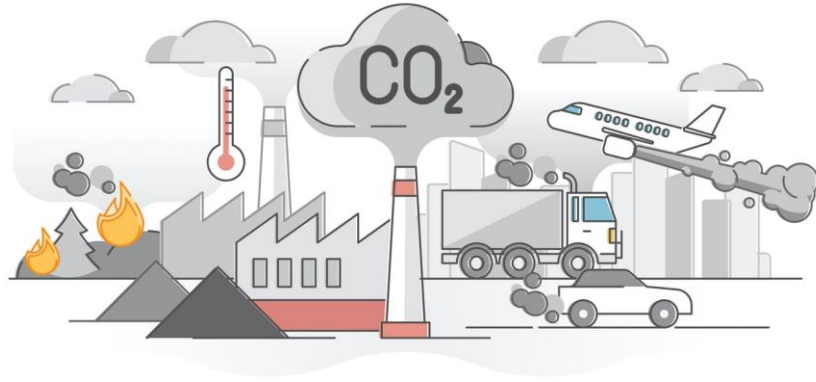
Addressing the causes



Mitigation

Reducing emissions

Addressing the causes & effects



Mitigation

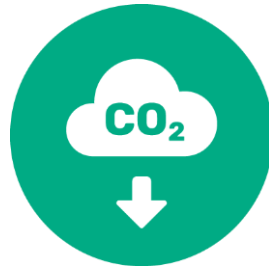
Reducing emissions



Adaptation

Becoming climate resilient

Addressing the causes & effects



Mitigation

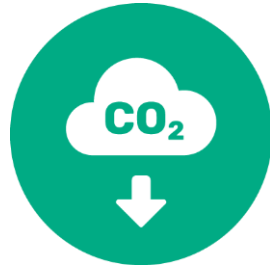
Reducing emissions






Adaptation

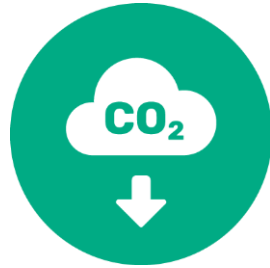
Becoming climate resilient

Policies & commitments



-  Limiting temp rise to 2°C
-  Net zero GHG emissions by 2050
-  Net zero GHG emissions by 2030

Policies & commitments



Limiting temp rise to 2°C



Net zero GHG emissions by 2050



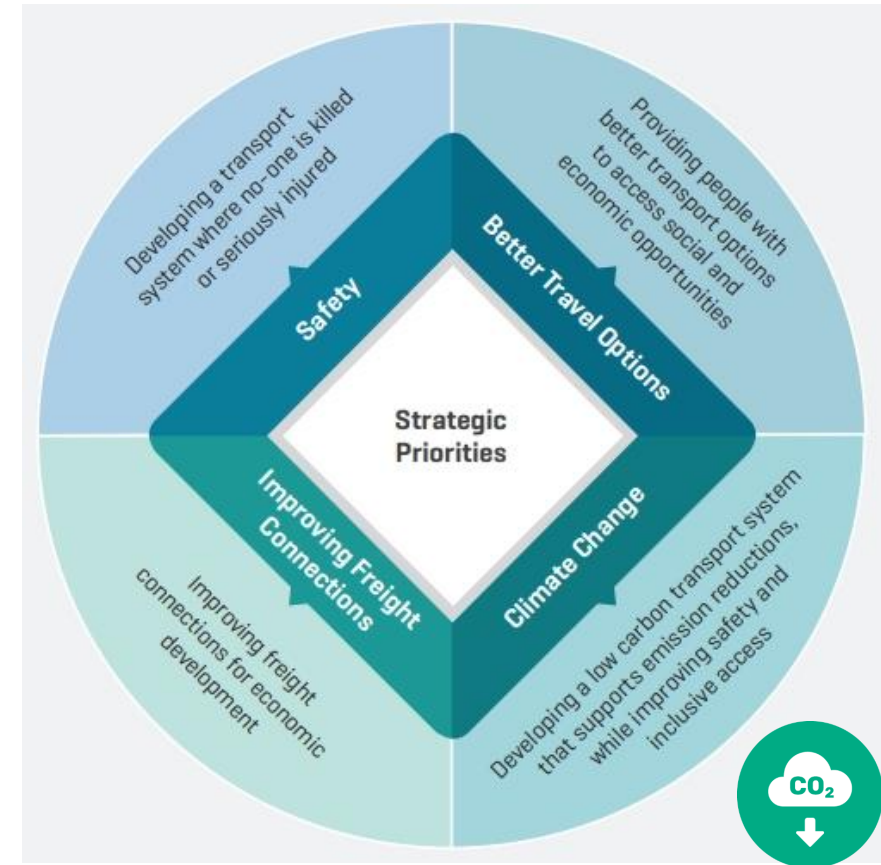
Net zero GHG emissions by 2030



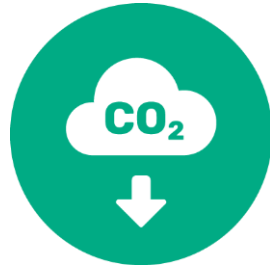
Adapt to the adverse effects of climate change and foster climate resilience...

Resilience and adaptation of NZ's economy, society and environment to climate change increases

Transport policies



Transport initiatives & actions



- Reduce VKT
- Increase sustainable modes
- More efficient vehicle use
- Lower emission vehicles



- Network contingencies
- Risk assessments
- Hazard management
- Emergency response planning

Mitigation and adaptation are often treated differently and separately in transport

Te Ara Tupua



Evacuation hīkoi

ARE YOU TSUNAMI READY?
Practise your tsunami evacuation
hīkoi to high ground or inland

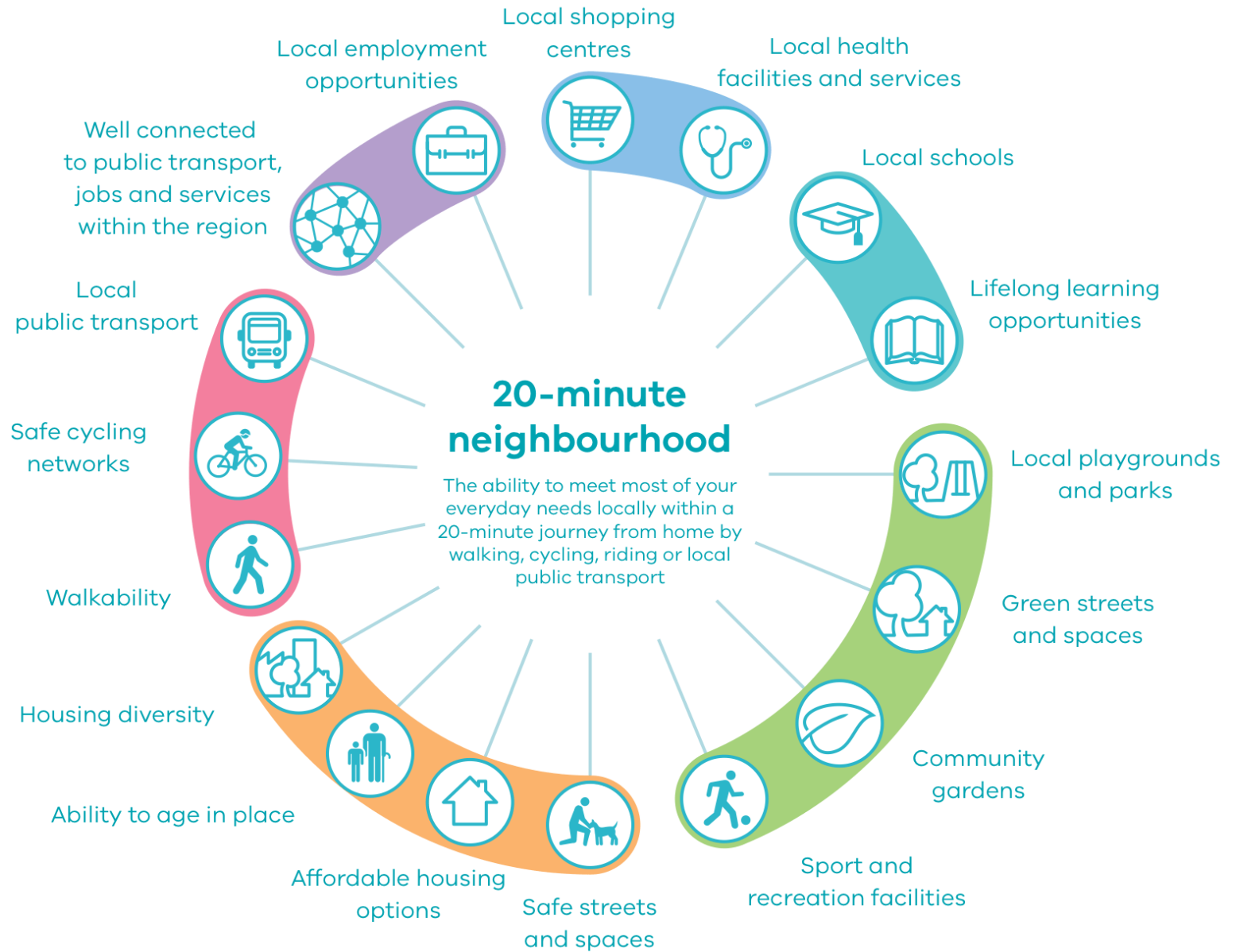
SAVE THE DATE

8 - 14 March

Tsunami Hīkoi
Week



20 minute neighbourhood



A new & more resilient road



EV car share scheme



- **Can all our initiatives help both mitigate and adapt to climate change?**
- **How can we weigh up mitigation and adaption initiatives?**
- **Where should the line be drawn?**



Thank you!

Contact

Becky Tuke

Senior Transportation
Engineer

www.abley.com

rebecca.tuke@abley.com

