

Call for cleaner air

Facts*



2,250 premature deaths

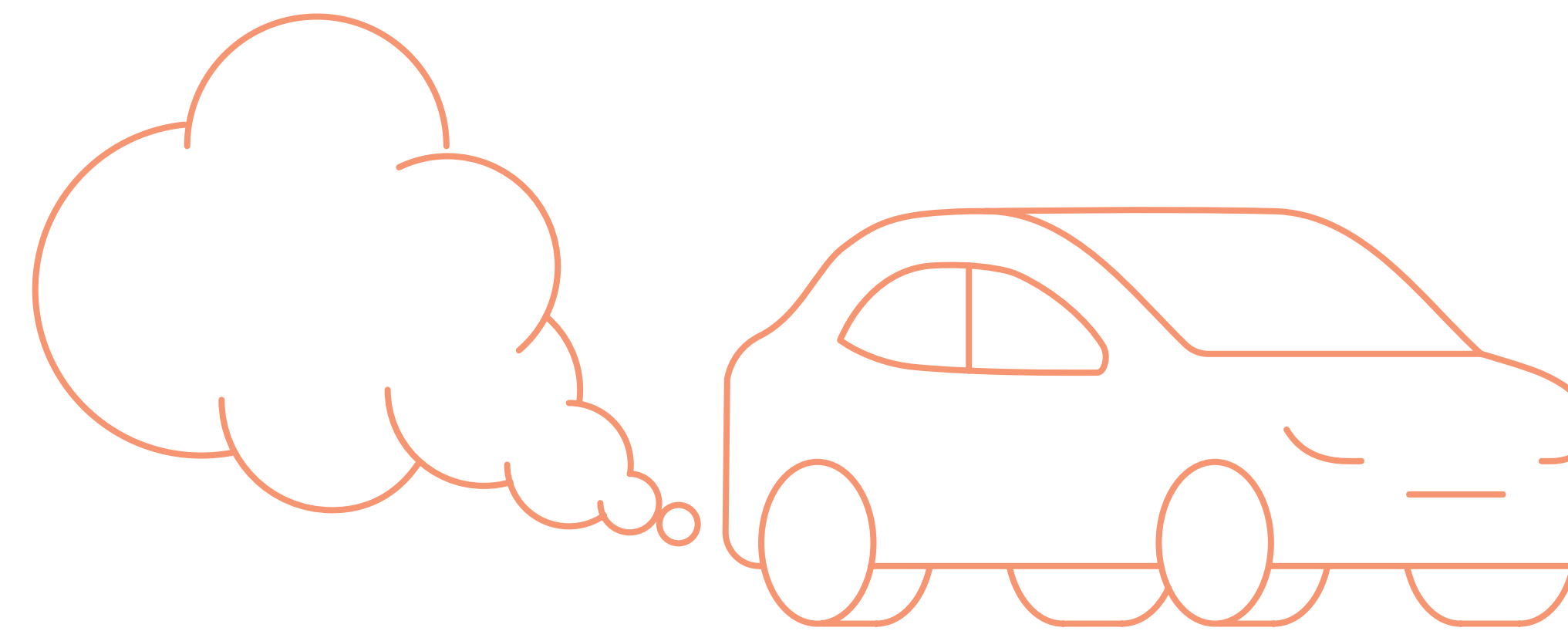


330,340 restricted activity days

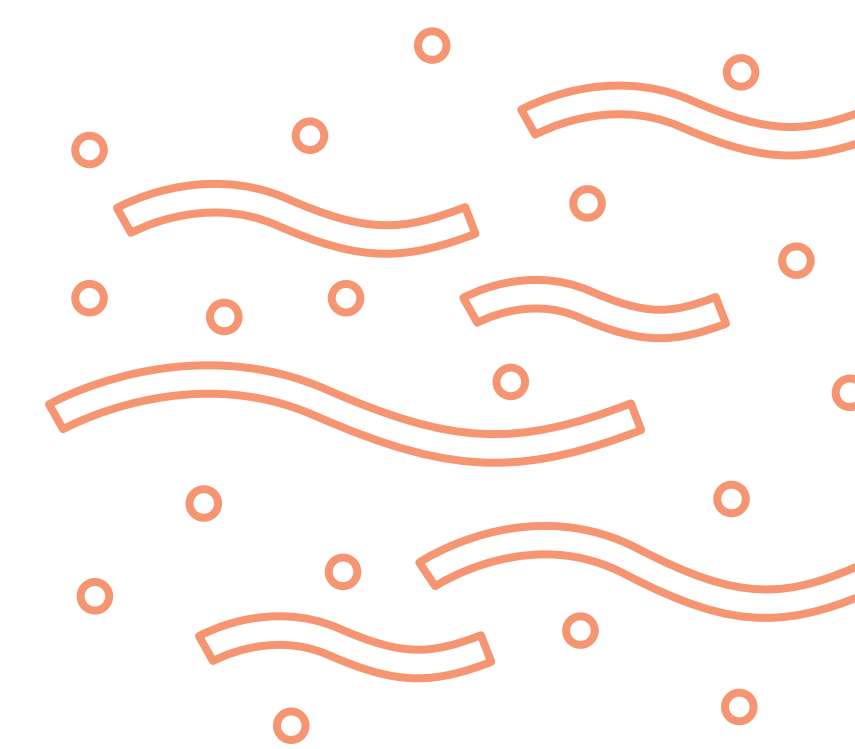


\$15.6 billion social

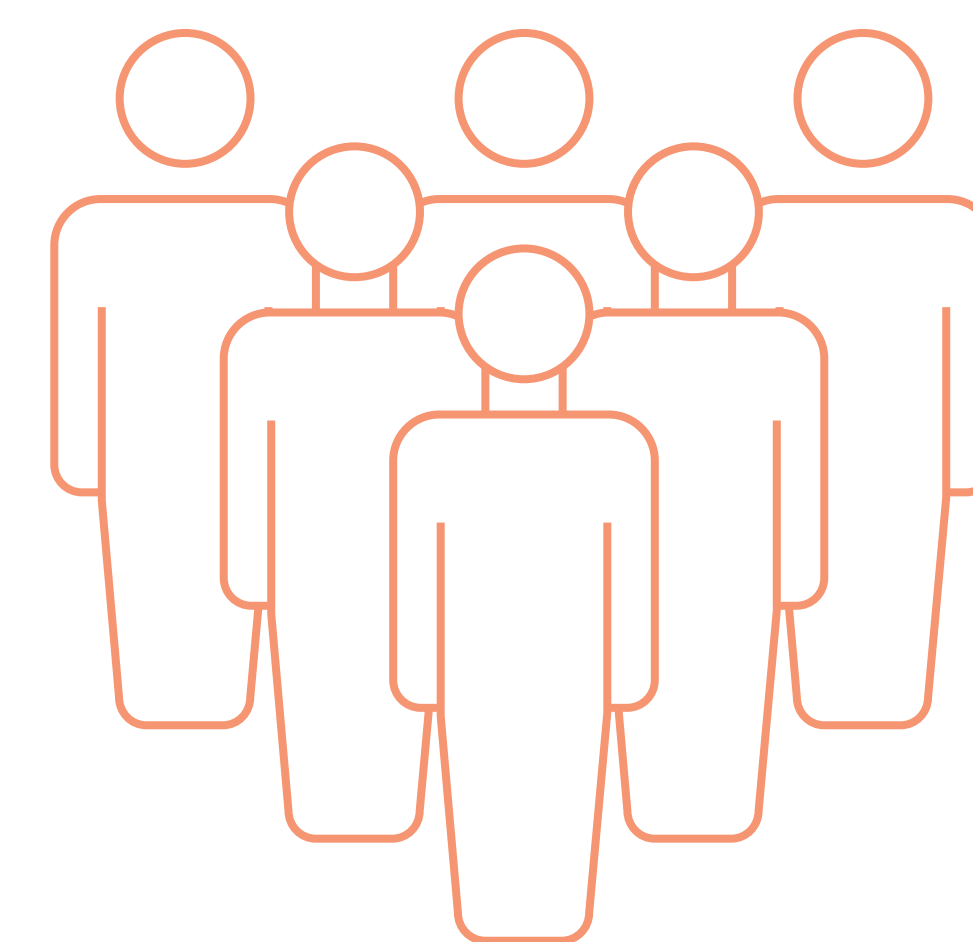
Challenges



In 2016 17% of particulate matter air pollution came from cars and 100% of nitrogen dioxide came from cars

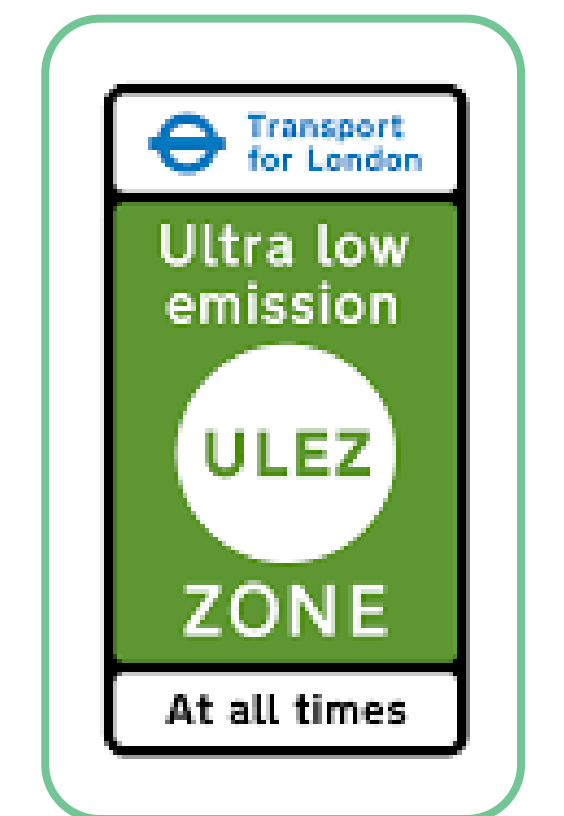


Recent World Health Organisation research indicates threat to health even at low levels



Our population is set to grow from 5 million to 6 million by 2033 putting a greater strain on our transport services

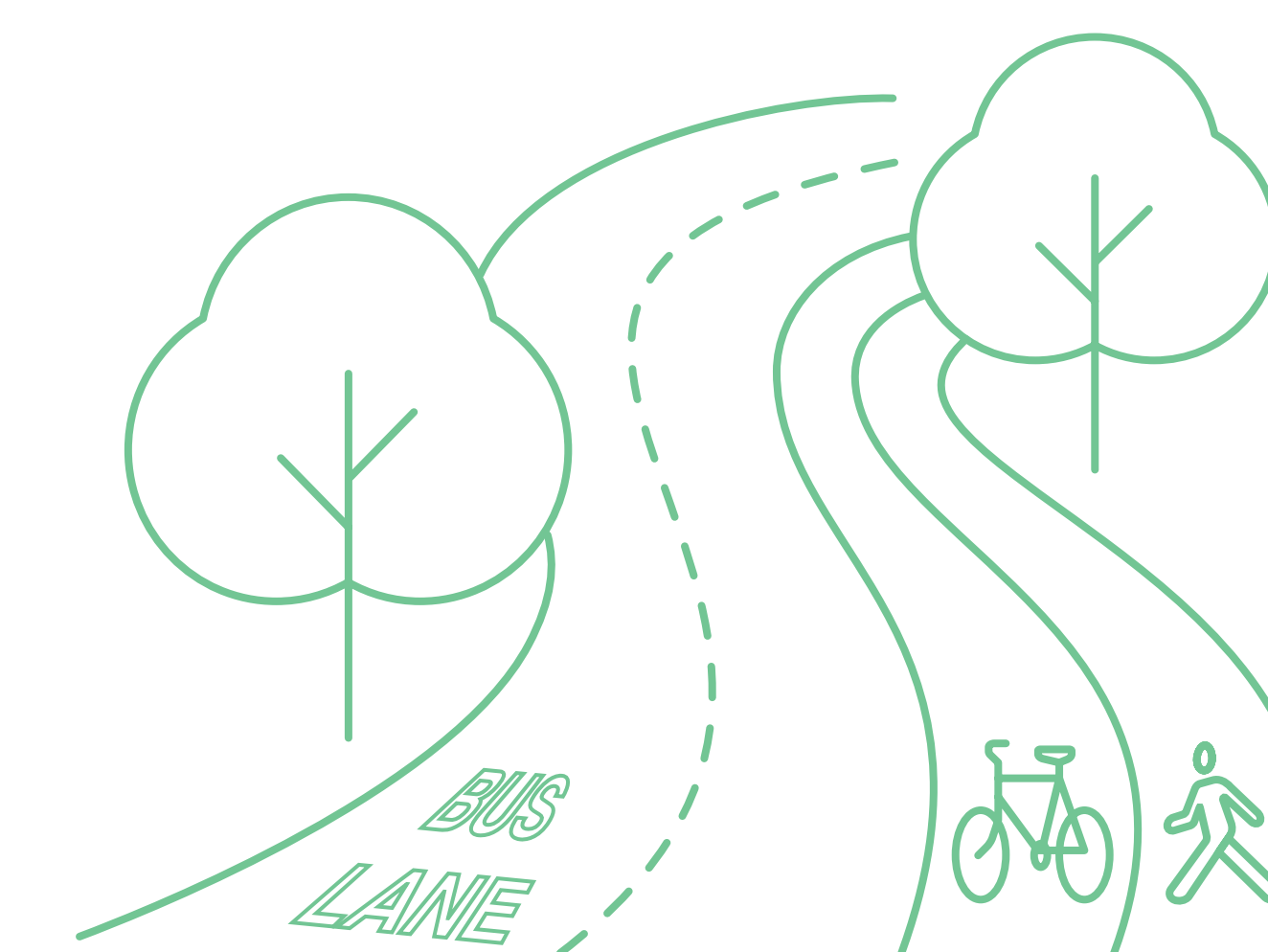
Solutions



Implementing policies that support clean air and deliver on other co-benefits



Co-ordination between local, regional and central government to prioritise and invest in measures to improve air quality



Prioritising green infrastructure to encourage active transport

*Annual impacts of air pollution
Note: Not Waka Kotahi policy