

Living Corridors

Transportation Group Conference 2023



tasman
district council

Te Kaunihera o
te tai o Aorere

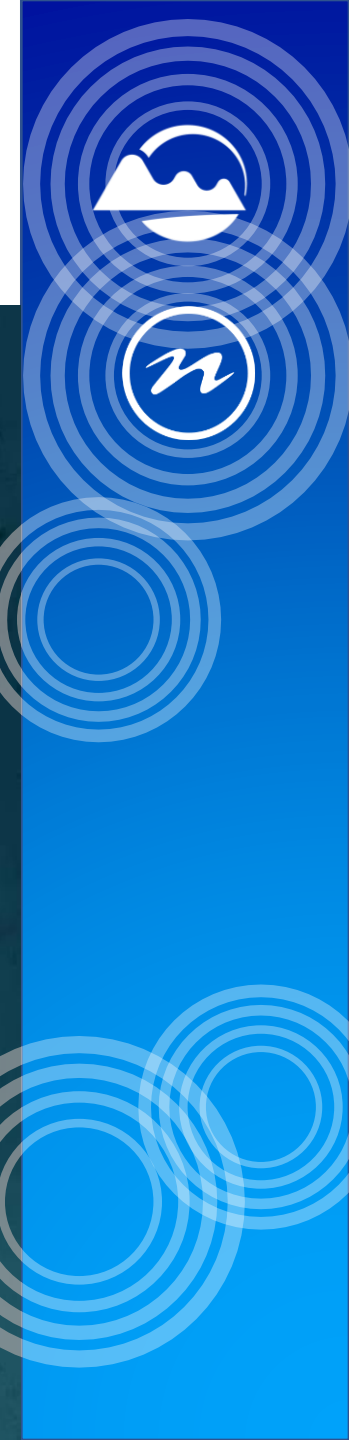
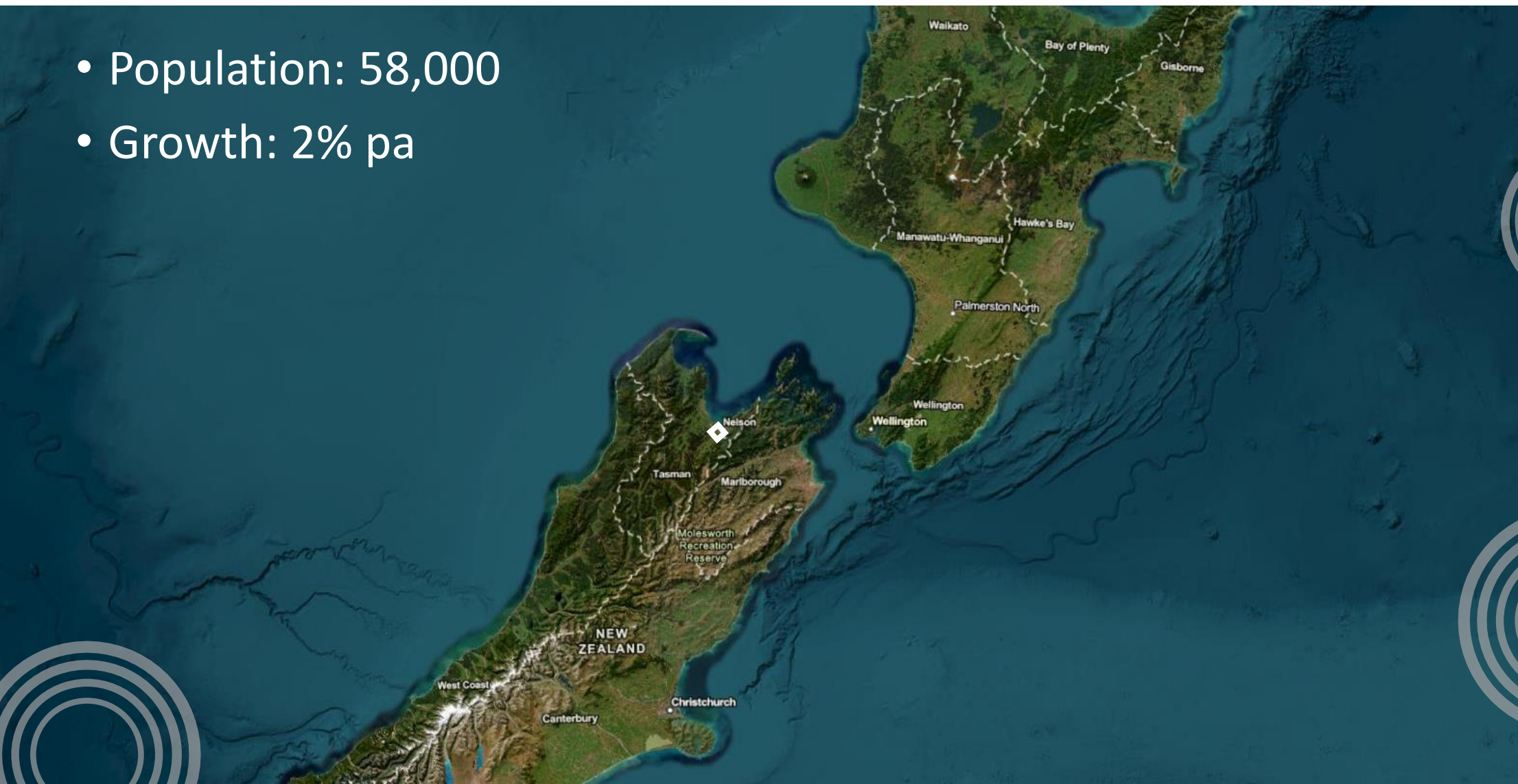


Nelson
City Council

Te Kaunihera o
Whakatū

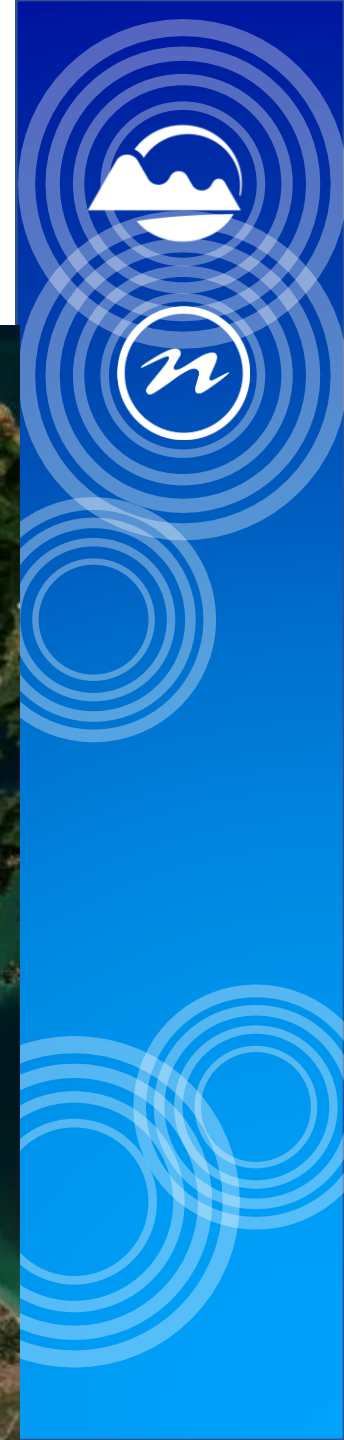
Tasman

- Population: 58,000
- Growth: 2% pa

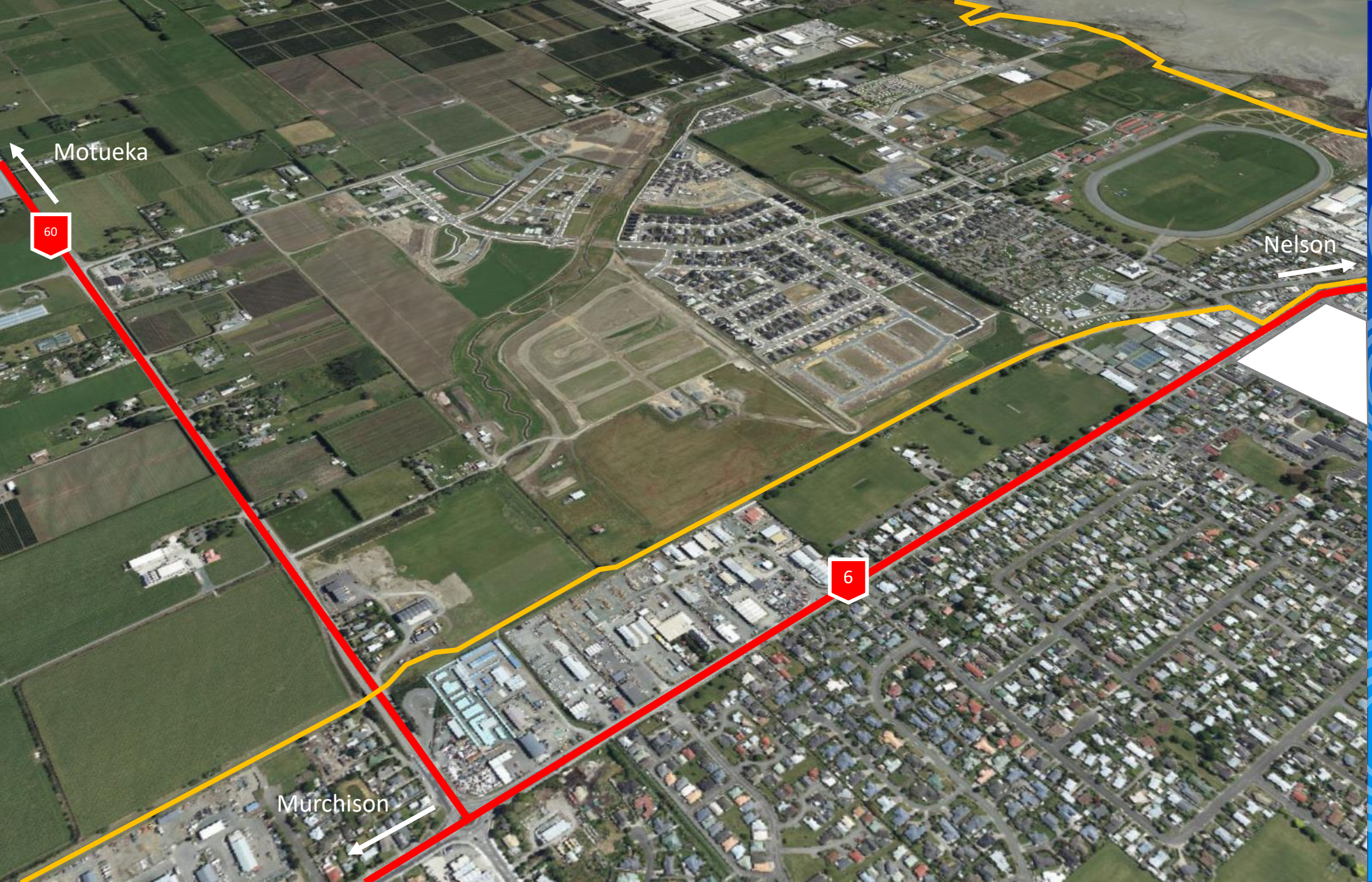


Richmond

- Population: 18,000









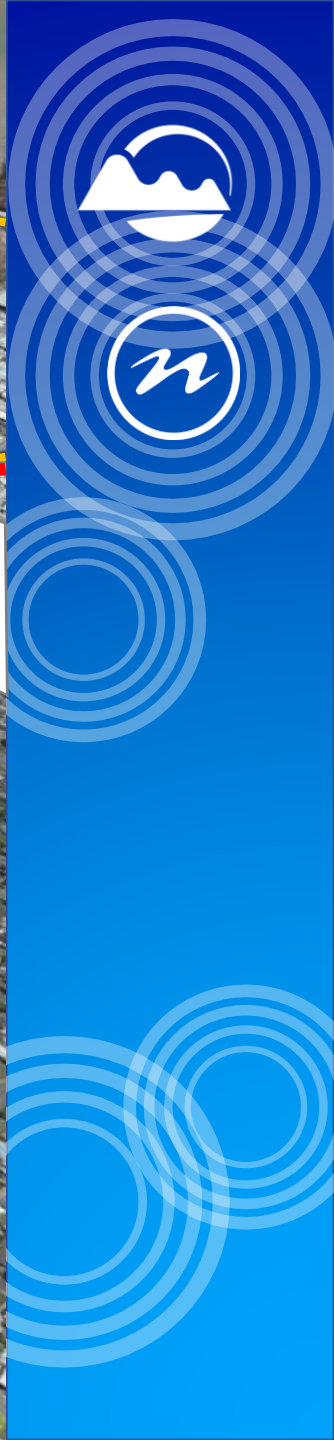
Light Industrial

Mixed business

Mixed business

Residential

60



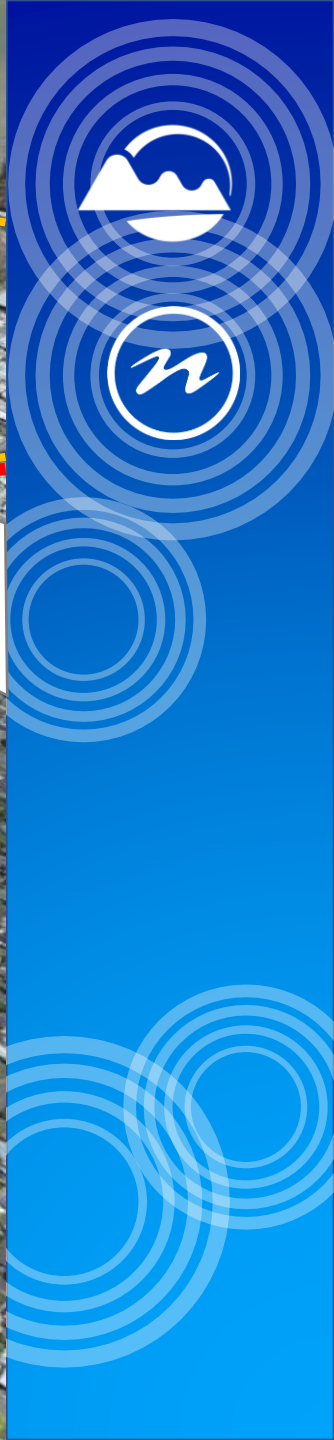


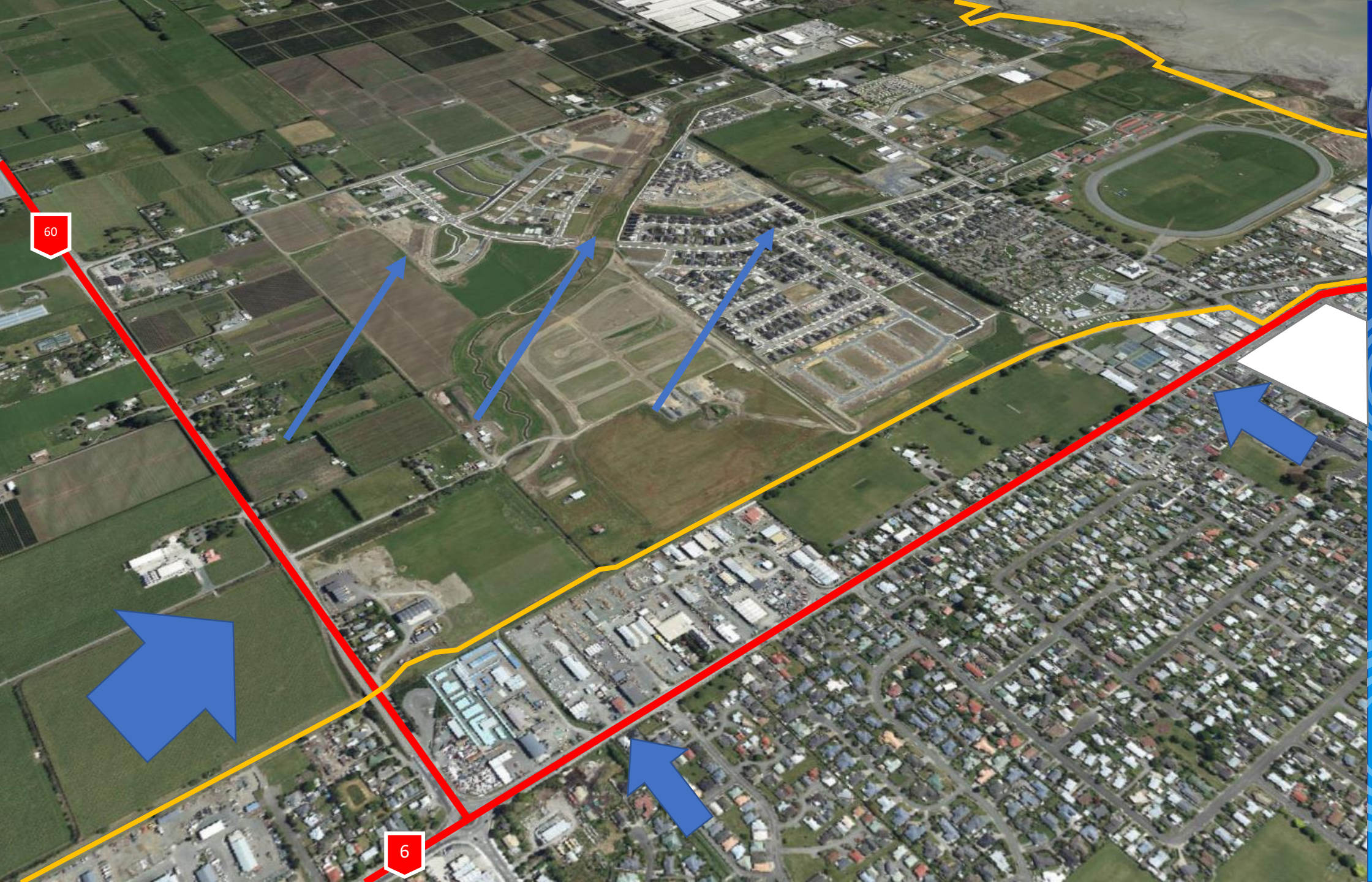
Light
Industrial

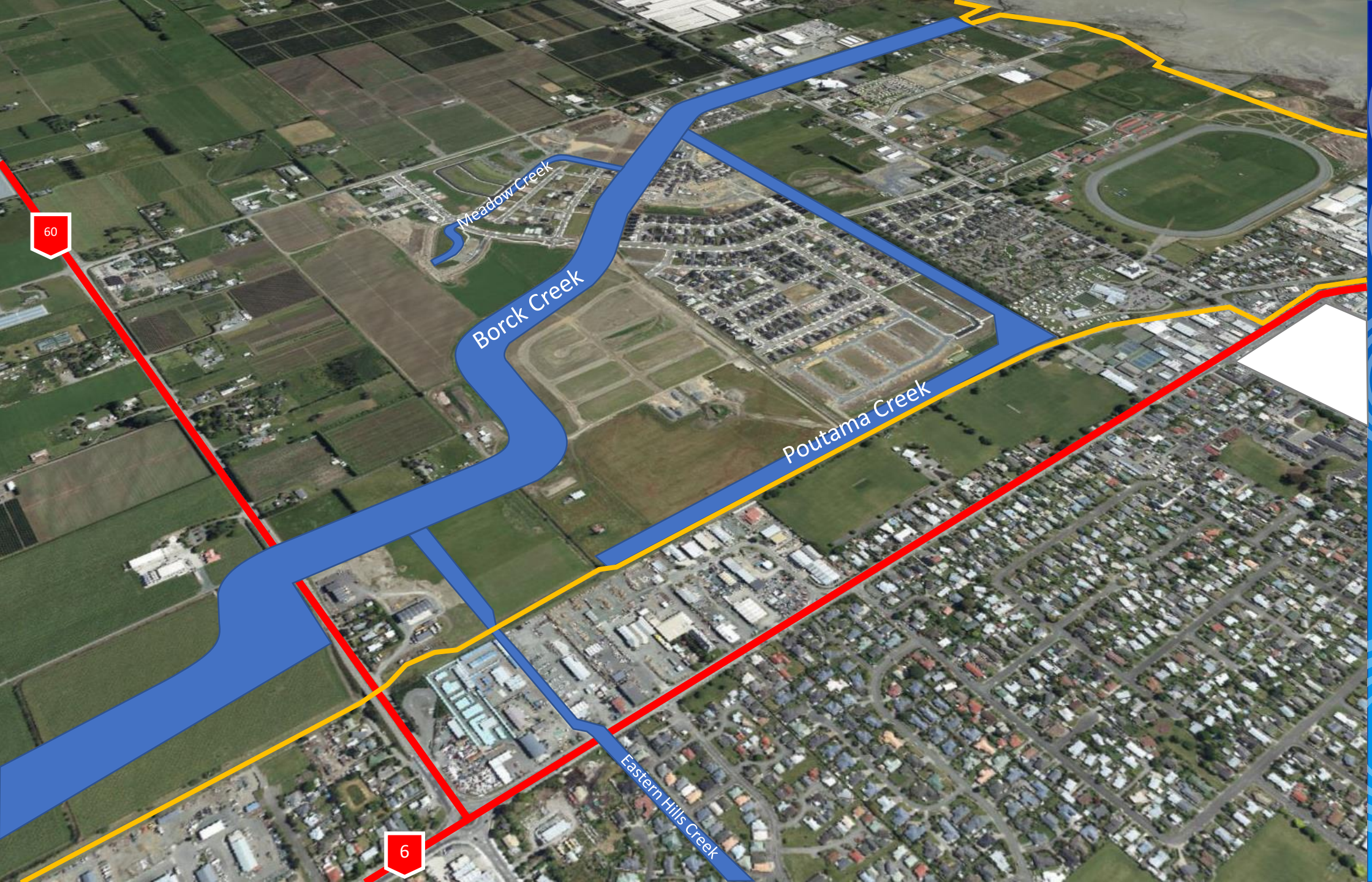
Mixed
business

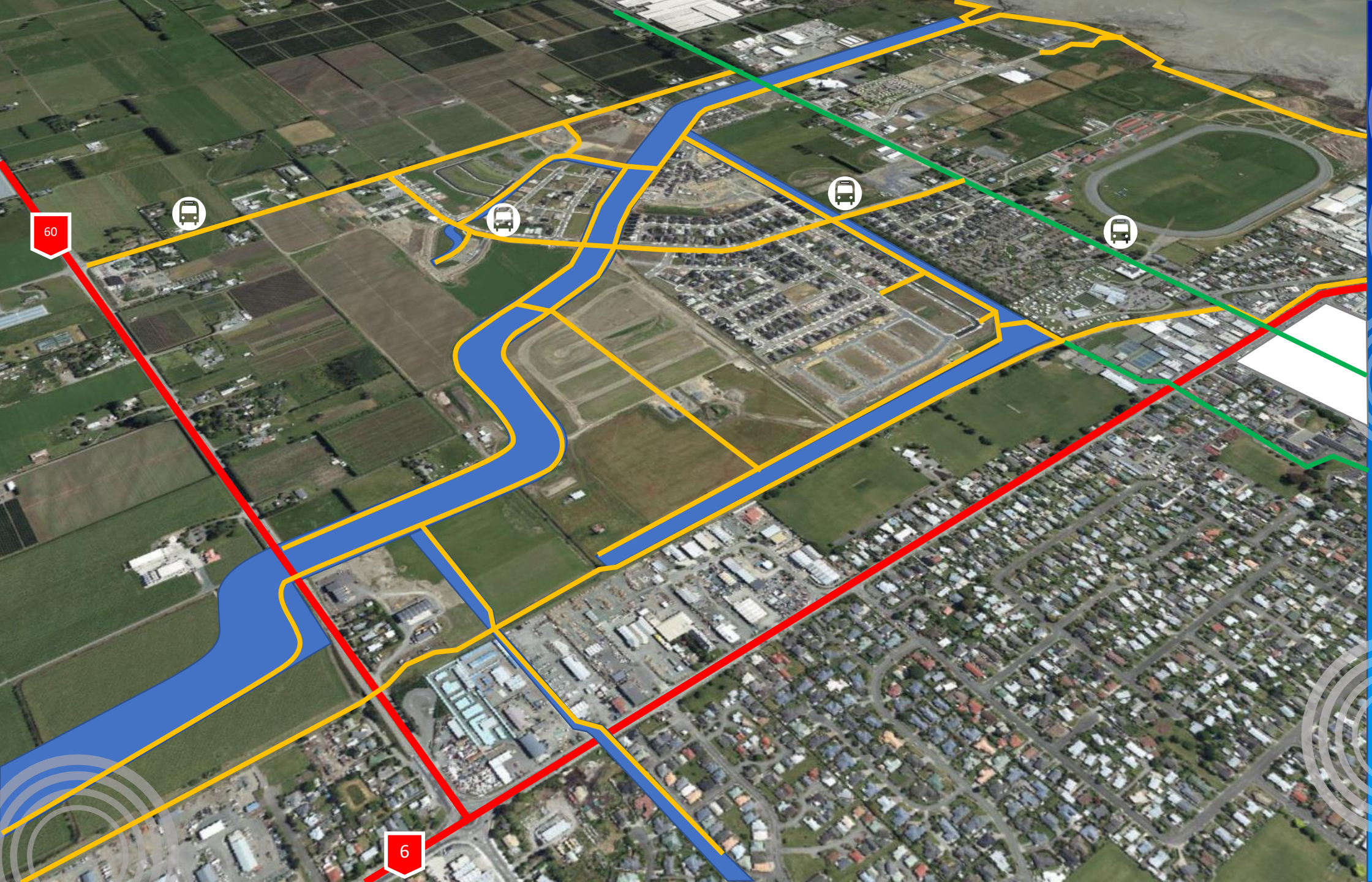
Residential

Mixed
business

































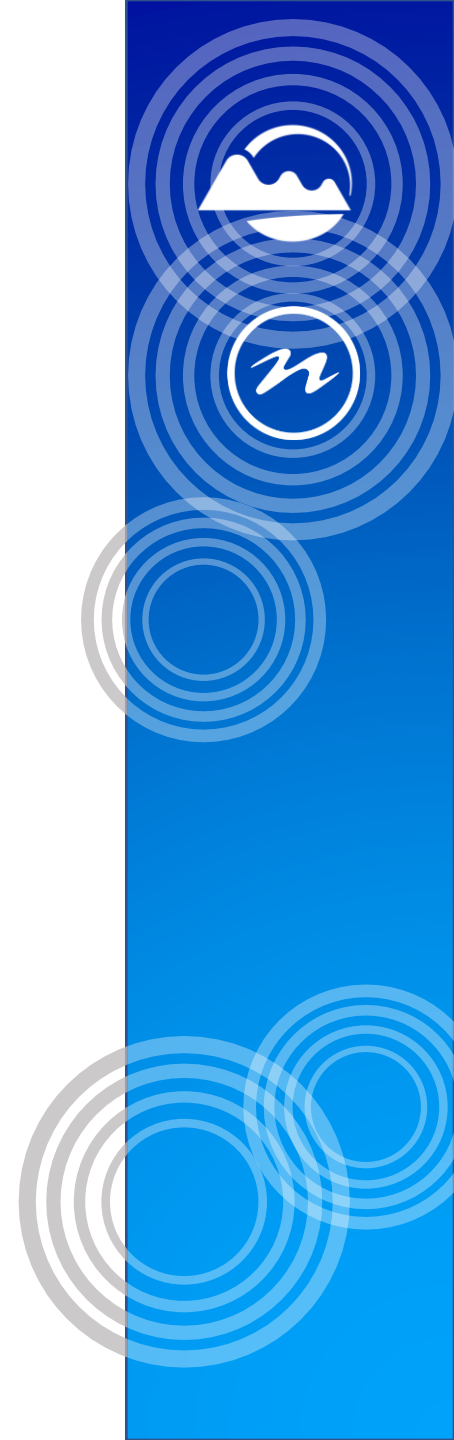






Ongoing work

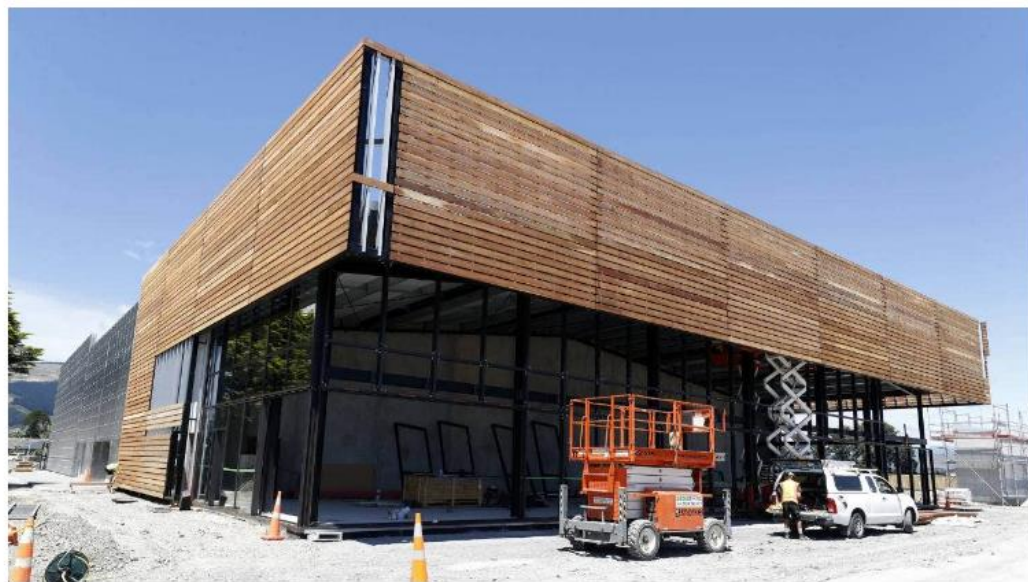
- Completion of the stormwater corridors
- Shared path network
- New vehicle bridges with underpasses
- Plantings
- Park furniture
- Wayfinding
- Interpretation panels
- Art



Evaluation

The rise and rise of Richmond, Tasman's fast-growing settlement.

Cherie Sivignon · 05:00, Jan 05 2022



MARTIN DE RUYTER/STUFF

The main building in the Berryfields Crossing development at Richmond West has Silky Otter Cinemas as the anchor tenant. The development will also have a village green.

Government buys land for new school at Richmond West.

Cherie Sivignon · 12:55, Oct 09 2020



SUPPLIED

The site (green area beside the creek) in The Meadows development at Richmond West that has been bought by the Government for a new school.

Evaluation

Community delighted by creek's eels, but respect and care advised

Frances Chin · 05:00, Nov 03 2022



PRASHANTI LOVEGROVE

Residents love the shortfin eels living in Borck Creek, but Tasman District Council advises people to treat them with respect.

Retirement village plan as Richmond becomes 'destination for retirees'

Cherie Sivignon · 08:00, Jun 24 2017

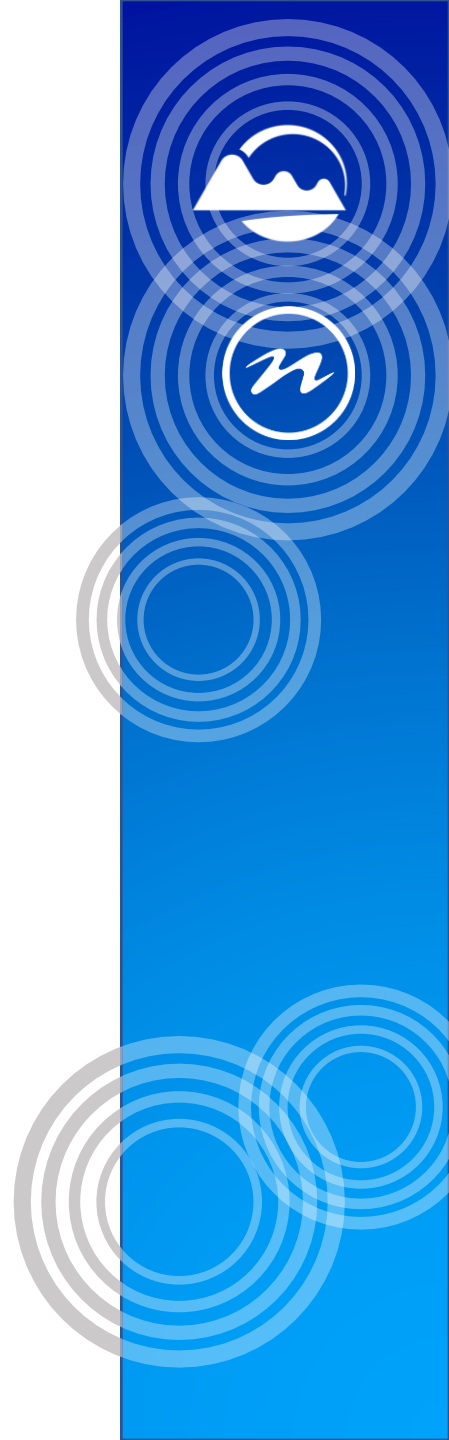


A preliminary design of a proposed retirement village by Arvida Group on the outskirts of Richmond.



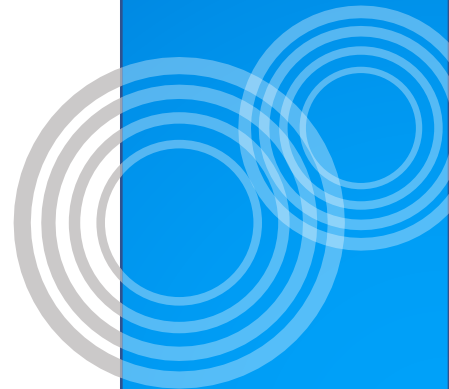
What worked well

- Building relationships with developers
- Using developers to undertake sections of work
- Working toward outcomes but being flexible
- Cross-council team
- Councillors catching the vision and backing staff



Improvement needed

- An overarching spacial plan
- Housing density requirements
- Secure the land early (preferably before rezoning)
- Make stormwater corridors wide enough (and then add more)
- Have engineering requirements that lead to the right outcomes





A vertical blue sidebar on the right side of the image. It features several circular icons: a white mountain range icon at the top, a white stylized 'N' logo below it, and several sets of concentric white circles at the bottom. The background of the sidebar is a solid blue color.

Thank you

