

Making Taupō a People Centric Town



GREAT LAKE TAUPŌ
Taupō District Council

Turning a long-term vision into reality



Objectives



Spaces that provides flexibility for activation and events while maintaining street functionality



Blurring the boundaries and providing connection between the Town Centre and both the Lake front and Tongariro Domain



Still allowing access to all areas with all modes to maintain servicing and property access

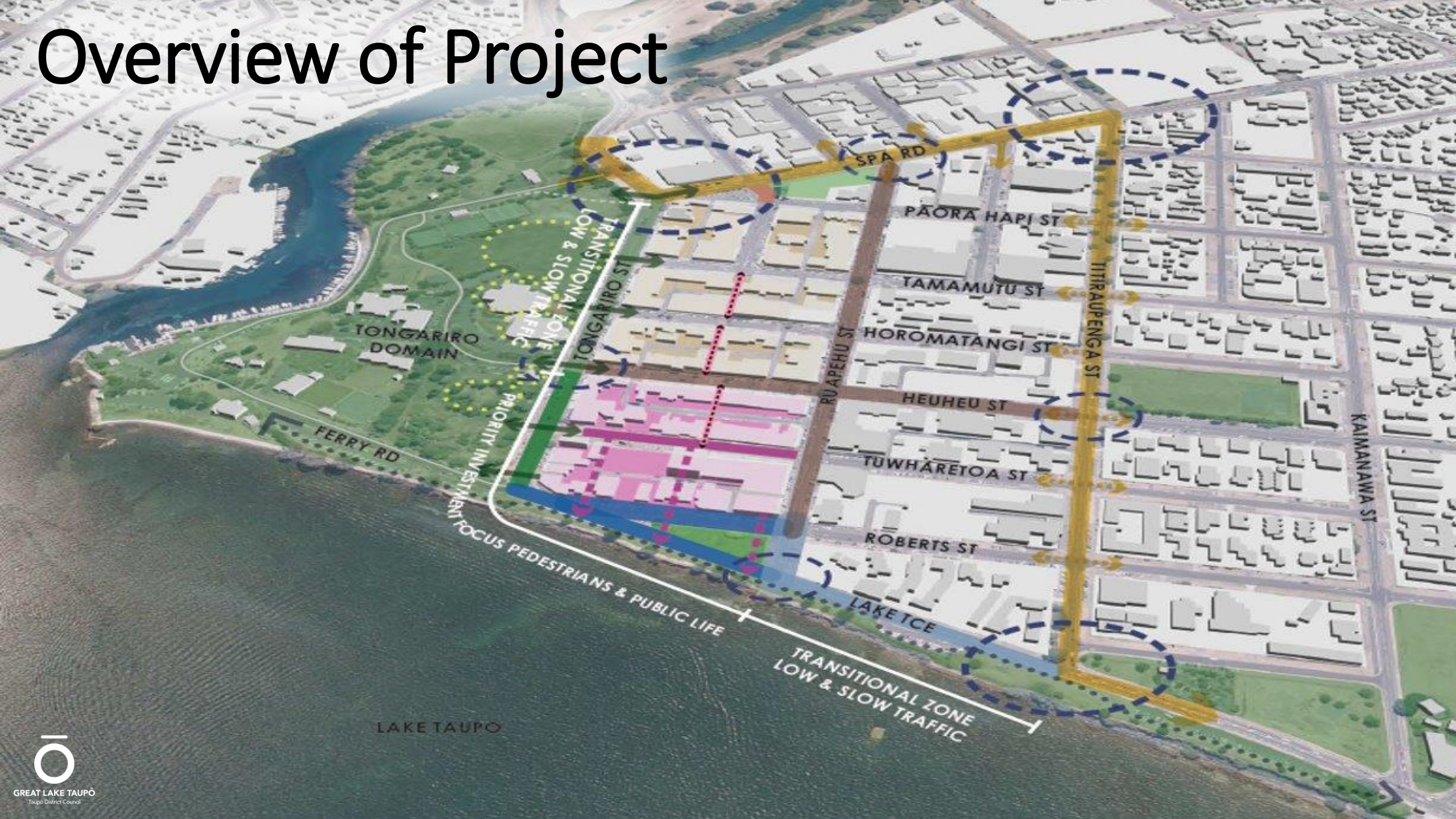


Creation of more outdoor dining and street trading opportunities. Creating well designed space acts as a catalyse for private development



Expand lakefront prescient to create a destination for people that is distinctive and world class in quality and offering

Overview of Project



LAKE TAUPO

Key Project Challenges

- Designing while building
- Pedestrian Mall Consultation
- Parking and Truck Access for Businesses
- Cliff edge treatment – Safety and Erosion
- CIP funding Constraints
- Covid – supply issues and Lockdowns
- Change Management



Tongariro Street Key Problems

- Four lane road a significant barrier as pedestrian.
- Disconnected Shopping/dinning areas from public spaces
- No cycling connection from The Great Lake Shared Path to the North

Tongariro Street

Before



After



After



After

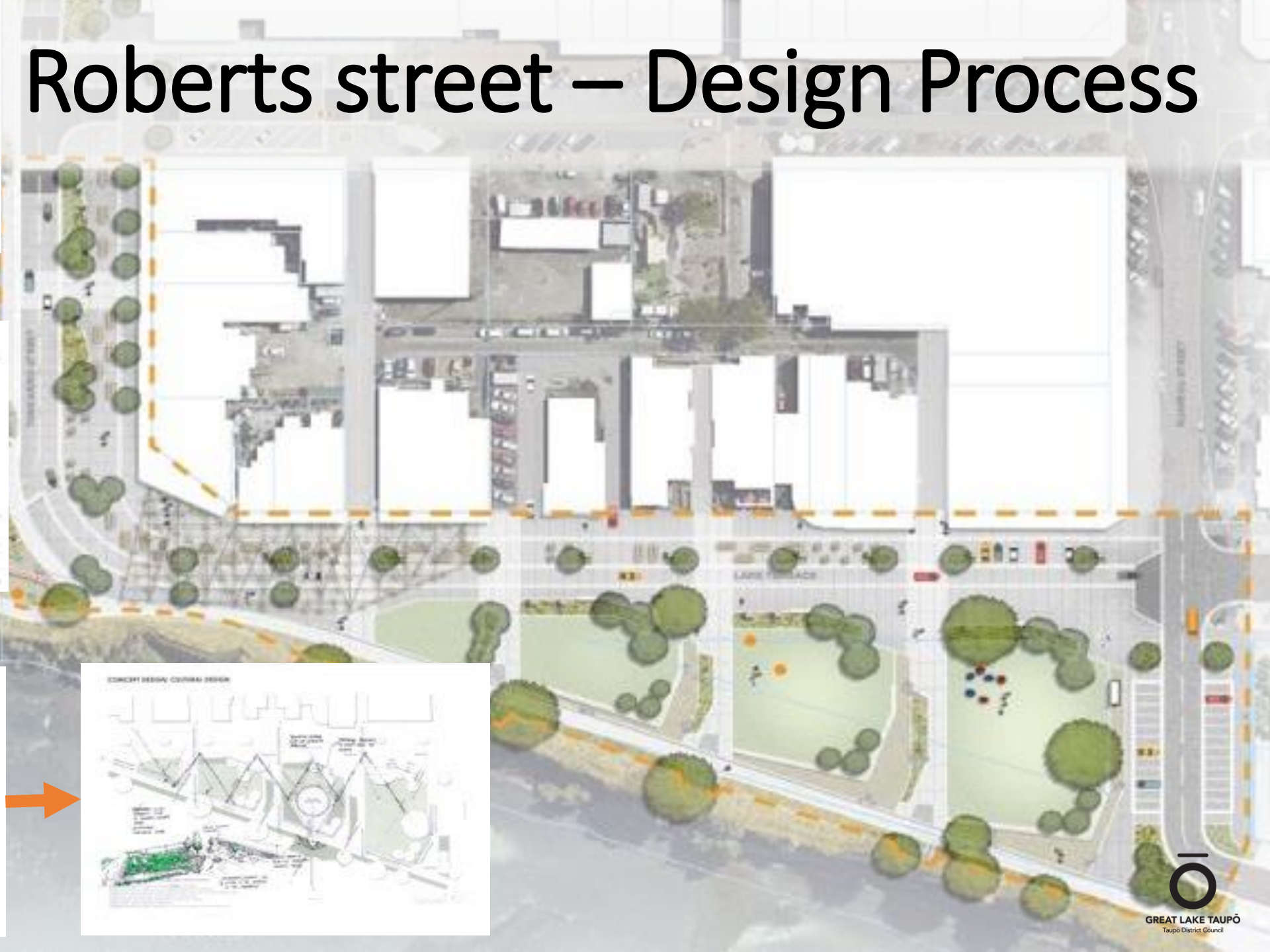


Roberts Street Key Problems



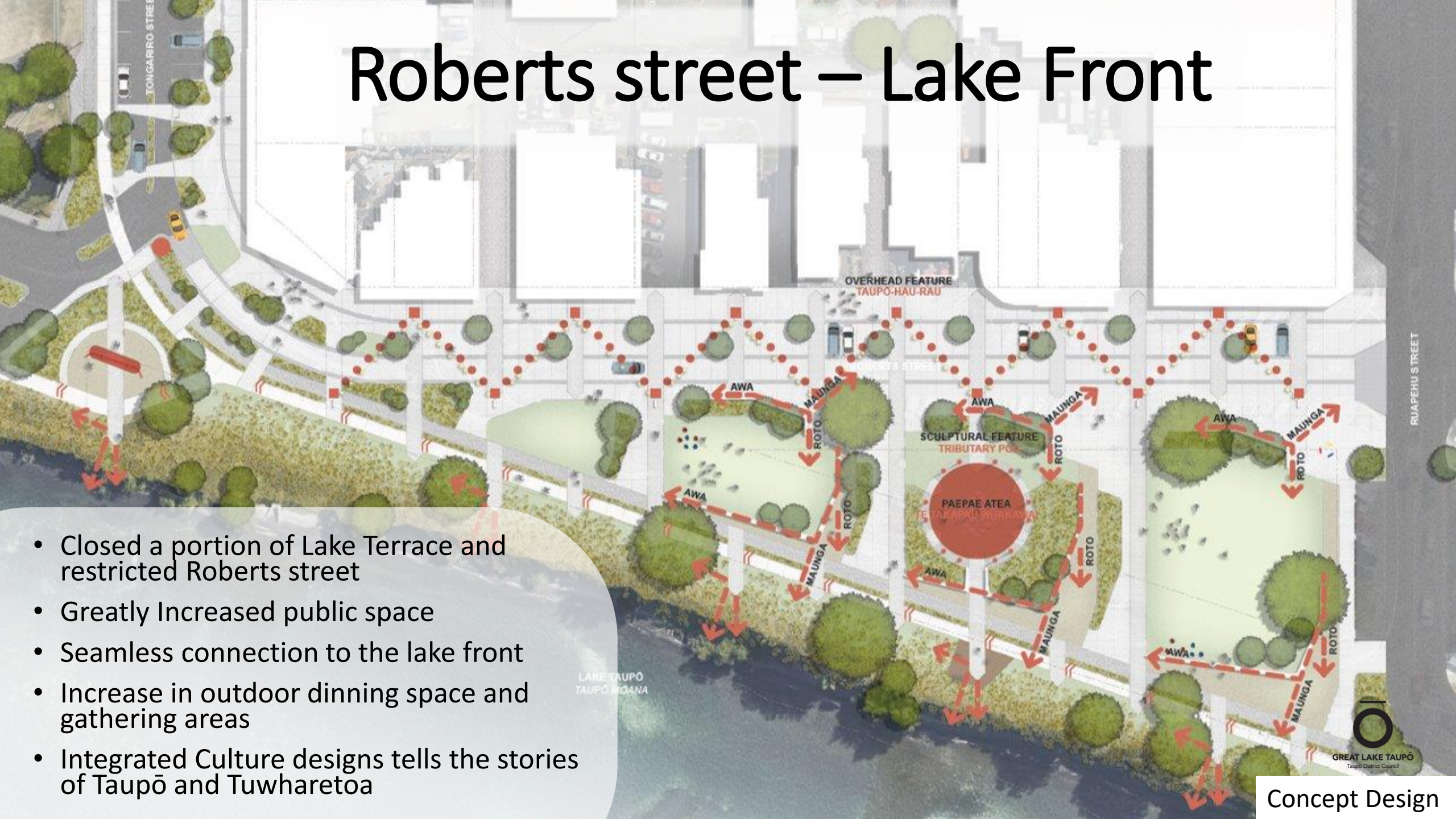
- Significant Barrier when Accessing the Lake Front
- Outdoor dining is low
- Reserve / public space was cut off between parking/road and Lake Terrace (ex SH1)
- Minimal Outdoor Dining Area

Roberts street – Design Process

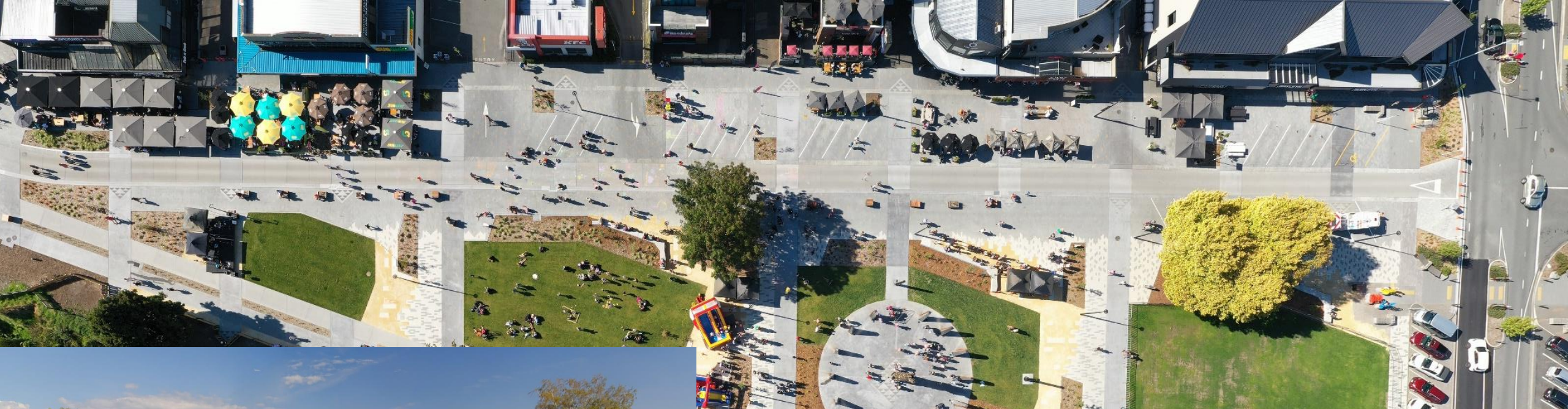


Roberts street – Lake Front

- Closed a portion of Lake Terrace and restricted Roberts street
- Greatly Increased public space
- Seamless connection to the lake front
- Increase in outdoor dining space and gathering areas
- Integrated Culture designs tells the stories of Taupō and Tuwharetoa



Roberts Street





GREAT LAKE TAUPŌ

Taupō District Council



TAUPŌ TOWN
CENTRE TRANSFORMATION

Lessons Learnt

- Having local consultant who can turn up to site was invaluable
- Weaving the cultural elements into the project early
- Have a dedicated stakeholder engagement person/team was critical