

# THE PIRITAHU ALLIANCE

## TRANSPORT FOR THE PEOPLE

Ruby Kim & Jan Franta



**Piritahi**  
LAYING THE GROUNDWORK



**HARRISON  
GRIERSON**



**Piritahi**

**VISION**

**TRANSFORMING AUCKLAND**

**PURPOSE**

**LAYING THE GROUNDWORK FOR THE NEW  
HOMES AND SPACES COMMUNITIES NEED**

- Kāinga Ora – Homes and Communities is building healthier homes for Kiwis
- 40,000+ new warm, dry homes planned nationwide in large-scale urban developments
- To do that, it must first provide the infrastructure to enable construction and support thriving communities

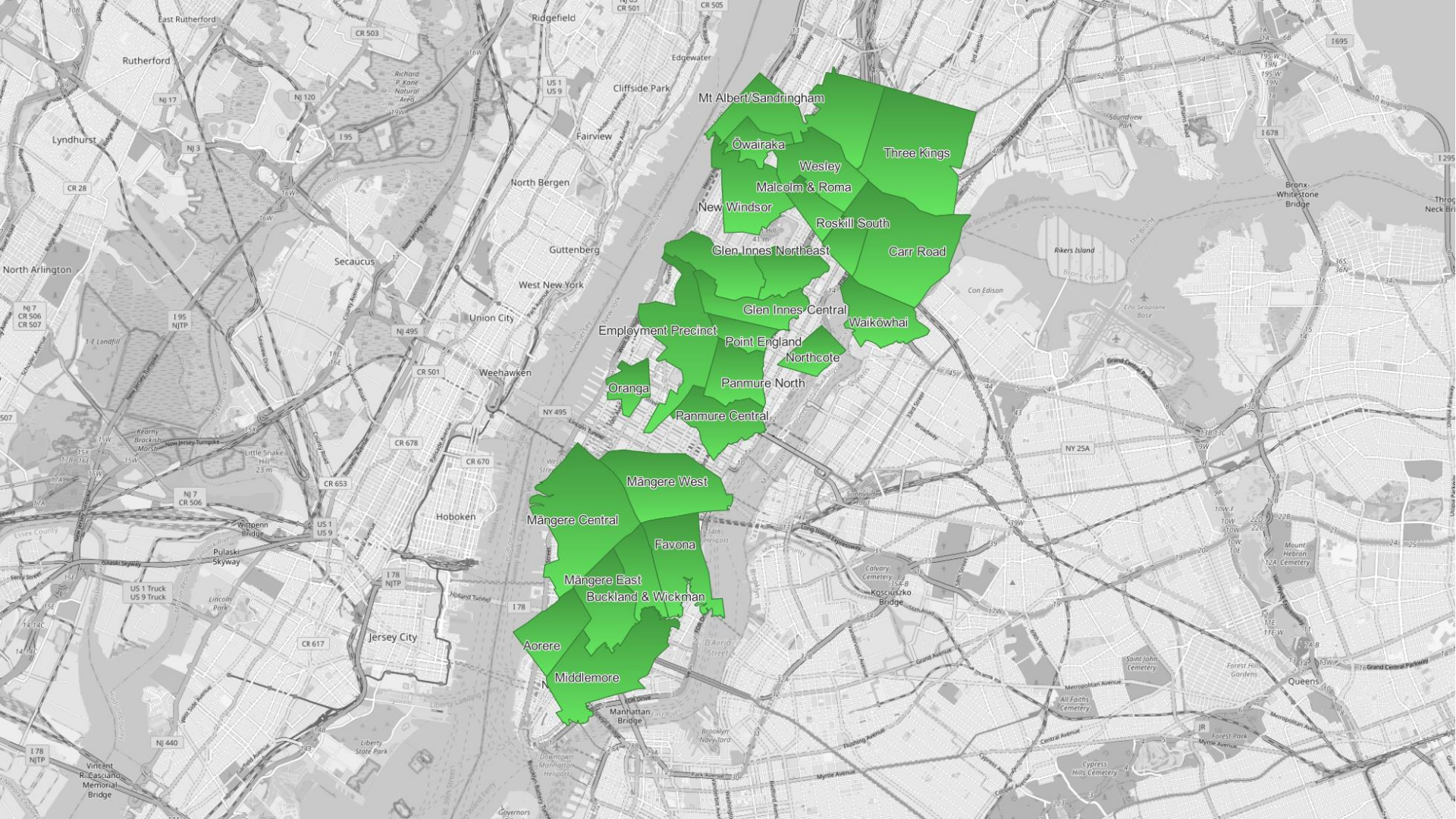
**Piritahi**



## More homes Great neighbourhoods



Map courtesy of Kainga Ora  
<https://kaingaora.govt.nz/developments-and-programmes/what-were-building/urban-development-large-scale-projects/>



Mt Albert/Sandringham

Ōwairaka

Wesley

Three Kings

Malcolm & Roma

New Windsor

Roskill South

Glen Innes Northeast

Carr Road

Glen Innes Central

Waikōwhai

Employment Precinct

Point England

Northcote

Oranga

Panmure North

Panmure Central

Mangere West

Māngere Central

Favona

Māngere East

Buckland & Wickman

Aorere

Middlemore

# Tāmaki Development

- 900 hectares 12km from Auckland CBD
- 6 residential neighbourhoods and 1 employment precinct
- Tāmaki Regeneration Company is master planner & Kāinga Ora master developer
- 728 Kāinga Ora homes in pipeline & 8892 in master planning phase (January 22)

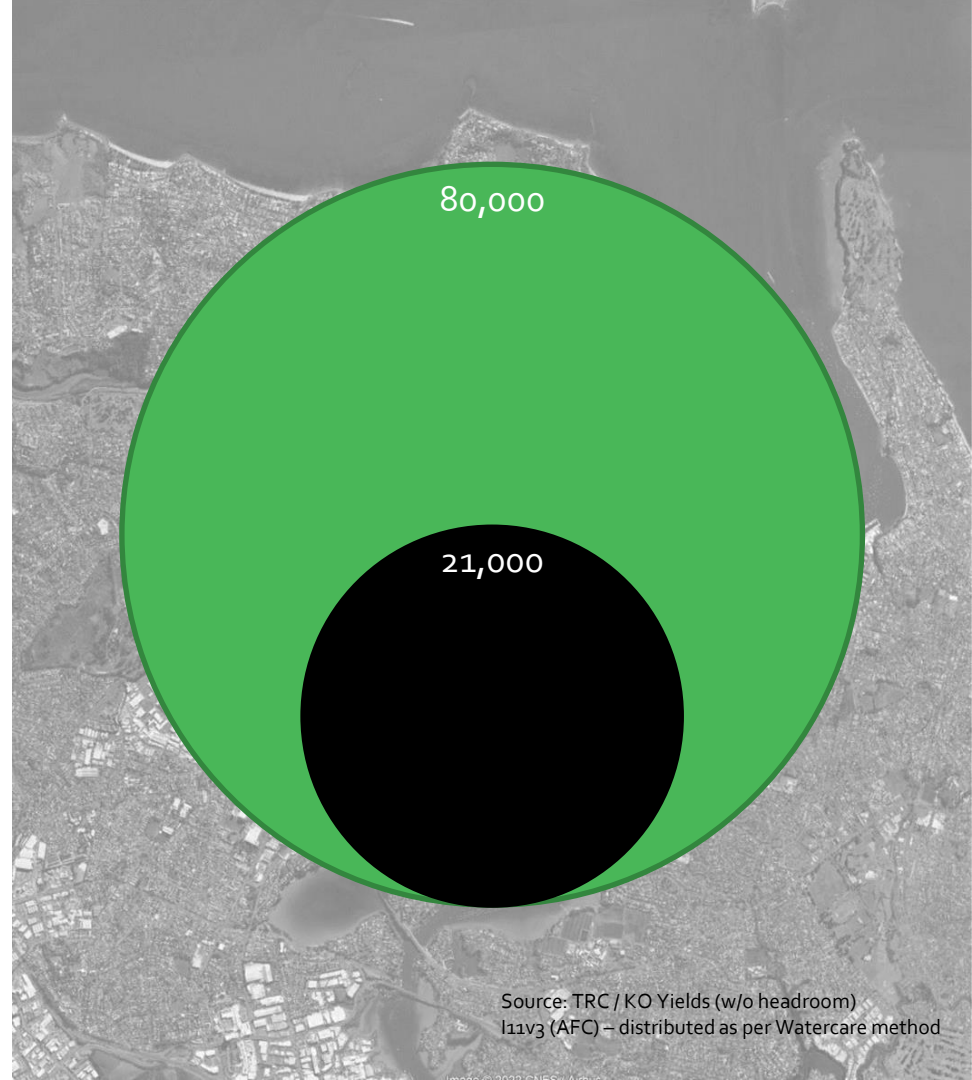
**Piritahi**



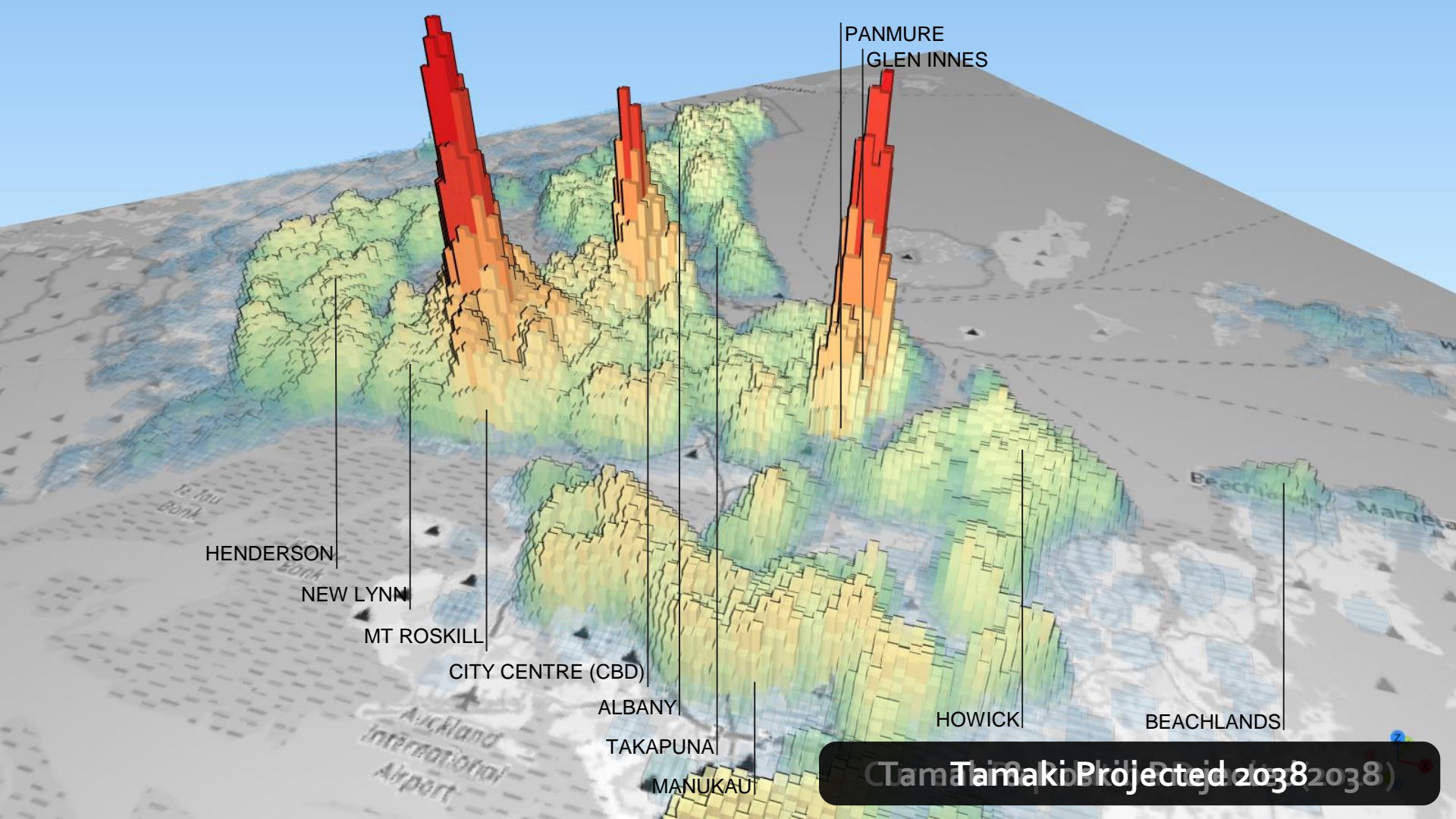
# Tāmaki Is Growing

- Current Population
- 2038 Prediction
  - Kāinga Ora & Tāmaki Regeneration Company
    - Social housing
    - Kiwi Build
    - Open market
  - Infill Developments (3<sup>rd</sup> party)

**Piritahi**



Source: TRC / KO Yields (w/o headroom)  
11v3 (AFC) – distributed as per Watercare method



PANMURE  
GLEN INNES

HENDERSON

NEW LYNN

MT ROSKILL

CITY CENTRE (CBD)

ALBANY

TAKAPUNA

MANUKAU

HOWICK

BEACHLANDS

Tamaki Project (2038)

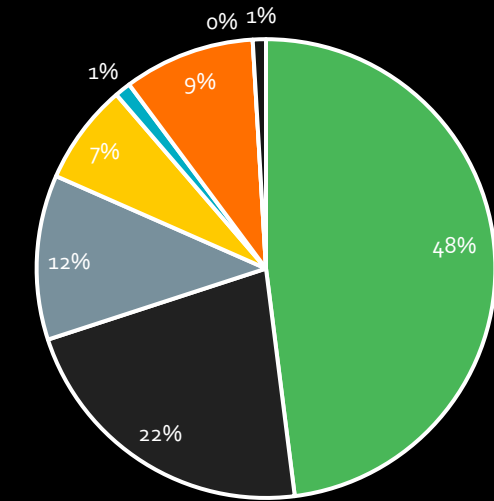


# Traffic Impacts

- High car dependency
  - 15,000 peak hour car trips are expected if business stays as usual
- Unsustainable
- Not enough space for more cars

**Piritahi**

Mode of Travel  
(2018 Work and Education)



■ Driver   ■ Passenger   ■ Bus   ■ Train  
■ Bike   ■ Walk   ■ Ferry   ■ Other

# Driving the Change

- Close cooperation with Auckland Transport & many other stakeholders
- Rare opportunity to influence both public roads and Kāinga Ora housing developments



Reducing the need to travel

Promoting modal shift



Creating a safe environment prioritizing sustainable travel modes

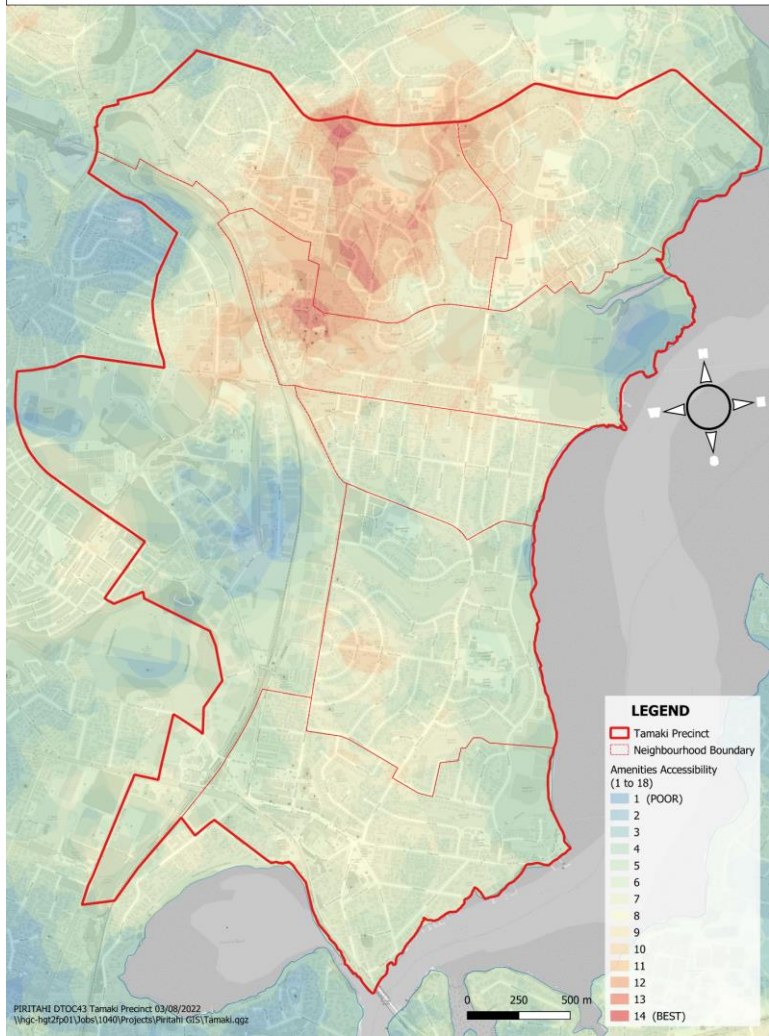
**Piritahi**

# Reducing the Need to Travel

- 15-min neighbourhood / 20-min cities
- Access to amenities
  - Primary schools
  - Intermediate and high schools
  - Neighbourhood centres
  - Town centres
  - Healthcare
- Accessibility heatmap
- Informs development type & need for upgrades

**Piritahi**

## TAMAKI - AMENITIES ACCESSIBILITY

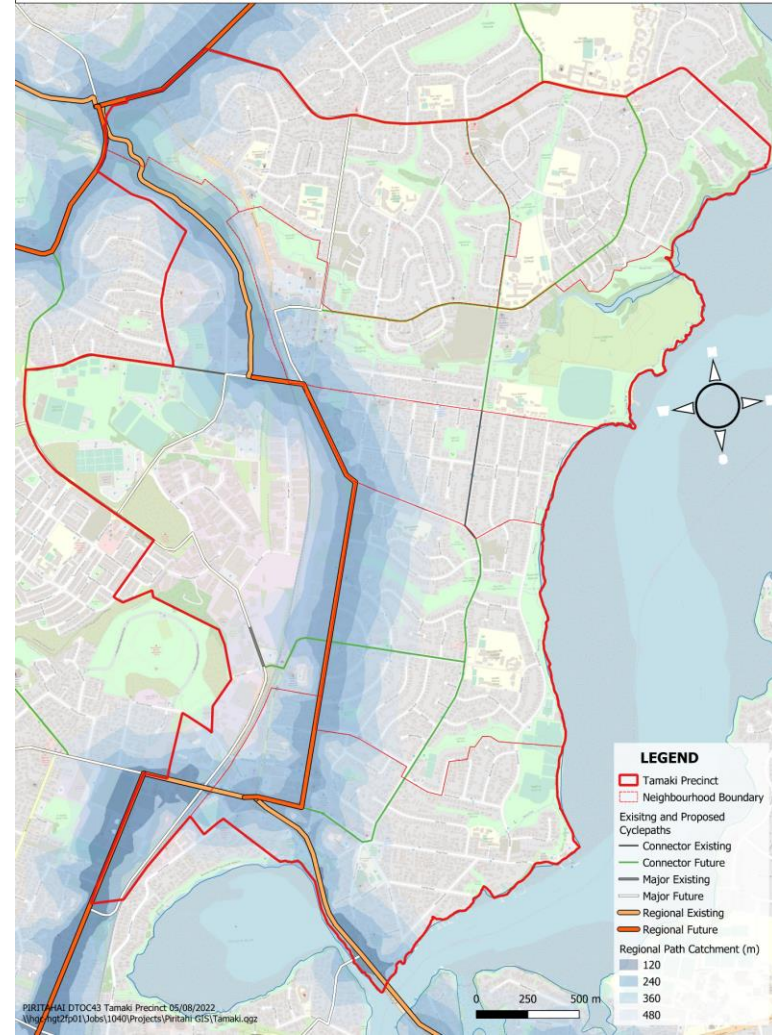


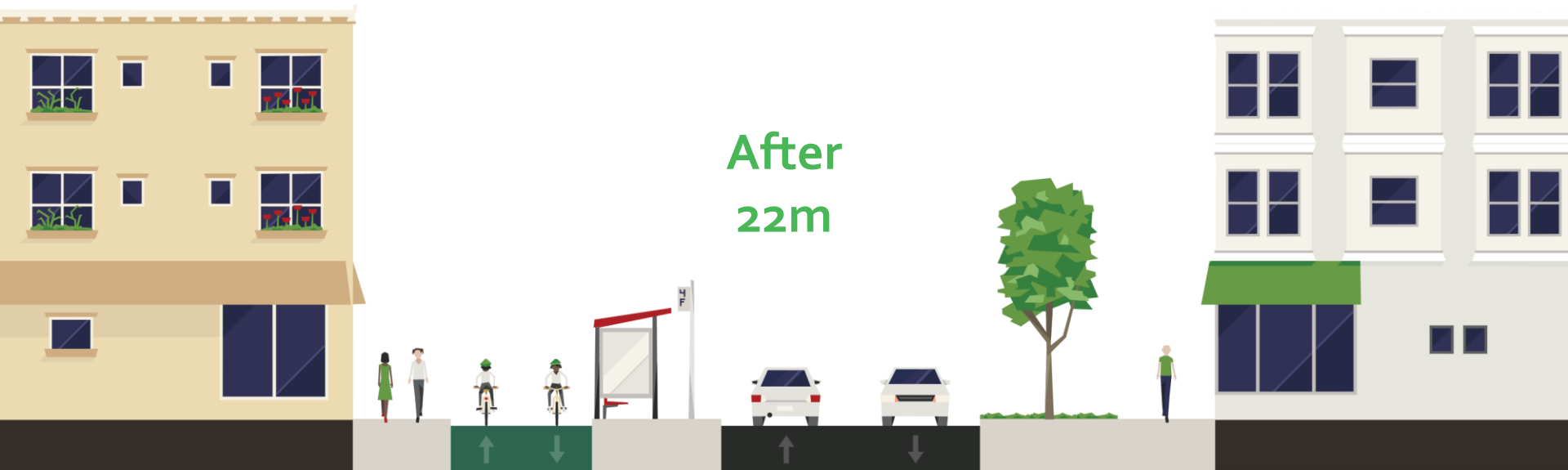
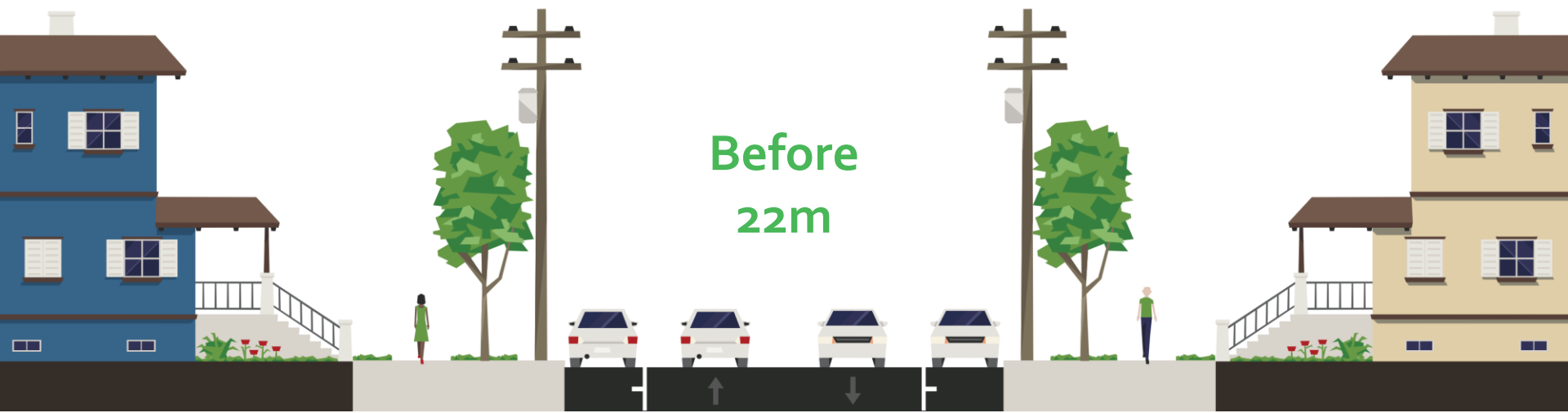
# Promoting modal shift = Designing for modal shift

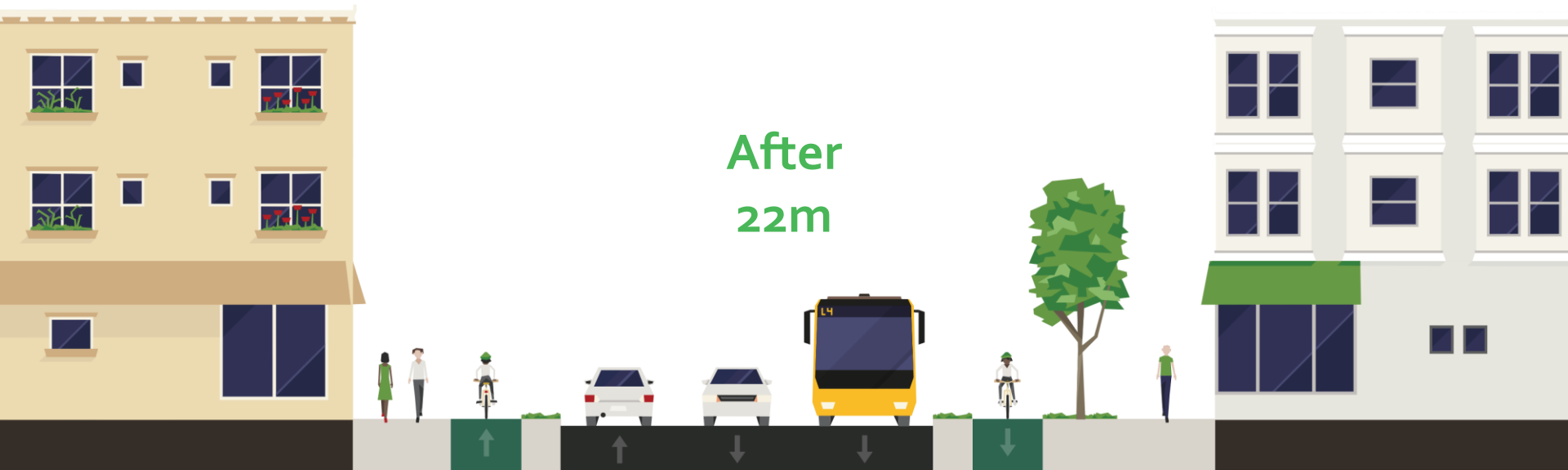
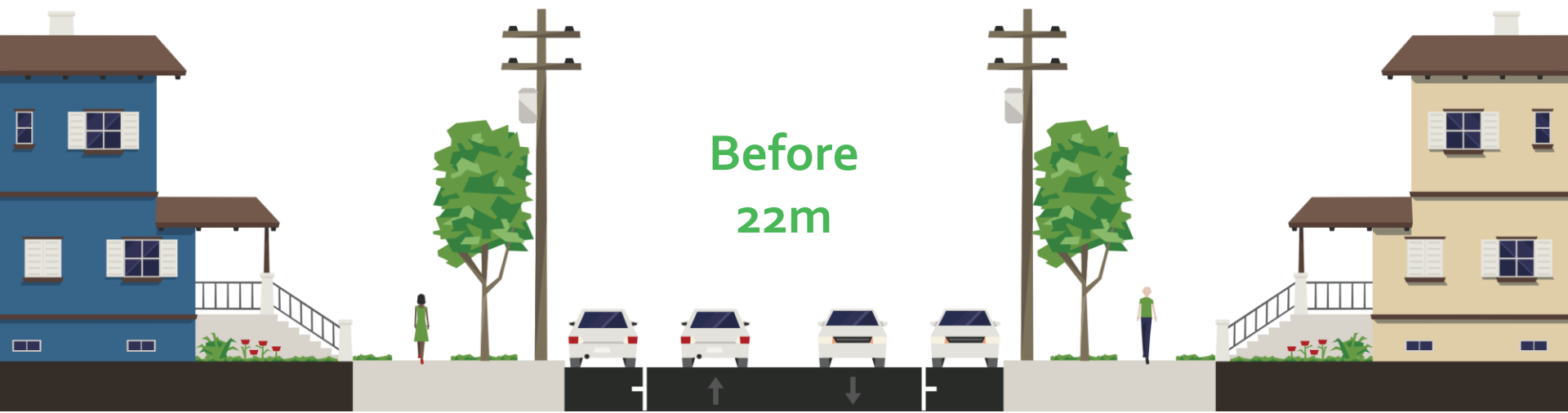
- Improve access to rail services
- Improve bus services and build bus priority lanes
- Focus on active modes and permeability

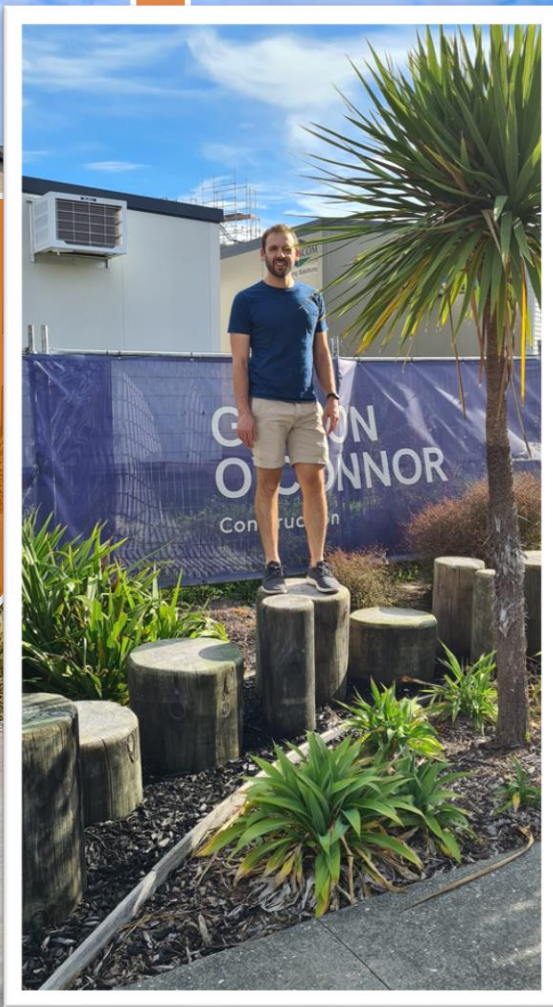
**Piritahi**

## TAMAKI - FUTURE REGIONAL CYCLEPATH CATCHMENT









Water-sensitive design

Shared path

Recreational uses







Secure bike parking

Rear residential parking

Secure bike parking



# Thank you | Ngā mihi

Ruby Kim

[Ruby.kim@harrisingrierson.com](mailto:Ruby.kim@harrisingrierson.com)

Jan Franta

[Jan.franta@harrisingrierson.com](mailto:Jan.franta@harrisingrierson.com)

**Piritahi**