

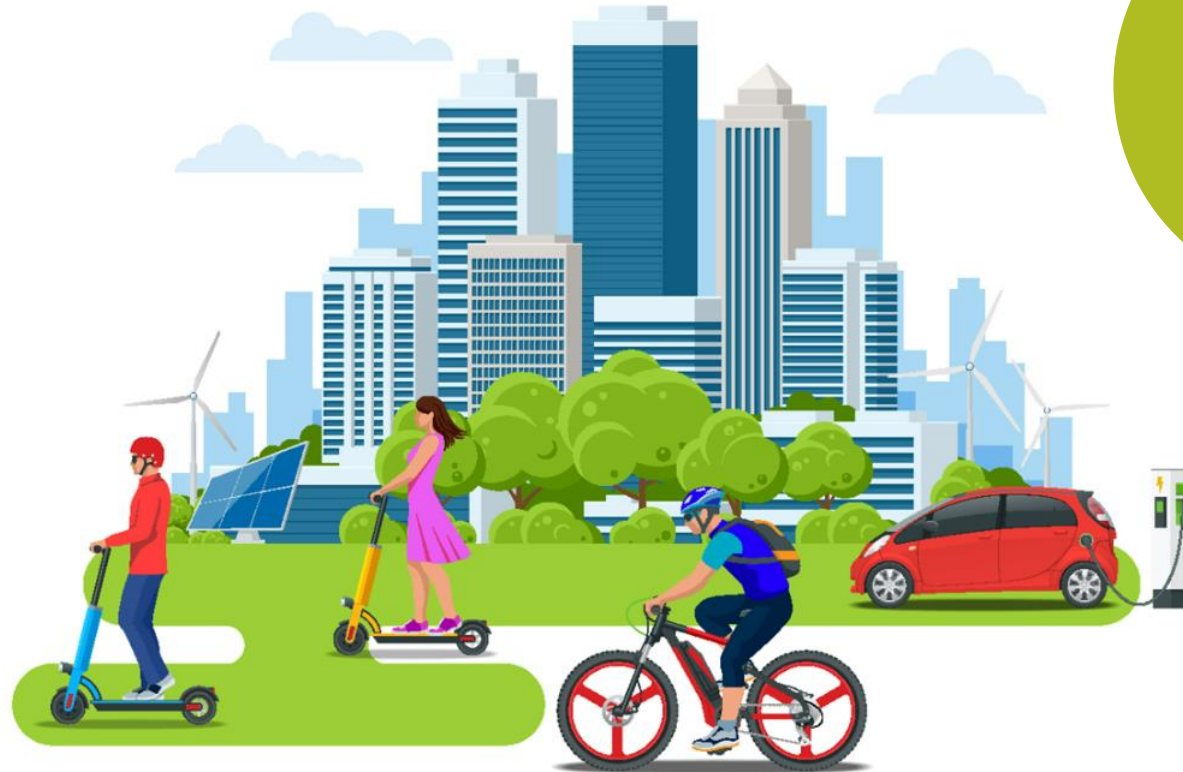
# What next for implementation?

Karishma Kumar  
Principal Advisor  
Urban Mobility

ROAD  
CLOSED  
EXCEPT  
CYCLES

# Emissions Reduction Plan

- 1 Reduce reliance\* on cars and support people to walk, cycle and use public transport
- 2 Rapidly adopt low-emissions vehicles
- 3 Begin work now to decarbonise heavy transport and freight



**41%**  
reduction of  
transport  
emissions by  
2035

**About 90% transport emissions come from land transport, primarily light vehicles (65%)**

## Emissions Reduction Plan transport targets

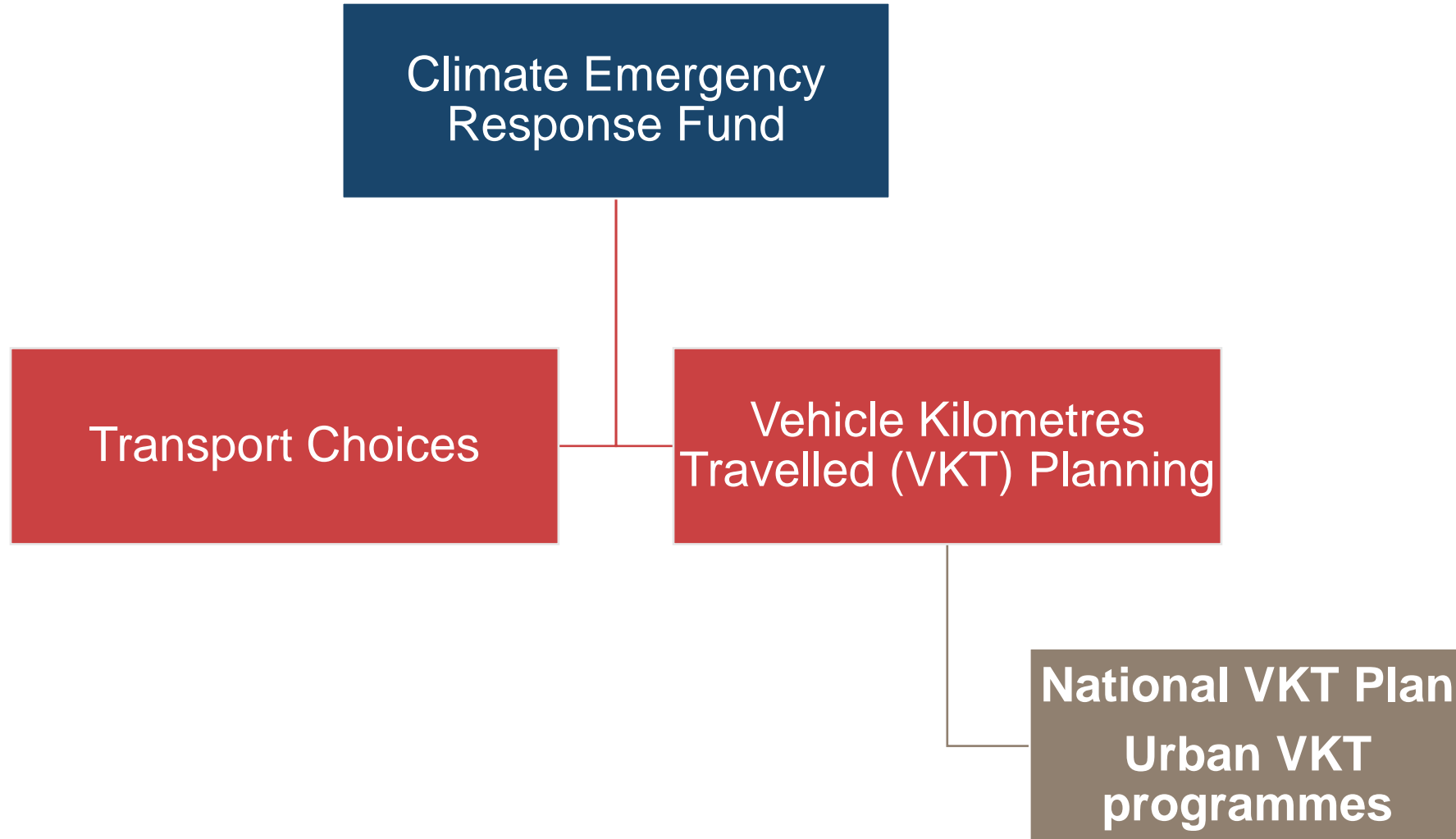
**1**  
Reduce total kilometres travelled by the light fleet by **20%** by 2035\*

**2**  
Increase zero emissions vehicles to **30%** of the light vehicle fleet by 2035

**3**  
Reduce emissions from freight transport by **35%** by 2035

**4**  
Reduce the emissions intensity of transport fuel by **10%** by 2035

# Funding overview



# Role of Vehicle Kilometres Travelled (VKT) Programme



# The ask from the Emissions Reduction Plan

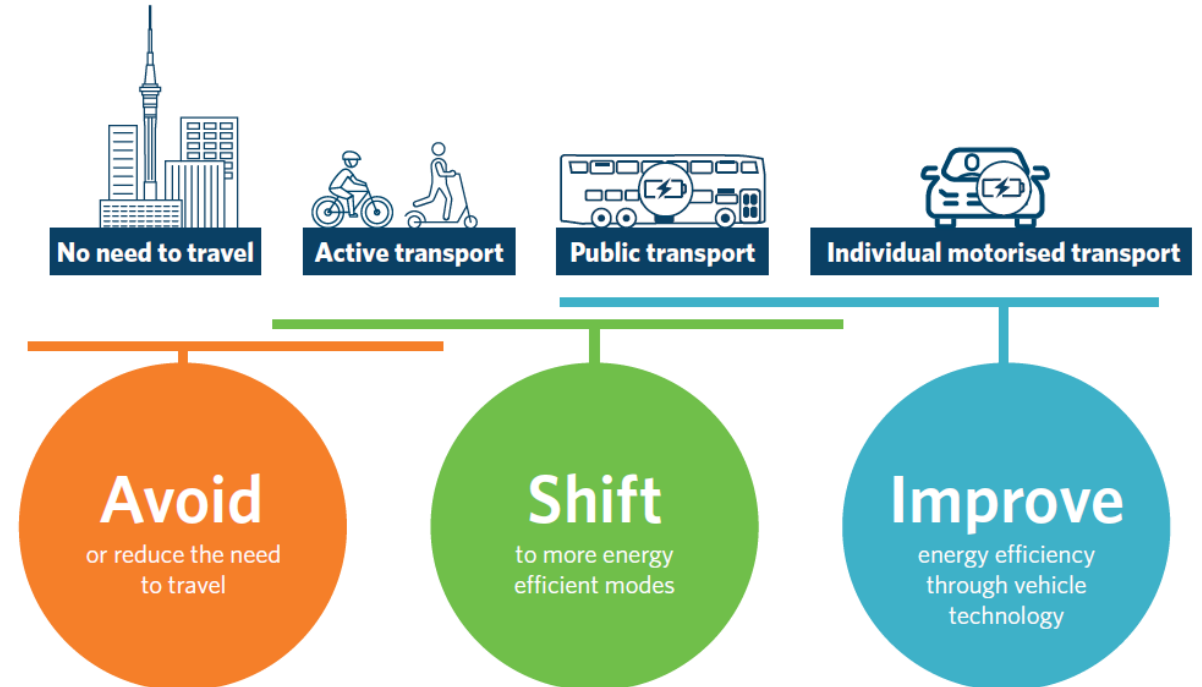
1. Revise Waka Kotahi's national mode-shift plan (*Keeping Cities Moving*) to ensure nationally led activities align with the pace and scale of VKT reduction and mode shift required in urban environments
2. Develop VKT reduction programmes for New Zealand's major urban environments in partnership with local government, Māori and community representatives



# The challenge ahead

## Pace and scale is needed

- Delivering a reduction in car use must be done in a way that is **equitable**, **meets other government objectives** and **supports community aspirations**
- Business as usual is not enough to reach our emissions targets



# Role of urban programmes





# What is the ask?

Deliver what we are planning and looking ahead

- **The final output:** programmes of actions, including timing, lead agency and costs, with supporting documentation
- **The process:** will differ between urban areas, but we are seeking to partner through existing planning processes





# Partnering approach

We jointly develop the programme

- Focus on partnering through Urban Growth Agenda Partnerships
- We would like councils to bring local relationships, knowledge and expertise to support partnering, engagement and programme development specific to your urban area that your governance will get on board with
- **Note:** that the requirement is for Waka Kotahi to partner with local government, Māori, and community representatives



**What could this look like on the ground?**

# What has been happening?



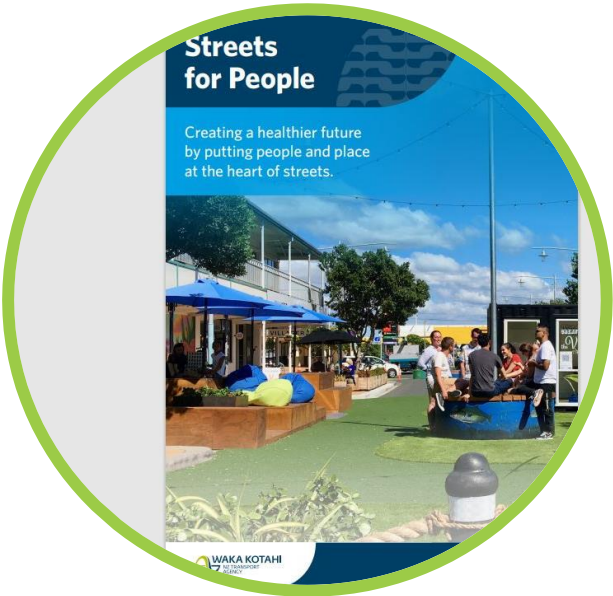
**2019**  
First Waka Kotahi supported tactical urbanism in Aotearoa



**2020**  
COVID-19 Emergency Response



**2020-21**  
Innovating Streets for People



**2021-24**  
Streets for People



# Rapid roll out: Transport Choices

*Delivered by June 2024*

<p><b>Delivering strategic cycling / micro-mobility networks</b></p> <p>Significantly increasing the pace and scale of implementing planned cycling/micro-mobility networks in urban areas through delivering low-cost, safe, on street cycleways.</p> 	<p><b>Creating walkable neighbourhoods</b></p> <p>Targeted and neighbourhood scale investments to significantly improve the safety and attractiveness of walking in urban areas, focused around centres, rapid transit stations, and in rapidly growing neighbourhoods.</p> 
<p><b>Supporting safe green and healthy school travel</b></p> <p>Accelerate investment in school travel programmes, delivering comprehensive change that makes active modes safer and more convenient for trips to/from schools and in surrounding neighbourhoods.</p> 	<p><b>Making public transport more reliable and easier to use</b></p> <p>Accelerating programmes of small-scale upgrades to public transport facilities to improve customer experience and service quality for people of all ages and abilities.</p> 



# What next?

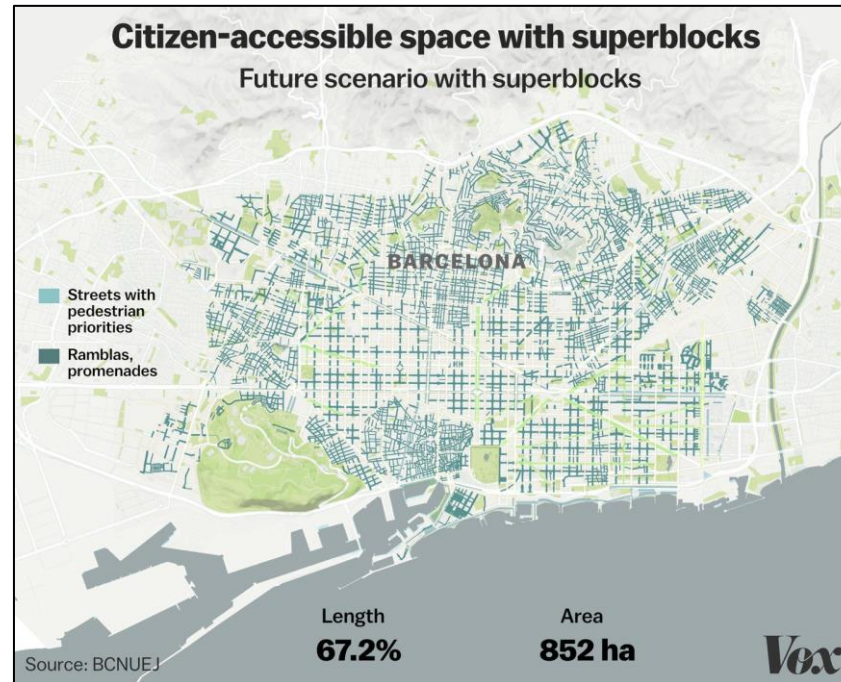


# Bold initiatives happening overseas

*We need to get the balance right*

## All major road building projects in Wales are scrapped

Urban programmes will play a key role in shifting the narrative, dial and scale

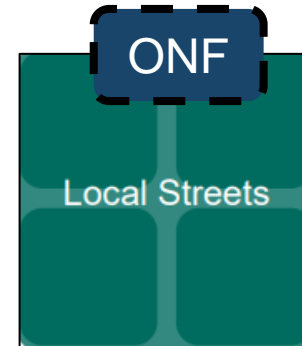
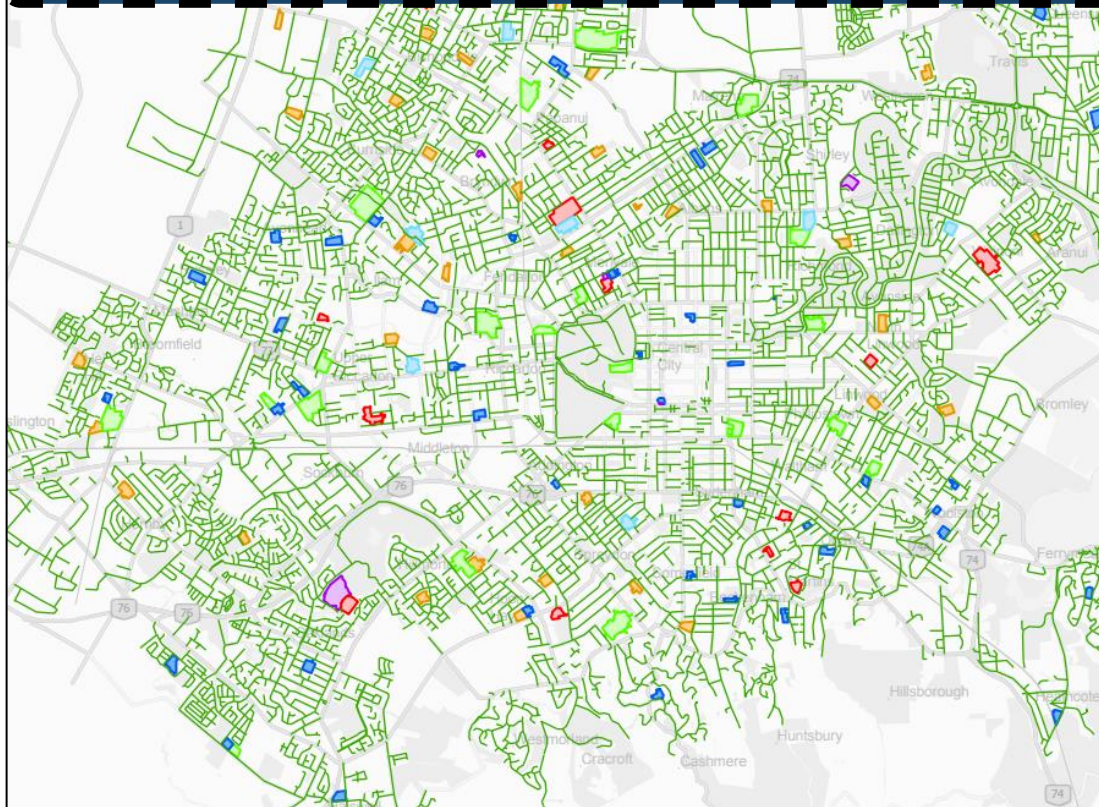




# Planning for movement and place

*It's real potential at a network scale*

City-wide roll out of play streets and 30kmph around urban schools





# Re-imagining an urban space

*Christchurch example*



**Activity Street: Papanui Road**



**Local Street: Restrict St**



**Main Street: Papanui Road**

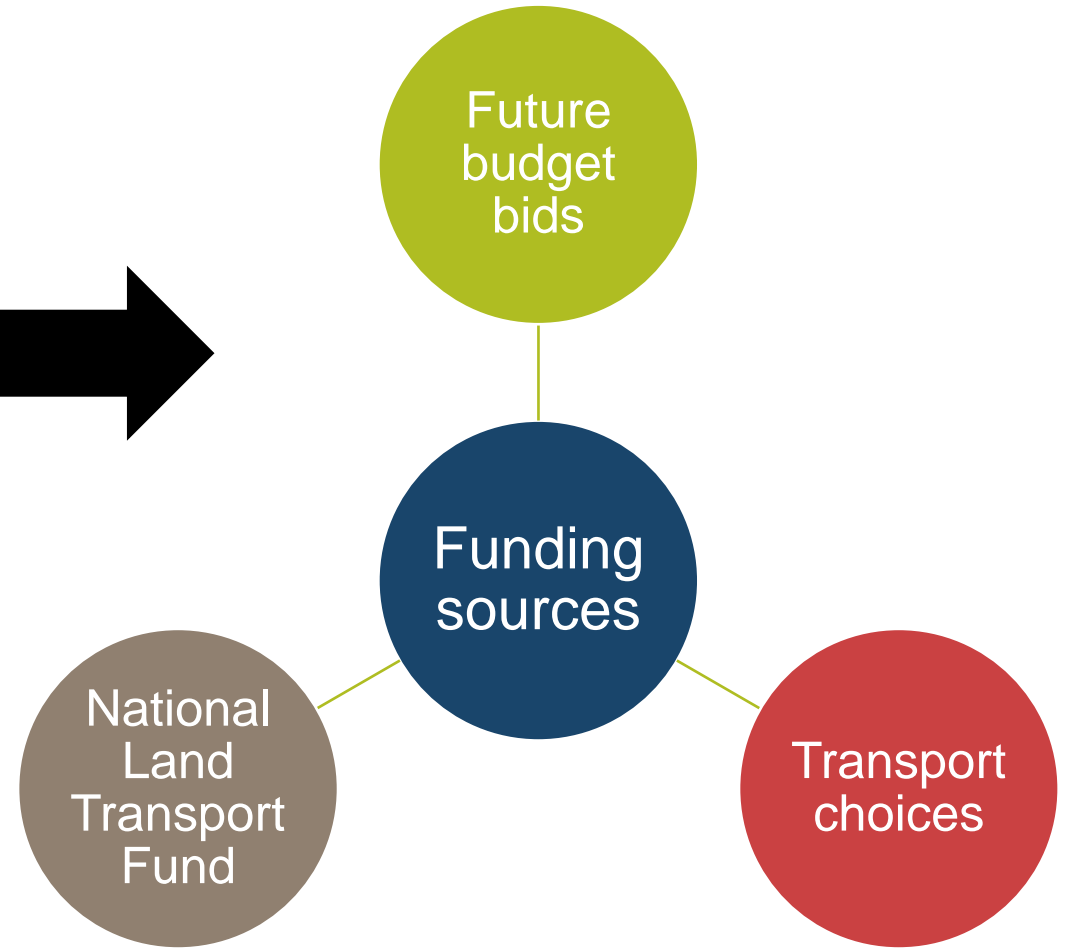
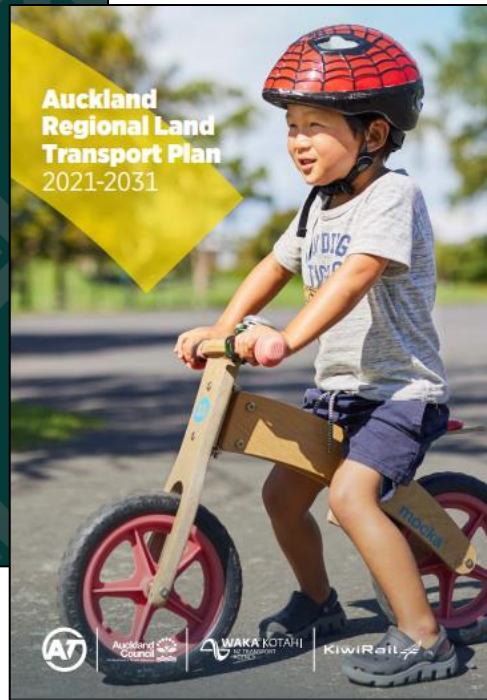


**Local Street: Merivale Lane**



# To end ...

*Future funding implications*





# Pātai?

