

# The importance of reducing transport emissions for the climate and future generations

Hugh Marshall-Tate, Senior Analyst  
Transportation Group New Zealand Conference



# Our role

---

**We provide independent, impartial,  
expert evidence-based advice to the  
Government on climate issues**

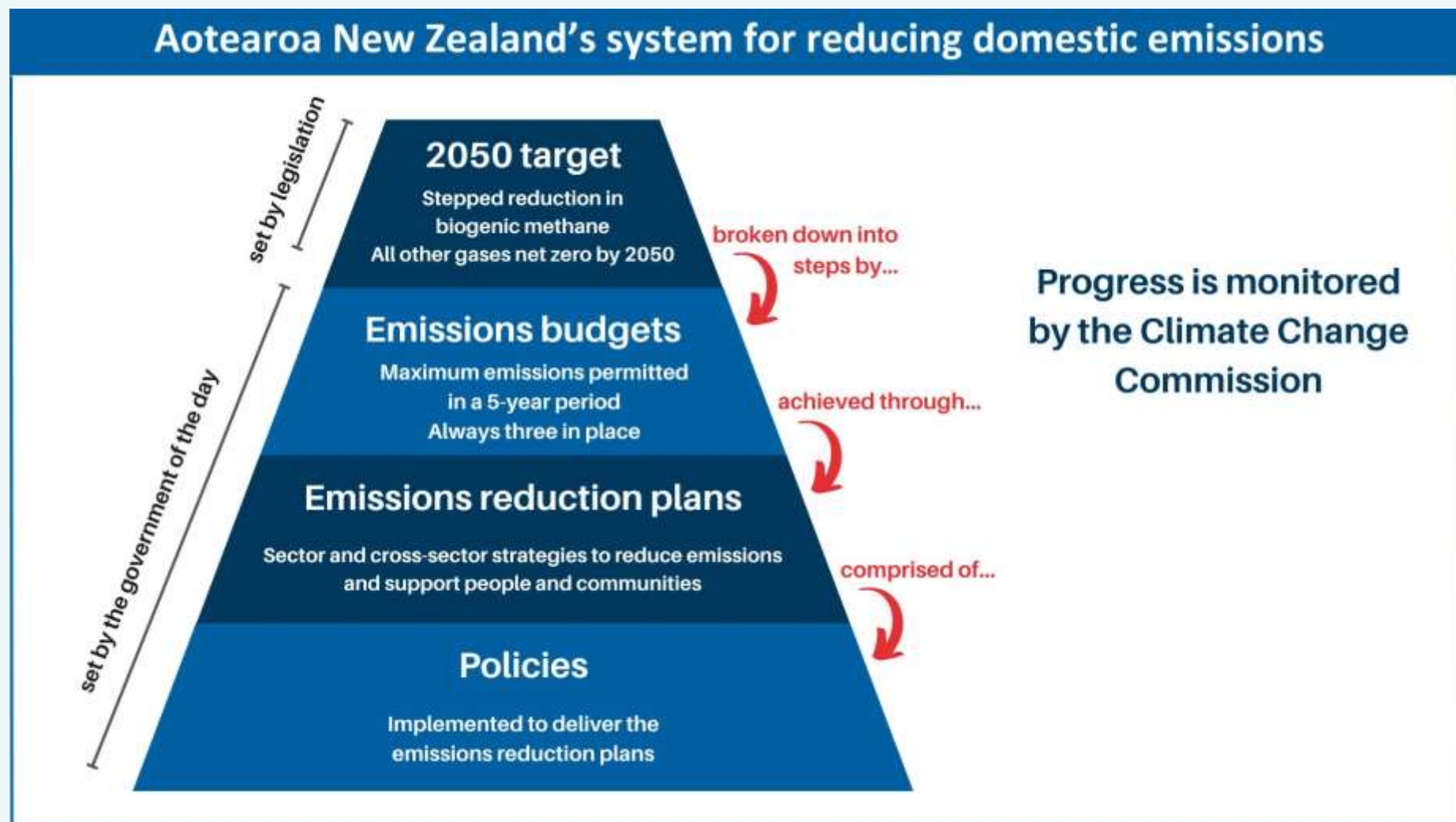


# Our approach

---

- Our work is evidence-based, but that doesn't just mean data.
- Our analysis and advice takes a 'systems view'.
- Parliament sets out what needs to be thought about in the transition and this is the focus of our work.

# How does this all fit together



# NZ climate adaptation policy cycle



# Advice to Government

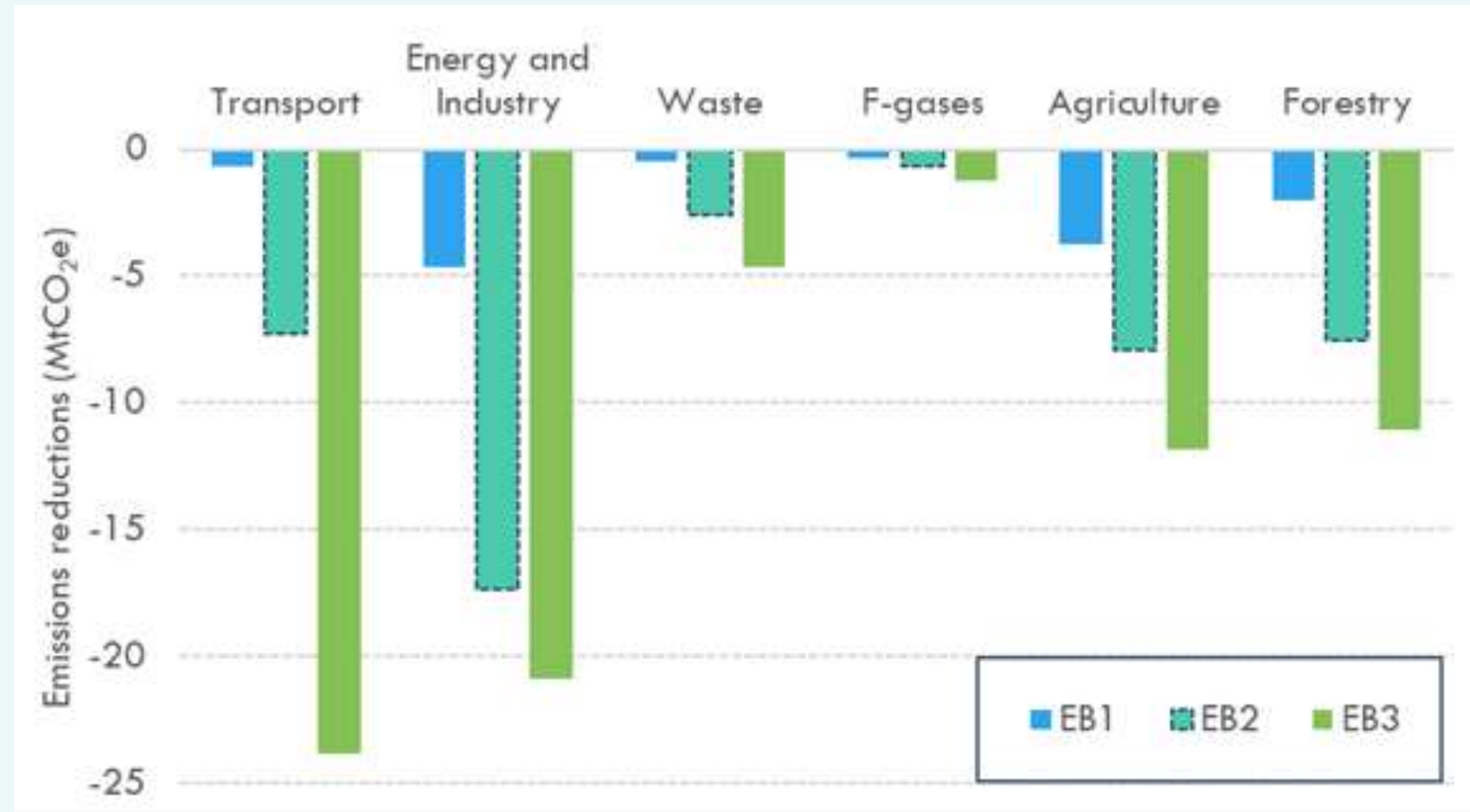


# **The past: Advice on the direction of policy for the second emissions reduction plan**

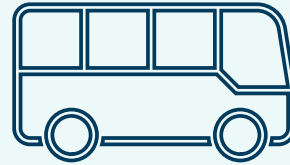
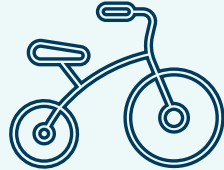
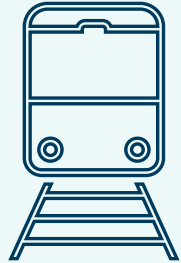
Advice delivered at the end of 2023



# The task for emissions budget two

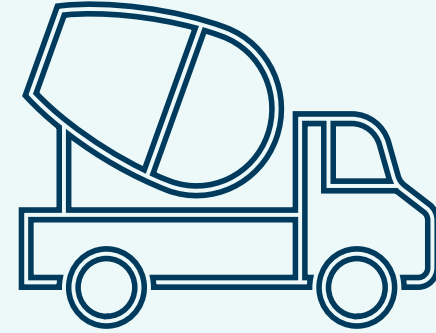
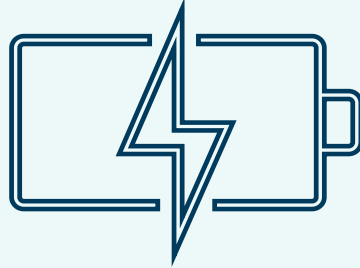
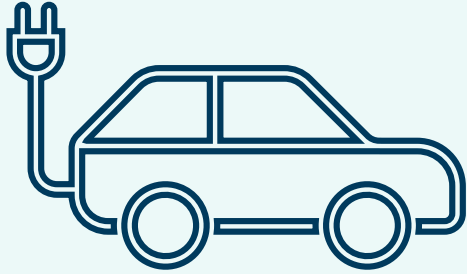


# Recommendations to increase walking, cycling, and public transport



- Provide dedicated long-term funding for the construction of integrated cycle and rapid transport networks in major population centres
- Simplify planning and increase investment in integrated infrastructure and services that optimise public and active transport

# Electrification



- Rapidly upscale vehicle charging infrastructure, including removing existing barriers
- Accelerate the uptake of zero emissions commercial vehicles, including vans, utes, trucks, and offroad vehicles

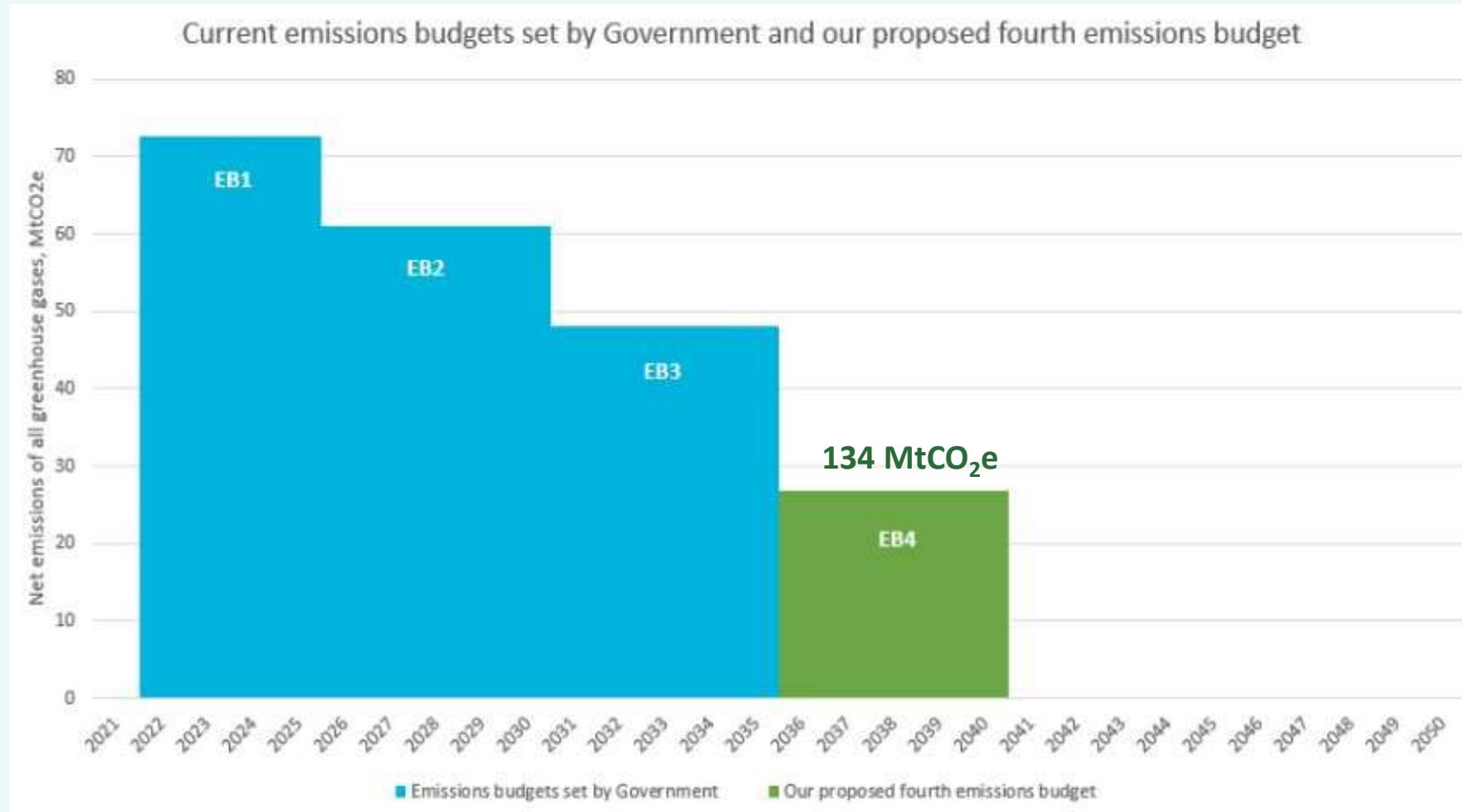
# The present: Draft advice on the fourth emissions budget

Final advice to be delivered by the end of 2024

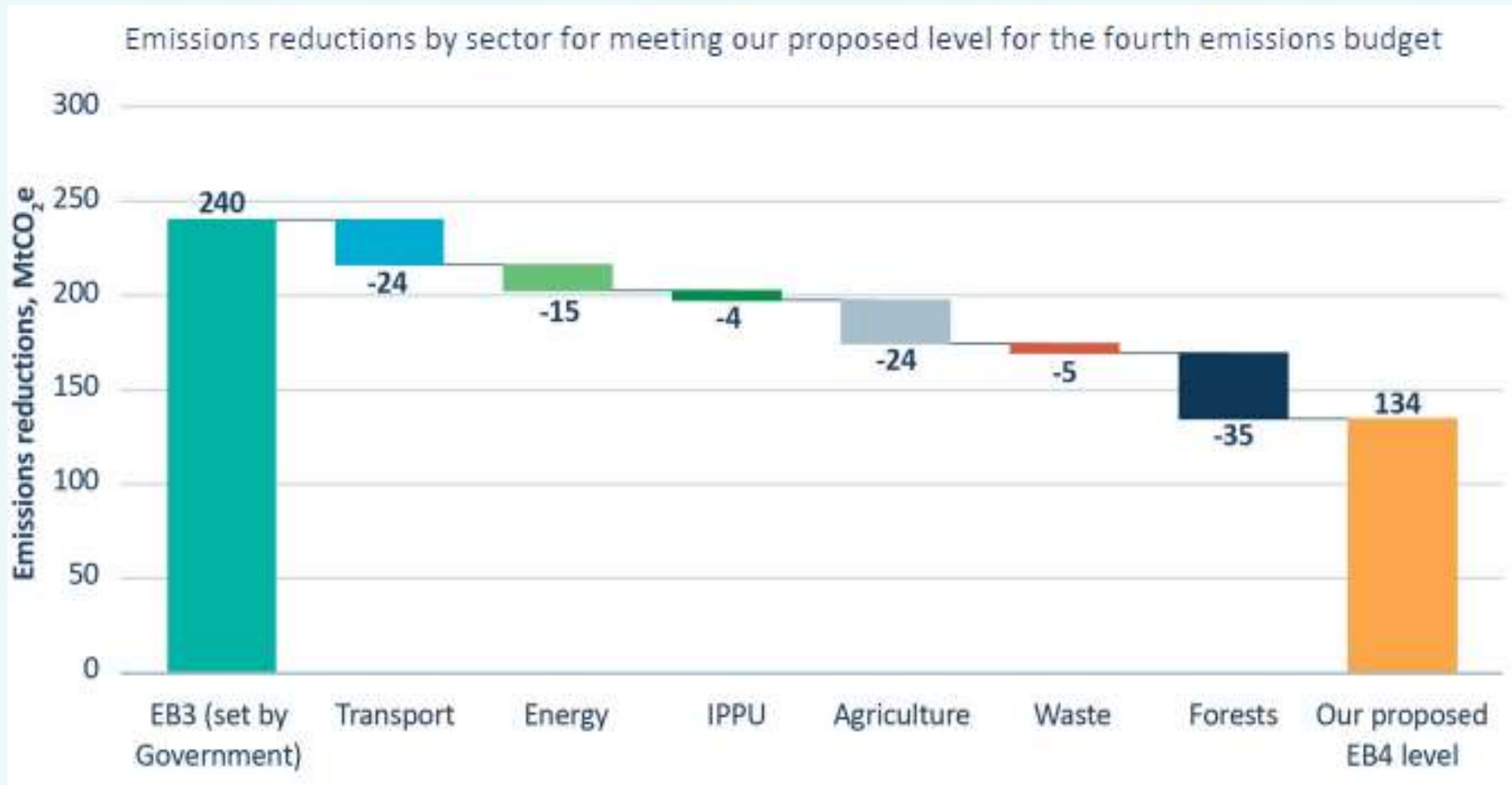
# 'Stepping stones' to the 2050 target

- Emissions budgets lay a smooth pathway towards a thriving, low emissions future.
- They set the *maximum* quantity of emissions of all GHGs permitted during a particular 5-year period
- The first three budgets are in place, and it's time to set the fourth budget
- The Act guides how we give advice on emissions budgets and what we must consider when we develop this advice

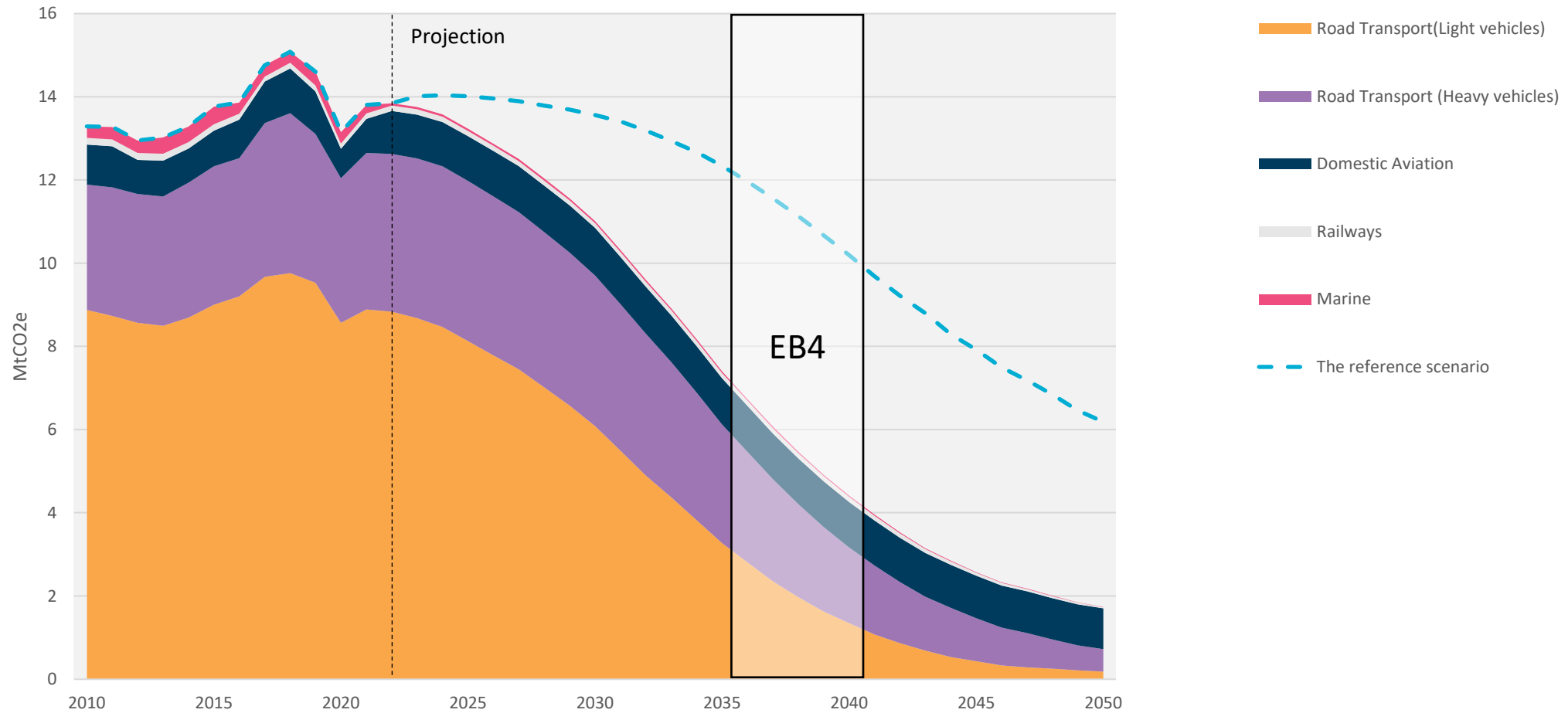
# Our initial assessment of what the 4th emissions budget should be



# Our demonstration path shows this budget is ambitious and achievable

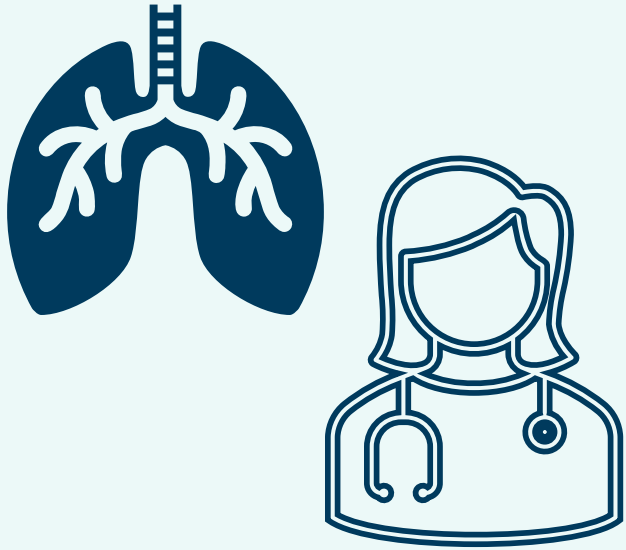


# Transport emissions in our draft EB4 advice





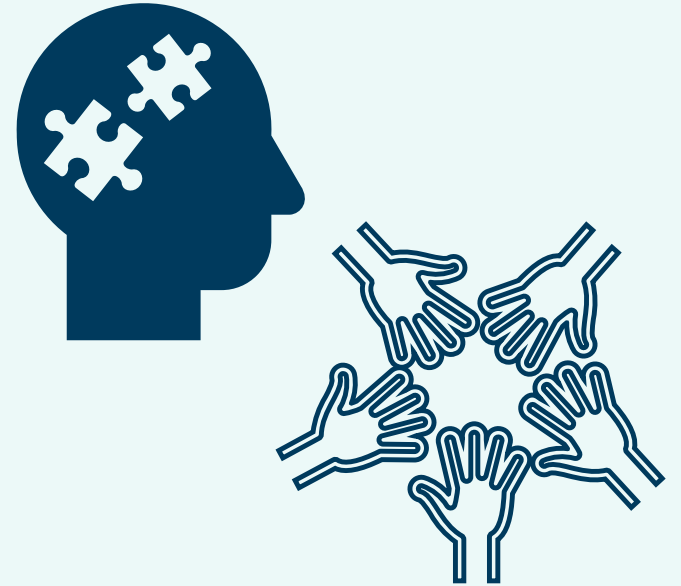
# What does this mean for future generations?



Reduced air pollution,  
better health  
outcomes



Lower resource costs,  
less dependence on  
imported fuels



Improved wellbeing  
and equity

# The future

What to expect from the commission in the future

# What next?

## Commission advice

We will deliver our three pieces of final advice to the Minister of Climate Change by **31 December 2024**

Advice on New Zealand's nationally determined contribution - **2024**

Emissions Reduction Monitoring Report - **July 2024**

National Adaptation Plan Monitoring - **August 2024**

National Climate Change Risk Assessment - **2026**

# Closing

---

- New Zealand's emissions, including transport, need to be reduced rapidly to achieve the 2050 target.
- Our pathway shows that decarbonising the transport system will have significant benefits for health, reduce resource costs and improve transport equity.
- A better and cleaner transport system is better for everyone. We intend to advise this and future governments on how to get there and assess progress regularly.

# Ngā mihi

For more info and updates,  
please visit our website  
[climatecommission.govt.nz](https://climatecommission.govt.nz)



**He Pou a Rangi**  
Climate Change Commission

# Patai?

For more info and updates,  
please visit our website  
[climatecommission.govt.nz](https://climatecommission.govt.nz)



**He Pou a Rangi**  
Climate Change Commission