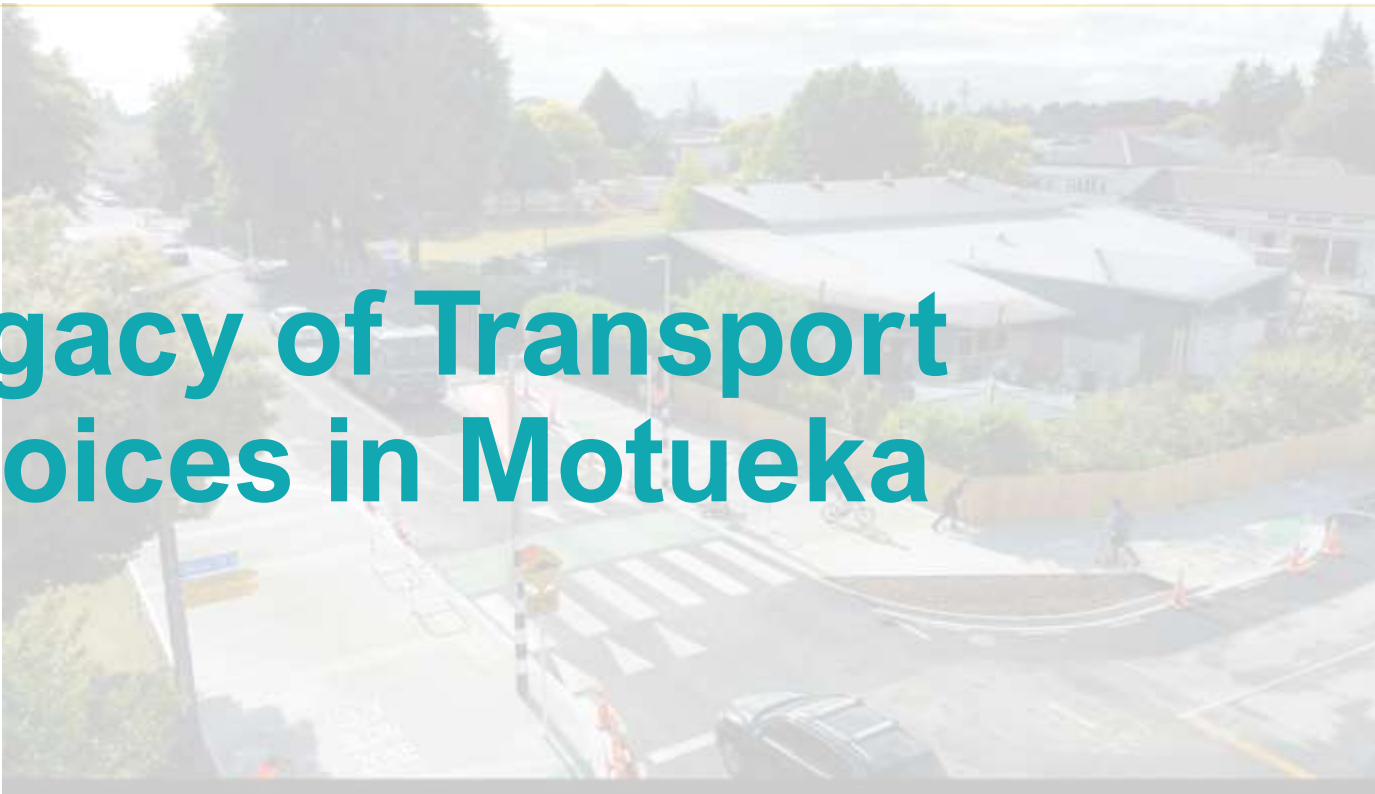
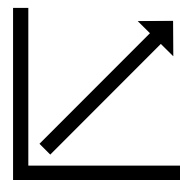
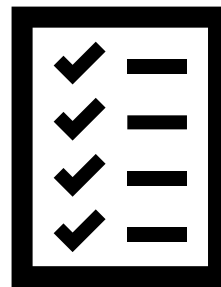
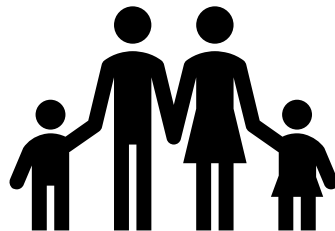
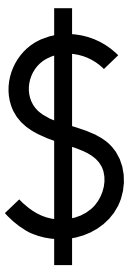


Legacy of Transport Choices in Motueka



What makes a successful project?



Why Motueka Transport Choices?

Motueka locals

- Want to get about town safely

TDC active mode strategy

- Mode shift for improved network capacity, health and environment

NZTA Transport Choices

- Infrastructure that supports mode shift to meet emissions reduction targets

Time frame



So, what happened?

- TDC worked with BPM, Beca, Boffa Miskell, Amy Shattock and various contractors
- A focus on crossings, intersections and shared paths to connect existing infrastructure, as well as a few cycleways



Was this a success?

- Motueka locals
 - We built lots of great stuff
 - Speeds are down at conflict points
 - Community feels safer



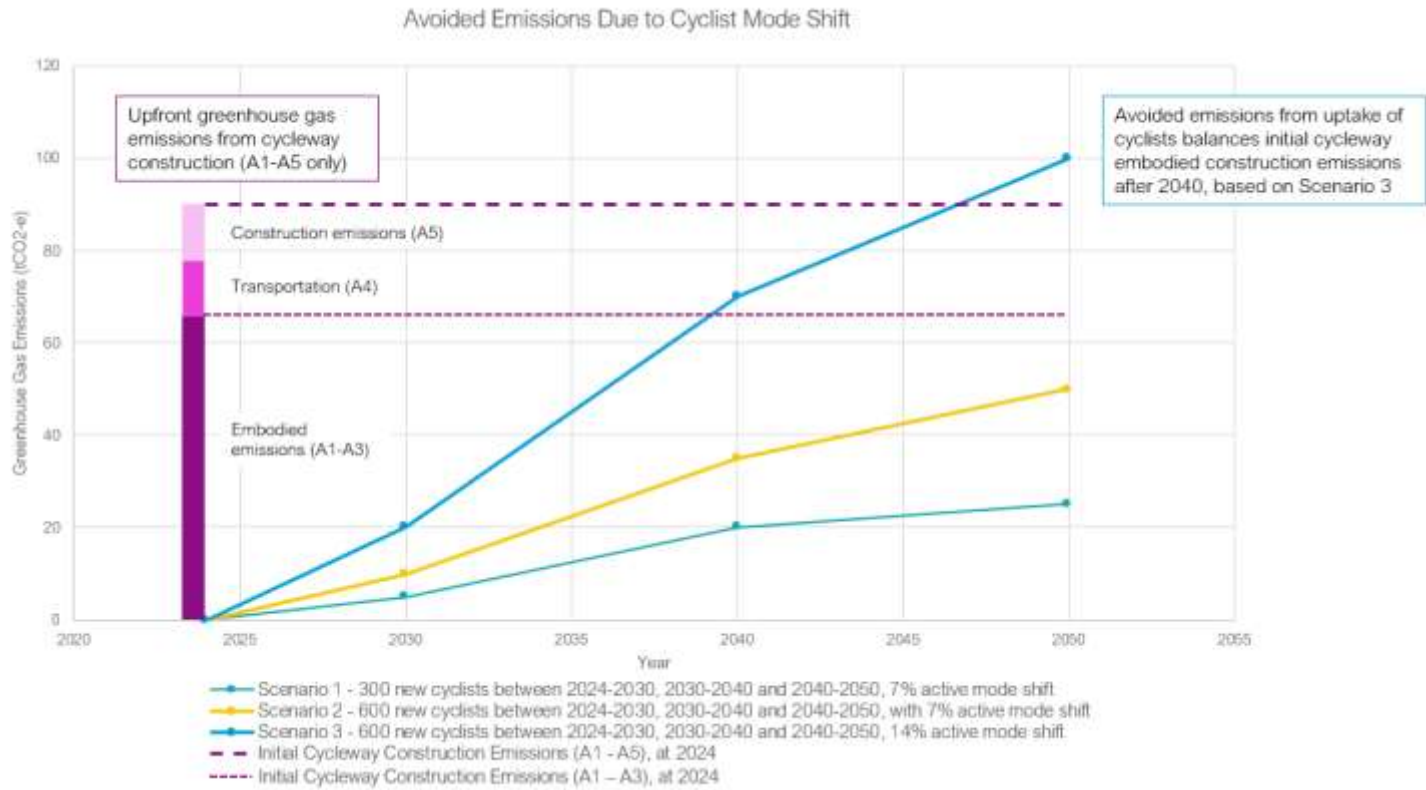
Was this a success?

- TDC
 - Future generations have better transport options
 - More people walking and cycling towards the 2030 goal of 100% - time will tell



Was this a success?

- NZTA
 - Carbon reduction – next generation?



Where to from here?

- Should we worry if we don't meet these targets immediately?
- What should future programmes do?
 - Acknowledge where projects have long term benefit horizons, find some early wins
 - Monitoring and evaluation plans are critical to this, but allow budget to carry them out
 - In this funding climate, all projects should be demonstrating success