

Glen Eden Micromobility Hub

Timothy F. Welch, JD, LL.B, PhD

Pouako Matua | Senior Lecturer

Director, Urban Planning programme

Co-director, Future Cities Research Hub

Te Pare | School of Architecture and Planning

Creative Arts and Industries

Waipapa Taumata Rau | University of Auckland

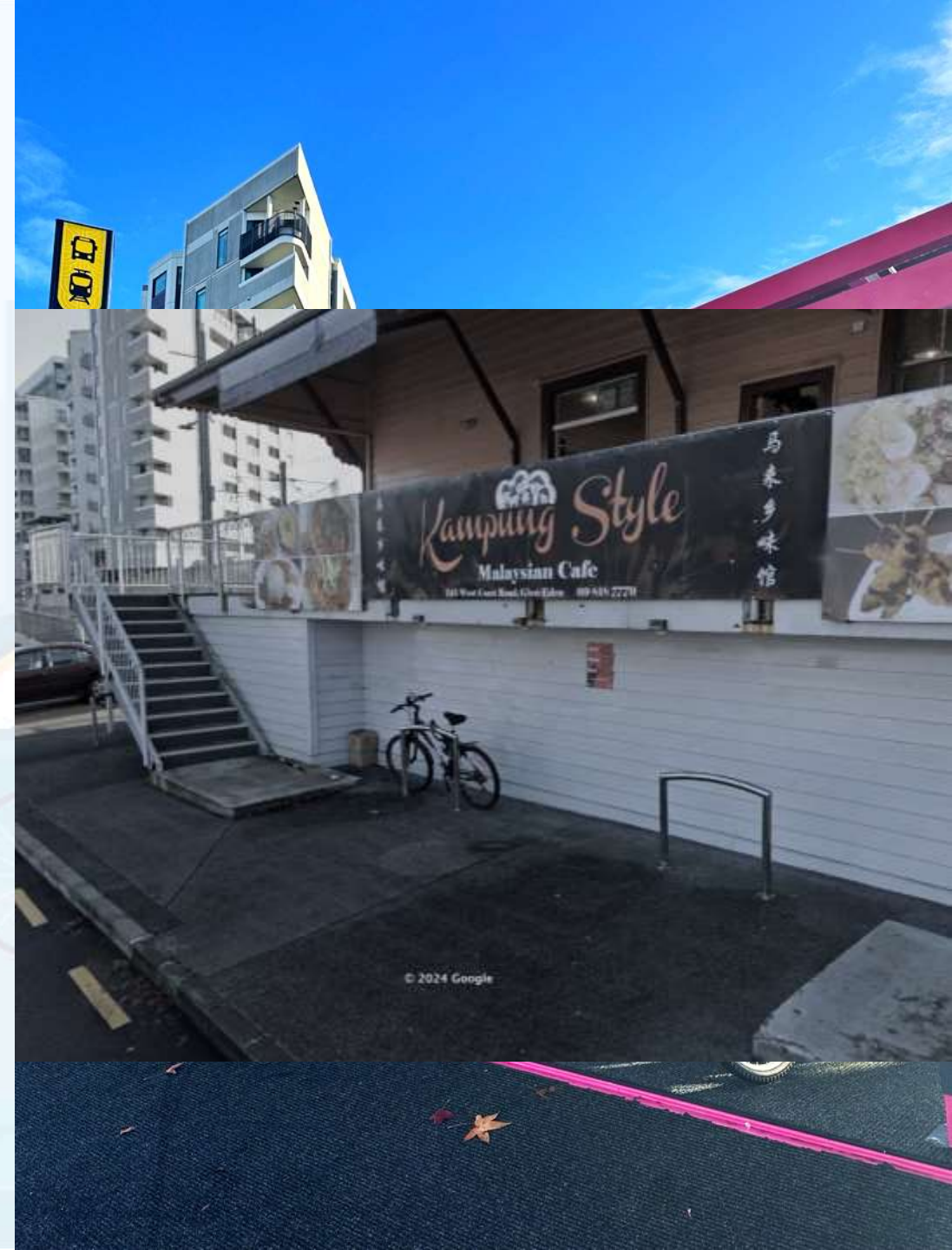


LOCKY DOCK

- Reduce car trips to transit
- Promote low-emission travel modes
- Enhance public transport access
- Provide shared micromobility options
- Increase neighbourhood connectivity



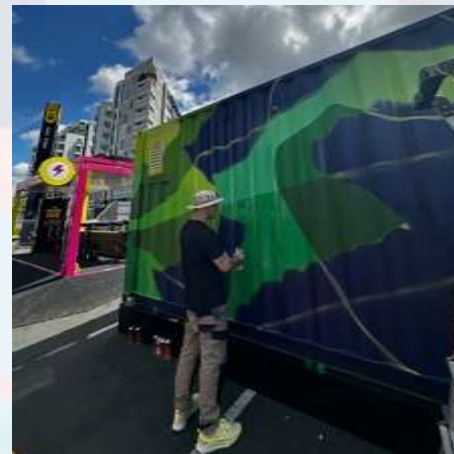
- Enhancing access in underserved communities
- Reallocating of car parks to footpaths
- Art workshops and community events
- Diversified transport choices
- Public <-> Private data sharing
- Data-driven policy making





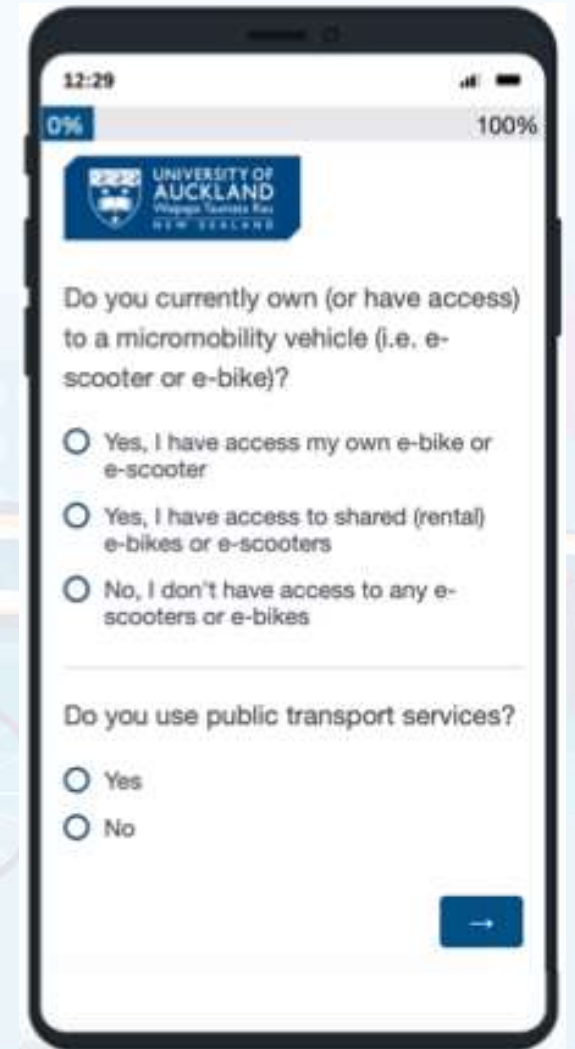


Infrastructure



Data Collection

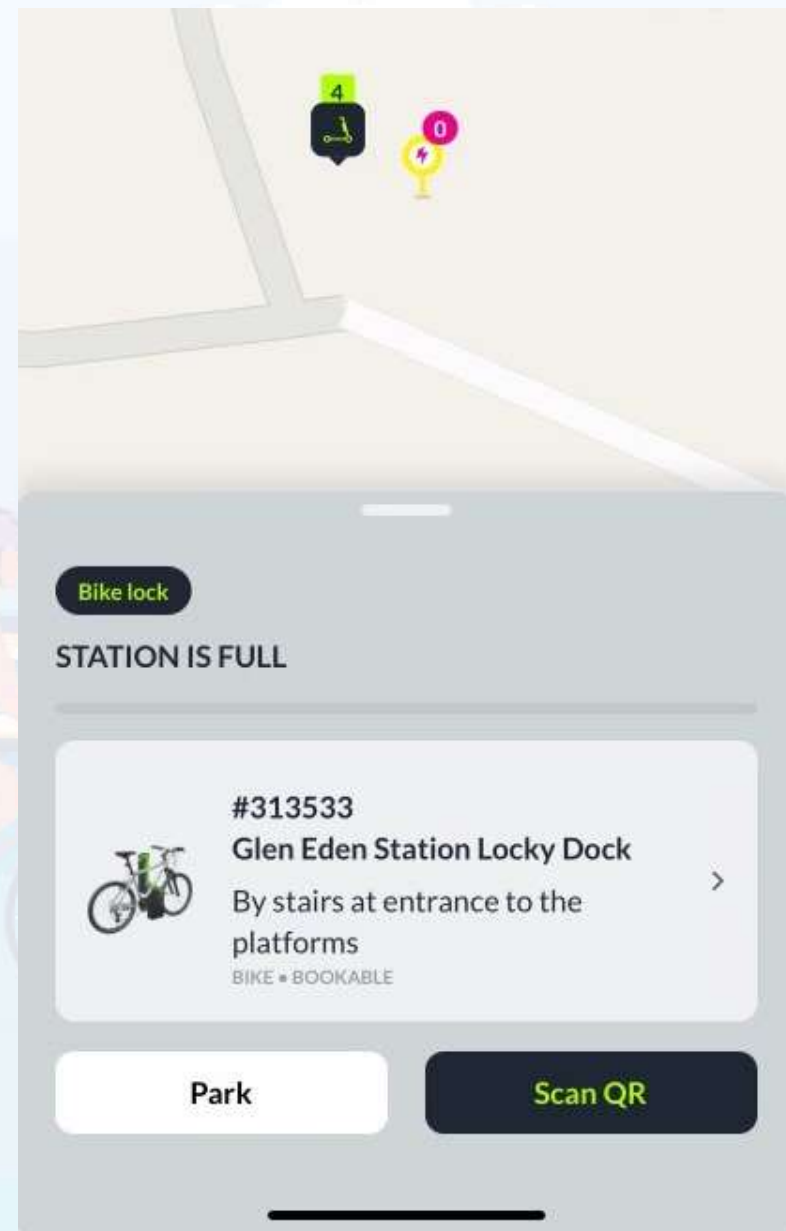
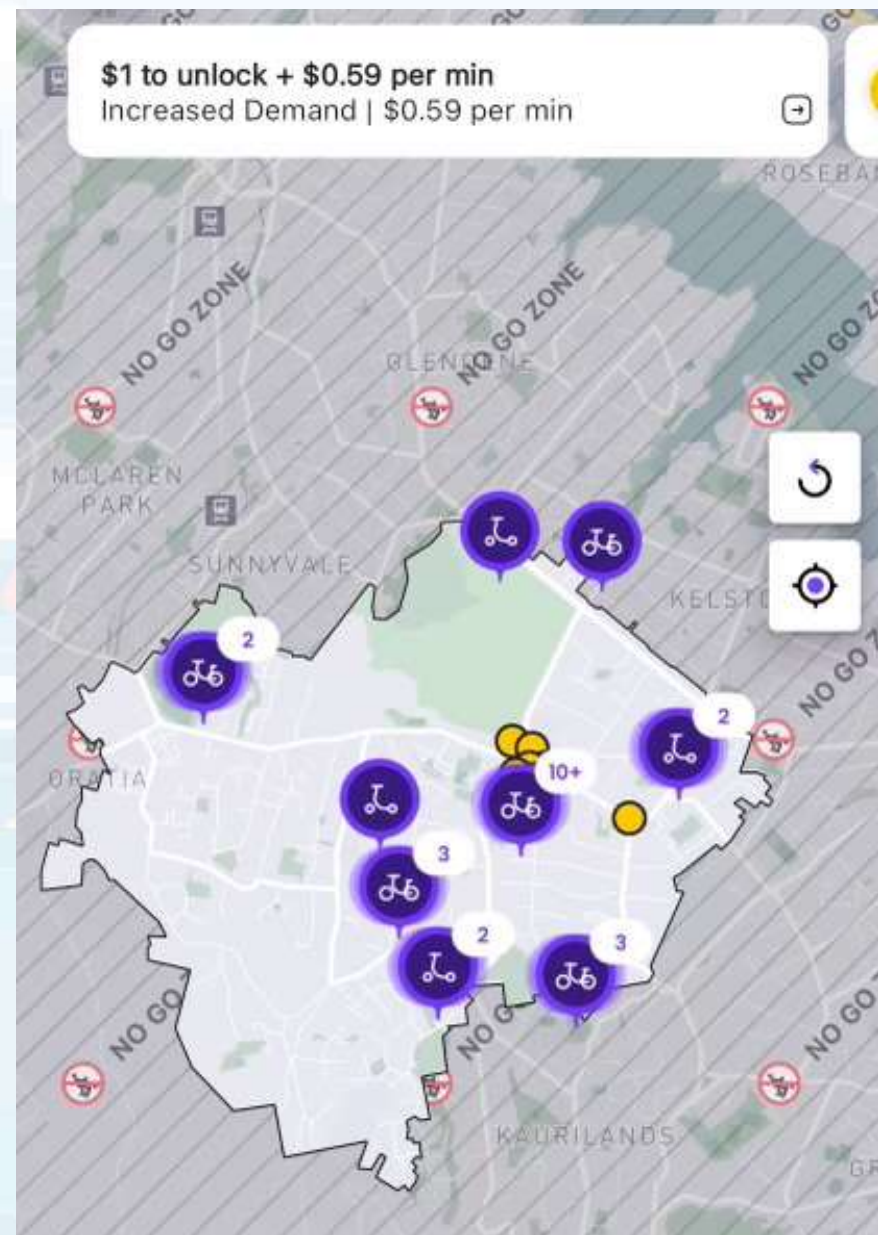
Pre/post-pilot survey



Community Engagement

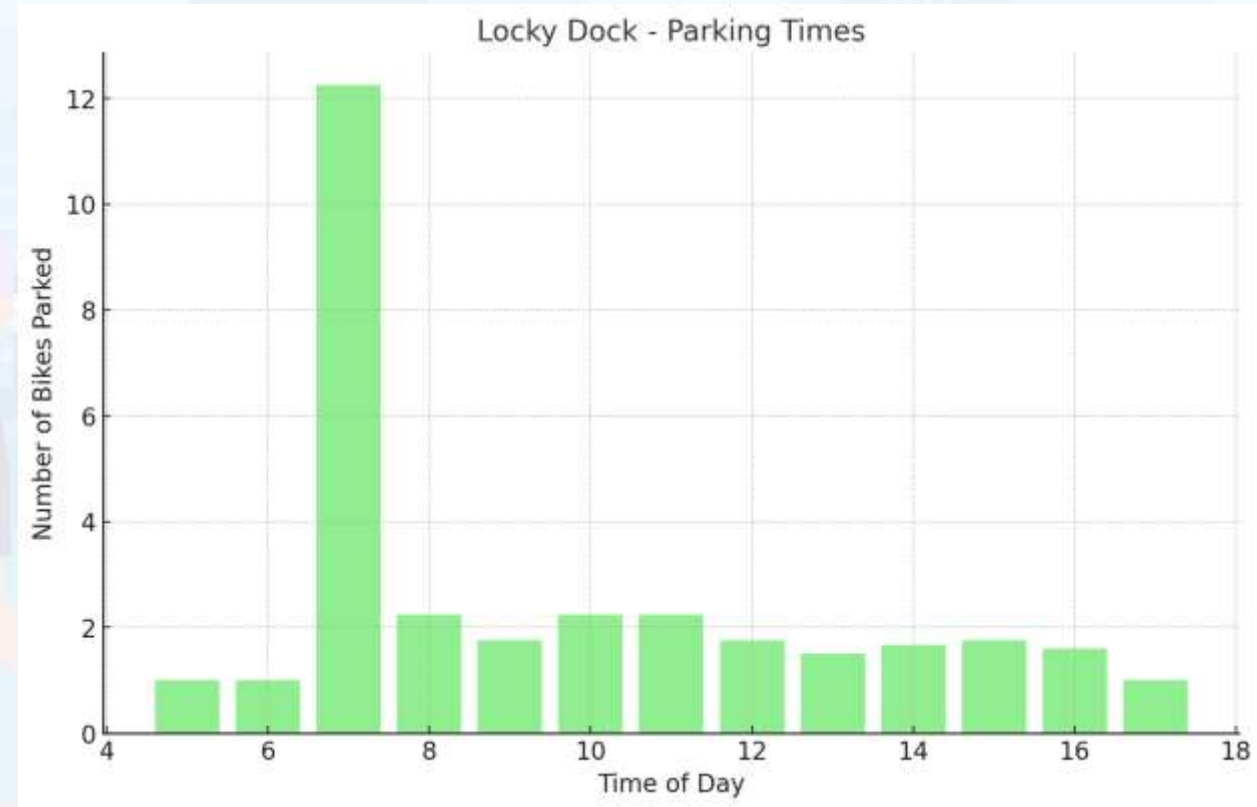
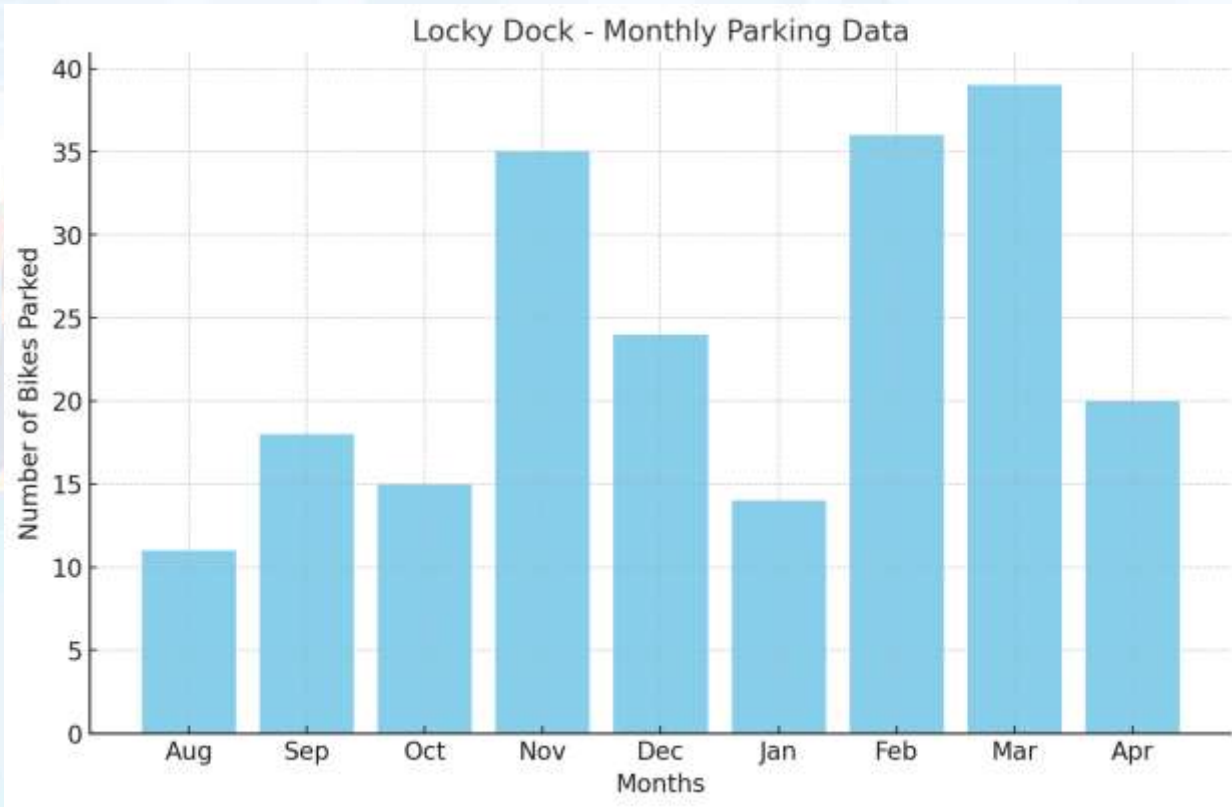




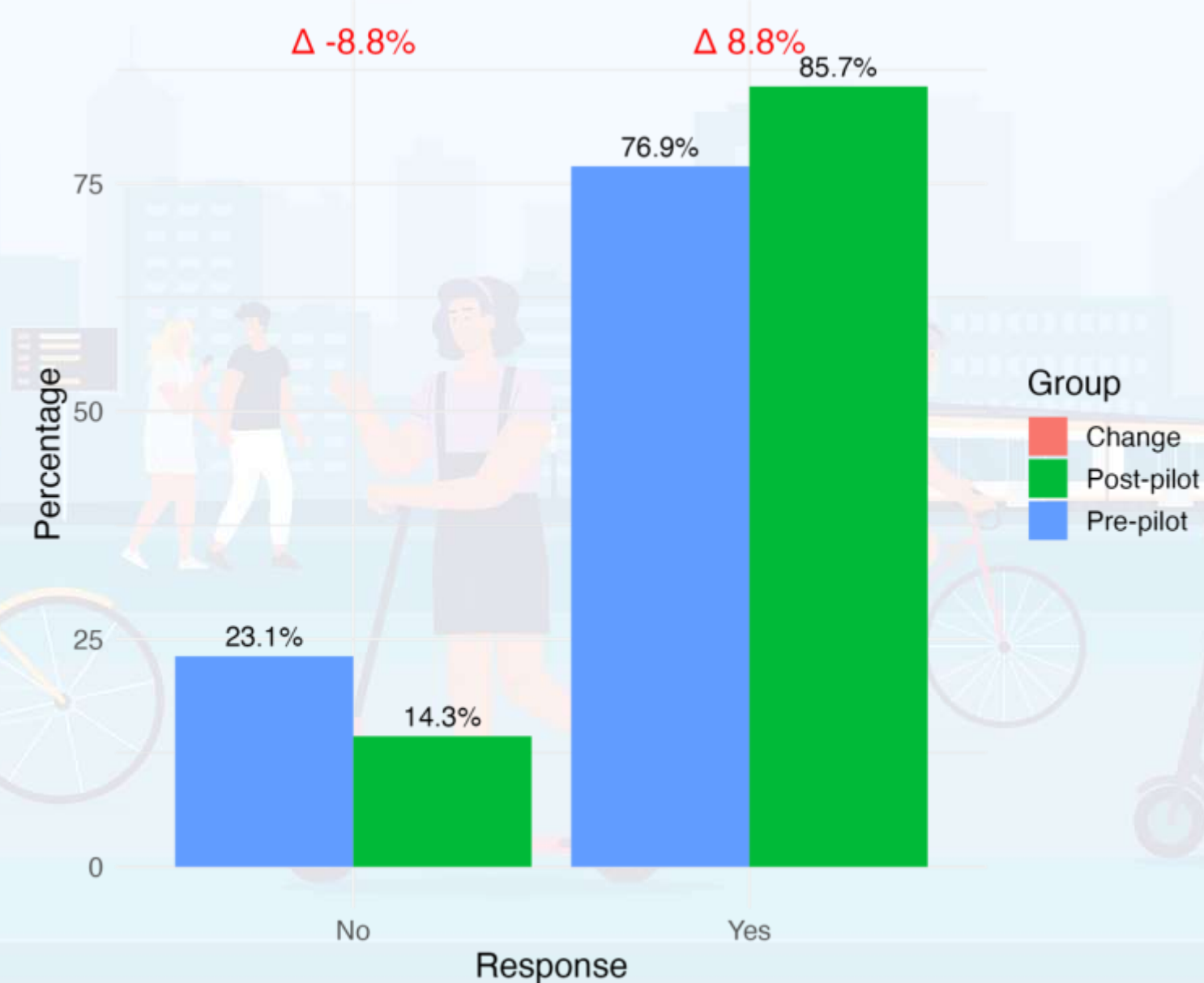


Utilisation

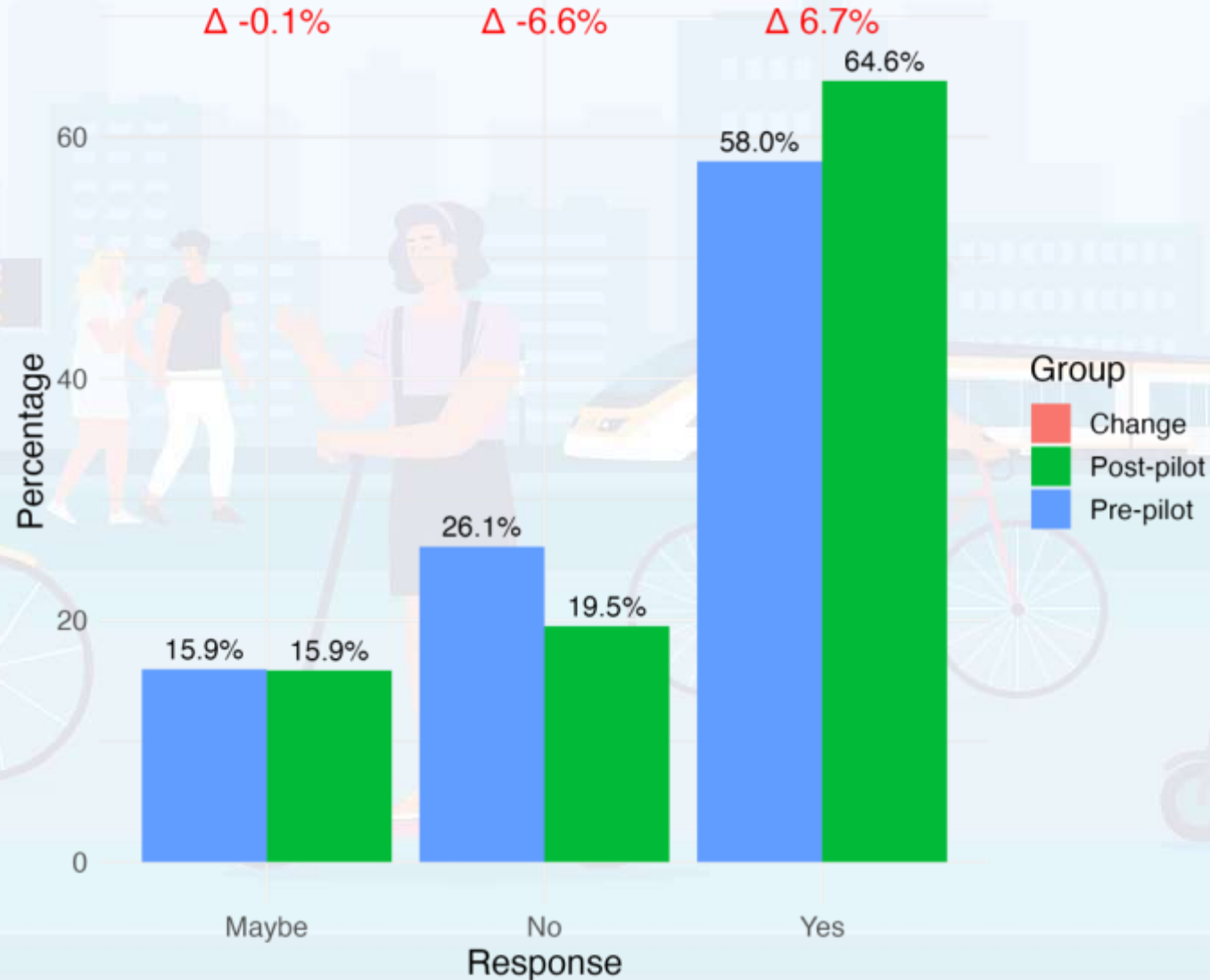
- Mostly commuters with 7 am being a key parking start time and an average duration of 7.57 hours
- Scooter dock under-utilised but did see a spike in November.



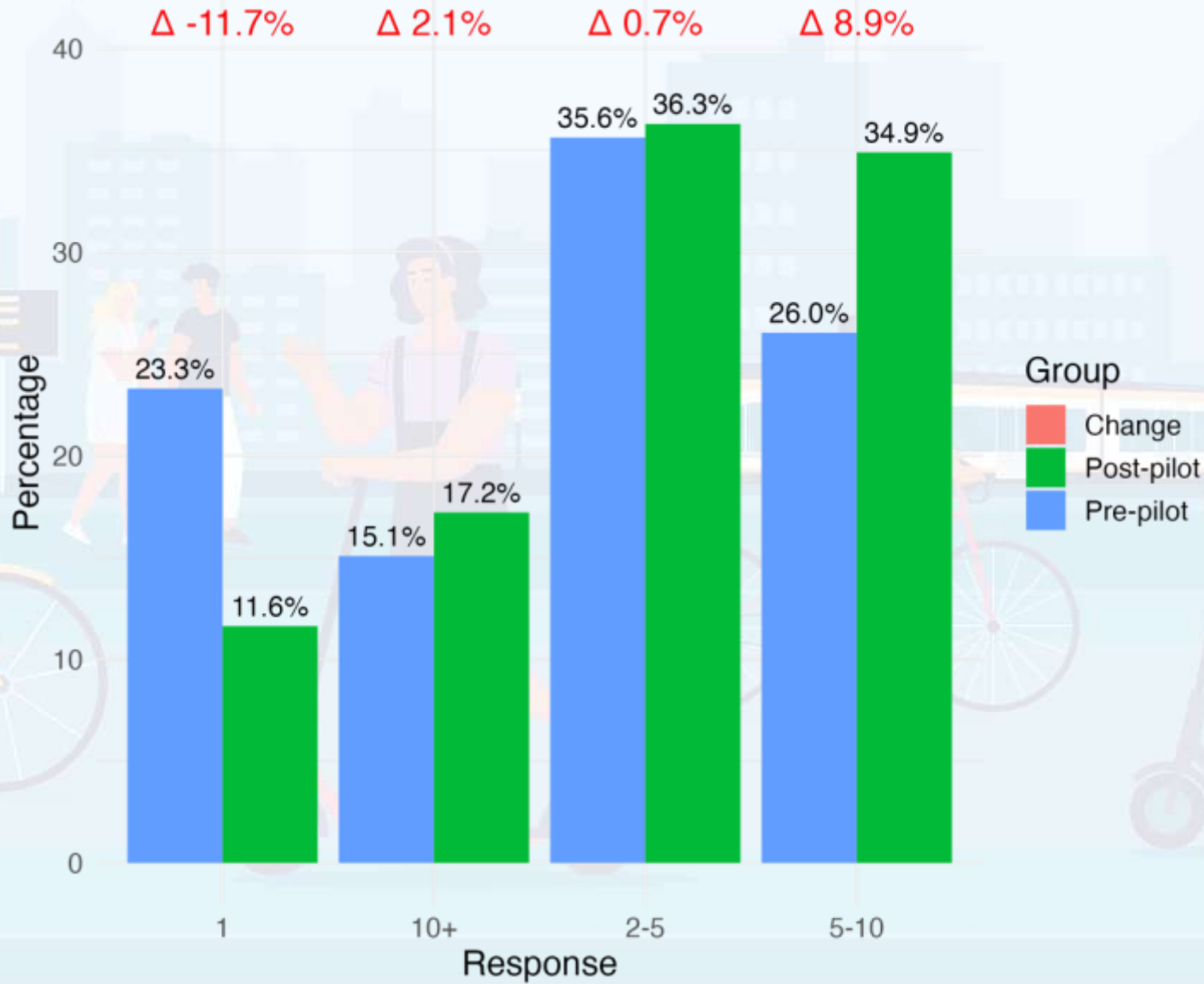
Would you be willing to use an e-bike or e-scooter?



Would you use a shared e-bike/e-scooter to access public transport?



How many trips per week do you take on public transport?





191 Bikes & Scooters Docked

From Aug 2023 to Apr 2024



382 Car Trips Reduced

Travelling to/from
Glen Eden Train Station



687kg of CO₂

Emissions Avoided¹²

Equivalent carbon sequestration
of 32 mature trees over 12 months³

1. 0.264kg CO₂ emitted per vehicle kilometre (Ministry of Environment 2020)
2. Auckland average car trip of 10km (NZ Household Travel Survey 2018-2021)
3. Excerpt: <https://www.eea.europa.eu/articles/forests-health-and-climate-change/key-facts/trees-help-tackle-climate-change>